



Contact
E-mail
Phone

Customer

Contact
E-mail
Phone

Technical data

FA 15.77T With motor T 30-6/48K

Project ID Untitled project 2025-03-05 07:27:14.016
Project name
Installation location
Customer pos. No.

Date 2025-03-05

Pump

Pump type	FA 15.77T
Installation type	Suspension device 2 DN150S/2RK
Free passage	80 mm
Nominal speed	1,140 1/min
Rated frequency	60 Hz
Impeller type	Solid
Impeller construction	Closed

Impeller size

max. possible	410 mm
min. possible	310 mm
standard	410 mm
designed	410 mm

Suction port

Rated diameter	DN200
Pressure rating	PN10
Standard	EN1092-2-S

Discharge port

Rated diameter	DN150
Pressure rating	PN10
Standard	EN1092-2-D

Weights

Weight	max. 186 kg
Weight of motor	531 kg
Weight of unit	max. 717 kg

Materials

Pump housing	EN-GJS-500-7
Stationary wear ring	1.4308
Impeller	EN-GJS-500-7
Mobile wear ring	1.4462/1.4470

Motor

Motor name	T 30-6/48K
Number of poles	6
Rated power	56 kW
Rated speed	1140 1/min
Power input with rated power	62.9 kW
Rated voltage	380 ~3 V
Current input with rated power	116.6 A
Efficiency with rated power	89 %
cos phi with rated power	0.82
cos phi with starting	0
Rated frequency	60 Hz
Operation type wet	S1
Operation type dry	-
Starting current, direct starting	770 A
Starting current, star-delta	256.7 A
Starting torque	800 Nm
Inertia moment	0.604 kg m ²
Degree of protection	IP 68
Sel. explosion protection	
Ex-designation	
Ex-number	
Motor connection cable	2X 4x10 + 2x1,5 NSSHÖU
Max. fluid temperature	40 °C
Starts per hour max.	15

Duty point data

Volume flow	
Head	
Shaft power P ₂	
Hydr. efficiency η _{hyd.}	
Power input P ₁	
Fluid	Water
Required pump NPSH	
Rotational speed	1,146 1/min
Total efficiency	$= \frac{P_2 * \text{Hydr. efficiency } \eta_{\text{hyd.}}}{P_1}$



Contact
E-mail
Phone

Customer

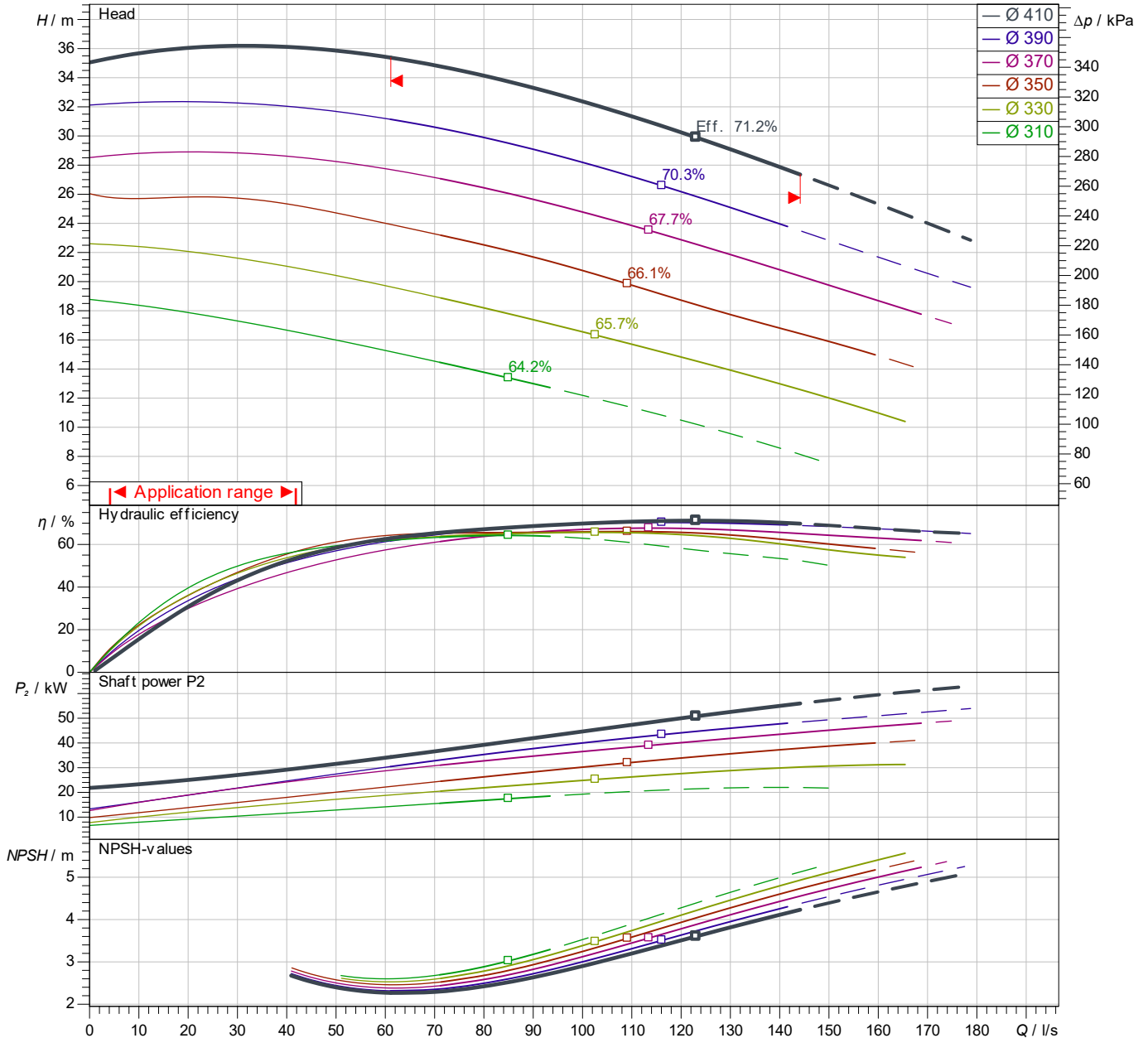
Contact
E-mail
Phone

Performance curves

FA 15.77T
With motor
T 30-6/48K

Project ID: Untitled project 2025-03-05 07:27:14.016
Project name
Installation location
Customer pos. No.

Date 2025-03-05



Power data referred to: Water; 20°C; 998.3kg/m³; 1.005mm²/s
Tolerance as per ISO 9906 / Annex A.2

Pump

Impeller Ø designed 410 mm
Nominal speed 1,140 1/min
Frequency 60 Hz
Impeller type Solid

Motor

Rated power 56 kW
Sel. explosion protection

Duty point data

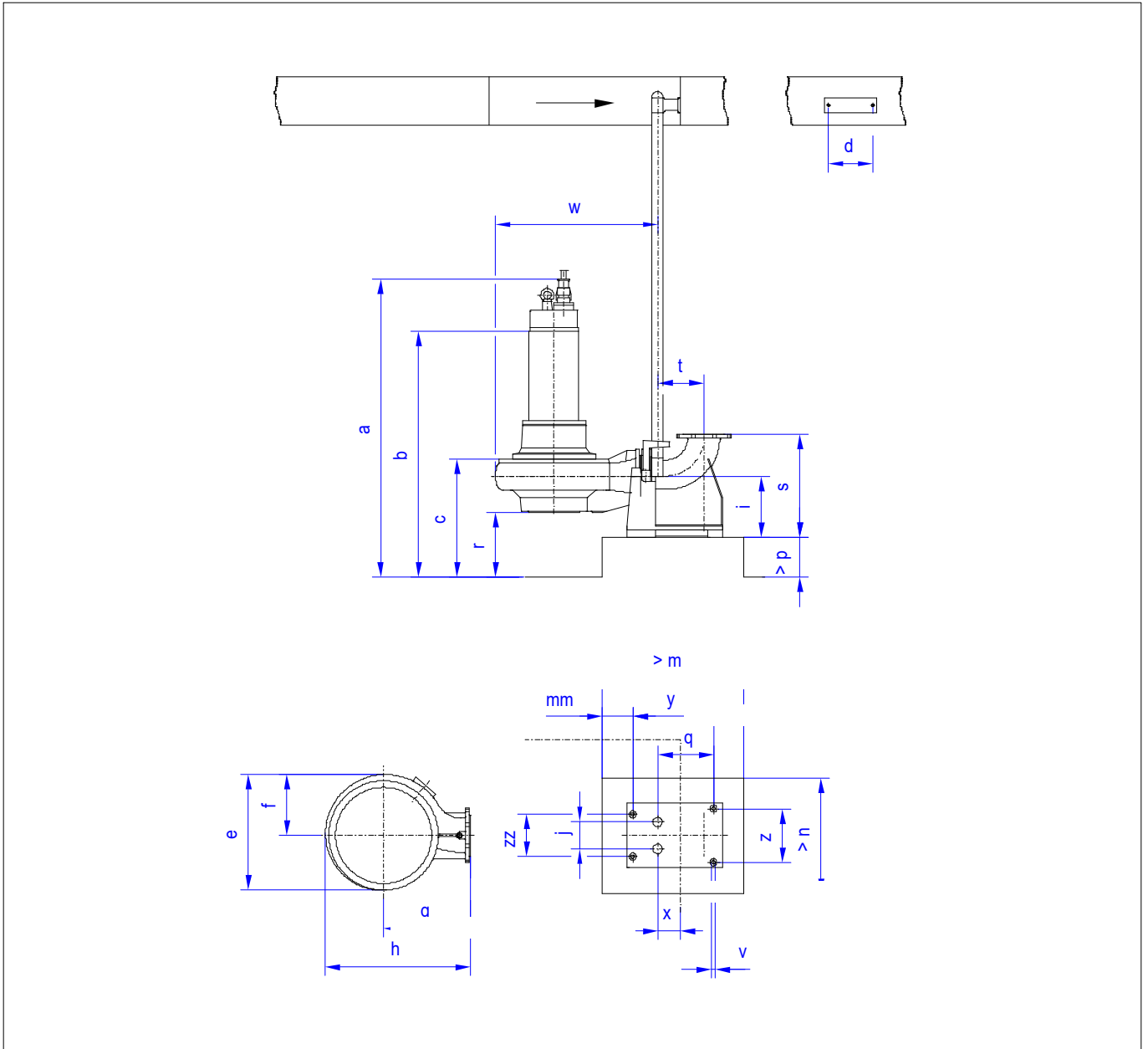
Volume flow
Head
Shaft power P₂
Hydr. efficiency η_{hyd}.
Power input P₁
Required pump NPSH
Rotational speed 1146 1/min

Dimensions

FA 15.77T
With motor
T 30-6/48K

Project ID Untitled project 2025-03-05 07:27:14.016
Project name
Installation location
Customer pos. No.

Date 2025-03-05



Dimensions

Name	Value	Name	Value
a	1,771 mm	k	139 mm
b = min. water level	1,517 mm	m	740 mm
c	490 mm	mm	160 mm
d	230 mm	n	600 mm
e	603 mm	p	70 mm
f	318 mm	q	291 mm
g	450 mm	r	200 mm
h	753 mm	s	540 mm
i	320 mm	t	241 mm
j	140 mm	v	18 mm

Connections

Suction port	DN200 PN10
Discharge port	DN150 PN10
Suspension device 2	DN150S/2RK