

Contact  
E-mail  
Phone

**Customer**

Contact  
E-mail  
Phone

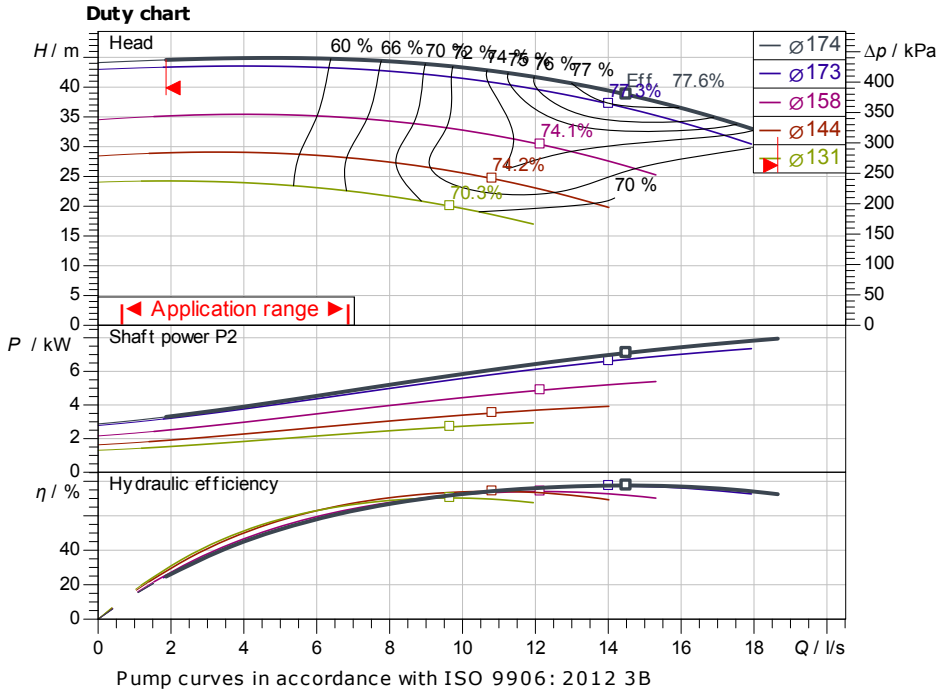
## Technical data

Glanded standard pump  
Atmos GIGA-N 40/160-2-B

Project ID: Untitled project 2025-03-01 20:23:09.313

Project name  
Installation location  
Customer pos. No.

Date: 2025-03-01



**Requested data**

Flow  
Head  
Media: Water 100 %  
Fluid temperature: 20.00 °C  
Density: 998.30 kg/m<sup>3</sup>  
Kin. viscosity: 1.00 mm<sup>2</sup>/s

**Hydraulic data (Duty point)**

Flow  
Head  
Shaft power P2  
Hydraulic efficiency  
NPSH  
Impeller size: 174

**Product data**

Glanded standard pump  
Atmos GIGA-N 40/160-2-B  
Max. operating pressure: 1,600 kPa  
Fluid temperature: -20 °C ... +140 °C  
Max. ambient temperature: 40 °C  
Minimum efficiency index (MEI)

**Motordata per Motor/Pump**

Motor efficiency level  
Mains connection: V / Hz  
Permitted voltage tolerance  
Max. speed  
Rated power P2  
Rated current  
Power factor  
Efficiency: 50% / 75% / 100% // %  
Degree of protection  
Insulation class  
Motor protection

**Fitting dimensions**

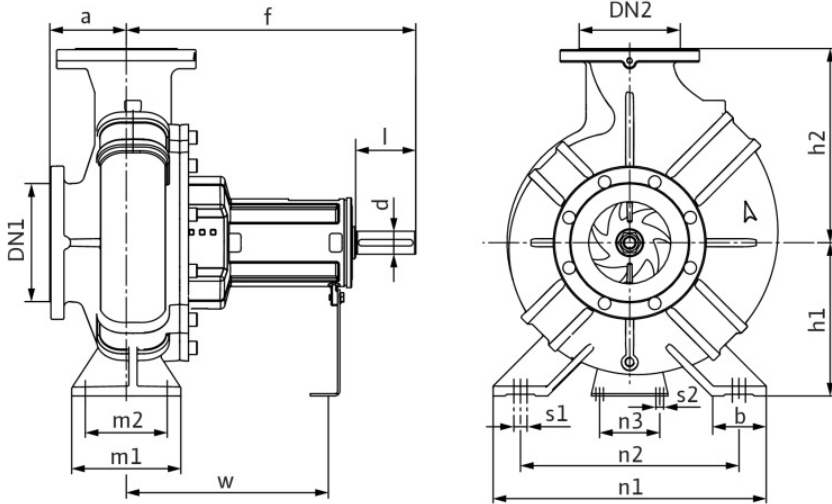
Pipe connection on the suction side: DN 65, PN 16  
Pipe connection (pressure side): DN 40, PN 16  
Port to Port

**Materials**

Pump housing: 5.1301, EN-GJL-250 c  
Impeller: EN-GJL-200  
Lantern: 5.1301/EN-GJL-250  
Shaft: 1.4021  
Shaft seal: AQ1EGG

**Information for order placements**

Weight approx.  
Item number: 6090547



**Dimensions**

mm

a	80	DN2	DN 40, P	h2	160	n2	190
b	50	f	360	l	50	n3	110
d	24	h1	132	m1	100	Ø k	145
dL	19	h1	132	m2	70	Ø d	118
DN1	DN 65, P	h2	160	n1	240	Ø D	185



Contact  
E-mail  
Phone

**Customer**

Contact  
E-mail  
Phone

## Hydraulic data

Glanded standard pump  
Atmos GIGA-N 40/160-2-B

Project ID: Untitled project 2025-03-01 20:23:09.313

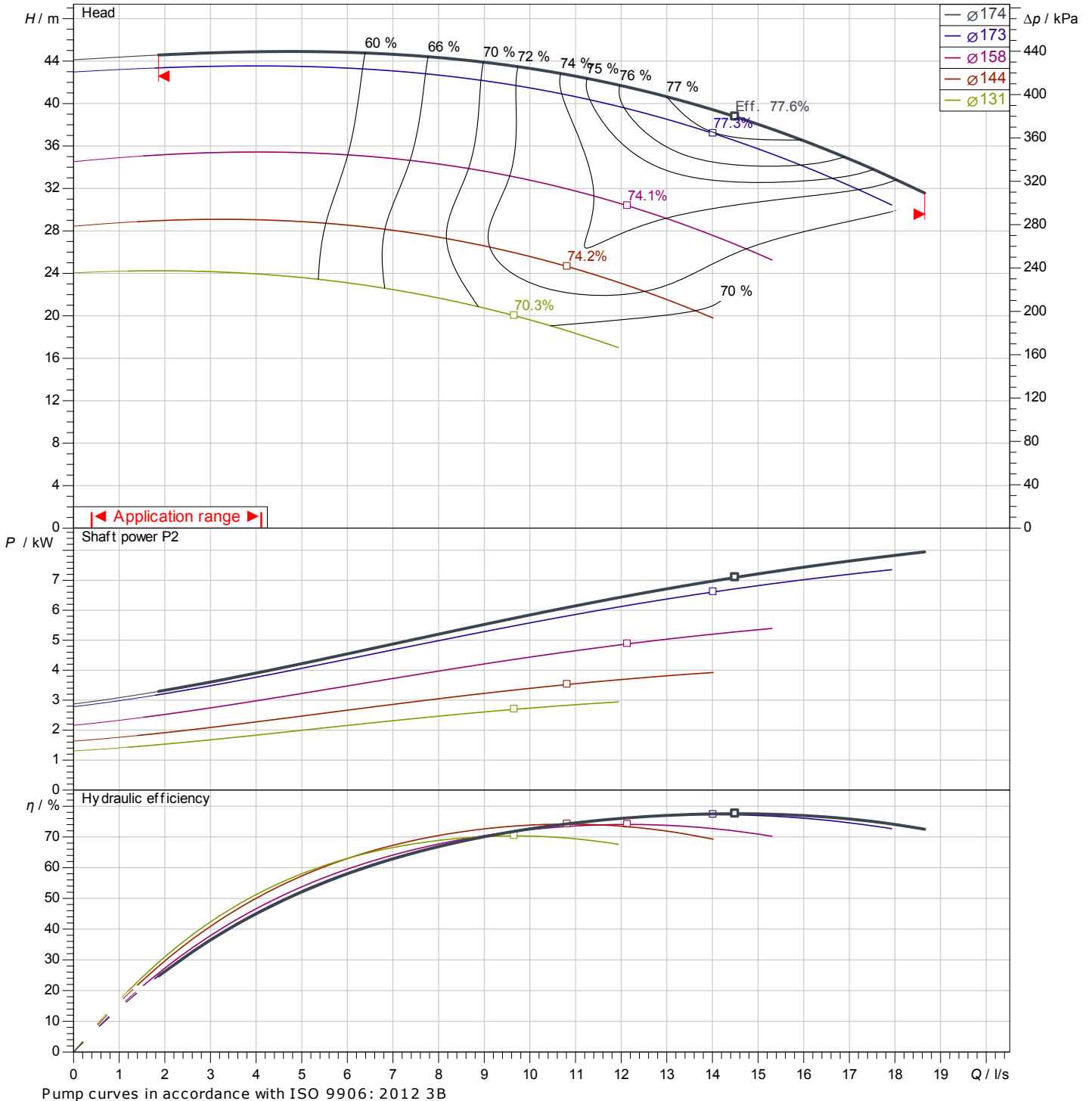
Project name  
Installation location  
Customer pos. No.

Date: 2025-03-01

## Operating data

Rotational speed <b>2955 1/min</b>	Frequency <b>Hz</b>	Duty point <b>Q =</b>	<b>H =</b>	Suction port <b>DN 65</b>	Discharge port <b>DN 40</b>
---------------------------------------	------------------------	--------------------------	------------	------------------------------	--------------------------------

Power data referred to: Water; 20°C; 998.3kg/m<sup>3</sup>; 1.005mm<sup>2</sup>/s ±10 % tolerance with linear U/f frequency control



Pump curves in accordance with ISO 9906: 2012 3B

Contact  
E-mail  
Phone

**Customer**

Contact  
E-mail  
Phone

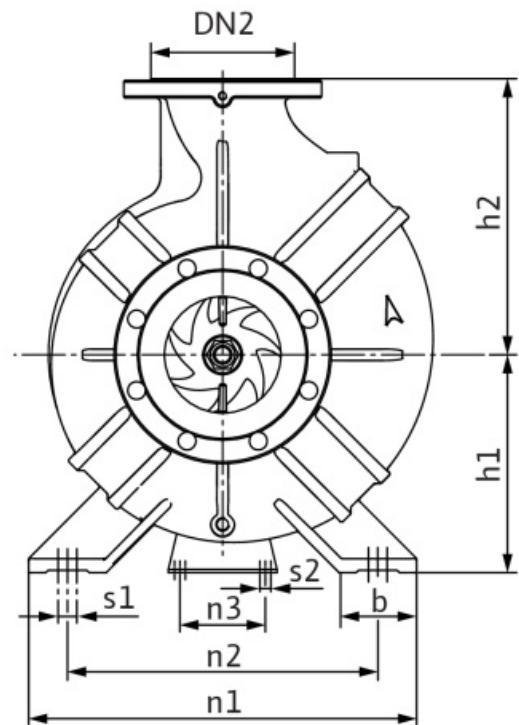
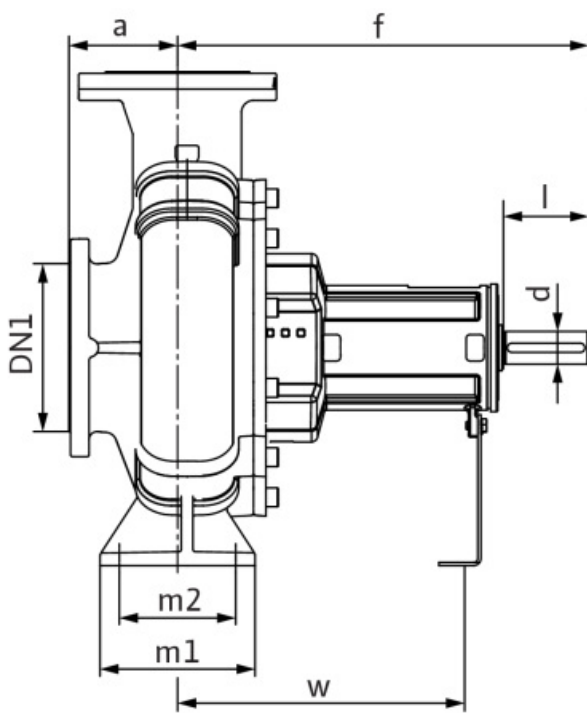
## Dimensions

Glanded standard pump  
Atmos GIGA-N 40/160-2-B

Project ID                      Untitled project 2025-03-01 20:23:09.313

Project name  
Installation location  
Customer pos. No.

Date                      2025-03-01



**Bareshaft**

Suction side                      DN 65, PN 16  
Discharge side                      DN 40, PN 16

**Dimensions**                      mm

Name	Value	Name	Value	Name	Value	Name	Value
a	80	h1	132	n1	240	s2	12
b	50	h1	132	n2	190	w	260
d	24	h2	160	n3	110	x	100
dL	19	h2	160	Ø k	145		
DN1	DN 65, PN 16	l	50	Ø d	118		
DN2	DN 40, PN 16	m1	100	Ø D	185		
f	360	m2	70	s1	12		