

Customer

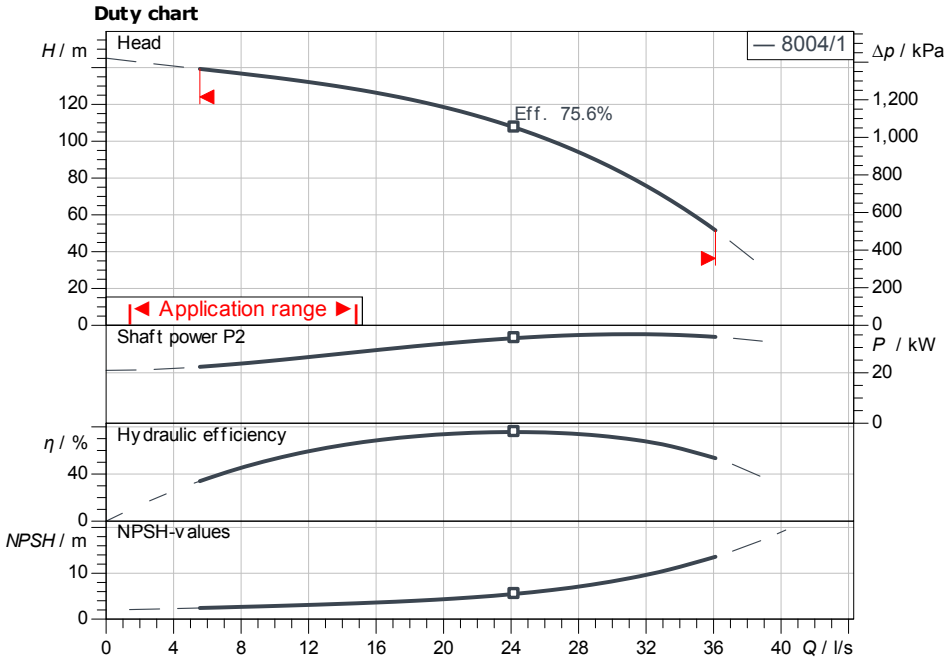
Technical data

High-pressure multistage centrifugal pump MVI 7004/1-3/25/E/3-460-60-2

Project ID Untitled project 2025-03-05 08:57:18.785

Project name
Installation location
Customer pos. No.

Date 2025-03-05

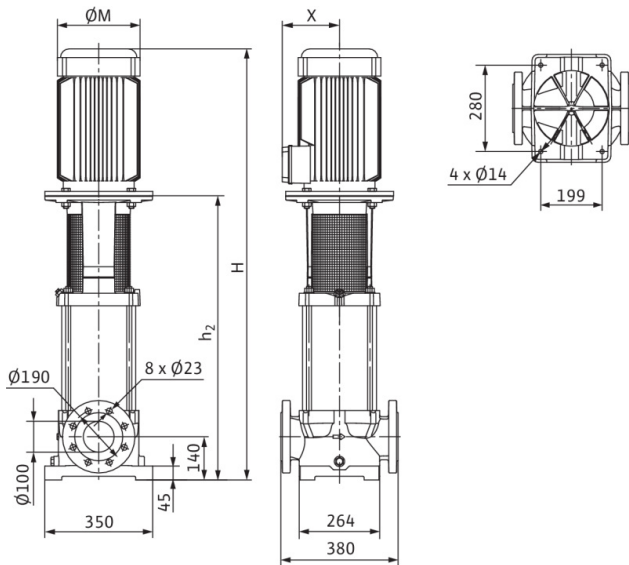


ISO 9906: 2012 3B

Dimensions

H	1,52
H2	927
ØM	347
X	255

mm



Requested data

Flow	
Head	
Media	Water 100 %
Fluid temperature	20.00 °C
Density	998.30 kg/m³
Kin. viscosity	1.00 mm²/s

Hydraulic data (Duty point)

Flow	
Head	
Shaft power P2	
Hydraulic efficiency	
NPSH	

Product data

High-pressure multistage centrifugal pump MVI 7004/1-3/25/E/3-460-60-2	
Max. operating pressure	2,500 kPa
Inlet pressure max.	10 bar
Fluid temperature	-15 °C ... +120 °C
Max. ambient temperature	50 °C
Minimum efficiency index (MEI)	

Motordata per Motor/Pump

Motor efficiency level	IE3
Mains connection	3~ 460 V / 60 Hz
Permitted voltage tolerance	+6 %
Max. speed	3,575 1/min
Rated power P2	37.00 kW
Rated current	61.90 A
Power factor	0.9
Service factor	1.15
Efficiency	
50% / 75% / 100%	//%
Degree of protection	IP55
Insulation class	F
Motor protection	No

Fitting dimensions

Pipe connection on the suction side	DN 100, PN 25
Pipe connection (pressure side)	DN 100, PN 25

Materials

Pump housing	5.1301/EN-GJL-250
Impeller	1.4408
Shaft	1.4057
Shaft seal	U3BE3GG
Gasket material	EPDM

Information for order placements

Weight approx.	298 kg
Item number	4082063