



Contact  
E-mail  
Phone

Customer

Contact  
E-mail  
Phone

## Technical data

### Rexa PRO S03 A-11

With motor

### P 13.M-09/EAD3X2-T

Project ID                      Untitled project 2025-03-17 06:08:24.644

Project name

Installation location

Customer pos. No.

Date    2025-03-17

#### Pump

Pump type	Rexa PRO S03 A-11
Installation type	Suspension device DN40/2RK
Free passage	10 mm
Nominal speed	2900
Frequency	50 Hz
Impeller type	Dual vane impeller
Impeller construction	Closed

#### Impeller Ø

designed	140 mm
standard	mm
Max.	140 mm
Min.	140 mm

#### Discharge port

Pressure rating	PN10
Rated diameter	DN32, DN36, DN40 cutoff
Standard	WILO-D

#### Suction port

Pressure rating	
Rated diameter	
Standard	-

#### Weights

Weight	max.	9.5 kg
Weight of motor		31 kg
Weight of unit	max.	40.5 kg

#### Materials

Pump housing	EN-GJL-250
Impeller	EN-GJL-250
Motor housing	EN-GJL-250

#### Motor

Motor name	P 13.M-09/EAD3X2-T
Number of poles	2
Rated power	1.1 kW
Rated speed	2921 1/min
Power input with rated power	1.3 kW
Rated voltage	400 ~3 V
Current input with rated power	2.5 A
Efficiency with rated power	82.3 %
cos phi with rated power	0.77
cos phi with starting	
Rated frequency	50 Hz
Operation type wet	S1
Operation type dry	S2-30 min, S3-25%
Starting current, direct starting	22 A
Starting current, star-delta	7.3 A
Starting torque	15 Nm
Inertia moment	0.0014 kg m <sup>2</sup>
Degree of protection	IP 68
Sel. explosion protection	ATEX
Ex-designation	
Ex-number	
Motor connection cable	7G1,5 H07RN-F
Max. fluid temperature	40 °C
Starts per hour max.	60

#### Duty point data

Volume flow	
Head	
Shaft power P2	
Hydr. efficiency η hyd.	
Power input P1	
Fluid	Water
Required pump NPSH	
Rotational speed	2,930 1/min
Max. flow	5.2 l/s
Head H(Q max)	2 m
Shut off head	28.2 m
Best efficiency point Q (BEP)	2.7 l/s
Best efficiency point H (BEP)	18.5 m

$$\text{Total efficiency} = \frac{P_2 * \text{Hydr. efficiency } \eta \text{ hyd.}}{P}$$

ArtNr



Contact  
E-mail  
Phone

Customer

Contact  
E-mail  
Phone

## Technical data

**Rexa PRO S03 A-11**

With motor

**P 13.M-09/EAD3X2-T**

Project ID                      Untitled project 2025-03-17 06:08:24.644

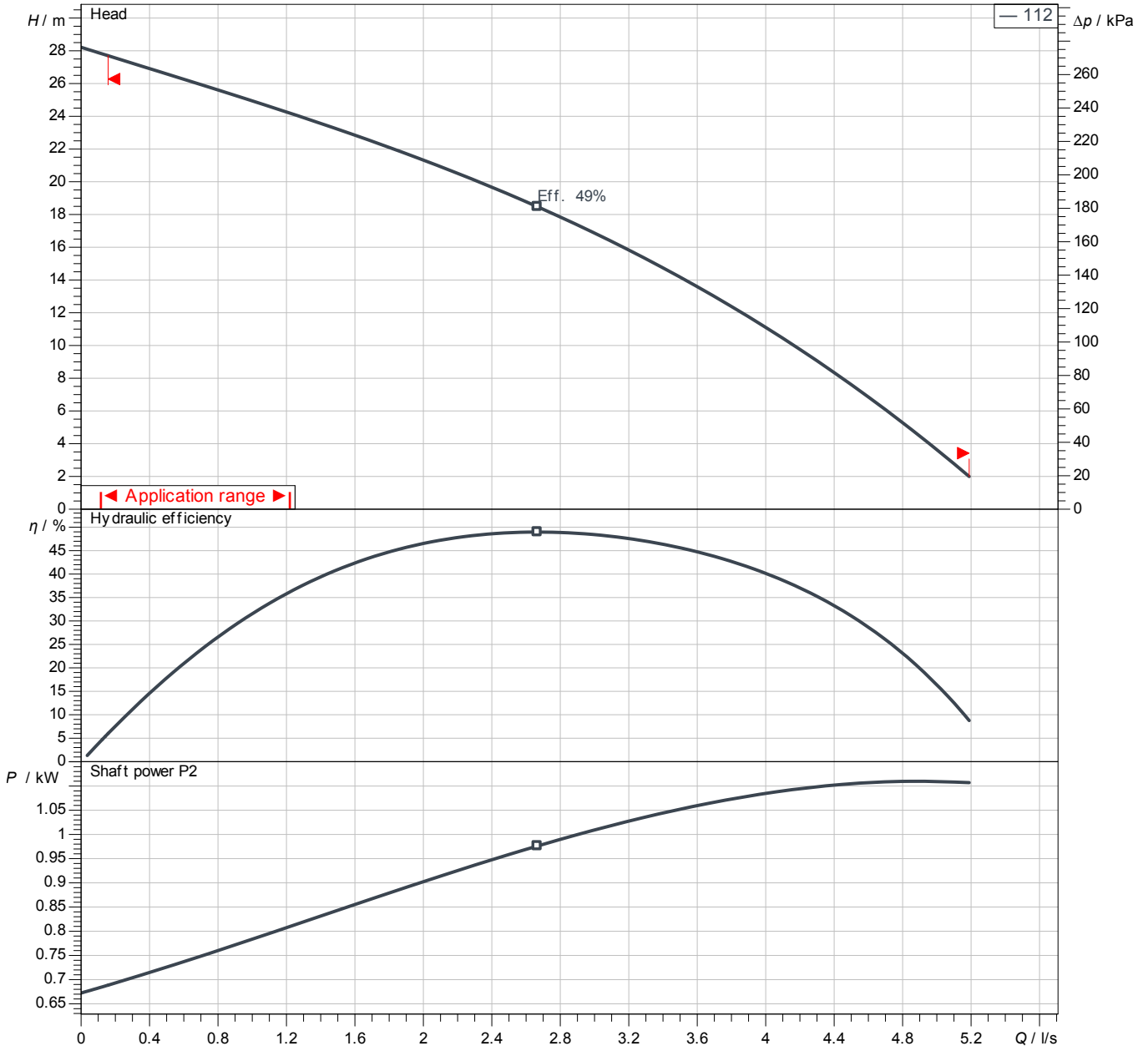
Project name

Installation location

Date    2025-03-17

### **Tender text**

Submersible Sewage Pump as submersible, single-stage block unit in stationary, vertical installation to pump untreated sewage which doesn't attack the pump neither chemically nor mechanically. Pump with radially arranged discharge piece and axial pump intake. Service-friendly design by separated motor and pump casing. Pumping values to be guaranteed as per ISO 9906 Annex A



Power data referred to: Water; 20°C; 998.3kg/m<sup>3</sup>; 1.005mm<sup>2</sup>/s  
Tolerance as per ISO 9906 / Annex A.2

**Pump**

Impeller Ø	designed	140 mm
Nominal speed		2,921 1/min
Frequency		50 Hz
Impeller type		Dual vane impeller

**Motor**

Rated power	1.1 kW
Sel. explosion protection	ATEX

**Duty point data**

Volume flow	
Head	
Shaft power P2	
Hydr. efficiency η hyd.	
Power input P1	
Required pump NPSH	
Rotational speed	2930 1/min

## Dimensions

### Rexa PRO S03 A-11

With motor

### P 13.M-09/EAD3X2-T

Project ID

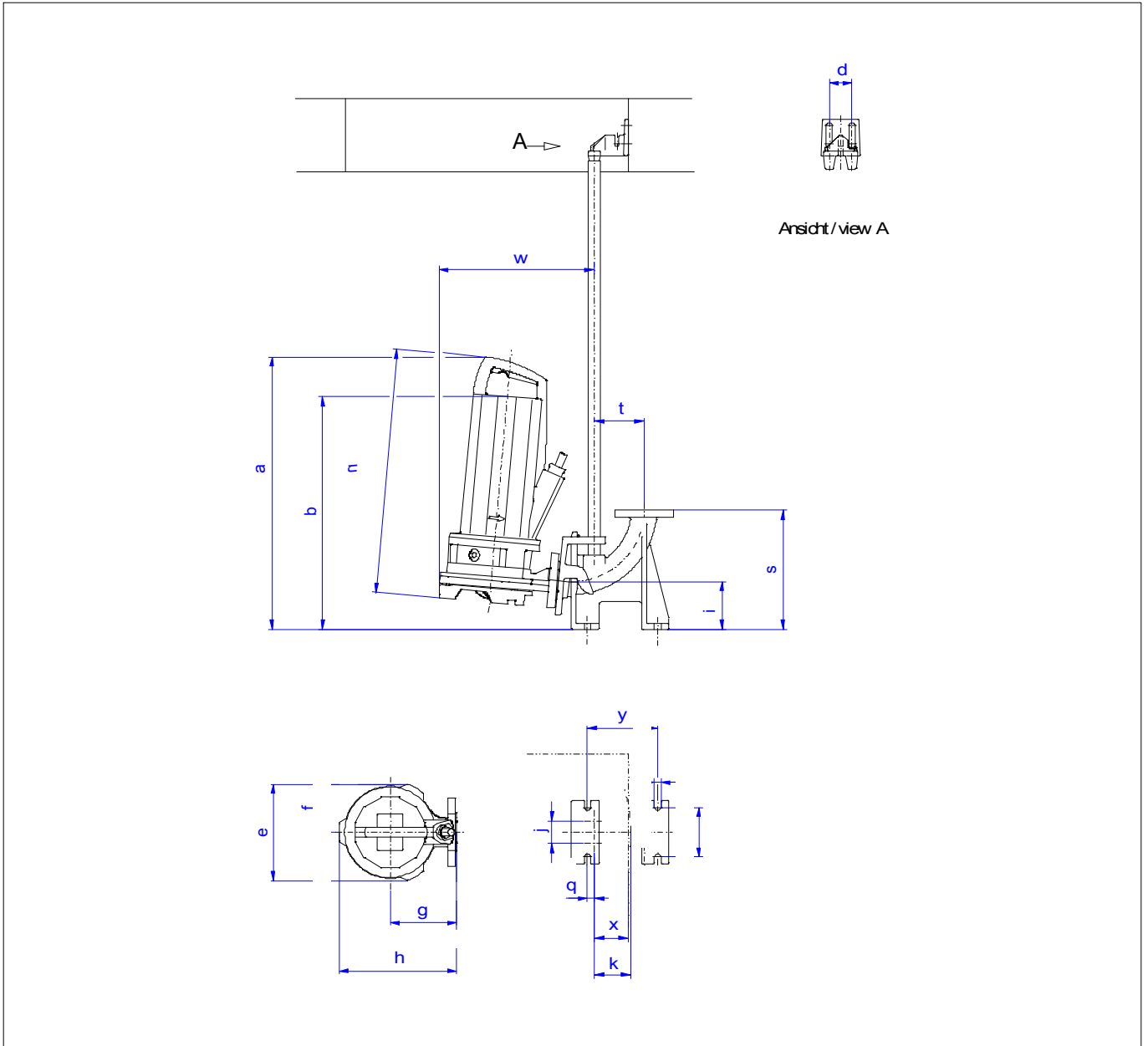
Untitled project 2025-03-17 06:08:24.644

Project name

Installation location

Customer pos. No.

Date 2025-03-17



#### Dimensions

Name	Value	Name	Value
a	529 mm	q	15 mm
b = min. water lev	442 mm	s	262 mm
d	50 mm	t	110 mm
e	203 mm	u	460 mm
f	103 mm	v	14 mm
g	163 mm	w	422 mm
h	268 mm	x	75 mm
i	105 mm	y	155 mm
j	50 mm	z	110 mm
k	78 mm		

#### Connections

Suction port	
Discharge port	DN32, DN36, DN40 cutoff PN10
Suspension device	DN40/2RK