

Customer

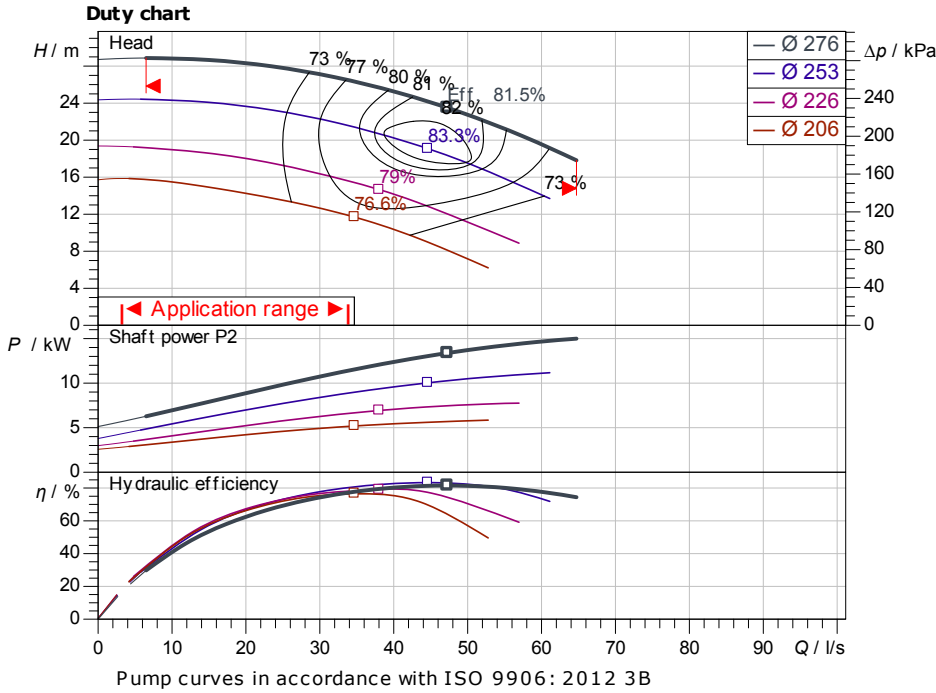
Technical data

Glanded standard pump Atmos GIGA-N 100/250.1-B-IE4

Project ID Untitled project 2025-03-01 20:23:09.313

Project name
Installation location
Customer pos. No.

Date 2025-03-01



Requested data

Flow
Head
Media Water 100 %
Fluid temperature 20.00 °C
Density 998.30 kg/m³
Kin. viscosity 1.00 mm²/s

Hydraulic data (Duty point)

Flow
Head
Shaft power P_2
Hydraulic efficiency
NPSH
Impeller size 276

Product data

Glanded standard pump
Atmos GIGA-N 100/250.1-B-IE4
Max. operating pressure 1,600 kPa
Fluid temperature -20 °C ... +140 °C
Max. ambient temperature 40 °C
Minimum efficiency index (MEI)

Motordata per Motor/Pump

Motor efficiency level
Mains connection V / Hz
Permitted voltage tolerance
Max. speed
Rated power P_2
Rated current
Power factor
Efficiency
50% / 75% / 100% //%

Fitting dimensions

Pipe connection on the suction side DN 125, PN 16
Pipe connection (pressure side) DN 100, PN 16
Port to Port

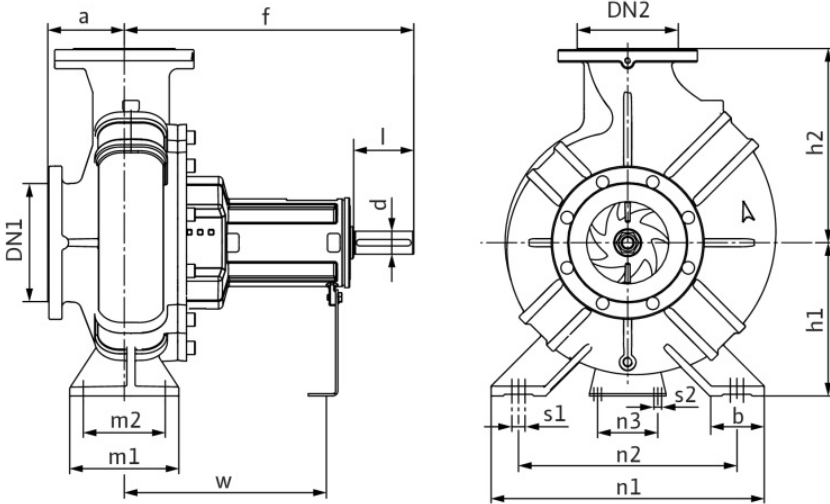
Materials

Pump housing 5.1301/EN-GJL-250

Impeller EN-GJL-200
Lantern 5.1301/EN-GJL-250
Shaft 1.4021
Shaft seal AQ1EGG

Information for order placements

Weight approx.
Item number



Dimensions		mm					
a	140	DN2	DN 100,	h2	280	n2	315
b	80	f	530	l	110	n3	110
d	42	h1	225	m1	160	Ø k	210
dL	19	h1	225	m2	120	Ø d	184
DN1	DN 125,	h2	280	n1	400	Ø D	250



Contact
E-mail
Phone

Customer

Contact
E-mail
Phone

Hydraulic data

Glanded standard pump
Atmos GIGA-N 100/250.1-B-IE4

Project ID: Untitled project 2025-03-01 20:23:09.313

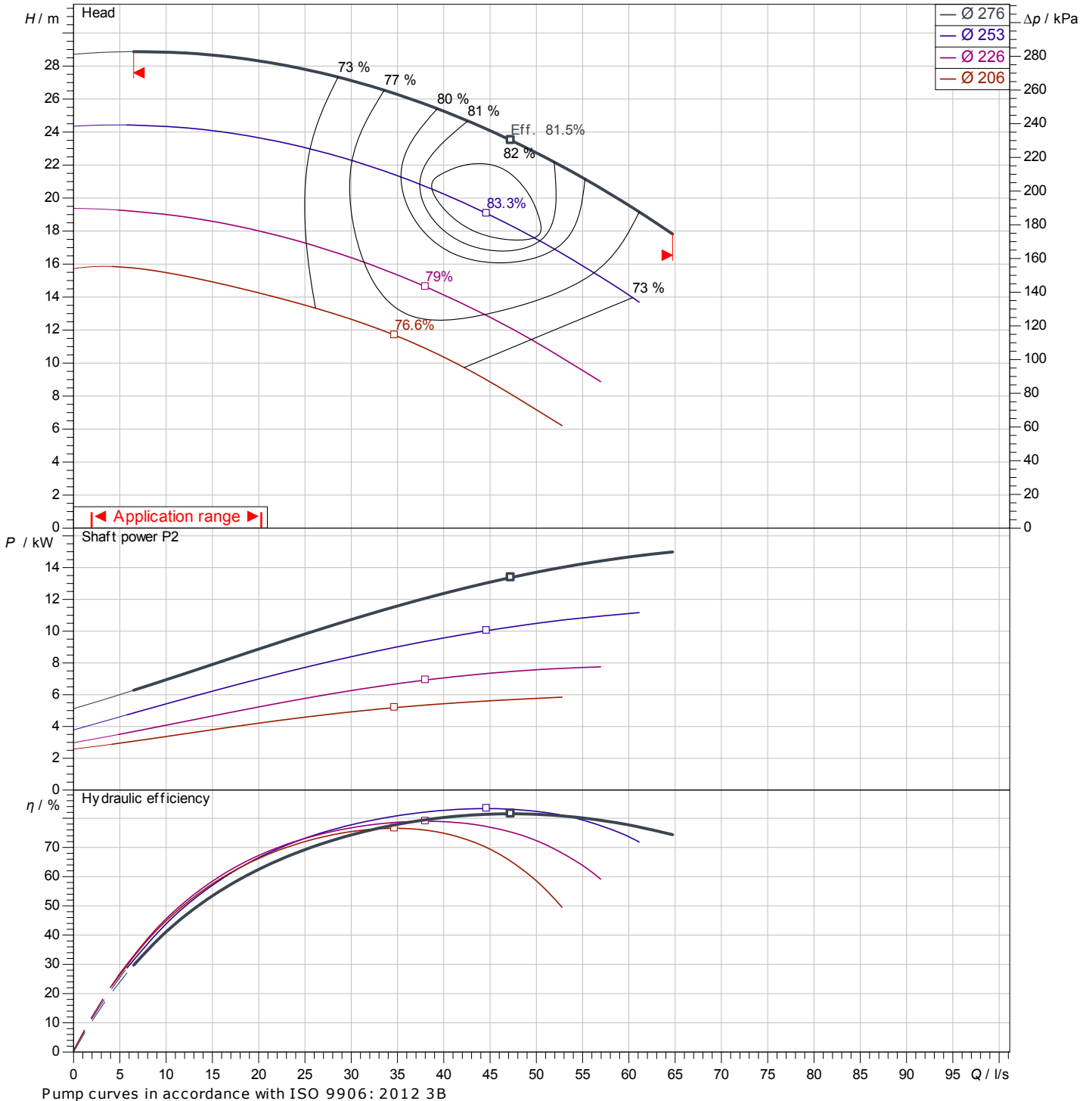
Project name
Installation location
Customer pos. No.

Date: 2025-03-01

Operating data

Rotational speed 1469 1/min	Frequency Hz	Duty point Q =	H =	Suction port DN 125	Discharge port DN 100
---------------------------------------	------------------------	--------------------------	------------	-------------------------------	---------------------------------

Power data referred to: Water; 20°C; 998.3kg/m³; 1.005mm²/s ±10 % tolerance with linear U/f frequency control



Customer

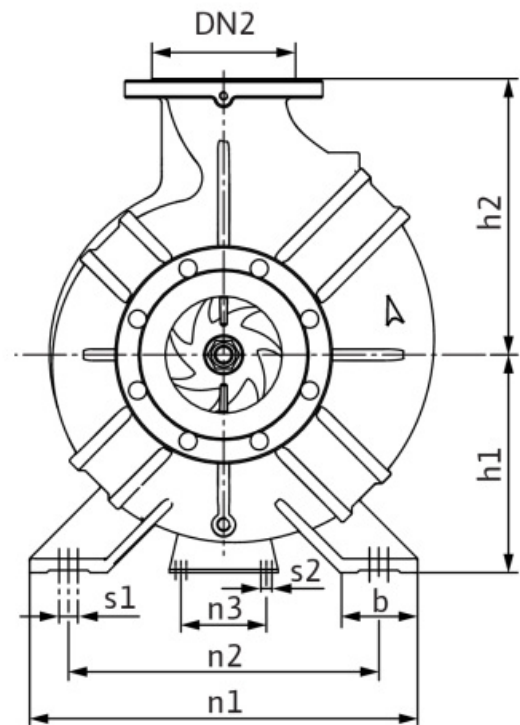
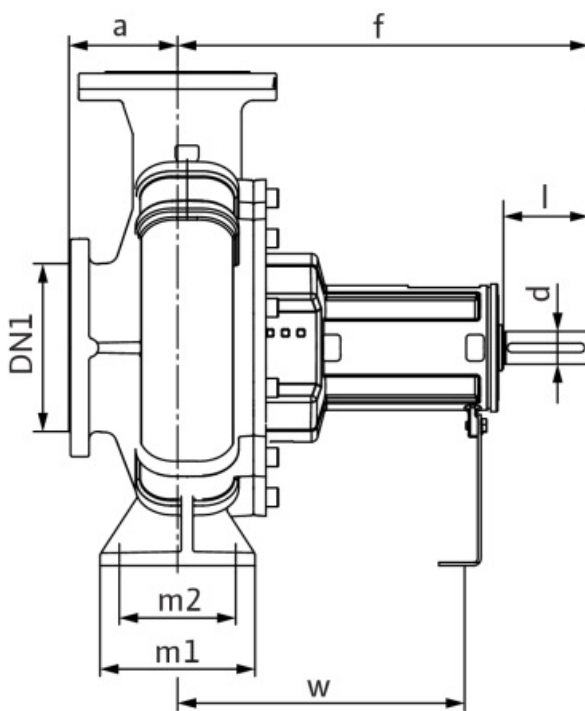
Dimensions

Glanded standard pump
Atmos GIGA-N 100/250.1-B-IE4

Project ID Untitled project 2025-03-01 20:23:09.313

Project name
Installation location
Customer pos. No.

Date 2025-03-01



Bareshaft

Suction side DN 125, PN 16

Discharge side DN 100, PN 16

Dimensions mm

Name	Value	Name	Value	Name	Value	Name	Value
a	140	h1	225	n1	400	s2	12
b	80	h1	225	n2	315	w	370
d	42	h2	280	n3	110	x	140
dL	19	h2	280	Ø k	210		
DN1	DN 125, PN 16	l	110	Ø d	184		
DN2	DN 100, PN 16	m1	160	Ø D	250		
f	530	m2	120	s1	16		