



Contact
E-mail
Phone

Customer

Contact
E-mail
Phone

Technical data

Submersible pump

MTC 32 F 15

With motor

T 13-2/16H

Project ID Untitled project 2025-03-17 11:58:50.811

Project name

Installation location

Customer pos. No.

Date 2025-03-17

Pump

| | |
|-----------------------|---|
| Pump type | MTC 32 F 15 |
| Installation type | Suspension device DN36/1R 52.14650/1 |
| Free passage | 6 mm |
| Nominal speed | 3,480 1/min |
| Rated frequency | 60 Hz |
| Impeller type | Impeller with cutter plate |
| Impeller construction | Open |

Impeller size

| | |
|---------------|--------|
| max. possible | 160 mm |
| min. possible | 150 mm |
| standard | 160 mm |
| designed | 160 mm |

Suction port

| | |
|-----------------|--|
| Rated diameter | |
| Pressure rating | |
| Standard | |

Discharge port

| | |
|-----------------|--|
| Rated diameter | |
| Pressure rating | |
| Standard | |

Weights

| | |
|-----------------|--------------|
| Weight | max. 10 kg |
| Weight of motor | 42.5 kg |
| Weight of unit | max. 52.5 kg |

Materials

| | |
|---------------|------------|
| Pump housing | EN-GJL-250 |
| Impeller | EN-GJL-250 |
| Suction ports | EN-GJL-250 |
| Cutting ring | 1.4034 |
| Rotor | Abrasit |

Motor

| | |
|-----------------------------------|-------------------------|
| Motor name | T 13-2/16H |
| Number of poles | 2 |
| Rated power | 5 kW |
| Rated speed | 3402 1/min |
| Power input with rated power | 6.3 kW |
| Rated voltage | 380 ~3 V |
| Current input with rated power | 10.8 A |
| Efficiency with rated power | 80 % |
| cos phi with rated power | 0.88 |
| cos phi with starting | |
| Rated frequency | 60 Hz |
| Operation type wet | S1 |
| Operation type dry | S2-15 min |
| Starting current, direct starting | 78 A |
| Starting current, star-delta | 26 A |
| Starting torque | 23 Nm |
| Inertia moment | 0.003 kg m ² |
| Degree of protection | IP 68 |
| Sel. explosion protection | |
| Ex-designation | |
| Ex-number | |
| Motor connection cable | 7G1,5 H07RN-F |
| Max. fluid temperature | 40 °C |
| Starts per hour max. | 15 |

Duty point data

| | |
|------------------------------------|---|
| Volume flow | |
| Head | |
| Shaft power P ₂ | |
| Hydr. efficiency η _{hyd.} | |
| Power input P ₁ | |
| Fluid | Water |
| Required pump NPSH | |
| Rotational speed | 3,414 1/min |
| Total efficiency | $= \frac{P_2 * \text{Hydr. efficiency } \eta_{\text{hyd.}}}{P_1}$ |



Contact
E-mail
Phone

Customer

Contact
E-mail
Phone

Performance curves

Submersible pump

MTC 32 F 15

With motor

T 13-2/16H

Project ID

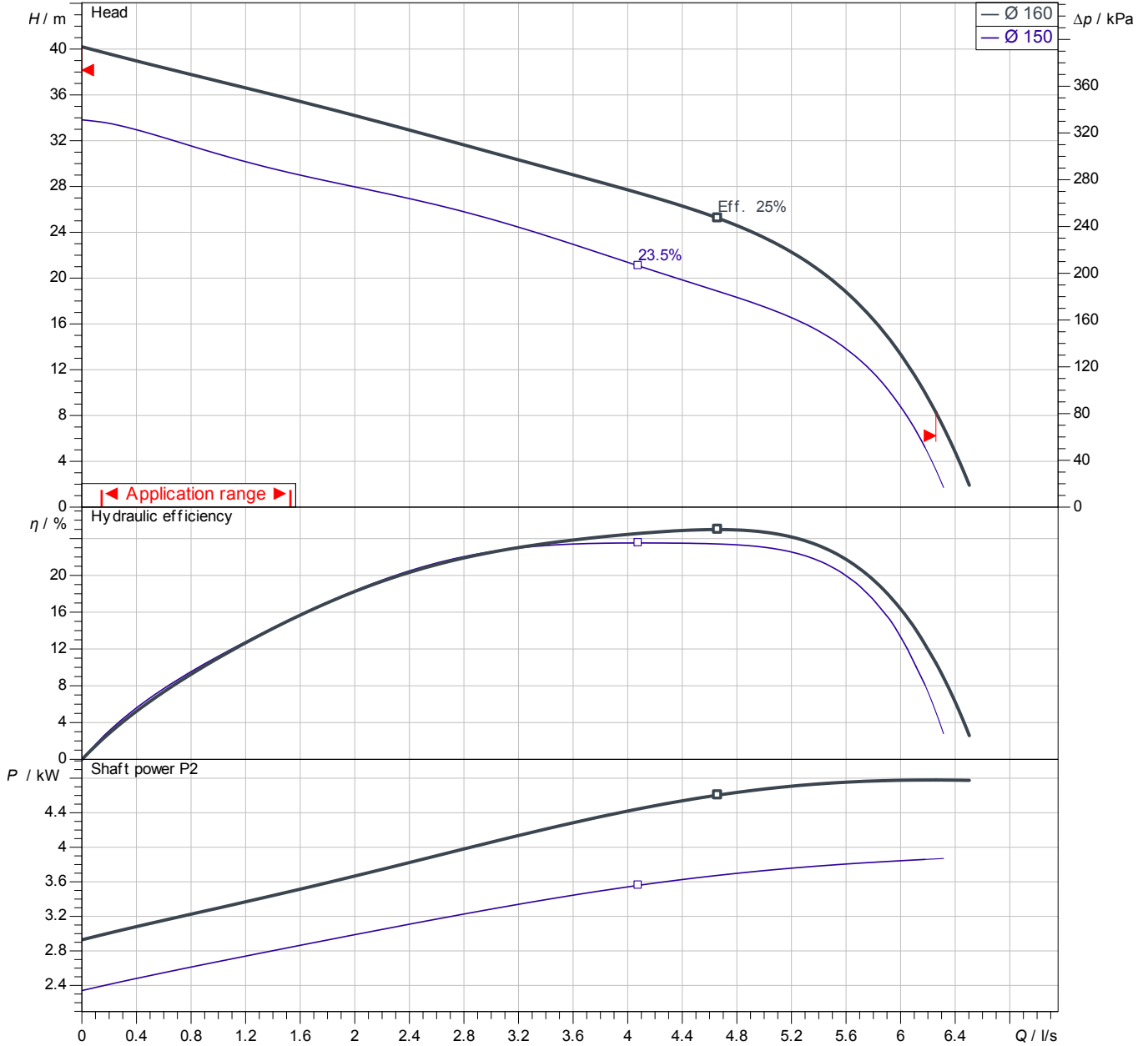
Untitled project 2025-03-17 11:58:50.811

Project name

Installation location

Customer pos. No.

Date 2025-03-17



Power data referred to: Water; 20°C; 998.3kg/m³; 1.005mm²/s
Tolerance as per ISO 9906 / Annex A.2

Pump

| | | |
|---------------|----------|----------------------------|
| Impeller Ø | designed | 160 mm |
| Nominal speed | | 3,402 1/min |
| Frequency | | 60 Hz |
| Impeller type | | Impeller with cutter plate |

Motor

| | |
|---------------------------|------|
| Rated power | 5 kW |
| Sel. explosion protection | |

Duty point data

| | |
|-------------------------|------------|
| Volume flow | |
| Head | |
| Shaft power P2 | |
| Hydr. efficiency η hyd. | |
| Power input P1 | |
| Required pump NPSH | |
| Rotational speed | 3414 1/min |

Dimensions

Submersible pump

MTC 32 F 15

With motor

T 13-2/16H

Project ID

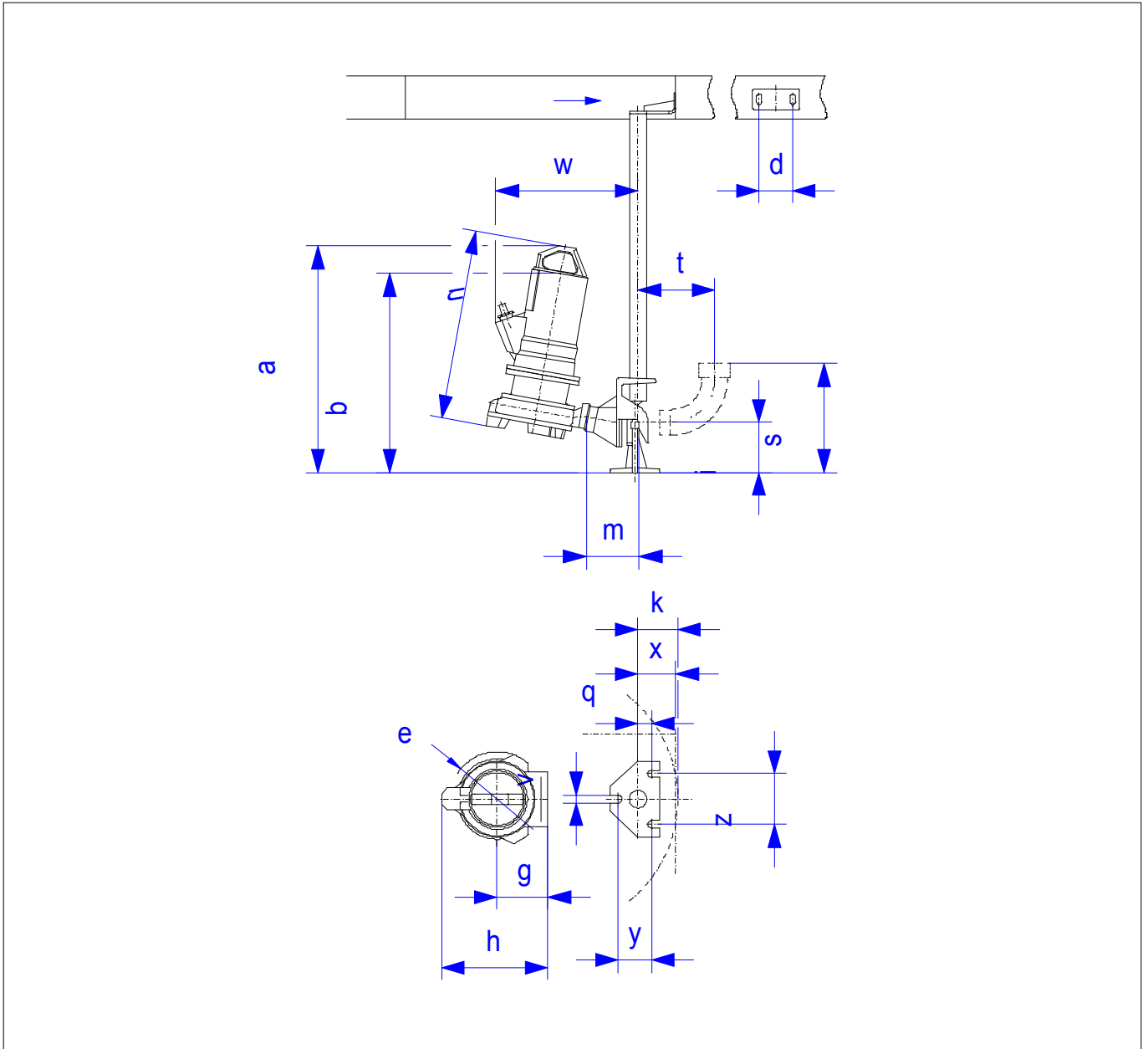
Untitled project 2025-03-17 11:58:50.811

Project name

Installation location

Customer pos. No.

Date 2025-03-17



Dimensions

| Name | Value | Name | Value |
|------|--------|------|--------|
| d | 80 mm | v | 18 mm |
| e | 230 mm | w | 378 mm |
| g | 140 mm | x | 90 mm |
| h | 279 mm | y | 80 mm |
| i | 120 mm | z | 120 mm |
| k | 95 mm | | |
| m | 125 mm | | |
| q | 33 mm | | |
| s | 260 mm | | |
| t | 109 mm | | |

Connections

| | |
|-------------------|--------------------|
| Suction port | |
| Discharge port | |
| Suspension device | DN36/1R 52.14650/1 |