

Customer

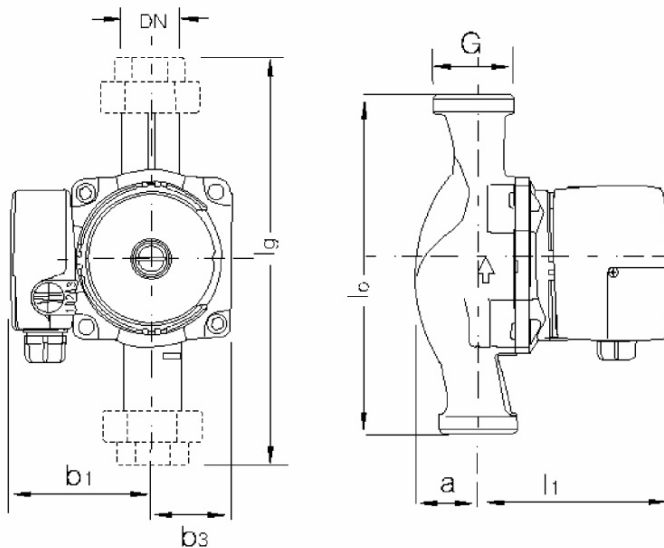
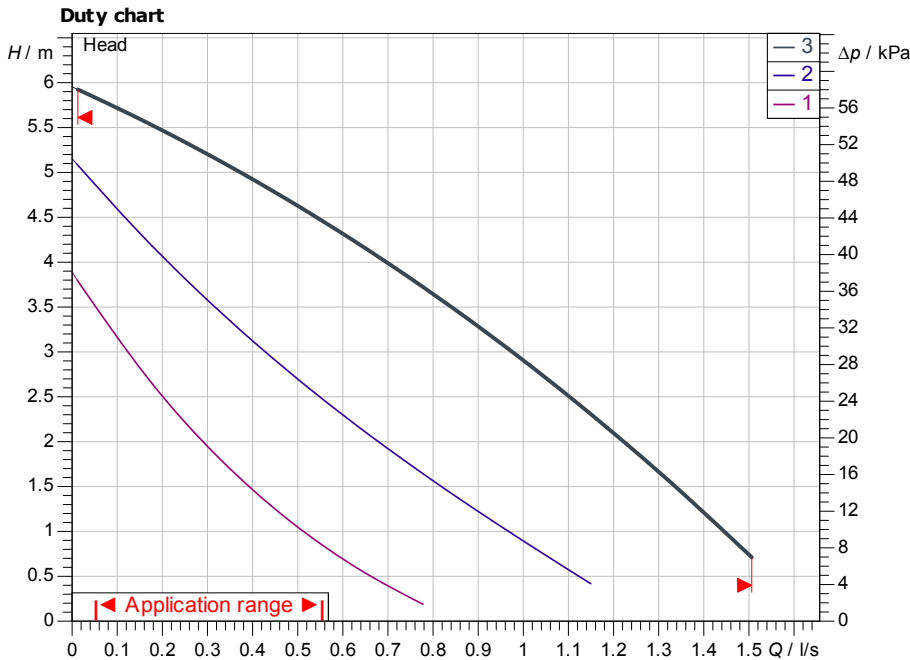
Technical data

Glandless standard pump SB 60

Project ID Untitled project 2025-03-17 06:38:35.502

Project name
Installation location
Customer pos. No.

Date 2025-03-17



Requested data

Flow
Head
Media Water 100 %
Fluid temperature 20.00 °C
Density 998.30 kg/m³
Kin. viscosity 1.00 mm²/s

Hydraulic data (Duty point)

Flow
Head
Power input P1

Product data

Glandless standard pump
SB 60
Max. operating pressure 1,000 kPa
Fluid temperature 2 °C ... +65 °C
Max. ambient temperature 40 °C
Max. permitted total hardness in potable water circulation systems 3.21 mmol/l (18°dH)

Motordata per Motor/Pump

Mains connection 1 ~ 230 V / 50 Hz
Permitted voltage tolerance + - 10 %
Max. speed 0 1/min
Power input P1 114 W
Current consumption 0.5 A
Degree of protection IP42
Insulation class F
Motor protection Not required (blocking-)
Type of connecting cable 1 x PG11

Fitting dimensions

Pipe connection on the suction side G 1 1/2, PN 10
Pipe connection (pressure side) G 1 1/2, PN 10
Port to Port 180 mm

Materials

Pump housing Bronze, CC499K
Impeller PPE-GF30
Shaft Oxide ceramic
Bearing Carbon, synthetic resin-impregnated

Information for order placements

Weight approx. 2.9 kg
Item number 4035483