



Contact  
E-mail  
Phone

Customer

Contact  
E-mail  
Phone

## Technical data

### Rexa SUPRA-V15-84

With motor

### FKT 20.2M-6/32GEx

Project ID                      Untitled project 2025-03-05 10:17:21.271  
Project name  
Installation location  
Customer pos. No.

Date    2025-03-05

#### Pump

Pump type	Rexa SUPRA-V15-84
Installation type	Suspension device
	DN150L/2RK
Free passage	100 mm
Nominal speed	1140
Frequency	60 Hz
Impeller type	Vortex impeller
Impeller construction	Open

#### Impeller Ø

designed	340 mm
standard	340 mm
Max.	340 mm
Min.	268 mm

#### Discharge port

Pressure rating	PN10
Rated diameter	DN150
Standard	EN1092-2-D

#### Suction port

Pressure rating	PN10
Rated diameter	DN150
Standard	EN1092-2-S

#### Weight

Weight	max.	120 kg
Weight of motor		230 kg
Weight of unit	max.	350 kg

#### Materials

Pump housing	EN-GJL-250
Impeller	EN-GJL-250

#### Motor

Motor name	FKT 20.2M-6/32GEx
Number of poles	6
Rated power	15.5 kW
Rated speed	1142 1/min
Power input with rated power	18.6 kW
Rated voltage	230 ~3 V
Current input with rated power	58 A
Efficiency with rated power	83.2 %
cos phi with rated power	0.82
cos phi with starting	0
Rated frequency	60 Hz
Operation type wet	S1
Operation type dry	S1
Starting current, direct starting	335 A
Starting current, star-delta	111.7 A
Starting torque	
Inertia moment	0.0731 kg m <sup>2</sup>
Degree of protection	IP 68
Sel. explosion protection	FM
Ex-designation	II 2G Ex d IIB T4 bzw. T3 G
Ex-number	BVS 20 ATEX E 052X
Motor connection cable	4x10 + 7x1,5 NSSHÖU
Max. fluid temperature	40 °C
Starts per hour max.	15

#### Duty point data

Volume flow	
Head	
Shaft power P <sub>2</sub>	
Hydr. efficiency η <sub>hyd.</sub>	
Power input P <sub>1</sub>	
Fluid	Water
Required pump NPSH	
Rotational speed	1,155 1/min
Max. flow	106.1 l/s
Head H(Q <sub>max</sub> )	3.9 m
Shut off head	22.2 m
Best efficiency point Q(BEP)	51.7 l/s
Best efficiency point H(BEP)	12.6 m
Total efficiency	= $\frac{P_2 * \text{Hydr. efficiency } \eta_{\text{hyd.}}}{P}$

ArtNr



Contact  
E-mail  
Phone

Customer

Contact  
E-mail  
Phone

## Technical data

**Rexa SUPRA-V15-84**

With motor

**FKT 20.2M-6/32GEx**

Project ID                      Untitled project 2025-03-05 10:17:21.271

Project name

Installation location

Date    2025-03-05

### **Tender text**

Submersible sewage pump as floodable, single-stage block unit in stationary, vertical installation for pumping of untreated sewage, which attacks the pumps neither chemically nor mechanically. Pump with radially arranged discharge piece and axial pump intake. Service-friendly unit structure by separated motor and pump housing unit. The duty values must be guaranteed according to ISO 9906, class 2B.



Contact  
E-mail  
Phone

Customer

Contact  
E-mail  
Phone

## Performance curves

### Rexa SUPRA-V15-84

With motor

### FKT 20.2M-6/32GEx

Project ID

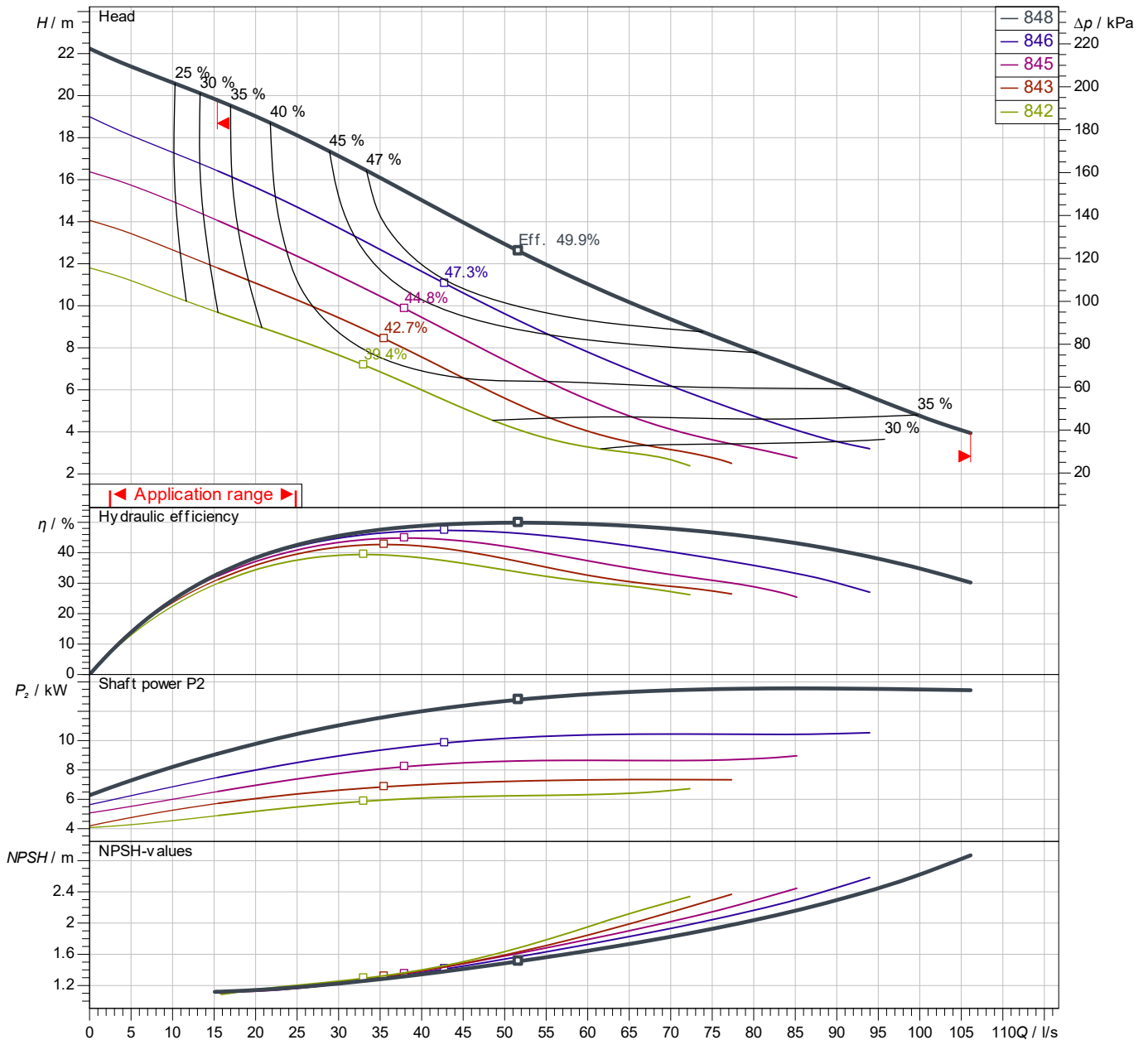
Untitled project 2025-03-05 10:17:21.271

Project name

Installation location

Customer pos. No.

Date 2025-03-05



Power data referred to: Water; 20°C; 998.3kg/m<sup>3</sup>; 1.005mm<sup>2</sup>/s  
Tolerance as per ISO 9906 / Annex A.2

#### Pump

Impeller Ø designed 340 mm  
Nominal speed 1,142 1/min  
Frequency 60 Hz  
Impeller type Vortex impeller

#### Motor

Rated power 15.5 kW  
Sel. explosion protection FM

#### Duty point data

Volume flow  
Head  
Shaft power P<sub>2</sub>  
Hydr. efficiency η<sub>hyd</sub>.  
Power input P<sub>1</sub>  
Required pump NPSH  
Rotational speed 1155 1/min

Contact  
E-mail  
Phone

Customer

Contact  
E-mail  
Phone

## Dimensions

### Rexa SUPRA-V15-84

With motor

### FKT 20.2M-6/32GEx

Project ID

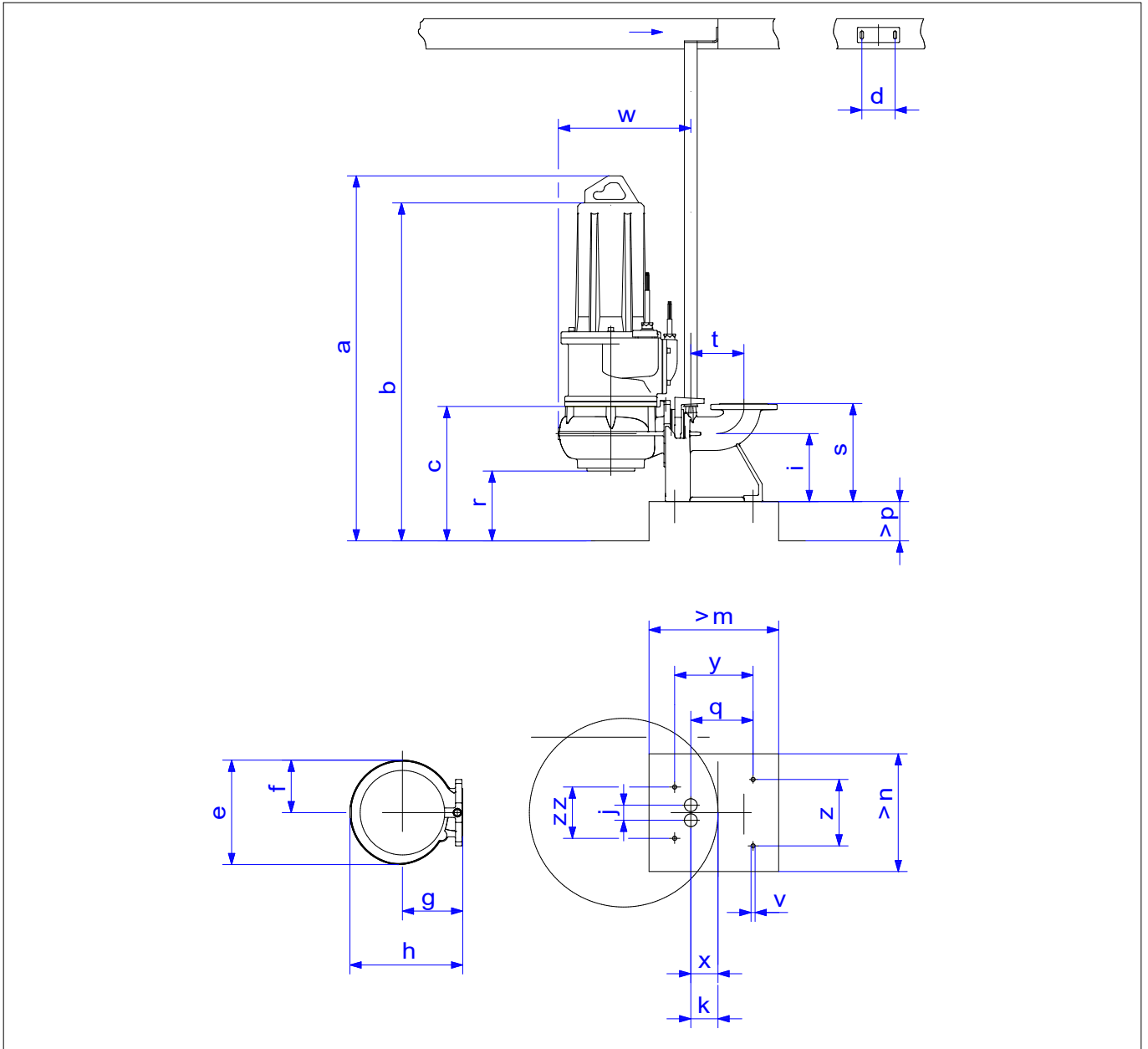
Untitled project 2025-03-05 10:17:21.271

Project name

Installation location

Customer pos. No.

Date 2025-03-05



#### Dimensions

Name	Value	Name	Value
a	1,363 mm	k	98 mm
b = min. water level	433 mm	m	530 mm
c	433 mm	n	490 mm
d	110 mm	p	100 mm
e	569 mm	q	206 mm
f	312 mm	r	110 mm
g	350 mm	s	325 mm
h	621 mm	t	176 mm
i	225 mm	v	13.5 mm
j	50 mm	w	709 mm

#### Connections

Suction port	DN150 PN10
Discharge port	DN150 PN10
Suspension device	DN150L/2RK