



Contact
E-mail
Phone

Customer

Contact
E-mail
Phone

Technical data

FA 15.96Z

With motor

FKT 27.1-4/28K

Project ID Untitled project 2025-03-30 11:34:50.544
Project name
Installation location
Customer pos. No.

Date 2025-03-30

Pump

Pump type	FA 15.96Z
Installation type	Suspension device 2 DN150S/2RK
Free passage	80 mm
Nominal speed	1,450 1/min
Rated frequency	50 Hz
Impeller type	Two-channel
Impeller construction	Closed

Impeller size

max. possible	320 mm
min. possible	280 mm
standard	320 mm
designed	320 mm

Suction port

Rated diameter	DN200
Pressure rating	PN10
Standard	EN1092-2-S

Discharge port

Rated diameter	DN150
Pressure rating	PN10
Standard	EN1092-2-D

Weights

Weight	max. 158 kg
Weight of motor	390 kg
Weight of unit	max. 578 kg

Materials

Pump housing	EN-GJL-250
Stationary wear ring	1.4308
Impeller	EN-GJS-500-7
Mobile wear ring	1.4462/1.4470
Suction ports	EN-GJL-250

Motor

Motor name	FKT 27.1-4/28K
Number of poles	4
Rated power	35 kW
Rated speed	1450 1/min
Power input with rated power	39.8 kW
Rated voltage	400 ~3 V
Current input with rated power	70 A
Efficiency with rated power	88 %
cos phi with rated power	0.82
cos phi with starting	
Rated frequency	50 Hz
Operation type wet	S1
Operation type dry	S1
Starting current, direct starting	375 A
Starting current, star-delta	125 A
Starting torque	480 Nm
Inertia moment	0.17 kg m ²
Degree of protection	IP 68
Sel. explosion protection	
Ex-designation	
Ex-number	
Motor connection cable	4x16 + 7x1,5 NSSHÖU
Max. fluid temperature	40 °C
Starts per hour max.	15

Duty point data

Volume flow	
Head	
Shaft power P ₂	
Hydr. efficiency η _{hyd.}	
Power input P ₁	
Fluid	Water
Required pump NPSH	
Rotational speed	1,454 1/min
Total efficiency	$= \frac{P_2 * \text{Hydr. efficiency } \eta_{\text{hyd.}}}{P_1}$



Contact
E-mail
Phone

Customer

Contact
E-mail
Phone

Performance curves

FA 15.96Z

With motor

FKT 27.1-4/28K

Project ID

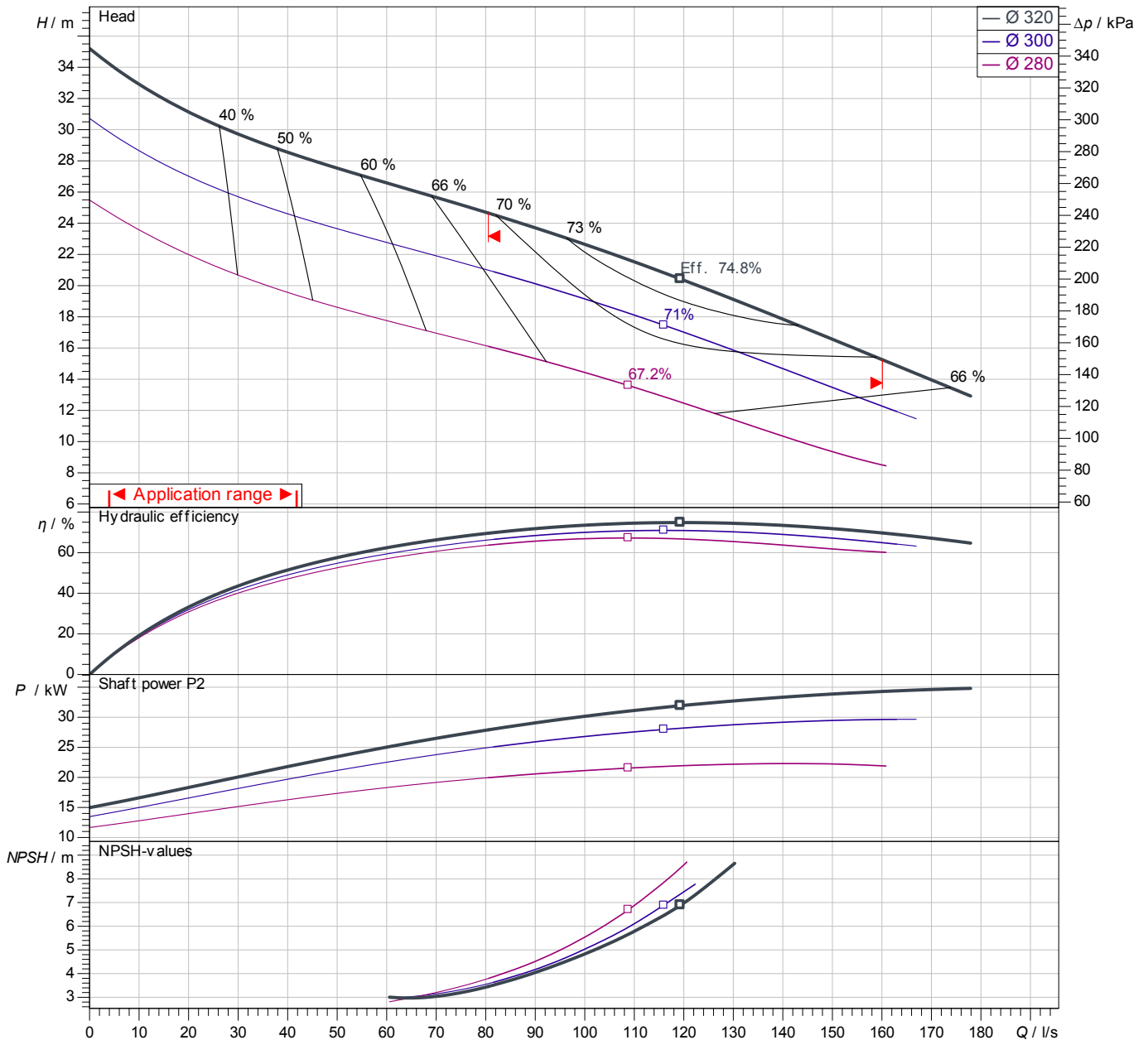
Untitled project 2025-03-30 11:34:50.544

Project name

Installation location

Customer pos. No.

Date 2025-03-30



Power data referred to: Water; 20°C; 998.3kg/m³; 1.005mm²/s
Tolerance as per ISO 9906 / Annex A.2

Pump

Impeller Ø	designed	320 mm
Nominal speed		1,450 1/min
Frequency		50 Hz
Impeller type		Two-channel

Motor

Rated power	35 kW
Sel. explosion protection	

Duty point data

Volume flow	
Head	
Shaft power P2	
Hydr. efficiency η hyd.	
Power input P1	
Required pump NPSH	
Rotational speed	1454 1/min

Dimensions

FA 15.96Z

With motor

FKT 27.1-4/28K

Project ID

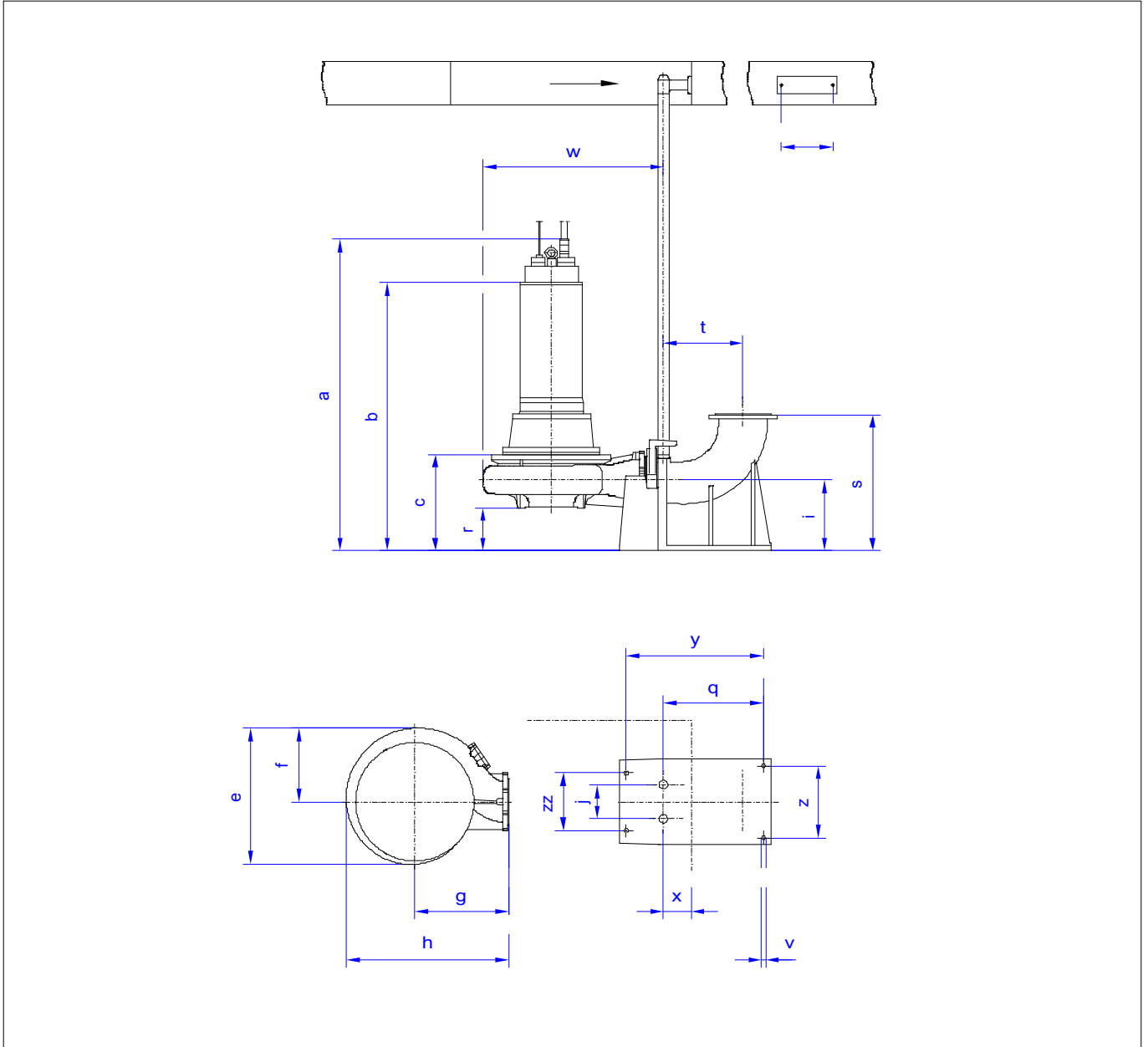
Untitled project 2025-03-30 11:34:50.544

Project name

Installation location

Customer pos. No.

Date 2025-03-30



Dimensions

Name	Value	Name	Value
a	1,661 mm	q	291 mm
b = min. water level	415 mm	r	150 mm
c	415 mm	s	540 mm
d	270 mm	t	241 mm
e	660 mm	v	18 mm
f	375 mm	w	862 mm
g	450 mm	x	120 mm
h	773 mm	y	420 mm
i	320 mm	z	280 mm
j	140 mm	zz	220 mm

Connections

Suction port	DN200 PN10
Discharge port	DN150 PN10
Suspension device 2	DN150S/2RK