



Contact
E-mail
Phone

Customer

Contact
E-mail
Phone

Technical data

FA 25.31Z

With motor

FKT 20.2M-6/32G

Project ID Untitled project 2025-03-30 11:34:50.544
Project name
Installation location
Customer pos. No.

Date 2025-03-30

Pump

Pump type	FA 25.31Z
Installation type	Suspension device
	DN250/2R
Free passage	125 mm
Nominal speed	950 1/min
Rated frequency	50 Hz
Impeller type	Two-channel
Impeller construction	Closed

Impeller size

max. possible	278 mm
min. possible	245 mm
standard	278 mm
designed	278 mm

Suction port

Rated diameter	DN200
Pressure rating	PN10
Standard	EN1092-2-S

Discharge port

Rated diameter	DN250
Pressure rating	PN10
Standard	EN1092-2-D

Weights

Weight	max. 120 kg
Weight of motor	230 kg
Weight of unit	max. 350 kg

Materials

Pump housing	EN-GJL-250
Stationary wear ring	1.4308
Impeller	EN-GJL-250
Mobile wear ring	1.4462/1.4470

Motor

Motor name	FKT 20.2M-6/32G
Number of poles	6
Rated power	13 kW
Rated speed	948 1/min
Power input with rated power	15.8 kW
Rated voltage	400 ~3 V
Current input with rated power	28.1 A
Efficiency with rated power	82.5 %
cos phi with rated power	0.81
cos phi with starting	
Rated frequency	50 Hz
Operation type wet	S1
Operation type dry	S1
Starting current, direct starting	168 A
Starting current, star-delta	56 A
Starting torque	17148 Nm
Inertia moment	0.0731 kg m ²
Degree of protection	IP 68
Sel. explosion protection	
Ex-designation	
Ex-number	
Motor connection cable	4x4 + 7x1,5 NSSHÖU
Max. fluid temperature	40 °C
Starts per hour max.	15

Duty point data

Volume flow	
Head	
Shaft power P ₂	
Hydr. efficiency η _{hyd.}	
Power input P ₁	
Fluid	Water
Required pump NPSH	
Rotational speed	957 1/min
Total efficiency	$= \frac{P_2 * \text{Hydr. efficiency } \eta_{\text{hyd.}}}{P_1}$



Contact
E-mail
Phone

Customer

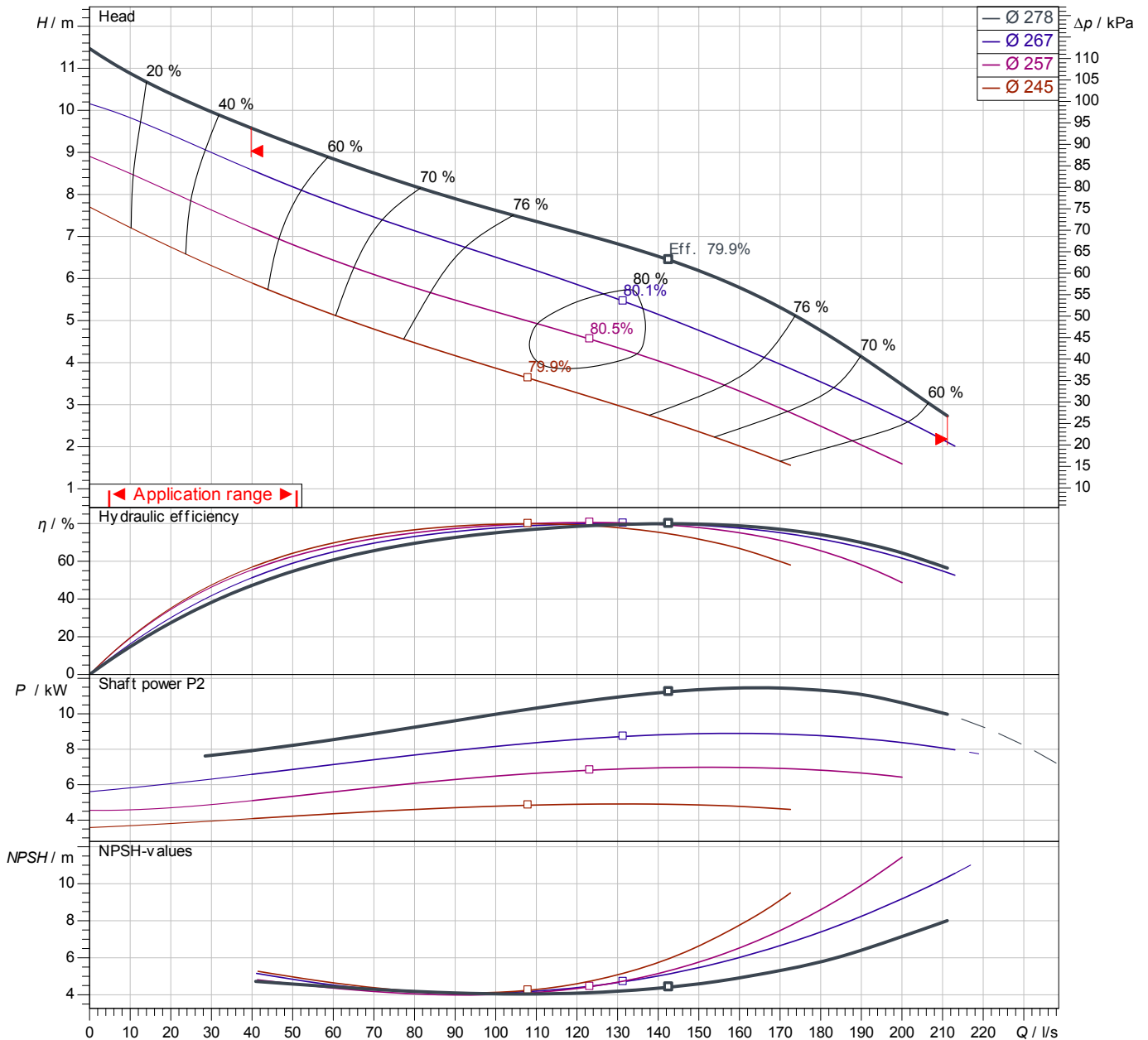
Contact
E-mail
Phone

Performance curves

FA 25.31Z
With motor
FKT 20.2M-6/32G

Project ID: Untitled project 2025-03-30 11:34:50.544
Project name
Installation location
Customer pos. No.

Date 2025-03-30



Power data referred to: Water; 20°C; 998.3kg/m³; 1.005mm²/s
Tolerance as per ISO 9906 / Annex A.2

Pump

Impeller Ø	designed	278 mm
Nominal speed		948 1/min
Frequency		50 Hz
Impeller type		Two-channel

Motor

Rated power	13 kW
Sel. explosion protection	

Duty point data

Volume flow	
Head	
Shaft power P2	
Hydr. efficiency η hyd.	
Power input P1	
Required pump NPSH	
Rotational speed	957 1/min

Dimensions

FA 25.31Z

With motor

FKT 20.2M-6/32G

Project ID

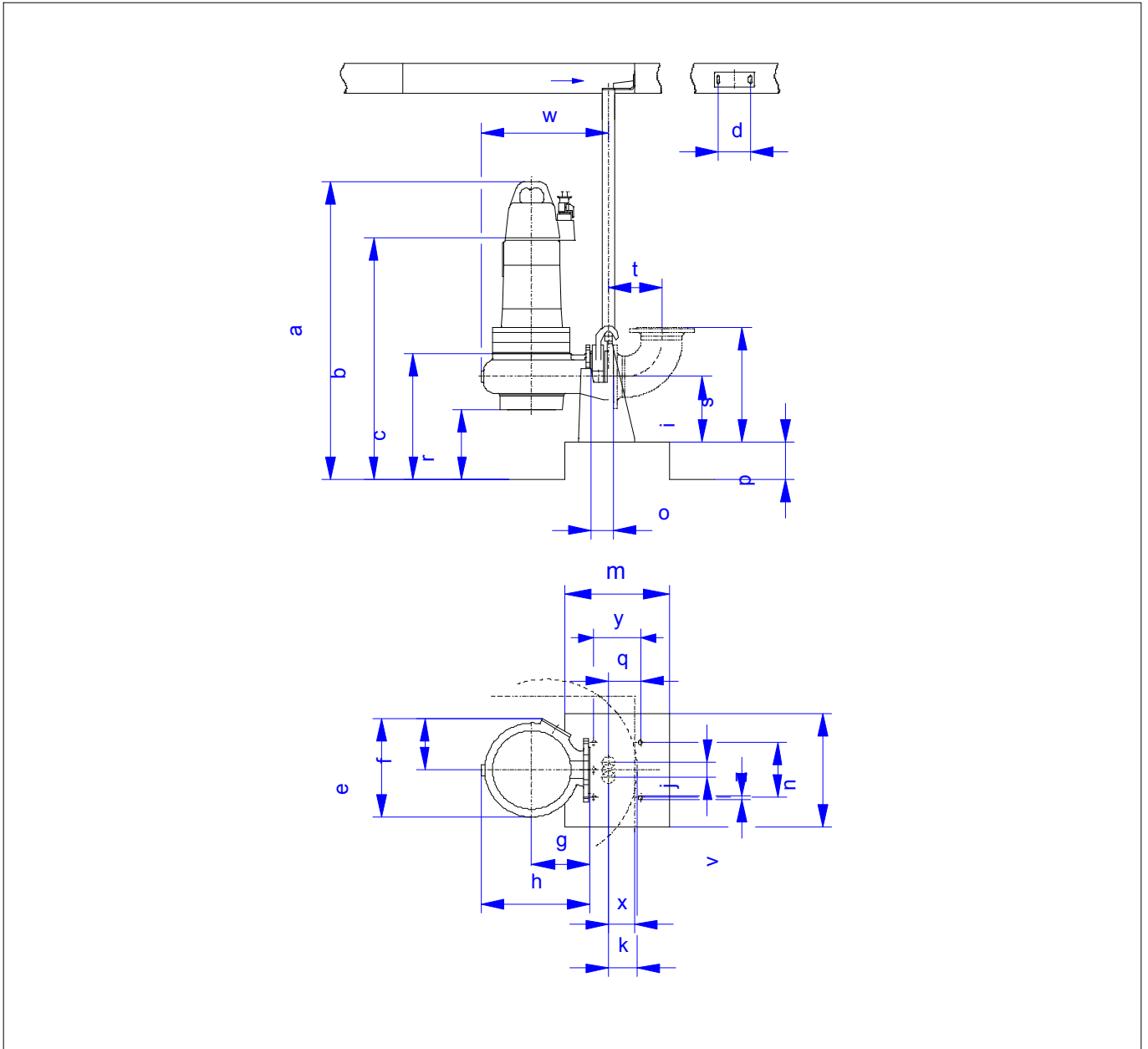
Untitled project 2025-03-30 11:34:50.544

Project name

Installation location

Customer pos. No.

Date 2025-03-30



Dimensions

Name	Value	Name	Value
a	1,415 mm	m	600 mm
b = min. water level	485 mm	n	650 mm
c	485 mm	o	127 mm
d	120 mm	p	140 mm
e	655 mm	q	135 mm
f	400 mm	r	250 mm
g	400 mm	s	600 mm
h	713 mm	t	378 mm
i	250 mm	v	25 mm
j	120 mm	w	812 mm

Connections

Suction port	DN200 PN10
Discharge port	DN250 PN10
Suspension device	DN250/2R