



Contact
E-mail
Phone

Customer

Contact
E-mail
Phone

Technical data

FA 05.11W

With motor
F 12.1-2/9

Project ID Untitled project 2025-03-30 11:34:50.544
Project name
Installation location
Customer pos. No.

Date 2025-03-30

Pump

Pump type	FA 05.11W
Installation type	Suspension device DN50/2RK
Free passage	40 mm
Nominal speed	2,900 1/min
Rated frequency	50 Hz
Impeller type	Vortex impeller
Impeller construction	Open

Impeller size

max. possible	128 mm
min. possible	100 mm
standard	128 mm
designed	128 mm

Suction port

Rated diameter	DN50
Pressure rating	PN10
Standard	DIN 2543-S

Discharge port

Rated diameter	G2
Pressure rating	PN10
Standard	EMU-D

Weights

Weight	max. 5 kg
Weight of motor	18 kg
Weight of unit	max. 23 kg

Materials

Pump housing	EN-GJL-250
Impeller	EN-GJL-250
Motor housing	EN-GJL-250

Motor

Motor name	F 12.1-2/9
Number of poles	2
Rated power	1.3 kW
Rated speed	2850 1/min
Power input with rated power	1.9 kW
Rated voltage	400 V
Current input with rated power	3.1 A
Efficiency with rated power	70 %
cos phi with rated power	0.86
cos phi with starting	
Rated frequency	50 Hz
Operation type wet	S1
Operation type dry	S1
Starting current, direct starting	16 A
Starting current, star-delta	5.3 A
Starting torque	9 Nm
Inertia moment	0.001 kg m ²
Degree of protection	IP 68
Sel. explosion protection	
Ex-designation	
Ex-number	
Motor connection cable	4G1,5 H07RN
Max. fluid temperature	40
Starts per hour max.	15

Duty point data

Volume flow	
Head	
Shaft power P ₂	
Hydr. efficiency η _{hyd.}	
Power input P ₁	
Fluid	Water
Required pump NPSH	
Rotational speed	2,877 1/min
Total efficiency	$= \frac{P_2 * \text{Hydr. efficiency } \eta_{\text{hyd.}}}{P_1}$



Contact
E-mail
Phone

Customer

Contact
E-mail
Phone

Performance curves

FA 05.11W

With motor
F 12.1-2/9

Project ID

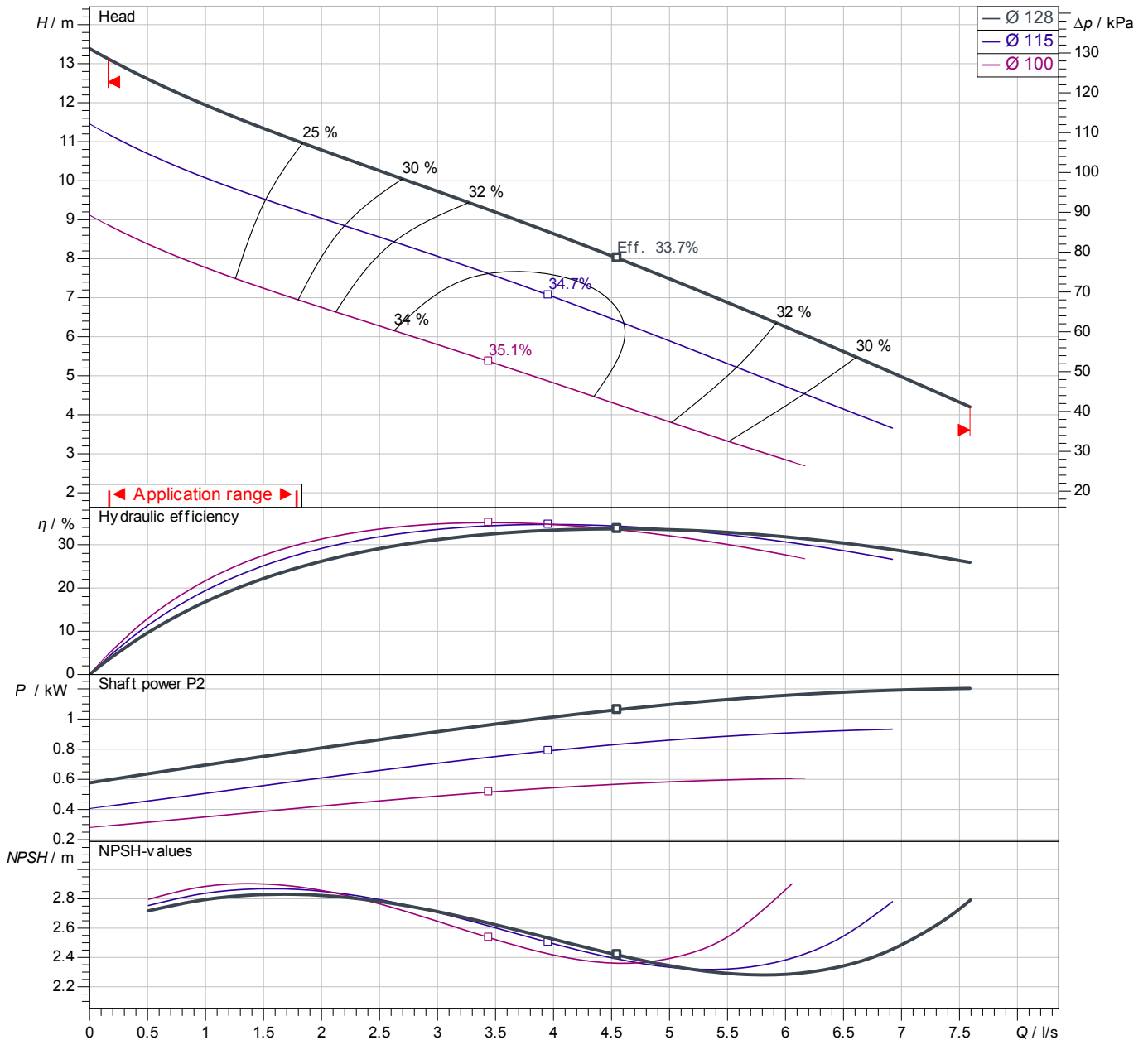
Untitled project 2025-03-30 11:34:50.544

Project name

Installation location

Customer pos. No.

Date 2025-03-30



Power data referred to: Water; 20°C; 998.3kg/m³; 1.005mm²/s
Tolerance as per ISO 9906 / Annex A.2

Pump

Impeller Ø	designed	128 mm
Nominal speed		2,850 1/min
Frequency		50 Hz
Impeller type		Vortex impeller

Motor

Rated power	1.3 kW
Sel. explosion protection	

Duty point data

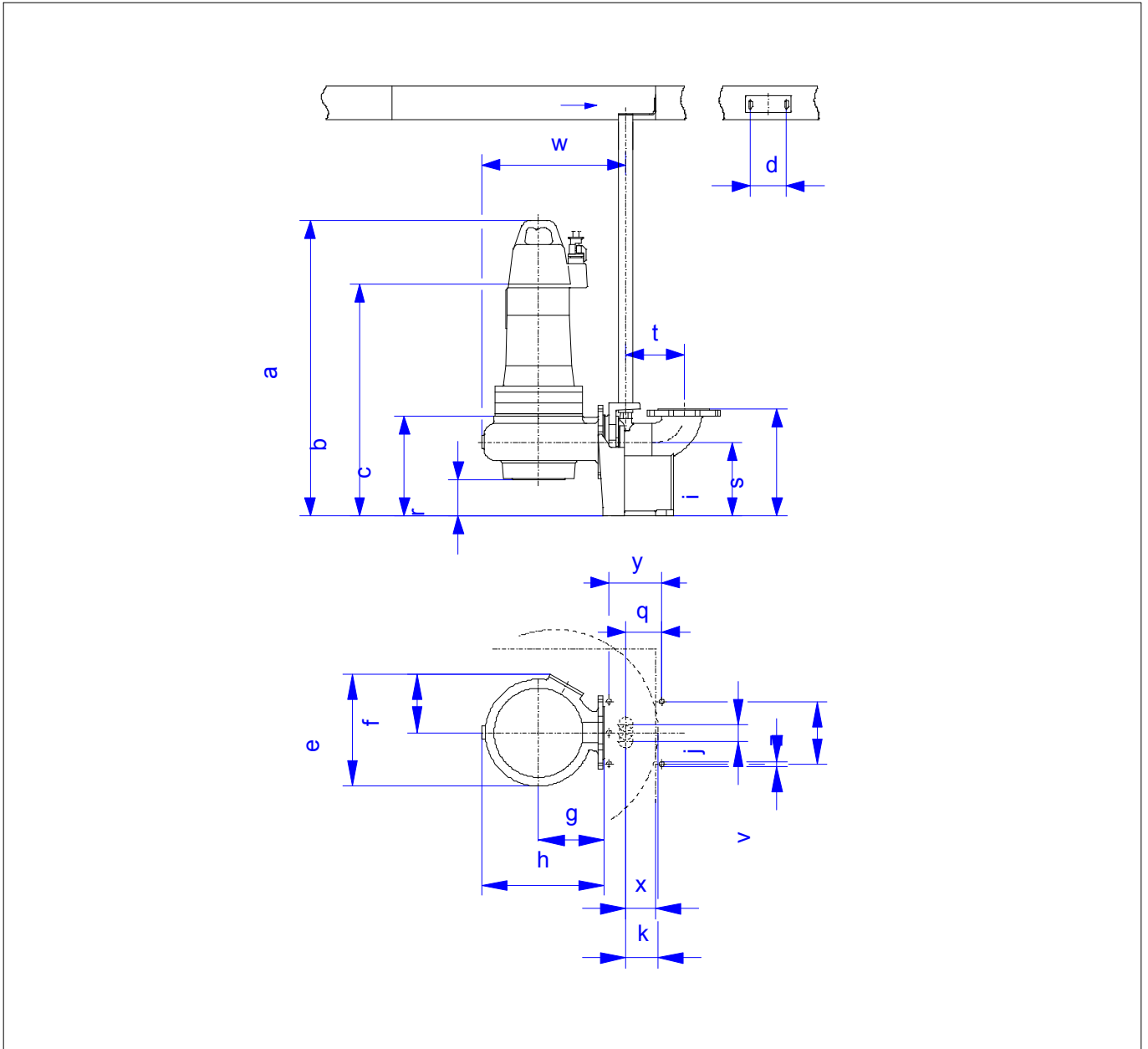
Volume flow	
Head	
Shaft power P2	
Hydr. efficiency η hyd.	
Power input P1	
Required pump NPSH	
Rotational speed	2877 1/min

Dimensions

FA 05.11W
With motor
F 12.1-2/9

Project ID Untitled project 2025-03-30 11:34:50.544
Project name
Installation location
Customer pos. No.

Date 2025-03-30



Dimensions

Name	Value	Name	Value
a	514 mm	q	205 mm
b = min. water level	221 mm	r	127 mm
c	221 mm	s	300 mm
d	50 mm	t	148 mm
e	170 mm	v	15 mm
f	85 mm	w	337 mm
g	113 mm	x	75 mm
h	198 mm	y	172.5 mm
i	160 mm	z	150 mm
j	50 mm		

Connections

Suction port	DN50 PN10
Discharge port	G2 PN10
Suspension device	DN50/2RK