



Contact  
E-mail  
Phone

Customer

Contact  
E-mail  
Phone

## Technical data

**FA 08.34RFE**  
With motor  
**T 13-2/16KRF**

Project ID Untitled project 2025-03-30 11:34:50.544  
Project name  
Installation location  
Customer pos. No.

Date 2025-03-30

### Pump

Pump type	FA 08.34RFE
Installation type	Suspension device DN80/2RK
Free passage	45 mm
Nominal speed	2,900 1/min
Rated frequency	50 Hz
Impeller type	Single-channel
Impeller construction	Closed

### Impeller size

max. possible	150 mm
min. possible	105 mm
standard	150 mm
designed	150 mm

### Suction port

Rated diameter	DN80
Pressure rating	PN10
Standard	EN1092-2-S

### Discharge port

Rated diameter	DN80
Pressure rating	PN10
Standard	EN1092-2-D

### Weights

Weight	max. 18 kg
Weight of motor	40 kg
Weight of unit	max. 58 kg

### Materials

Pump housing	1.4581
Stationary wear ring	1.4462/1.4470
Impeller	1.4581

### Motor

Motor name	T 13-2/16KRF
Number of poles	2
Rated power	5 kW
Rated speed	2835 1/min
Power input with rated power	5.9 kW
Rated voltage	400 ~3 V
Current input with rated power	9.6 A
Efficiency with rated power	85 %
cos phi with rated power	0.88
cos phi with starting	
Rated frequency	50 Hz
Operation type wet	S1
Operation type dry	S2-15 min
Starting current, direct starting	64 A
Starting current, star-delta	21.3 A
Starting torque	23 Nm
Inertia moment	0.003 kg m <sup>2</sup>
Degree of protection	IP 68
Sel. explosion protection	
Ex-designation	
Ex-number	
Motor connection cable	7G1,5 H07RN-F
Max. fluid temperature	40 °C
Starts per hour max.	15

### Duty point data

Volume flow	
Head	
Shaft power P <sub>2</sub>	
Hydr. efficiency η <sub>hyd.</sub>	
Power input P <sub>1</sub>	
Fluid	Water
Required pump NPSH	
Rotational speed	2,861 1/min
Total efficiency	$= \frac{P_2 * \text{Hydr. efficiency } \eta_{\text{hyd.}}}{P_1}$



Contact  
E-mail  
Phone

Customer

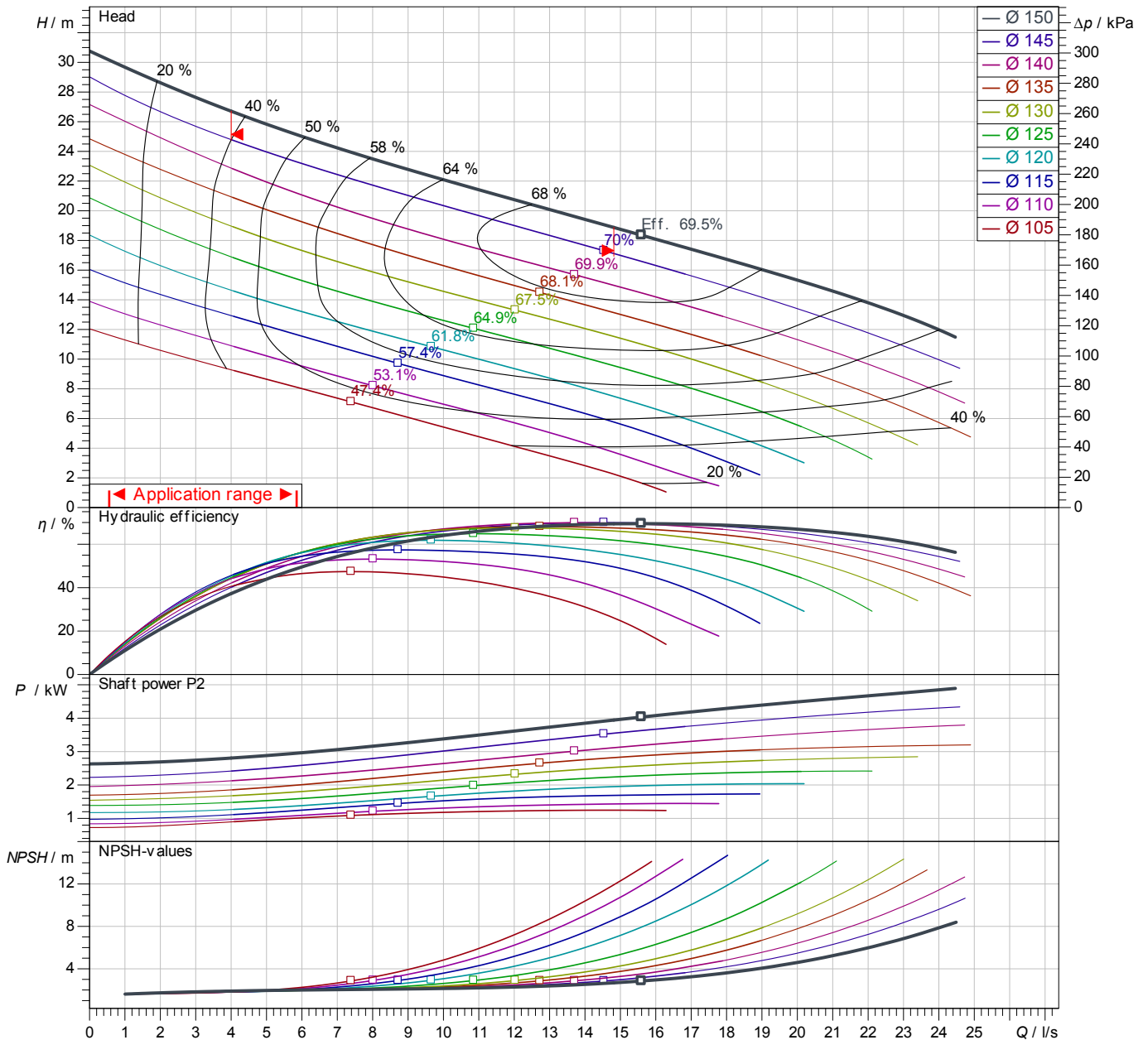
Contact  
E-mail  
Phone

## Performance curves

**FA 08.34RFE**  
With motor  
**T 13-2/16KRF**

Project ID: Untitled project 2025-03-30 11:34:50.544  
Project name  
Installation location  
Customer pos. No.

Date 2025-03-30



Power data referred to: Water; 20°C; 998.3kg/m<sup>3</sup>; 1.005mm<sup>2</sup>/s  
Tolerance as per ISO 9906 / Annex A.2

### Pump

Impeller Ø designed 150 mm  
Nominal speed 2,835 1/min  
Frequency 50 Hz  
Impeller type Single-channel

### Motor

Rated power 5 kW  
Sel. explosion protection

### Duty point data

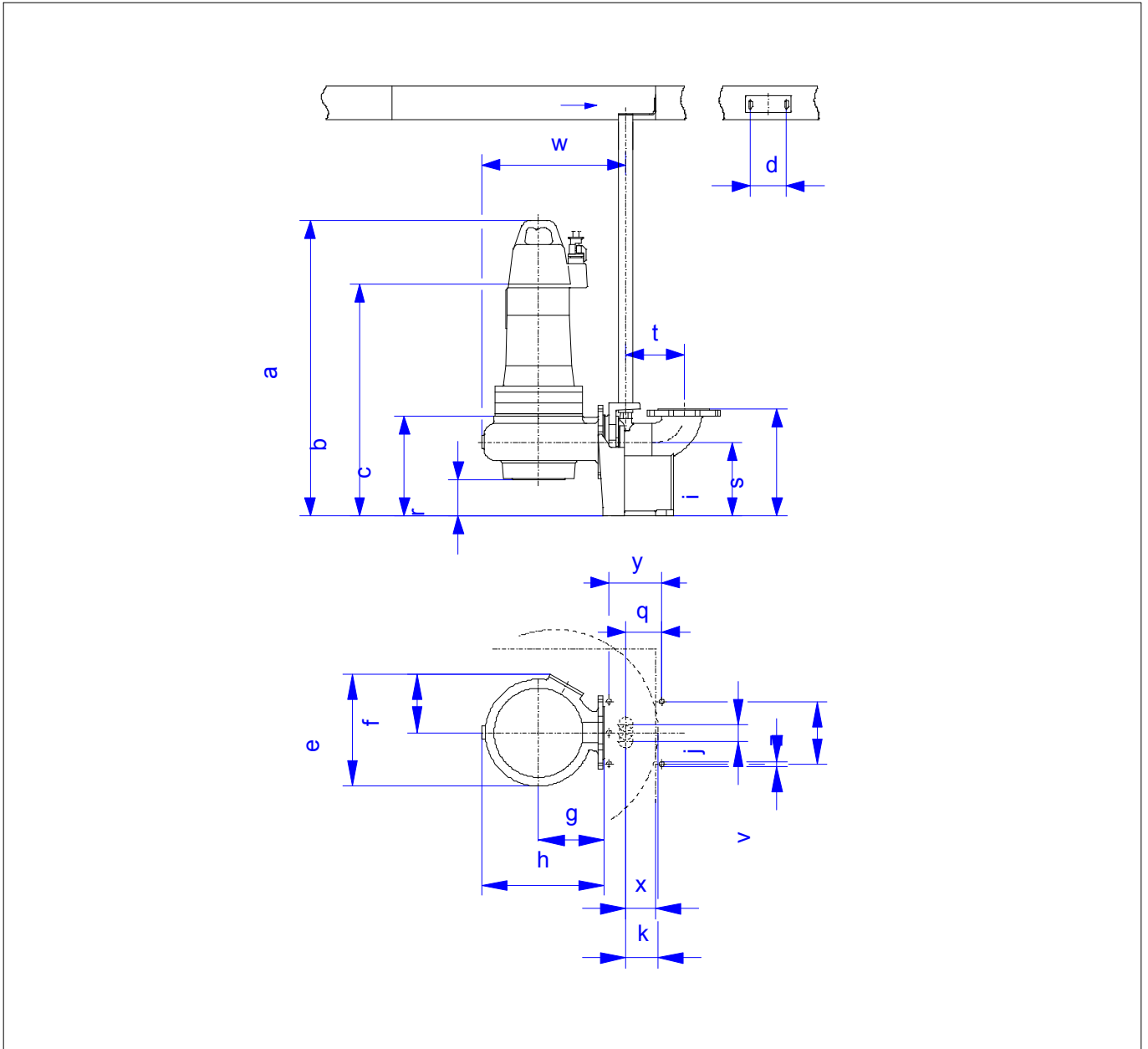
Volume flow  
Head  
Shaft power P2  
Hydr. efficiency η hyd.  
Power input P1  
Required pump NPSH  
Rotational speed 2861 1/min

## Dimensions

**FA 08.34RFE**  
With motor  
**T 13-2/16KRF**

Project ID                      Untitled project 2025-03-30 11:34:50.544  
Project name  
Installation location  
Customer pos. No.

Date    2025-03-30



### Dimensions

Name	Value	Name	Value
a	698 mm	k	98 mm
b = min. water level	623 mm	q	69 mm
c	249 mm	r	133 mm
d	110 mm	s	300 mm
e	230 mm	t	166 mm
f	125 mm	v	15 mm
g	150 mm	w	324 mm
h	265 mm	x	90 mm
i	210 mm	y	120 mm
j	50 mm	z	170 mm

### Connections

Suction port	DN80 PN10
Discharge port	DN80 PN10
Suspension device	DN80/2RK