



Contact
E-mail
Phone

Customer

Contact
E-mail
Phone

Technical data

FA 60.83V

With motor

FKT 63.1-8/80G-E3

Project ID Untitled project 2025-03-30 11:34:50.544
Project name
Installation location
Customer pos. No.

Date 2025-03-30

Pump

Pump type	FA 60.83V
Installation type	Suspension device
	DN600/2RK
Free passage	125 mm
Nominal speed	840 1/min
Rated frequency	50 Hz
Impeller type	Four-channel
Impeller construction	Closed

Impeller size

max. possible	615 mm
min. possible	485 mm
standard	615 mm
designed	615 mm

Suction port

Rated diameter	DN700
Pressure rating	PN10
Standard	EN1092-2-S

Discharge port

Rated diameter	DN600
Pressure rating	PN10
Standard	EN1092-2-D

Weights

Weight	max. 2040 kg
Weight of motor	3980 kg
Weight of unit	max. 6180 kg

Materials

Pump housing	EN-GJL-250
Stationary wear ring	1.4470
Impeller	EN-GJS-500-7
Mobile wear ring	1.4470
Suction ports	EN-GJL-250

Motor

Motor name	FKT 63.1-8/80G-E3
Number of poles	8
Rated power	380 kW
Rated speed	744 1/min
Power input with rated power	397.1 kW
Rated voltage	400 ~3 V
Current input with rated power	734.8 A
Efficiency with rated power	95.7 %
cos phi with rated power	0.78
cos phi with starting	
Rated frequency	50 Hz
Operation type wet	S1
Operation type dry	S1
Starting current, direct starting	3840 A
Starting current, star-delta	1280 A
Starting torque	4538 Nm
Inertia moment	21.98 kg m ²
Degree of protection	IP 68
Sel. explosion protection	
Ex-designation	
Ex-number	
Motor connection cable	2X 3x185/3x95/3 + 7x1,5
Max. fluid temperature	40 °C
Starts per hour max.	10

Duty point data

Volume flow	
Head	
Shaft power P ₂	
Hydr. efficiency η _{hyd.}	
Power input P ₁	
Fluid	Water
Required pump NPSH	
Rotational speed	744.6 1/min
Total efficiency	$= \frac{P_2 * \text{Hydr. efficiency } \eta_{\text{hyd.}}}{P_1}$



Contact
E-mail
Phone

Customer

Contact
E-mail
Phone

Performance curves

FA 60.83V

With motor

FKT 63.1-8/80G-E3

Project ID

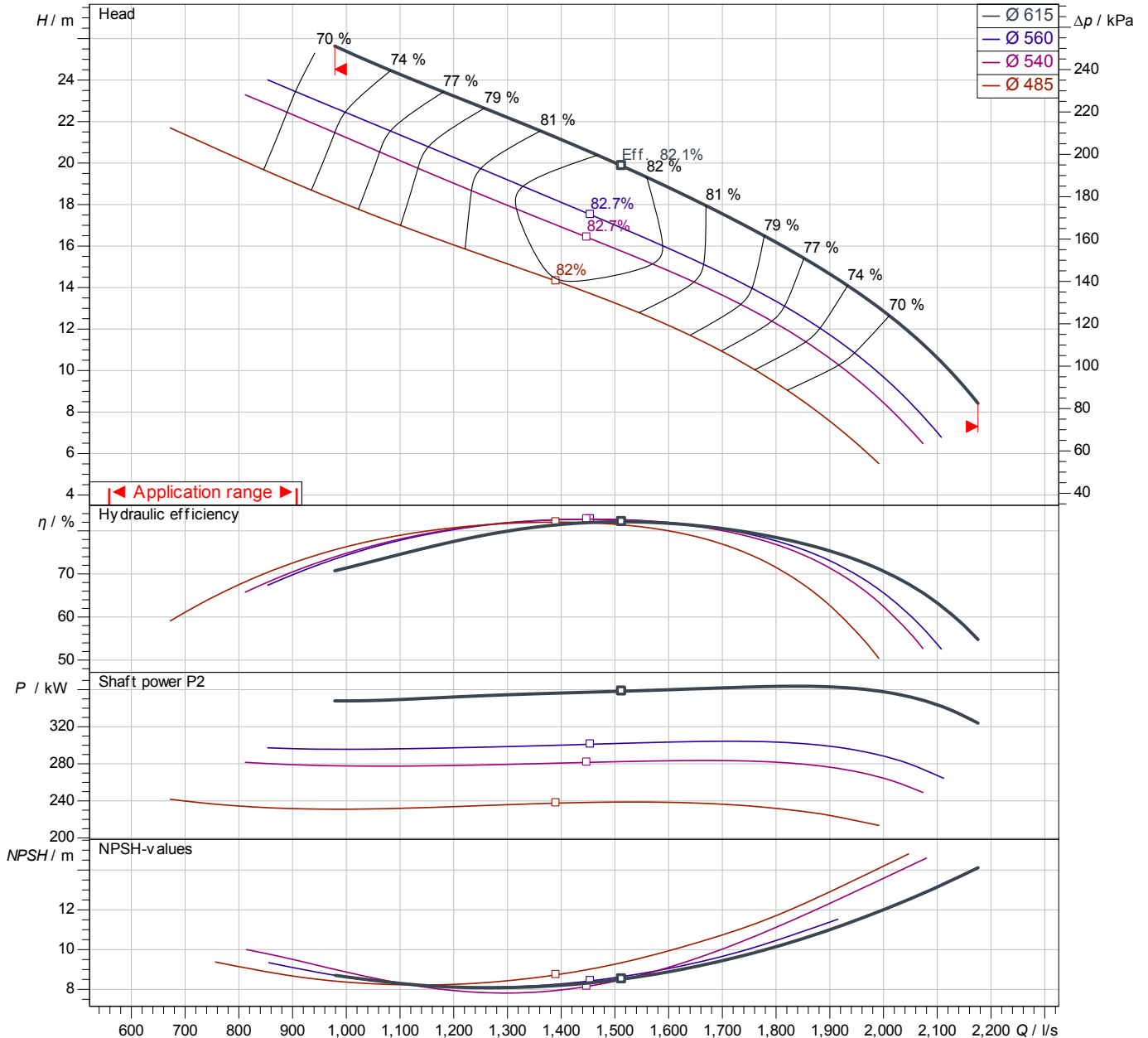
Untitled project 2025-03-30 11:34:50.544

Project name

Installation location

Customer pos. No.

Date 2025-03-30



Power data referred to: Water; 20°C; 998.3kg/m³; 1.005mm²/s
Tolerance as per ISO 9906 / Annex A.2

Pump

Impeller Ø designed 615 mm
Nominal speed 744 1/min
Frequency 50 Hz
Impeller type Four-channel

Motor

Rated power 380 kW
Sel. explosion protection

Duty point data

Volume flow
Head
Shaft power P2
Hydr. efficiency η hyd.
Power input P1
Required pump NPSH
Rotational speed 745 1/min

Dimensions

FA 60.83V

With motor

FKT 63.1-8/80G-E3

Project ID

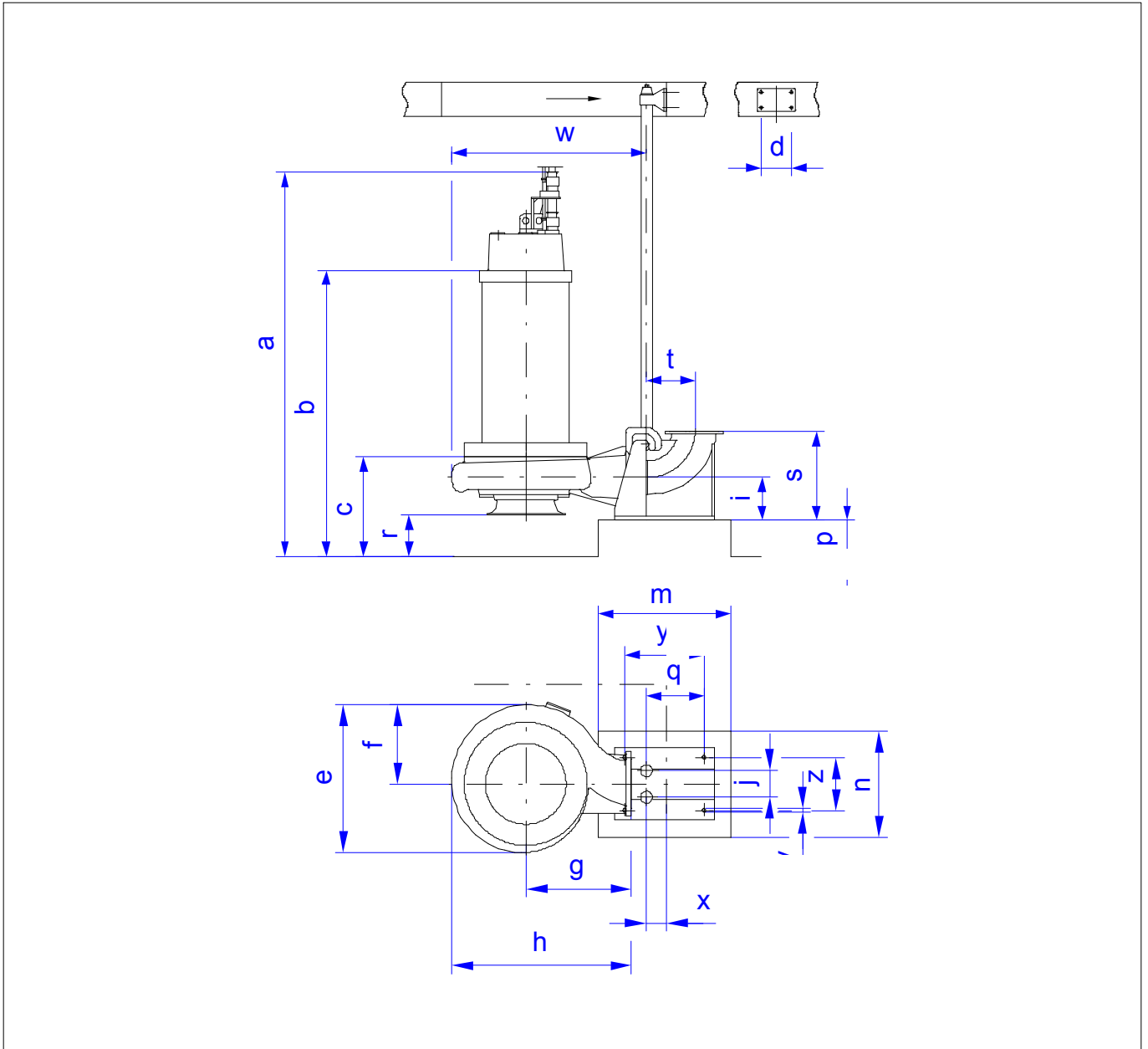
Untitled project 2025-03-30 11:34:50.544

Project name

Installation location

Customer pos. No.

Date 2025-03-30



Dimensions

Name	Value	Name	Value
a	4,351 mm	m	1,580 mm
b = min. water level	1,550 mm	n	1,320 mm
c	1,550 mm	p	700 mm
d	400 mm	q	1,136 mm
e	1,652 mm	r	650 mm
f	944 mm	s	1,000 mm
g	1,150 mm	t	616 mm
h	1,982 mm	v	ÄfÆÄ,Ä,26
i	500 mm	w	2,111 mm
j	300 mm	x	140 mm

Connections

Suction port	DN700 PN10
Discharge port	DN600 PN10
Suspension device	DN600/2RK