



Contact
E-mail
Phone

Customer

Contact
E-mail
Phone

Technical data

Rexa PRO C05 DA-32

With motor
P 13.M-10/EAD1X2-T

Project ID Untitled project 2025-03-30 20:51:59.472

Project name

Installation location

Customer pos. No.

Date 2025-03-30

Pump

Pump type	Rexa PRO C05 DA-32
Installation type	Suspension device DN50/2RK
Free passage	45 mm
Nominal speed	2900
Frequency	50 Hz
Impeller type	Single-channel
Impeller construction	Semi-open

Impeller Ø

designed	140 mm
standard	140 mm
Max.	140 mm
Min.	98 mm

Discharge port

Pressure rating	PN10
Rated diameter	DN50, Size 2, cutoff, Ver. 02
Standard	WILO-D

Suction port

Pressure rating	PN10
Rated diameter	DN50
Standard	WILO-S

Weights

Weight	max.	14.3 kg
Weight of motor		35 kg
Weight of unit	max.	49.3 kg

Materials

Pump housing	EN-GJL-250
Impeller	EN-GJS-500-7

Motor

Motor name	P 13.M-10/EAD1X2-T
Number of poles	2
Rated power	2.5 kW
Rated speed	2848 1/min
Power input with rated power	3.2 kW
Rated voltage	400 ~3 V
Current input with rated power	5.5 A
Efficiency with rated power	78.6 %
cos phi with rated power	0.84
cos phi with starting	
Rated frequency	50 Hz
Operation type wet	S1
Operation type dry	S2-30 min, S3-25%
Starting current, direct starting	31 A
Starting current, star-delta	10.3 A
Starting torque	21 Nm
Inertia moment	0.0017 kg m ²
Degree of protection	IP 68
Sel. explosion protection	ATEX
Ex-designation	
Ex-number	
Motor connection cable	7G1,5 H07RN-F
Max. fluid temperature	40 °C
Starts per hour max.	60

Duty point data

Volume flow	
Head	
Shaft power P2	
Hydr. efficiency η hyd.	
Power input P1	
Fluid	Water
Required pump NPSH	
Rotational speed	2,876 1/min
Max. flow	9.8 l/s
Head H(Q max)	13.7 m
Shut off head	27.6 m
Best efficiency point Q (BEP)	7.4 l/s
Best efficiency point H (BEP)	17.2 m

$$\text{Total efficiency} = \frac{P_2 * \text{Hydr. efficiency } \eta \text{ hyd.}}{P}$$

ArtNr



Contact
E-mail
Phone

Customer

Contact
E-mail
Phone

Technical data

Rexa PRO C05 DA-32

With motor

P 13.M-10/EAD1X2-T

Project ID Untitled project 2025-03-30 20:51:59.472

Project name

Installation location

Date 2025-03-30

Tender text

Submersible Sewage Pump as submersible, single-stage block unit in stationary, vertical installation to pump untreated sewage which doesn't attack the pump neither chemically nor mechanically. Pump with radially arranged discharge piece and axial pump intake. Service-friendly design by separated motor and pump casing. Pumping values to be guaranteed as per ISO 9906 Annex A



Contact
E-mail
Phone

Customer

Contact
E-mail
Phone

Performance curves

Rexa PRO C05 DA-32

With motor

P 13.M-10/EAD1X2-T

Project ID

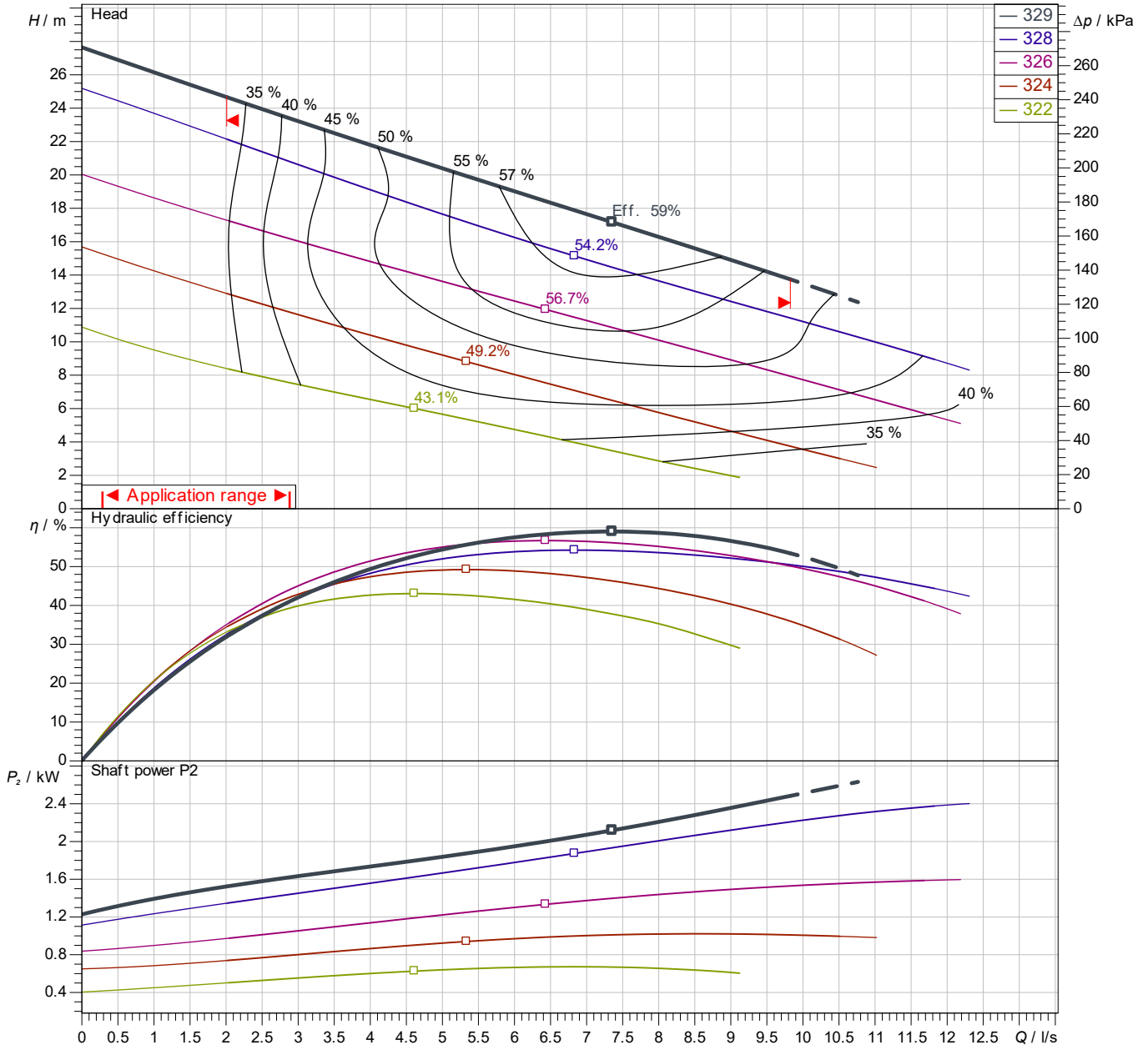
Untitled project 2025-03-30 20:51:59.472

Project name

Installation location

Customer pos. No.

Date 2025-03-30



Power data referred to: Water; 20°C; 998.3kg/m³; 1.005mm²/s
Tolerance as per ISO 9906 / Annex A.2

Pump

Impeller Ø	designed	140 mm
Nominal speed		2,848 1/min
Frequency		50 Hz
Impeller type		Single-channel

Motor

Rated power	2.5 kW
Sel. explosion protection	ATEX

Duty point data

Volume flow	
Head	
Shaft power P2	
Hydr. efficiency η hyd.	
Power input P1	
Required pump NPSH	
Rotational speed	2876 1/min

Contact
E-mail
Phone

Customer

Contact
E-mail
Phone

Dimensions

Rexa PRO C05 DA-32

With motor

P 13.M-10/EAD1X2-T

Project ID

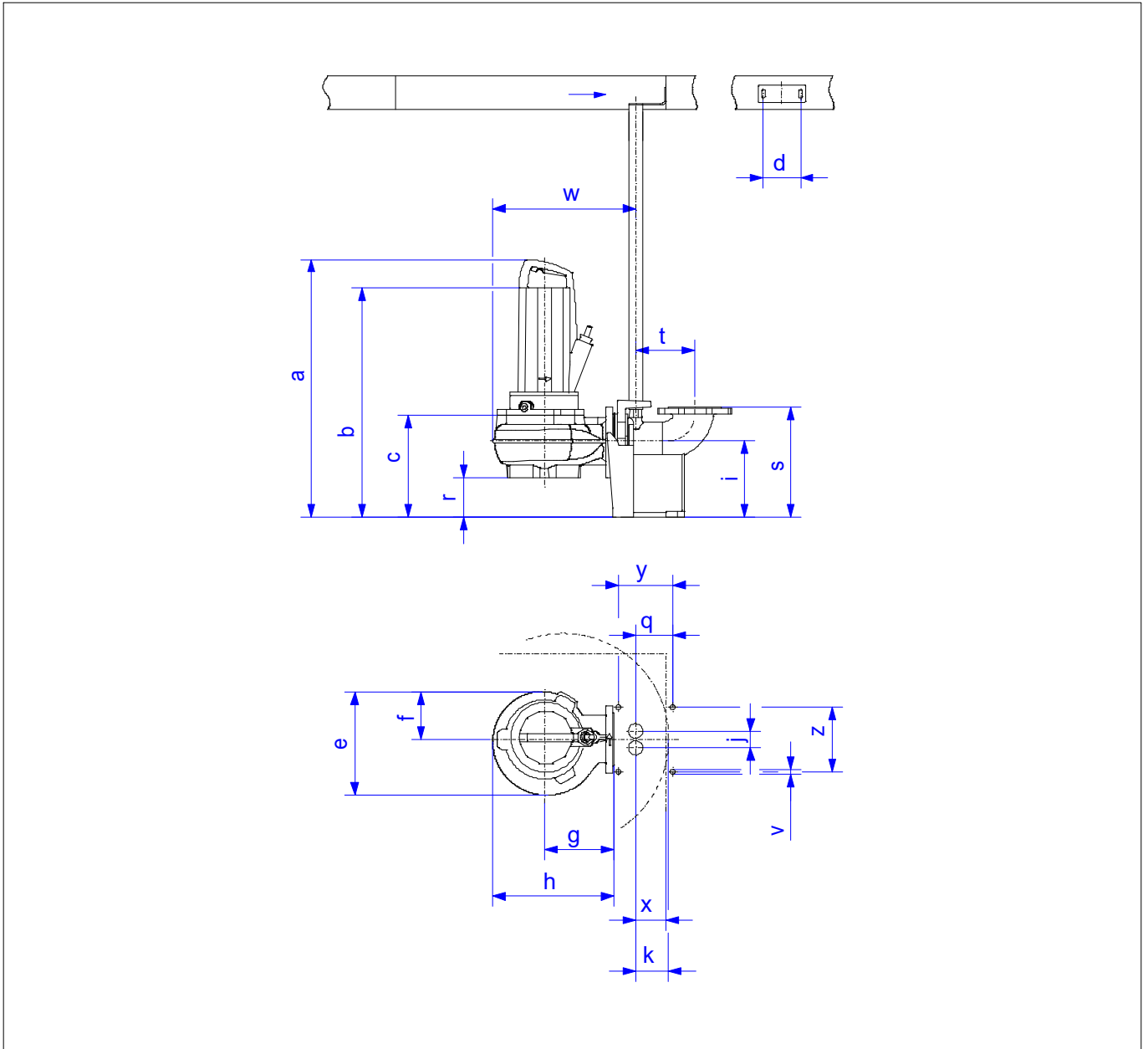
Untitled project 2025-03-30 20:51:59.472

Project name

Installation location

Customer pos. No.

Date 2025-03-30



Dimensions

Name	Value	Name	Value
a	682 mm	k	78 mm
b = min. water level	204 mm	q	205 mm
c	204 mm	r	99 mm
d	50 mm	s	300 mm
e	238 mm	t	148 mm
f	130 mm	v	15 mm
g	150 mm	w	322 mm
h	268 mm	x	75 mm
i	160 mm	y	172.5 mm
j	50 mm	z	150 mm

Connections

Suction port	DN50 PN10
Discharge port	DN50, Size 2, cutoff, Ver. 02 PN10
Suspension device	DN50/2RK