



Contact  
E-mail  
Phone

Customer

Contact  
E-mail  
Phone

## Technical data

### FA 10.78Z With motor T 24-6/22K

Project ID                      Untitled project 2025-03-30 11:34:50.544  
Project name  
Installation location  
Customer pos. No.

Date    2025-03-30

#### Pump

Pump type	FA 10.78Z
Installation type	Suspension device 2 DN150L/2RK
Free passage	80 mm
Nominal speed	950 1/min
Rated frequency	50 Hz
Impeller type	Two-channel
Impeller construction	Closed

#### Impeller size

max. possible	450 mm
min. possible	330 mm
standard	450 mm
designed	450 mm

#### Suction port

Rated diameter	DN100
Pressure rating	PN10
Standard	EN1092-2-S

#### Discharge port

Rated diameter	DN100
Pressure rating	PN10
Standard	EN1092-2-D

#### Weights

Weight	max. 171 kg
Weight of motor	211 kg
Weight of unit	max. 382 kg

#### Materials

Pump housing	EN-GJS-500-7
Stationary wear ring	1.4308
Impeller	EN-GJS-500-7
Mobile wear ring	1.4462/1.4470
Suction ports	EN-GJL-250

#### Motor

Motor name	T 24-6/22K
Number of poles	6
Rated power	16.5 kW
Rated speed	960 1/min
Power input with rated power	19.9 kW
Rated voltage	400 ~3 V
Current input with rated power	33.4 A
Efficiency with rated power	83 %
cos phi with rated power	0.86
cos phi with starting	
Rated frequency	50 Hz
Operation type wet	S1
Operation type dry	
Starting current, direct starting	200 A
Starting current, star-delta	66.7 A
Starting torque	369 Nm
Inertia moment	0.1278 kg m <sup>2</sup>
Degree of protection	IP 68
Sel. explosion protection	
Ex-designation	
Ex-number	
Motor connection cable	4x4 + 2x1,5 NSSHÖU
Max. fluid temperature	40 °C
Starts per hour max.	15

#### Duty point data

Volume flow	
Head	
Shaft power P <sub>2</sub>	
Hydr. efficiency η <sub>hyd.</sub>	
Power input P <sub>1</sub>	
Fluid	Water
Required pump NPSH	
Rotational speed	964.3 1/min
Total efficiency	$= \frac{P_2 * \text{Hydr. efficiency } \eta_{\text{hyd.}}}{P_1}$



Contact  
E-mail  
Phone

Customer

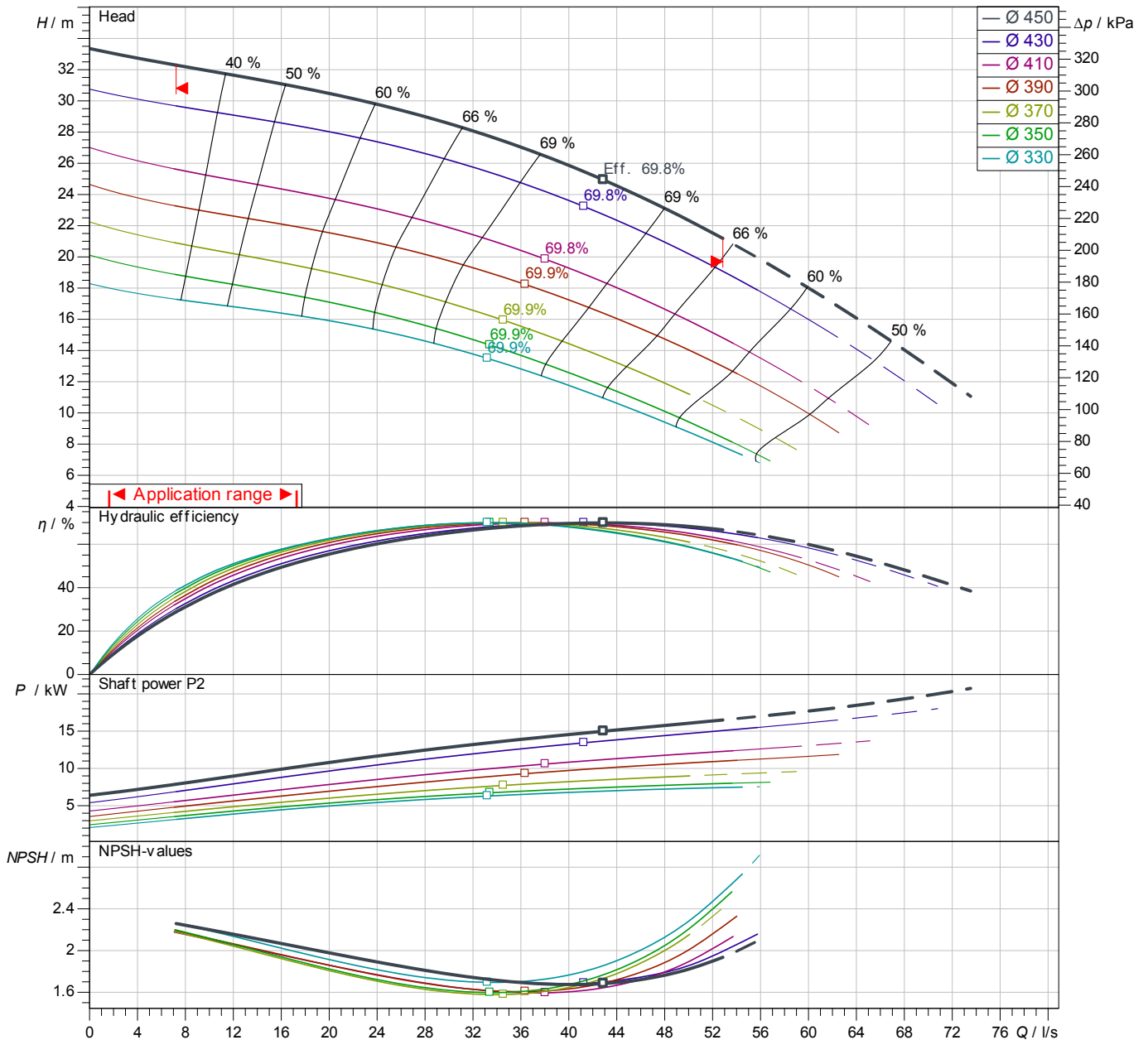
Contact  
E-mail  
Phone

# Performance curves

**FA 10.78Z**  
With motor  
**T 24-6/22K**

Project ID: Untitled project 2025-03-30 11:34:50.544  
Project name  
Installation location  
Customer pos. No.

Date 2025-03-30



Power data referred to: Water; 20°C; 998.3kg/m<sup>3</sup>; 1.005mm<sup>2</sup>/s  
Tolerance as per ISO 9906 / Annex A.2

**Pump**

Impeller Ø	designed	450 mm
Nominal speed		960 1/min
Frequency		50 Hz
Impeller type		Two-channel

**Motor**

Rated power	16.5 kW
Sel. explosion protection	

**Duty point data**

Volume flow	
Head	
Shaft power P2	
Hydr. efficiency η hyd.	
Power input P1	
Required pump NPSH	
Rotational speed	964 1/min

Contact  
E-mail  
Phone

Customer

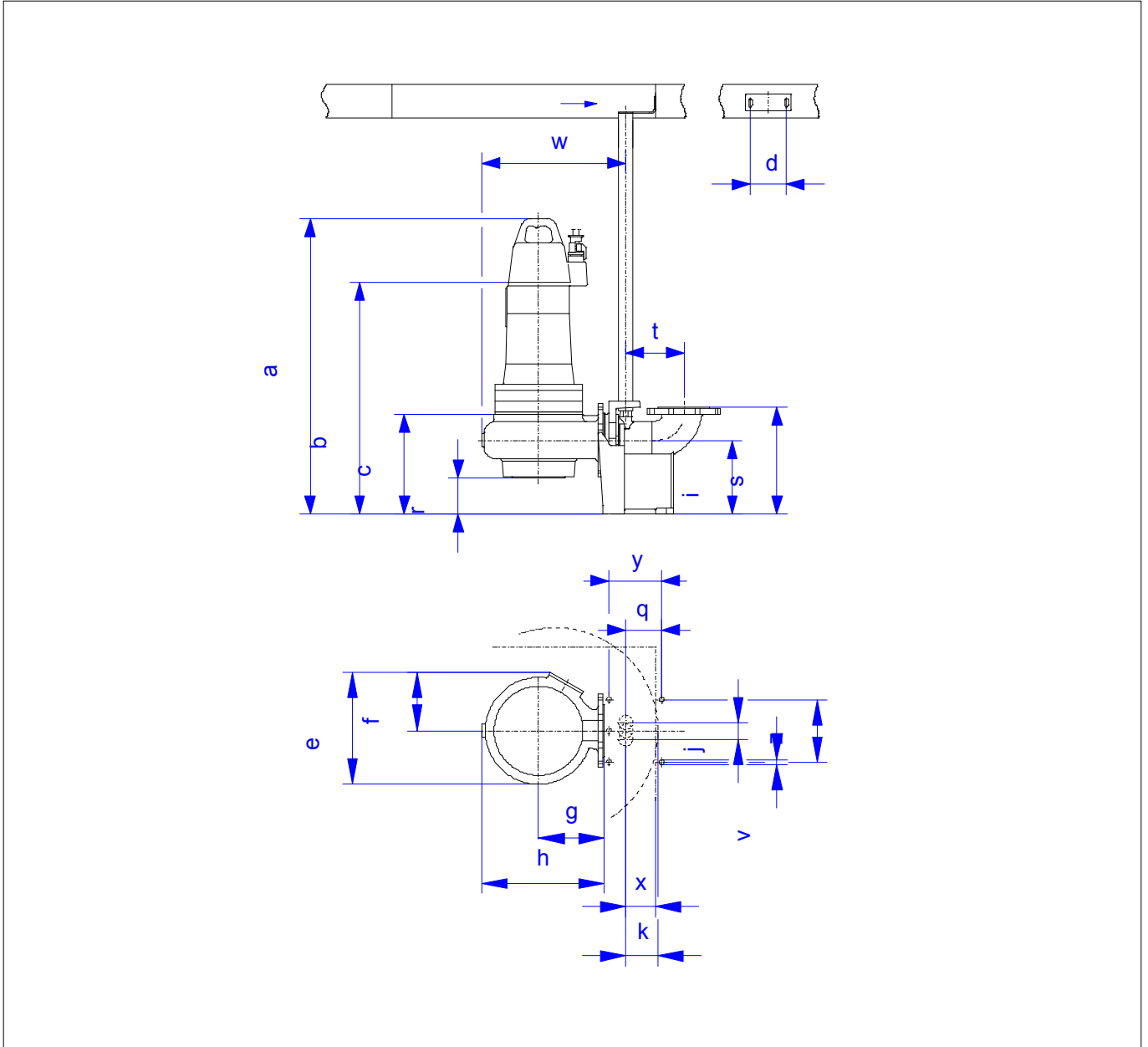
Contact  
E-mail  
Phone

## Dimensions

**FA 10.78Z**  
With motor  
**T 24-6/22K**

Project ID                      Untitled project 2025-03-30 11:34:50.544  
Project name  
Installation location  
Customer pos. No.

Date    2025-03-30



### Dimensions

Name	Value	Name	Value
a	1,286 mm	k	96 mm
b = min. water level	1,033 mm	q	149 mm
c	393 mm	r	183 mm
d	110 mm	s	465 mm
e	563 mm	t	220 mm
f	295 mm	v	18 mm
g	350 mm	w	754 mm
h	635 mm	x	90 mm
i	320 mm	y	210 mm
j	50 mm	z	240 mm

### Connections

Suction port	DN100 PN10
Discharge port	DN100 PN10
Suspension device 2	DN150L/2RK