



Contact  
E-mail  
Phone

Customer

Contact  
E-mail  
Phone

## Technical data

### FA 20.34E

With motor

### FK 34.1-6/24

Project ID                      Untitled project 2025-03-30 11:34:50.544  
Project name  
Installation location  
Customer pos. No.

Date    2025-03-30

#### Pump

Pump type	FA 20.34E
Installation type	Suspension device
	DN200/2R
Free passage	200 mm
Nominal speed	950 1/min
Rated frequency	50 Hz
Impeller type	Single-channel
Impeller construction	Closed

#### Impeller size

max. possible	355 mm
min. possible	310 mm
standard	355 mm
designed	355 mm

#### Suction port

Rated diameter	DN200
Pressure rating	PN10
Standard	EN1092-2-S

#### Discharge port

Rated diameter	DN200
Pressure rating	PN10
Standard	EN1092-2-D

#### Weights

Weight	max. 266 kg
Weight of motor	595 kg
Weight of unit	max. 861 kg

#### Materials

Pump housing	EN-GJL-250
Stationary wear ring	1.4308
Impeller	EN-GJS-500-7
Mobile wear ring	1.4462/1.4470
Suction ports	EN-GJL-250

#### Motor

Motor name	FK 34.1-6/24
Number of poles	6
Rated power	35 kW
Rated speed	970 1/min
Power input with rated power	40.7 kW
Rated voltage	400 ~3 V
Current input with rated power	71.6 A
Efficiency with rated power	86 %
cos phi with rated power	0.82
cos phi with starting	
Rated frequency	50 Hz
Operation type wet	S1
Operation type dry	S1
Starting current, direct starting	340 A
Starting current, star-delta	113.3 A
Starting torque	600 Nm
Inertia moment	0.626 kg m <sup>2</sup>
Degree of protection	IP 68
Sel. explosion protection	
Ex-designation	
Ex-number	
Motor connection cable	4x16 + 4x1,5 NSSHÖU
Max. fluid temperature	40 °C
Starts per hour max.	15

#### Duty point data

Volume flow	
Head	
Shaft power P <sub>2</sub>	
Hydr. efficiency η <sub>hyd.</sub>	
Power input P <sub>1</sub>	
Fluid	Water
Required pump NPSH	
Rotational speed	979.1 1/min
Total efficiency	$= \frac{P_2 * \text{Hydr. efficiency } \eta_{\text{hyd.}}}{P_1}$



Contact  
E-mail  
Phone

Customer

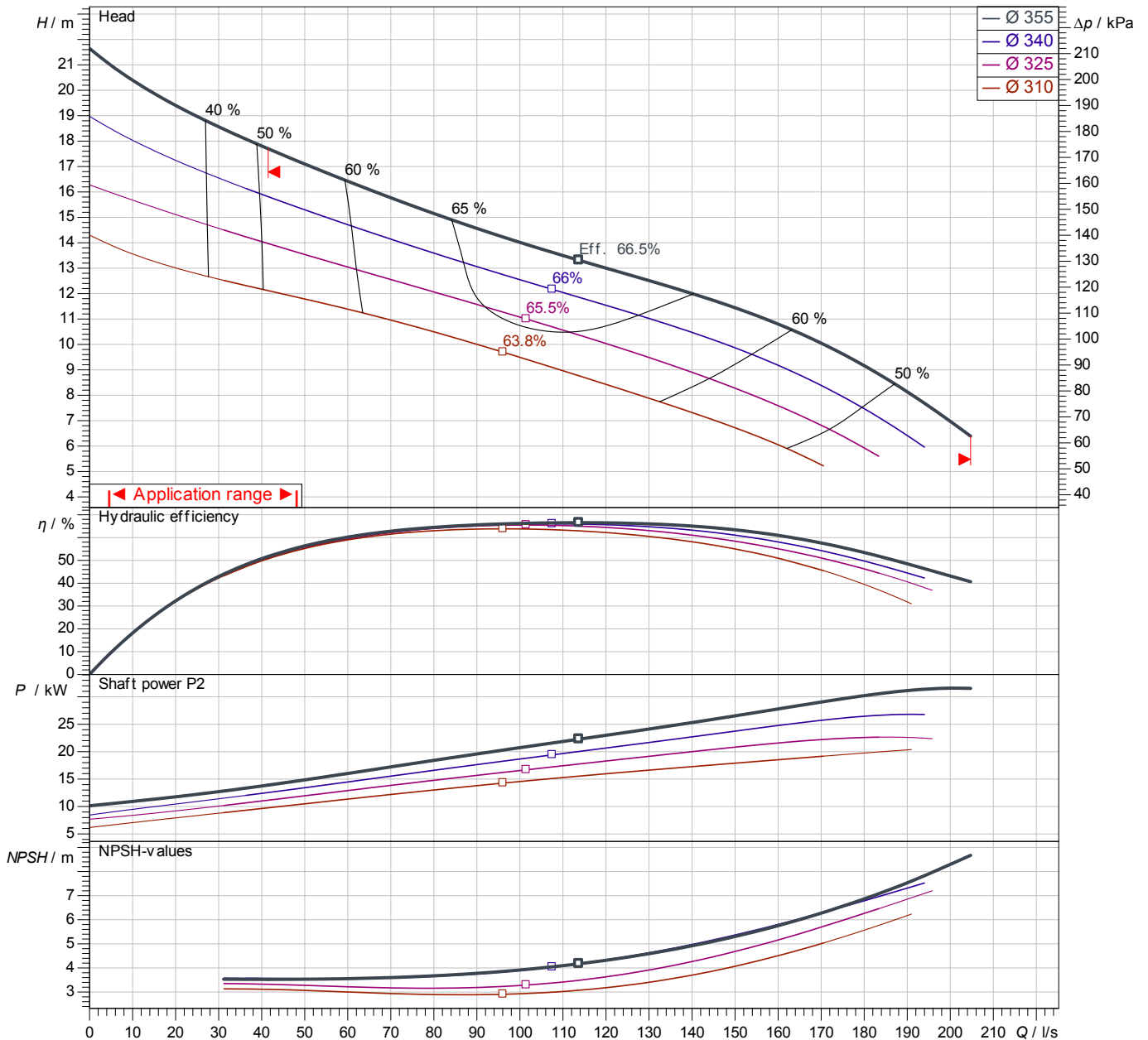
Contact  
E-mail  
Phone

# Performance curves

**FA 20.34E**  
With motor  
**FK 34.1-6/24**

Project ID: Untitled project 2025-03-30 11:34:50.544  
Project name  
Installation location  
Customer pos. No.

Date 2025-03-30



Power data referred to: Water; 20°C; 998.3kg/m<sup>3</sup>; 1.005mm<sup>2</sup>/s  
Tolerance as per ISO 9906 / Annex A.2

**Pump**

Impeller Ø	designed	355 mm
Nominal speed		970 1/min
Frequency		50 Hz
Impeller type		Single-channel

**Motor**

Rated power	35 kW
Sel. explosion protection	

**Duty point data**

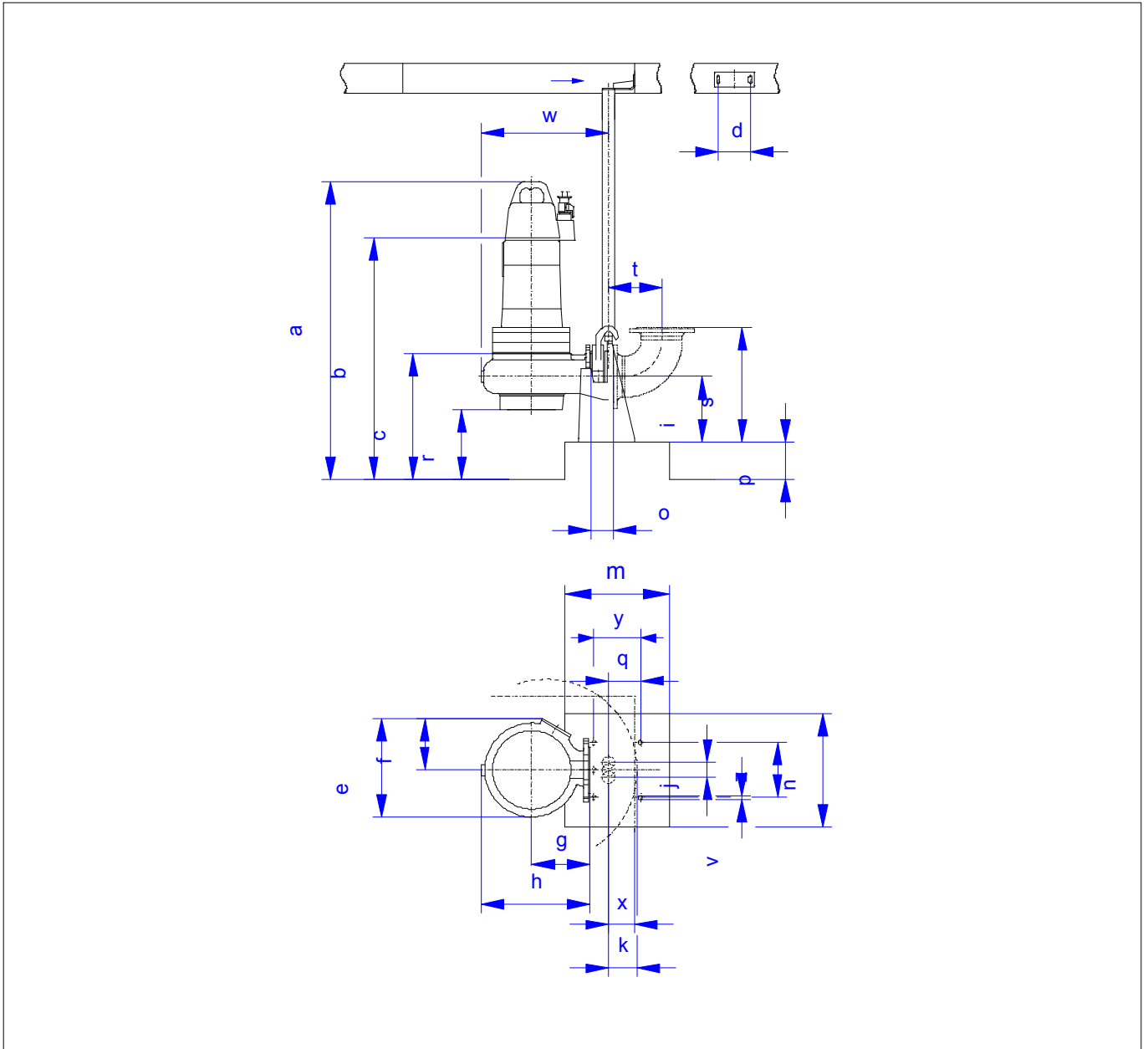
Volume flow	
Head	
Shaft power P2	
Hydr. efficiency η hyd.	
Power input P1	
Required pump NPSH	
Rotational speed	979 1/min

## Dimensions

**FA 20.34E**  
With motor  
**FK 34.1-6/24**

Project ID                      Untitled project 2025-03-30 11:34:50.544  
Project name  
Installation location  
Customer pos. No.

Date    2025-03-30



### Dimensions

Name	Value	Name	Value
a	1,829 mm	m	550 mm
b = min. water level	577 mm	n	600 mm
c	577 mm	o	117 mm
d	270 mm	p	110 mm
e	772 mm	q	115 mm
f	449 mm	r	203 mm
g	500 mm	s	560 mm
h	864 mm	t	285 mm
i	300 mm	v	25 mm
j	120 mm	w	956 mm

### Connections

Suction port	DN200 PN10
Discharge port	DN200 PN10
Suspension device	DN200/2R