



Contact  
E-mail  
Phone

Customer

Contact  
E-mail  
Phone

## Technical data

### Rexa SUPRA-C10-34

With motor

### T 20.2M-6/22GEx-E3

Project ID                      Untitled project 2025-03-30 20:51:59.472  
Project name  
Installation location  
Customer pos. No.

Date    2025-03-30

#### Pump

Pump type	Rexa SUPRA-C10-34
Installation type	Suspension device DN100S/2RK
Free passage	79 mm
Nominal speed	950
Frequency	50 Hz
Impeller type	Single vane impeller
Impeller construction	Closed

#### Impeller Ø

designed	276 mm
standard	276 mm
Max.	276 mm
Min.	230 mm

#### Discharge port

Pressure rating	PN10
Rated diameter	DN100
Standard	EN1092-2-D

#### Suction port

Pressure rating	PN10
Rated diameter	DN100
Standard	EN1092-2-S

#### Weight

Weight	max.	66.5 kg
Weight of motor		185 kg
Weight of unit	max.	251.5 kg

#### Materials

Pump housing	EN-GJS-500-7
Stationary wear ring	1.4308
Impeller	EN-GJS-500-7
Mobile wear ring	1.4462/1.4470
Suction ports	EN-GJL-250

#### Motor

Motor name	T 20.2M-6/22GEx-E3
Number of poles	6
Rated power	5.5 kW
Rated speed	960 1/min
Power input with rated power	6.6 kW
Rated voltage	400 ~3 V
Current input with rated power	11.6 A
Efficiency with rated power	83.7 %
cos phi with rated power	0.82
cos phi with starting	
Rated frequency	50 Hz
Operation type wet	S1
Operation type dry	S2-15 min
Starting current, direct starting	106 A
Starting current, star-delta	35.3 A
Starting torque	175 Nm
Inertia moment	0.0518 kg m <sup>2</sup>
Degree of protection	IP 68
Sel. explosion protection	FM
Ex-designation	
Ex-number	
Motor connection cable	4x1,5 + 7x1,5 NSSHÖU
Max. fluid temperature	40 °C
Starts per hour max.	15

#### Duty point data

Volume flow	
Head	
Shaft power P <sub>2</sub>	
Hydr. efficiency η <sub>hyd.</sub>	
Power input P <sub>1</sub>	
Fluid	Water
Required pump NPSH	
Rotational speed	971.7 1/min
Max. flow	53 l/s
Head H(Q <sub>max</sub> )	6.1 m
Shut off head	13.5 m
Best efficiency point Q(BEP)	41.8 l/s
Best efficiency point H(BEP)	7.7 m
Total efficiency	= $\frac{P_2 * \text{Hydr. efficiency } \eta_{\text{hyd.}}}{P}$

ArtNr



Contact  
E-mail  
Phone

Customer

Contact  
E-mail  
Phone

## Technical data

**Rexa SUPRA-C10-34**

With motor

**T 20.2M-6/22GEx-E3**

Project ID                      Untitled project 2025-03-30 20:51:59.472

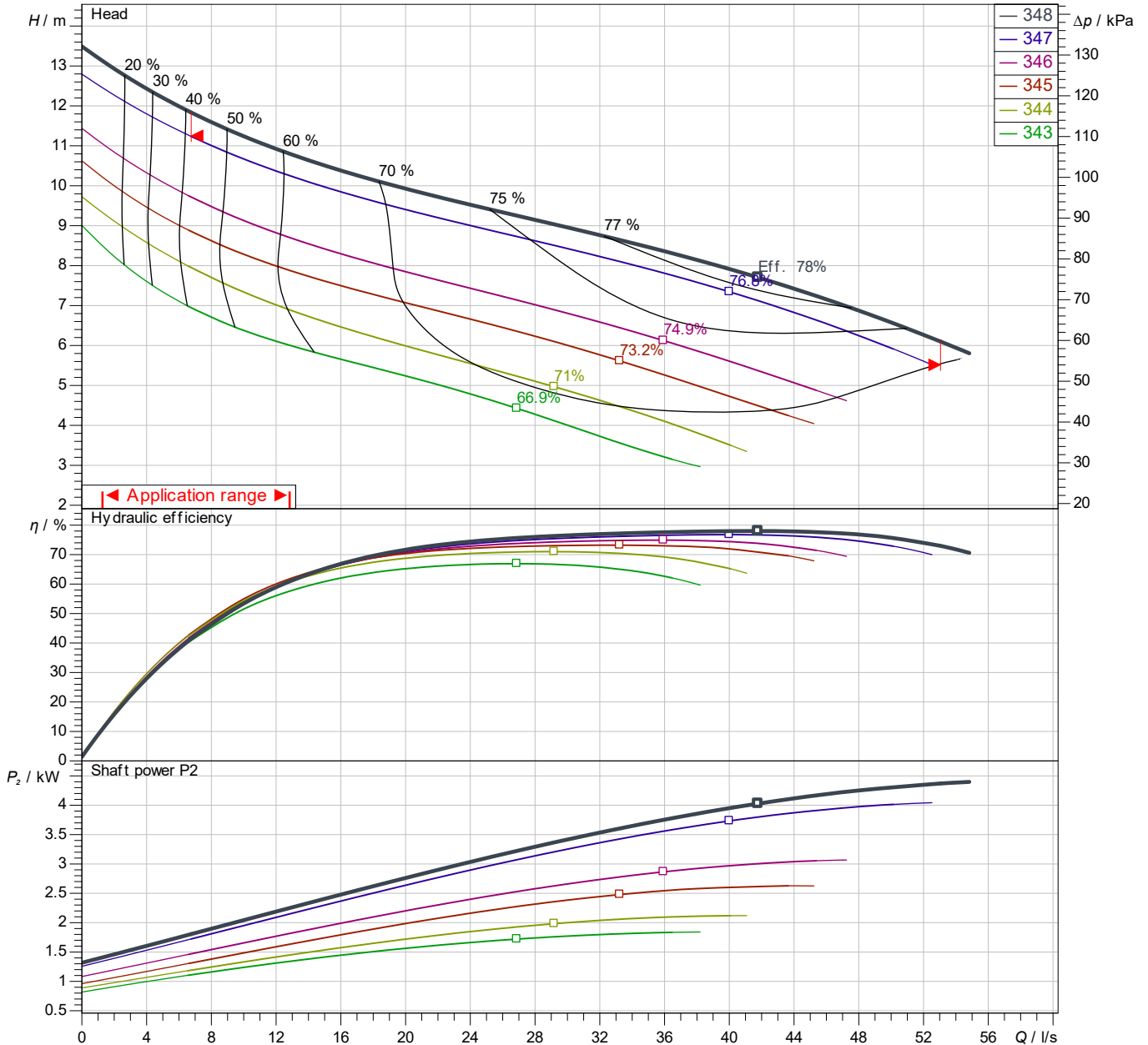
Project name

Installation location

Date    2025-03-30

### Tender text

---



Power data referred to:                      Water; 20°C; 998.3kg/m<sup>3</sup>; 1.005mm<sup>2</sup>/s  
Tolerance as per ISO 9906 / Annex A.2

**Pump**

Impeller Ø	designed	276 mm
Nominal speed		960 1/min
Frequency		50 Hz
Impeller type		Single vane impeller

**Motor**

Rated power	5.5 kW
Sel. explosion protection	FM

**Duty point data**

Volume flow	
Head	
Shaft power P <sub>2</sub>	
Hydr. efficiency η <sub>hyd</sub> .	
Power input P <sub>1</sub>	
Required pump NPSH	
Rotational speed	972 1/min

## Dimensions

### Rexa SUPRA-C10-34

With motor

### T 20.2M-6/22GEx-E3

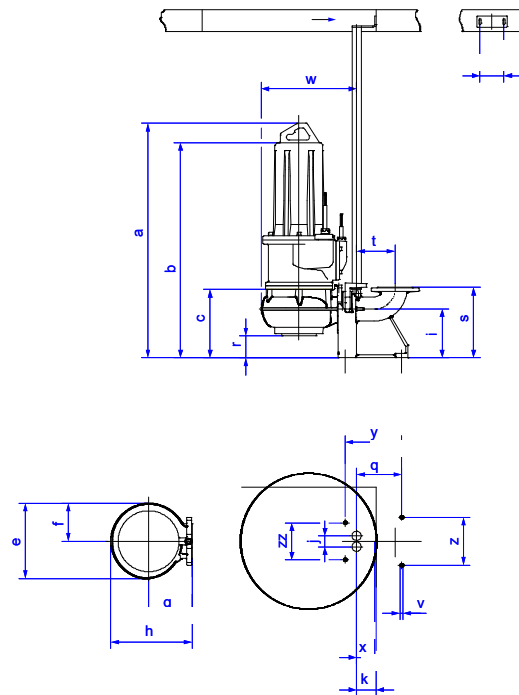
Project ID                      Untitled project 2025-03-30 20:51:59.472

Project name

Installation location

Customer pos. No.

Date    2025-03-30



#### Dimensions

Name	Value	Name	Value
a	1,156 mm	k	98 mm
b = min. water level	1,066 mm	q	206 mm
c	326 mm	r	95 mm
d	110 mm	s	325 mm
e	418 mm	t	176 mm
f	237 mm	v	13.5 mm
g	245 mm	w	507 mm
h	442 mm	x	90 mm
i	225 mm	y	260 mm
j	50 mm	z	220 mm

#### Connections

Suction port	DN100 PN10
Discharge port	DN100 PN10
Suspension device	DN100S/2RK