



Contact
E-mail
Phone

Customer

Contact
E-mail
Phone

Technical data

FA 08.64E

With motor

FK 202-4/17

Project ID Untitled project 2025-03-30 11:34:50.544

Project name

Installation location

Customer pos. No.

Date 2025-03-30

Pump

Pump type	FA 08.64E
Installation type	Suspension device 1
	DN80/2RK
Free passage	80 mm
Nominal speed	1,450 1/min
Rated frequency	50 Hz
Impeller type	Single-channel
Impeller construction	Closed

Impeller size

max. possible	278 mm
min. possible	234 mm
standard	278 mm
designed	278 mm

Suction port

Rated diameter	DN100
Pressure rating	PN10
Standard	EN1092-2-S

Discharge port

Rated diameter	DN80
Pressure rating	PN10
Standard	EN1092-2-D

Weights

Weight	max. 47 kg
Weight of motor	119 kg
Weight of unit	max. 166 kg

Materials

Pump housing	EN-GJL-250
Stationary wear ring	1.4308
Impeller	EN-GJL-250
Mobile wear ring	1.4462/1.4470

Motor

Motor name	FK 202-4/17
Number of poles	4
Rated power	11.5 kW
Rated speed	1415 1/min
Power input with rated power	14.6 kW
Rated voltage	400 ~3 V
Current input with rated power	24.2 A
Efficiency with rated power	79 %
cos phi with rated power	0.87
cos phi with starting	
Rated frequency	50 Hz
Operation type wet	S1
Operation type dry	S1
Starting current, direct starting	98 A
Starting current, star-delta	32.7 A
Starting torque	125 Nm
Inertia moment	0.0344 kg m ²
Degree of protection	IP 68
Sel. explosion protection	
Ex-designation	
Ex-number	
Motor connection cable	4x4 + 2x1,5 NSSHÖU
Max. fluid temperature	60 °C
Starts per hour max.	15

Duty point data

Volume flow	
Head	
Shaft power P ₂	
Hydr. efficiency η _{hyd.}	
Power input P ₁	
Fluid	Water
Required pump NPSH	
Rotational speed	1,442 1/min
Total efficiency	$= \frac{P_2 * \text{Hydr. efficiency } \eta_{\text{hyd.}}}{P_1}$



Contact
E-mail
Phone

Customer

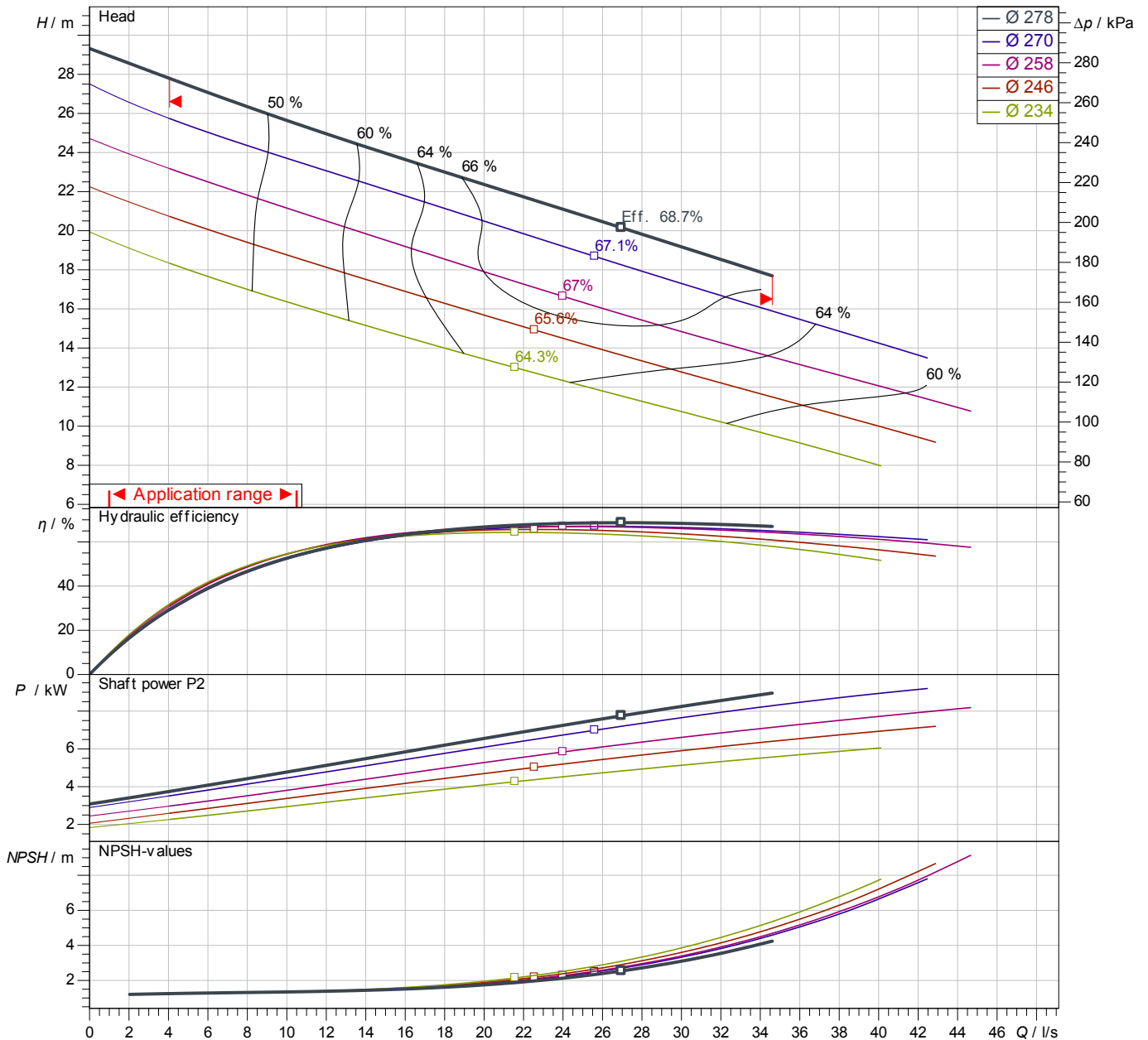
Contact
E-mail
Phone

Performance curves

FA 08.64E
With motor
FK 202-4/17

Project ID: Untitled project 2025-03-30 11:34:50.544
Project name
Installation location
Customer pos. No.

Date 2025-03-30



Power data referred to: Water; 20°C; 998.3kg/m³; 1.005mm²/s
Tolerance as per ISO 9906 / Annex A.2

Pump

Impeller Ø	designed	278 mm
Nominal speed		1,415 1/min
Frequency		50 Hz
Impeller type		Single-channel

Motor

Rated power	11.5 kW
Sel. explosion protection	

Duty point data

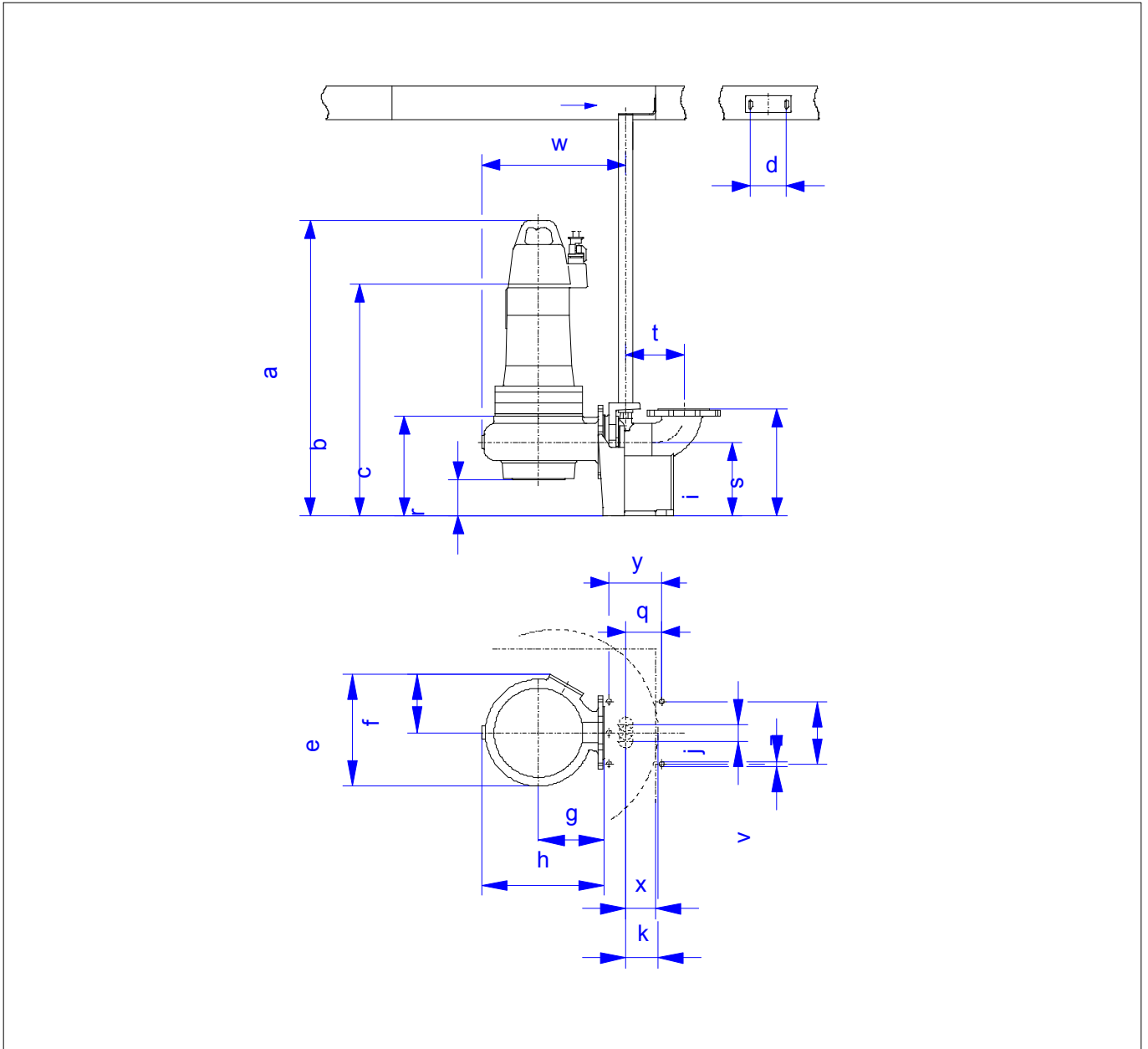
Volume flow	
Head	
Shaft power P2	
Hydr. efficiency η hyd.	
Power input P1	
Required pump NPSH	
Rotational speed	1442 1/min

Dimensions

FA 08.64E
With motor
FK 202-4/17

Project ID Untitled project 2025-03-30 11:34:50.544
Project name
Installation location
Customer pos. No.

Date 2025-03-30



Dimensions

Name	Value	Name	Value
a	1,057 mm	k	98 mm
b = min. water level	286 mm	q	69 mm
c	286 mm	r	110 mm
d	110 mm	s	300 mm
e	407 mm	t	166 mm
f	211 mm	v	15 mm
g	245 mm	w	504 mm
h	445 mm	x	90 mm
i	210 mm	y	120 mm
j	50 mm	z	170 mm

Connections

Suction port	DN100 PN10
Discharge port	DN80 PN10
Suspension device 1	DN80/2RK