



Contact  
E-mail  
Phone

Customer

Contact  
E-mail  
Phone

## Technical data

### FA 25.32D

With motor

### FK 202-6/22

Project ID Untitled project 2025-03-30 11:34:50.544

Project name

Installation location

Customer pos. No.

Date 2025-03-30

#### Pump

Pump type	FA 25.32D
Installation type	Suspension device DN250/2R
Free passage	80 mm
Nominal speed	950 1/min
Rated frequency	50 Hz
Impeller type	Three-channel
Impeller construction	Closed

#### Impeller size

max. possible	278 mm
min. possible	228 mm
standard	278 mm
designed	278 mm

#### Suction port

Rated diameter	DN200
Pressure rating	PN10
Standard	EN1092-2-S

#### Discharge port

Rated diameter	DN250
Pressure rating	PN10
Standard	EN1092-2-D

#### Weights

Weight	max. 120 kg
Weight of motor	138 kg
Weight of unit	max. 258 kg

#### Materials

Pump housing	EN-GJL-250
Stationary wear ring	1.4308
Impeller	EN-GJL-250
Mobile wear ring	1.4462/1.4470

#### Motor

Motor name	FK 202-6/22
Number of poles	6
Rated power	9 kW
Rated speed	947 1/min
Power input with rated power	11.1 kW
Rated voltage	400 ~3 V
Current input with rated power	19.2 A
Efficiency with rated power	81.4 %
cos phi with rated power	0.83
cos phi with starting	
Rated frequency	50 Hz
Operation type wet	S1
Operation type dry	S1
Starting current, direct starting	82 A
Starting current, star-delta	27.3 A
Starting torque	175 Nm
Inertia moment	0.0587 kg m <sup>2</sup>
Degree of protection	IP 68
Sel. explosion protection	
Ex-designation	
Ex-number	
Motor connection cable	7x2,5 NSSHÖU
Max. fluid temperature	55 °C
Starts per hour max.	15

#### Duty point data

Volume flow	
Head	
Shaft power P <sub>2</sub>	
Hydr. efficiency η <sub>hyd.</sub>	
Power input P <sub>1</sub>	
Fluid	Water
Required pump NPSH	
Rotational speed	962.4 1/min
Total efficiency	$= \frac{P_2 * \text{Hydr. efficiency } \eta_{\text{hyd.}}}{P_1}$



Contact  
E-mail  
Phone

Customer

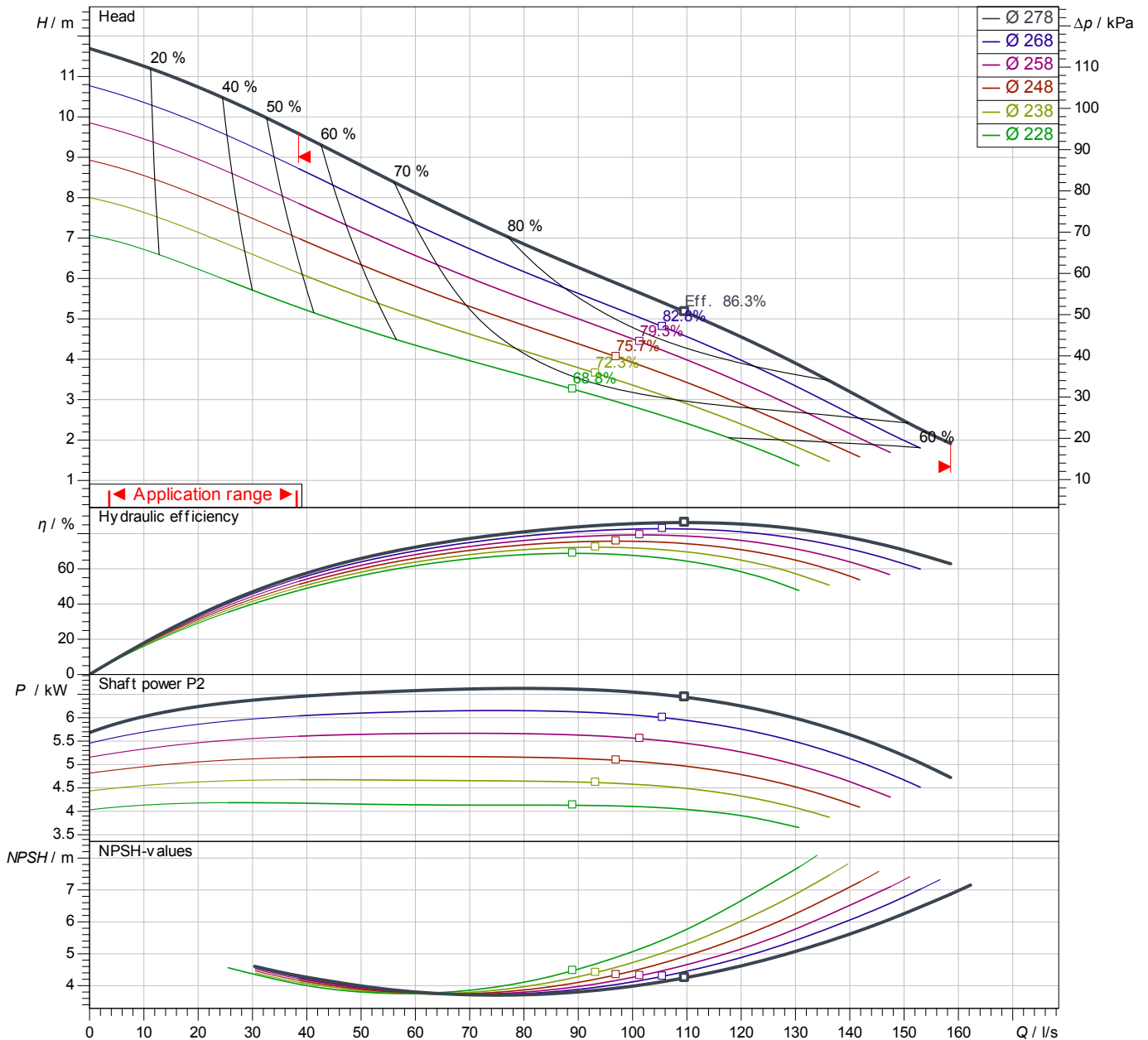
Contact  
E-mail  
Phone

# Performance curves

**FA 25.32D**  
With motor  
**FK 202-6/22**

Project ID: Untitled project 2025-03-30 11:34:50.544  
Project name  
Installation location  
Customer pos. No.

Date 2025-03-30



Power data referred to: Water; 20°C; 998.3kg/m<sup>3</sup>; 1.005mm<sup>2</sup>/s  
Tolerance as per ISO 9906 / Annex A.2

**Pump**

Impeller Ø designed 278 mm  
Nominal speed 947 1/min  
Frequency 50 Hz  
Impeller type Three-channel

**Motor**

Rated power 9 kW  
Sel. explosion protection

**Duty point data**

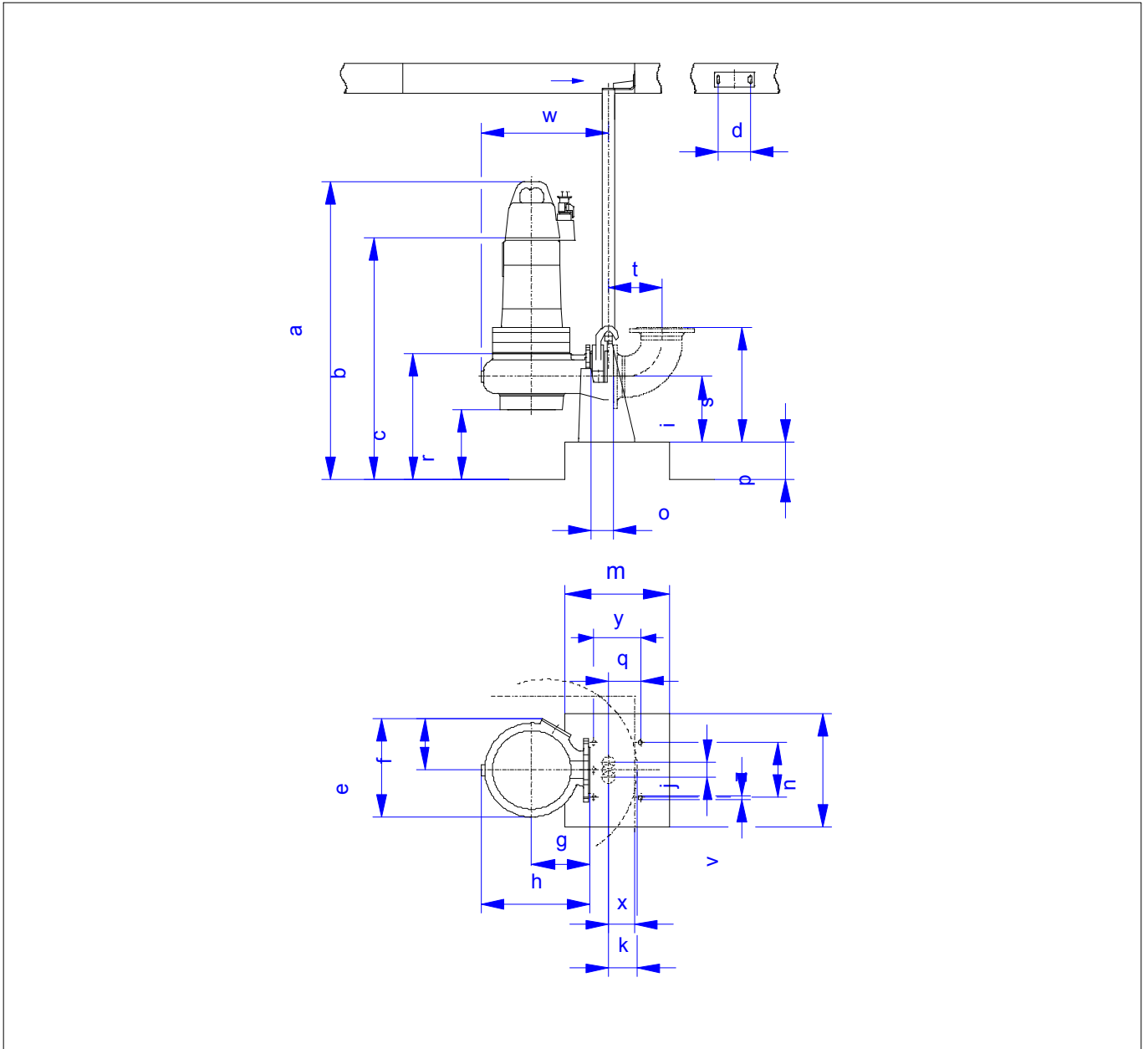
Volume flow  
Head  
Shaft power P2  
Hydr. efficiency η hyd.  
Power input P1  
Required pump NPSH  
Rotational speed 962 1/min

## Dimensions

**FA 25.32D**  
With motor  
**FK 202-6/22**

Project ID                      Untitled project 2025-03-30 11:34:50.544  
Project name  
Installation location  
Customer pos. No.

Date    2025-03-30



### Dimensions

Name	Value	Name	Value
a	1,306 mm	m	600 mm
b = min. water level	485 mm	n	650 mm
c	485 mm	o	127 mm
d	120 mm	p	140 mm
e	655 mm	q	135 mm
f	400 mm	r	250 mm
g	400 mm	s	600 mm
h	713 mm	t	378 mm
i	250 mm	v	25 mm
j	120 mm	w	812 mm

### Connections

Suction port	DN200 PN10
Discharge port	DN250 PN10
Suspension device	DN250/2R