



Contact
E-mail
Phone

Customer

Contact
E-mail
Phone

Technical data

FA 15.21W

With motor

FK 202-6/22

Project ID Untitled project 2025-03-30 11:34:50.544

Project name

Installation location

Customer pos. No.

Date 2025-03-30

Pump

Pump type	FA 15.21W
Installation type	Suspension device
	DN150L/2RK
Free passage	90 mm
Nominal speed	950 1/min
Rated frequency	50 Hz
Impeller type	Vortex impeller
Impeller construction	Open

Impeller size

max. possible	242 mm
min. possible	160 mm
standard	242 mm
designed	242 mm

Suction port

Rated diameter	DN150
Pressure rating	PN10
Standard	EN1092-2-S

Discharge port

Rated diameter	DN150
Pressure rating	PN10
Standard	EN1092-2-D

Weights

Weight	max. 71 kg
Weight of motor	138 kg
Weight of unit	max. 209 kg

Materials

Pump housing	EN-GJL-250
Impeller	EN-GJS-500-7

Motor

Motor name	FK 202-6/22
Number of poles	6
Rated power	9 kW
Rated speed	947 1/min
Power input with rated power	11.1 kW
Rated voltage	400 ~3 V
Current input with rated power	19.2 A
Efficiency with rated power	81.4 %
cos phi with rated power	0.83
cos phi with starting	
Rated frequency	50 Hz
Operation type wet	S1
Operation type dry	S1
Starting current, direct starting	82 A
Starting current, star-delta	27.3 A
Starting torque	175 Nm
Inertia moment	0.0587 kg m ²
Degree of protection	IP 68
Sel. explosion protection	
Ex-designation	
Ex-number	
Motor connection cable	7x2,5 NSSHÖU
Max. fluid temperature	55 °C
Starts per hour max.	15

Duty point data

Volume flow	
Head	
Shaft power P ₂	
Hydr. efficiency η _{hyd.}	
Power input P ₁	
Fluid	Water
Required pump NPSH	
Rotational speed	954.5 1/min
Total efficiency	$= \frac{P_2 * \text{Hydr. efficiency } \eta_{\text{hyd.}}}{P_1}$



Contact
E-mail
Phone

Customer

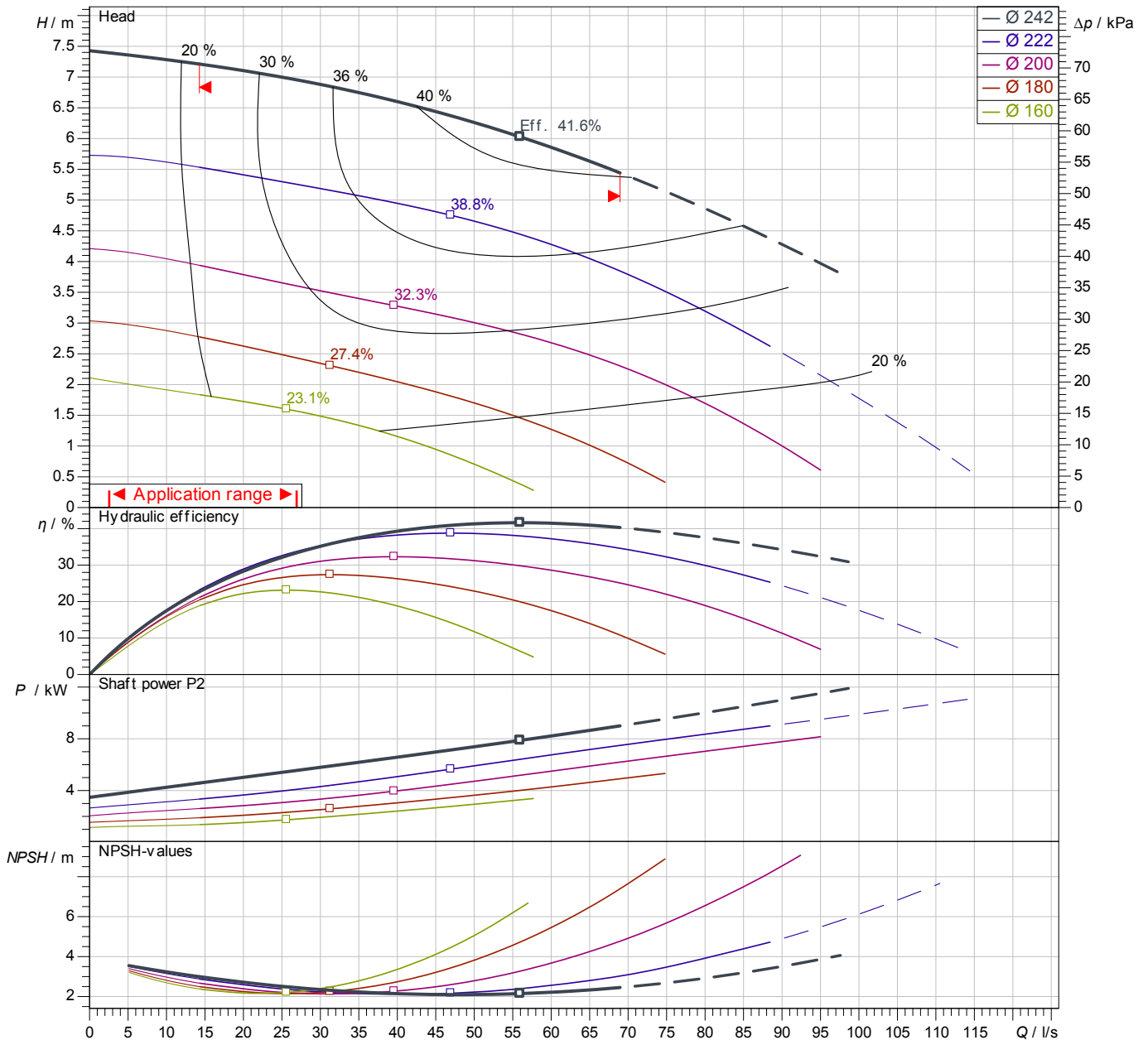
Contact
E-mail
Phone

Performance curves

FA 15.21W
With motor
FK 202-6/22

Project ID: Untitled project 2025-03-30 11:34:50.544
Project name
Installation location
Customer pos. No.

Date 2025-03-30



Power data referred to: Water; 20°C; 998.3kg/m³; 1.005mm²/s
Tolerance as per ISO 9906 / Annex A.2

Pump

Impeller Ø	designed	242 mm
Nominal speed		947 1/min
Frequency		50 Hz
Impeller type		Vortex impeller

Motor

Rated power	9 kW
Sel. explosion protection	

Duty point data

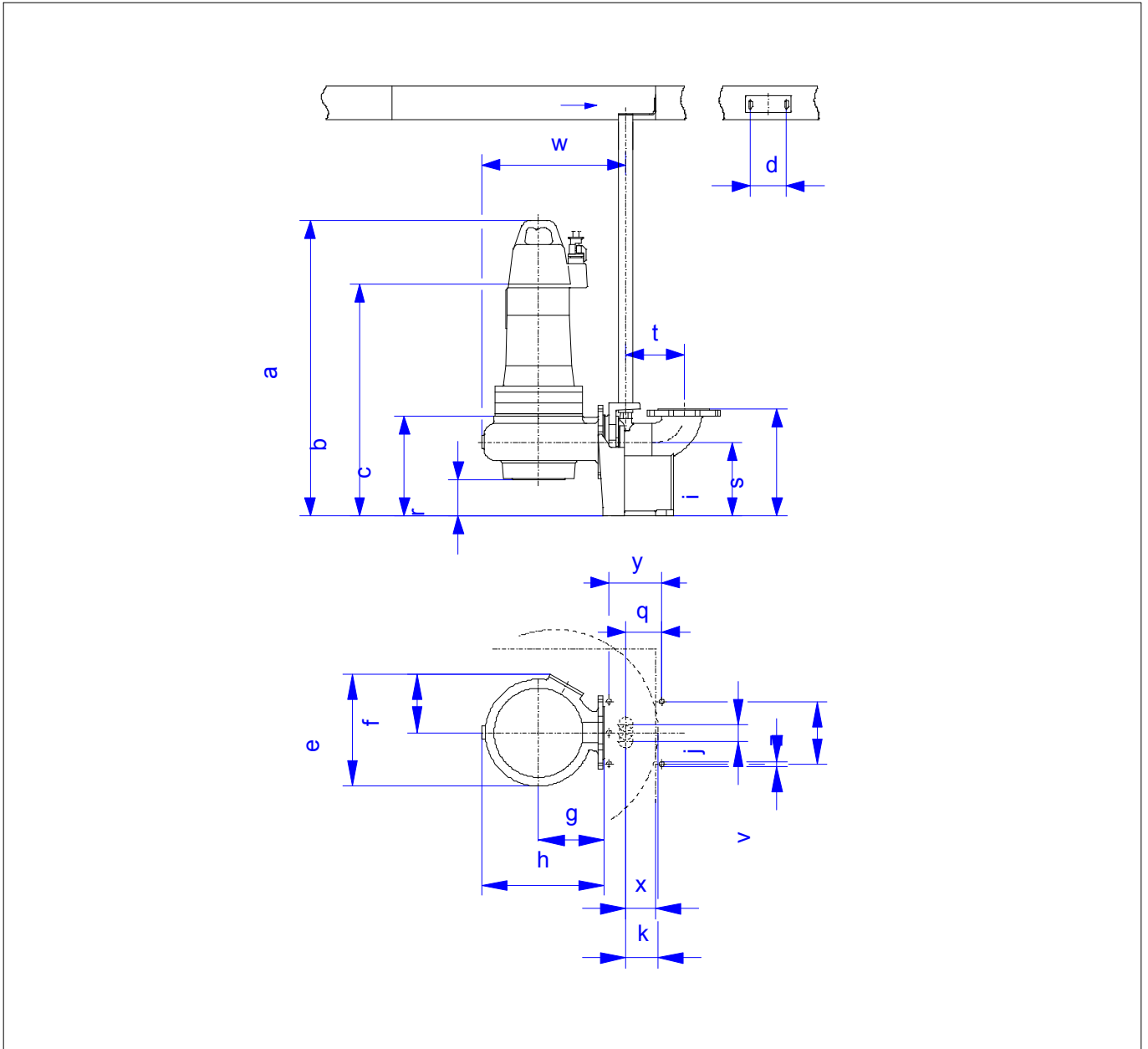
Volume flow	
Head	
Shaft power P2	
Hydr. efficiency η hyd.	
Power input P1	
Required pump NPSH	
Rotational speed	955 1/min

Dimensions

FA 15.21W
With motor
FK 202-6/22

Project ID Untitled project 2025-03-30 11:34:50.544
Project name
Installation location
Customer pos. No.

Date 2025-03-30



Dimensions

Name	Value	Name	Value
a	1,228 mm	k	95 mm
b = min. water level	407 mm	q	149 mm
c	407 mm	r	199 mm
d	110 mm	s	465 mm
e	508 mm	t	220 mm
f	301 mm	v	19 mm
g	350 mm	w	681 mm
h	596 mm	x	90 mm
i	320 mm	y	210 mm
j	50 mm	z	240 mm

Connections

Suction port	DN150 PN10
Discharge port	DN150 PN10
Suspension device	DN150L/2RK