



Contact  
E-mail  
Phone

Customer

Contact  
E-mail  
Phone

## Technical data

### Rexa SUPRA-V08-97

With motor  
**T 20.1-2/30K**

Project ID                      Untitled project 2025-03-30 20:51:59.472

Project name

Installation location

Customer pos. No.

Date    2025-03-30

#### Pump

Pump type	Rexa SUPRA-V08-97
Installation type	Suspension device 1 DN80/2RK
Free passage	80 mm
Nominal speed	2900
Frequency	50 Hz
Impeller type	Vortex impeller
Impeller construction	Open

#### Impeller Ø

designed	205 mm
standard	205 mm
Max.	205 mm
Min.	155 mm

#### Discharge port

Pressure rating	PN10
Rated diameter	DN80
Standard	EN1092-2-D

#### Suction port

Pressure rating	PN10
Rated diameter	DN80
Standard	EN1092-2-S

#### Weight

Weight	max.	33 kg
Weight of motor		182 kg
Weight of unit	max.	215 kg

#### Materials

Pump housing	EN-GJL-250
Impeller	EN-GJL-250

#### Motor

Motor name	T 20.1-2/30K
Number of poles	2
Rated power	23 kW
Rated speed	2900 1/min
Power input with rated power	27.5 kW
Rated voltage	400 ~3 V
Current input with rated power	45.2 A
Efficiency with rated power	83.5 %
cos phi with rated power	0.88
cos phi with starting	
Rated frequency	50 Hz
Operation type wet	S1
Operation type dry	S2-15 min
Starting current, direct starting	325 A
Starting current, star-delta	108.3 A
Starting torque	120 Nm
Inertia moment	0.026 kg m <sup>2</sup>
Degree of protection	IP 68
Sel. explosion protection	
Ex-designation	
Ex-number	
Motor connection cable	4x6 + 7x1,5 NSSHÖU
Max. fluid temperature	40 °C
Starts per hour max.	15

#### Duty point data

Volume flow	
Head	
Shaft power P <sub>2</sub>	
Hydr. efficiency η <sub>hyd.</sub>	
Power input P <sub>1</sub>	
Fluid	Water
Required pump NPSH	
Rotational speed	2,905 1/min
Max. flow	29 l/s
Head H(Q <sub>max</sub> )	38.2 m
Shut off head	58.8 m
Best efficiency point Q (BEP)	29 l/s
Best efficiency point H (BEP)	38.2 m
Total efficiency	= $\frac{P_2 * \text{Hydr. efficiency } \eta_{\text{hyd.}}}{P}$

ArtNr



Contact  
E-mail  
Phone

Customer

Contact  
E-mail  
Phone

## Technical data

**Rexa SUPRA-V08-97**

With motor

**T 20.1-2/30K**

Project ID                      Untitled project 2025-03-30 20:51:59.472

Project name

Installation location

Date    2025-03-30

### **Tender text**

Submersible sewage pump as floodable, single-stage block unit in stationary, vertical installation for pumping of untreated sewage, which attacks the pumps neither chemically nor mechanically. Pump with radially arranged discharge piece and axial pump intake. Service-friendly unit structure by separated motor and pump housing unit. The duty values must be guaranteed according to ISO 9906, class 2B.

Submersible motor in pressure-resistant design, with double mechanical shaft seal in EMU block design, as well as separate sealing chamber filled with medical white oil and additional leakage chamber with float control. Motor chamber dry. Sealing of the motor at the shaft by a double, wear-resistant mechanical shaft seal independent of the direction of rotation entirely made of silicon-carbide as closed unit in sealing cartridge of stainless steel and additional shaft sealing ring. Both seals in the sealing cartridge are cooled and lubricated by medical white oil or water/glycol on customer's request. The motor chamber is equipped with connecting terminals. Protection of the motor winding by thermistors installed. Both closed ball bearings are maintenance-free and filled with high-quality grease. All casing parts are of cast iron, shaft and connecting elements are of stainless steel. The motor is suitable for intermittent operation (S2) under full load in emerged condition.



Contact  
E-mail  
Phone

Customer

Contact  
E-mail  
Phone

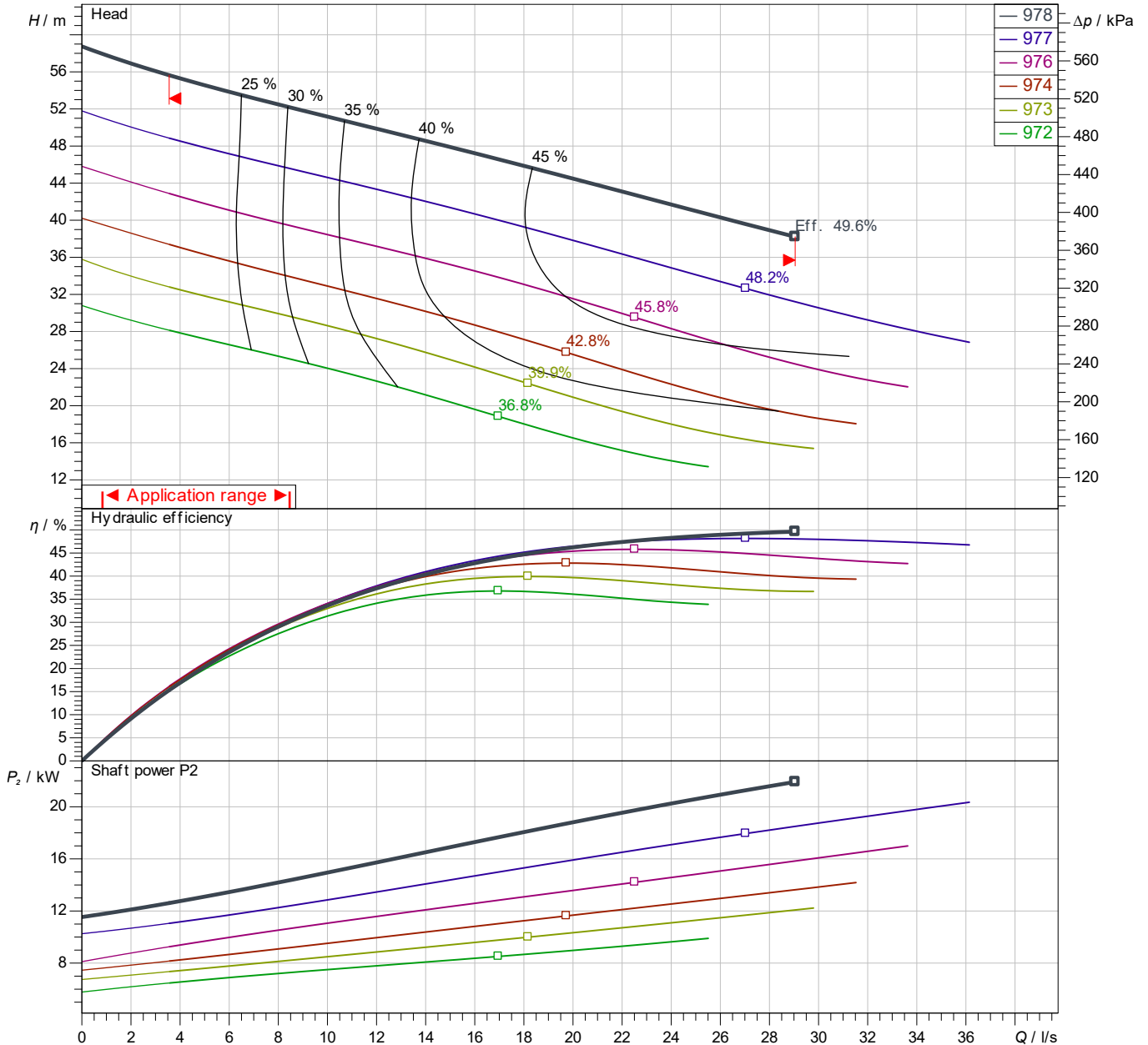
# Performance curves

## Rexa SUPRA-V08-97

With motor  
**T 20.1-2/30K**

Project ID                      Untitled project 2025-03-30 20:51:59.472  
Project name  
Installation location  
Customer pos. No.

Date    2025-03-30



Power data referred to:                      Water; 20°C; 998.3kg/m<sup>3</sup>; 1.005mm<sup>2</sup>/s  
Tolerance as per ISO 9906 / Annex A.2

### Pump

Impeller Ø	designed	205 mm
Nominal speed		2,900 1/min
Frequency		50 Hz
Impeller type		Vortex impeller

### Motor

Rated power	23 kW
Sel. explosion protection	

### Duty point data

Volume flow	
Head	
Shaft power P <sub>2</sub>	
Hydr. efficiency η <sub>hyd</sub>	
Power input P <sub>1</sub>	
Required pump NPSH	
Rotational speed	2905 1/min

Contact  
E-mail  
Phone

Customer

Contact  
E-mail  
Phone

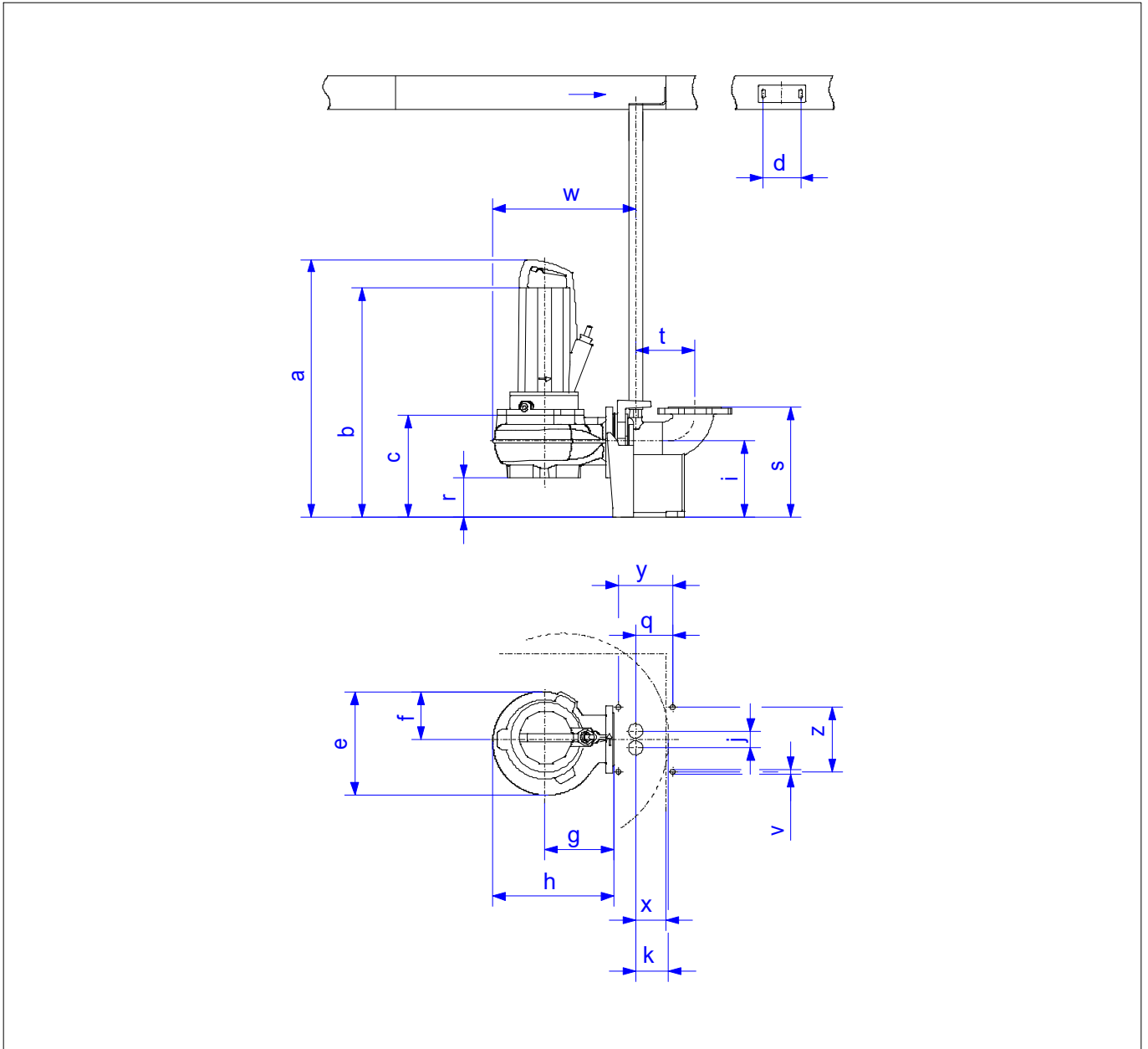
## Dimensions

### Rexa SUPRA-V08-97

With motor  
**T 20.1-2/30K**

Project ID                      Untitled project 2025-03-30 20:51:59.472  
Project name  
Installation location  
Customer pos. No.

Date    2025-03-30



#### Dimensions

Name	Value	Name	Value
a	1,045 mm	k	98 mm
b = min. water level	955 mm	q	69 mm
c	281 mm	r	113 mm
d	110 mm	s	300 mm
e	340 mm	t	166 mm
f	170 mm	v	15 mm
g	220 mm	w	439 mm
h	374 mm	x	90 mm
i	210 mm	y	120 mm
j	50 mm	z	170 mm

#### Connections

Suction port	DN80 PN10
Discharge port	DN80 PN10
Suspension device 1	DN80/2RK