



Contact
E-mail
Phone

Customer

Contact
E-mail
Phone

Technical data

FA 25.93D

With motor

FK 34.1-6/50

Project ID Untitled project 2025-03-30 11:34:50.544
Project name
Installation location
Customer pos. No.

Date 2025-03-30

Pump

Pump type	FA 25.93D
Installation type	Suspension device DN250/2R
Free passage	80 mm
Nominal speed	1,050 1/min
Rated frequency	50 Hz
Impeller type	Three-channel
Impeller construction	Closed

Impeller size

max. possible	451 mm
min. possible	336 mm
standard	451 mm
designed	451 mm

Suction port

Rated diameter	DN300
Pressure rating	PN10
Standard	EN1092-2-S

Discharge port

Rated diameter	DN250
Pressure rating	PN10
Standard	EN1092-2-D

Weights

Weight	max. 350 kg
Weight of motor	780 kg
Weight of unit	max. 1130 kg

Materials

Pump housing	EN-GJL-250
Stationary wear ring	1.4308
Impeller	EN-GJS-500-7
Mobile wear ring	1.4308
Suction ports	EN-GJL-250

Motor

Motor name	FK 34.1-6/50
Number of poles	6
Rated power	75 kW
Rated speed	975 1/min
Power input with rated power	85.2 kW
Rated voltage	400 ~3 V
Current input with rated power	150 A
Efficiency with rated power	88 %
cos phi with rated power	0.82
cos phi with starting	
Rated frequency	50 Hz
Operation type wet	S1
Operation type dry	S1
Starting current, direct starting	720 A
Starting current, star-delta	240 A
Starting torque	1200 Nm
Inertia moment	1.316 kg m ²
Degree of protection	IP 68
Sel. explosion protection	
Ex-designation	
Ex-number	
Motor connection cable	2X 4x16 + 4x1,5 NSSHÖU
Max. fluid temperature	40 °C
Starts per hour max.	15

Duty point data

Volume flow	
Head	
Shaft power P ₂	
Hydr. efficiency η _{hyd.}	
Power input P ₁	
Fluid	Water
Required pump NPSH	
Rotational speed	977.6 1/min
Total efficiency	$= \frac{P_2 * \text{Hydr. efficiency } \eta_{\text{hyd.}}}{P_1}$



Contact
E-mail
Phone

Customer

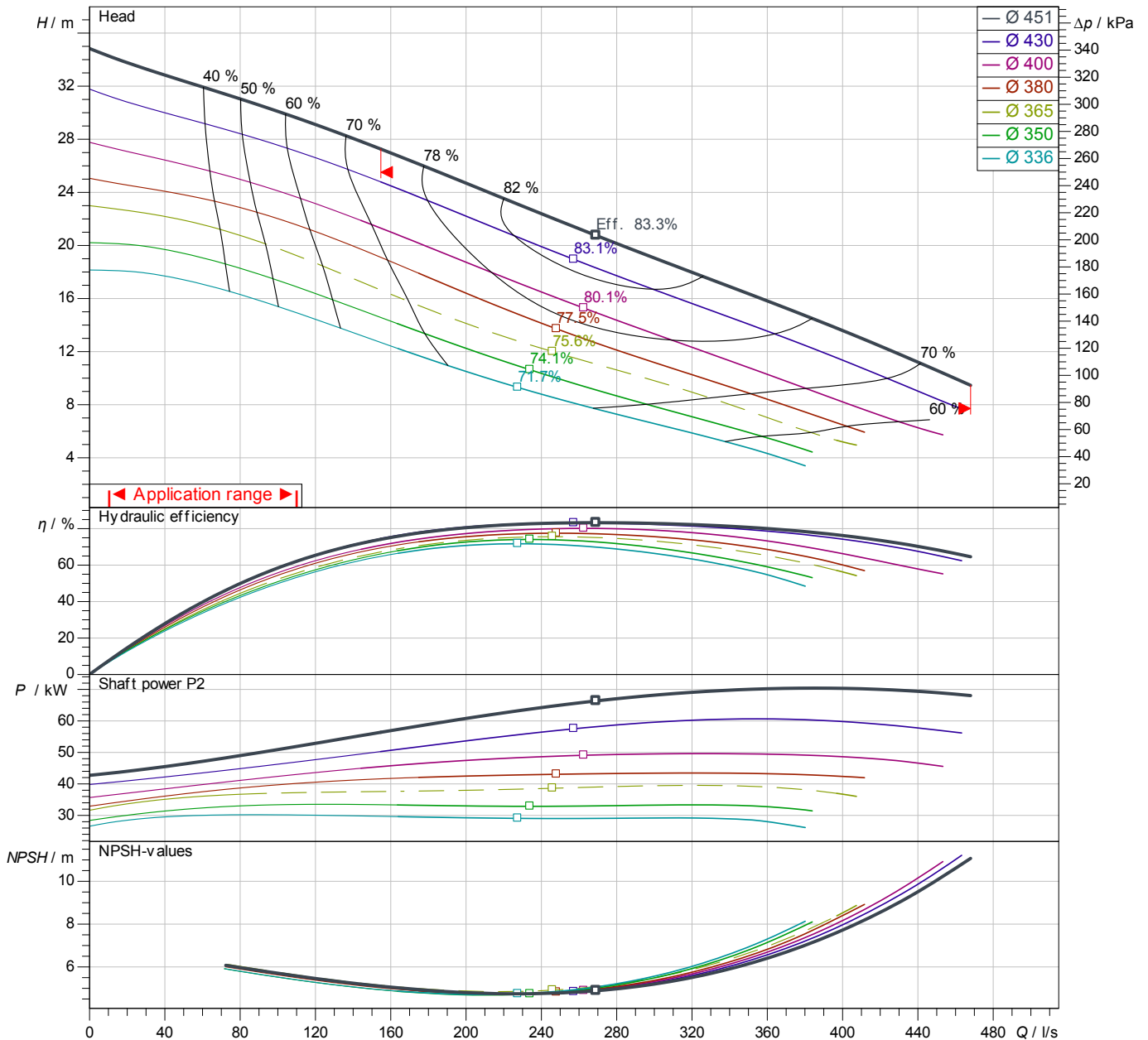
Contact
E-mail
Phone

Performance curves

FA 25.93D
With motor
FK 34.1-6/50

Project ID: Untitled project 2025-03-30 11:34:50.544
Project name
Installation location
Customer pos. No.

Date 2025-03-30



Power data referred to: Water; 20°C; 998.3kg/m³; 1.005mm²/s
Tolerance as per ISO 9906 / Annex A.2

Pump

Impeller Ø designed 451 mm
Nominal speed 975 1/min
Frequency 50 Hz
Impeller type Three-channel

Motor

Rated power 75 kW
Sel. explosion protection

Duty point data

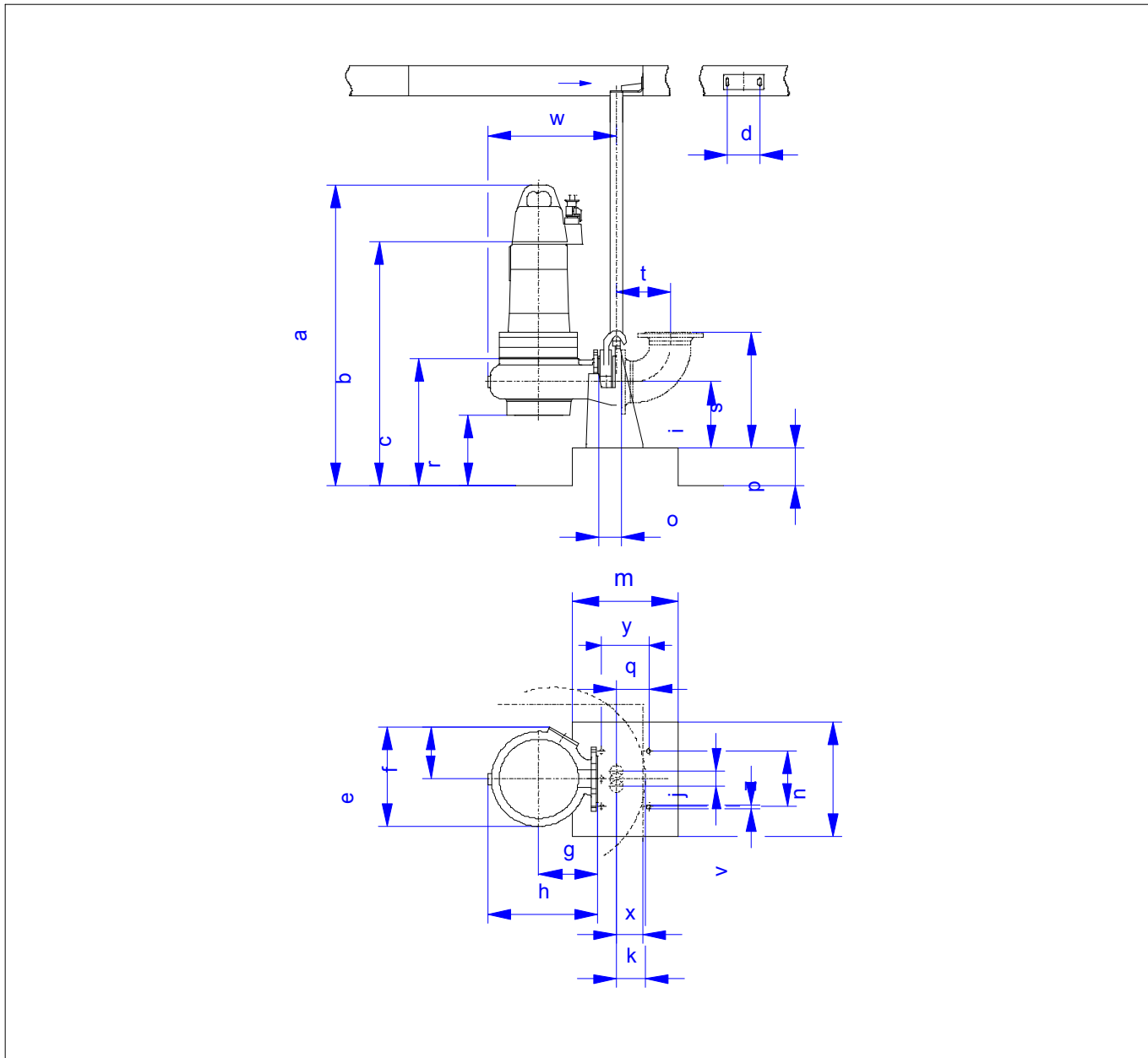
Volume flow
Head
Shaft power P2
Hydr. efficiency η hyd.
Power input P1
Required pump NPSH
Rotational speed 978 1/min

Dimensions

FA 25.93D
With motor
FK 34.1-6/50

Project ID Untitled project 2025-03-30 11:34:50.544
Project name
Installation location
Customer pos. No.

Date 2025-03-30



Dimensions

Name	Value	Name	Value
a	1,999 mm	m	600 mm
b = min. water level	547 mm	n	650 mm
c	547 mm	o	127 mm
d	270 mm	p	180 mm
e	930 mm	q	135 mm
f	523 mm	r	252 mm
g	630 mm	s	600 mm
h	1,073 mm	t	378 mm
i	250 mm	v	25 mm
j	120 mm	w	1,172 mm

Connections

Suction port	DN300 PN10
Discharge port	DN250 PN10
Suspension device	DN250/2R