



Contact
E-mail
Phone

Customer

Contact
E-mail
Phone

Technical data

FA 10.82G

With motor

FK 202-4/22

Project ID Untitled project 2025-03-30 11:34:50.544
Project name
Installation location
Customer pos. No.

Date 2025-03-30

Pump

Pump type	FA 10.82G
Installation type	Suspension device 1 DN100S/2RK
Free passage	90 mm
Nominal speed	1,450 1/min
Rated frequency	50 Hz
Impeller type	Solid G
Impeller construction	Semi-open

Impeller size

max. possible	270 mm
min. possible	215 mm
standard	270 mm
designed	270 mm

Suction port

Rated diameter	DN150
Pressure rating	PN10
Standard	EN1092-2-S

Discharge port

Rated diameter	DN100
Pressure rating	PN10
Standard	EN1092-2-D

Weights

Weight	max. 91 kg
Weight of motor	138 kg
Weight of unit	max. 229 kg

Materials

Pump housing	EN-GJL-250
Impeller	EN-GJS-500-7
Suction ports	EN-GJS-500-7

Motor

Motor name	FK 202-4/22
Number of poles	4
Rated power	15 kW
Rated speed	1430 1/min
Power input with rated power	18.3 kW
Rated voltage	400 ~3 V
Current input with rated power	31.1 A
Efficiency with rated power	82 %
cos phi with rated power	0.85
cos phi with starting	
Rated frequency	50 Hz
Operation type wet	S1
Operation type dry	S1
Starting current, direct starting	125 A
Starting current, star-delta	41.7 A
Starting torque	164 Nm
Inertia moment	0.0438 kg m ²
Degree of protection	IP 68
Sel. explosion protection	
Ex-designation	
Ex-number	
Motor connection cable	4x6 + 2x1,5 NSSHÖU
Max. fluid temperature	60 °C
Starts per hour max.	15

Duty point data

Volume flow	
Head	
Shaft power P ₂	
Hydr. efficiency η _{hyd.}	
Power input P ₁	
Fluid	Water
Required pump NPSH	
Rotational speed	1,445 1/min
Total efficiency	$= \frac{P_2 * \text{Hydr. efficiency } \eta_{\text{hyd.}}}{P_1}$



Contact
E-mail
Phone

Customer

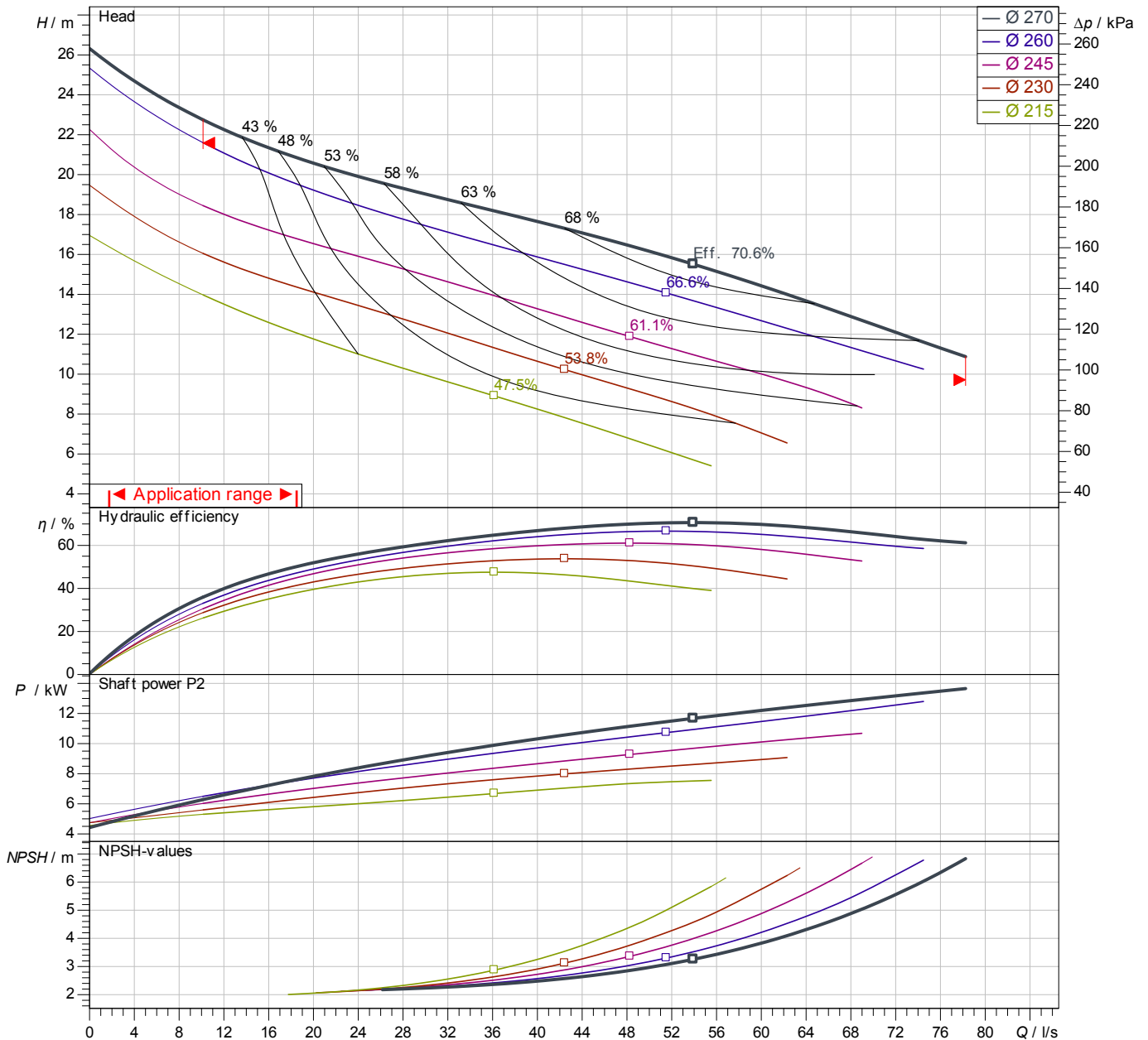
Contact
E-mail
Phone

Performance curves

FA 10.82G
With motor
FK 202-4/22

Project ID: Untitled project 2025-03-30 11:34:50.544
Project name
Installation location
Customer pos. No.

Date 2025-03-30



Power data referred to: Water; 20°C; 998.3kg/m³; 1.005mm²/s
Tolerance as per ISO 9906 / Annex A.2

Pump

Impeller Ø designed 270 mm
Nominal speed 1,430 1/min
Frequency 50 Hz
Impeller type Solid G

Motor

Rated power 15 kW
Sel. explosion protection

Duty point data

Volume flow
Head
Shaft power P2
Hydr. efficiency η hyd.
Power input P1
Required pump NPSH
Rotational speed 1445 1/min

Contact
E-mail
Phone

Customer

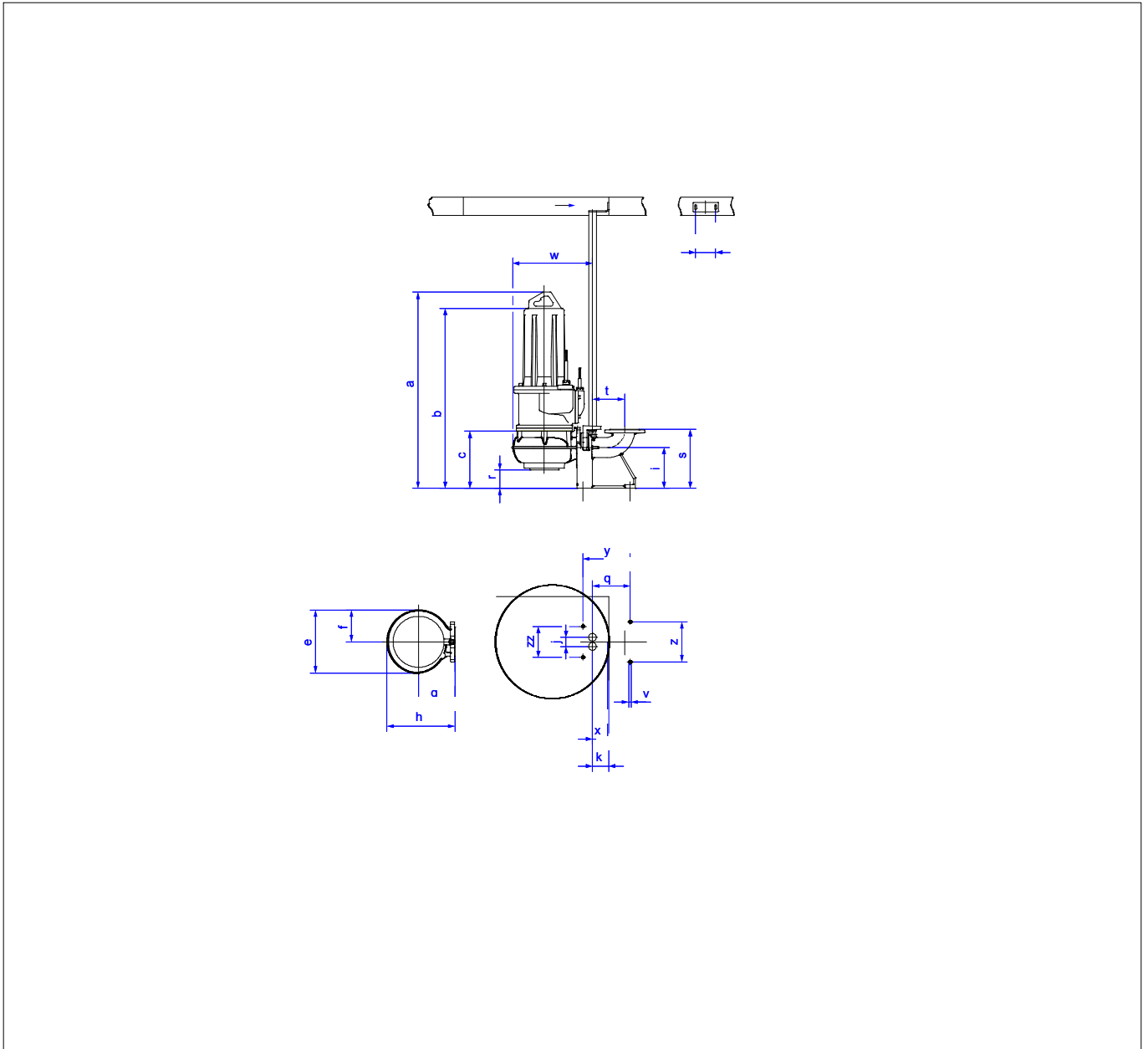
Contact
E-mail
Phone

Dimensions

FA 10.82G
With motor
FK 202-4/22

Project ID Untitled project 2025-03-30 11:34:50.544
Project name
Installation location
Customer pos. No.

Date 2025-03-30



Dimensions

Name	Value	Name	Value
a	1,141 mm	k	98 mm
b = min. water level	320 mm	q	206 mm
c	320 mm	r	84 mm
d	110 mm	s	325 mm
e	443 mm	t	176 mm
f	245 mm	v	13.5 mm
g	280 mm	w	561 mm
h	496 mm	x	90 mm
i	225 mm	y	260 mm
j	50 mm	z	220 mm

Connections

Suction port	DN150 PN10
Discharge port	DN100 PN10
Suspension device 1	DN100S/2RK