



Contact  
E-mail  
Phone

Customer

Contact  
E-mail  
Phone

## Technical data

**FA 30.93T**  
With motor  
**FK 34.1-6/33**

Project ID                      Untitled project 2025-03-30 11:34:50.544  
Project name  
Installation location  
Customer pos. No.

Date    2025-03-30

### Pump

Pump type	FA 30.93T
Installation type	Suspension device DN300N/2RK
Free passage	95 mm
Nominal speed	1,050 1/min
Rated frequency	50 Hz
Impeller type	Solid T
Impeller construction	Closed

### Impeller size

max. possible	450 mm
min. possible	380 mm
standard	450 mm
designed	450 mm

### Suction port

Rated diameter	DN300
Pressure rating	PN10
Standard	EN1092-2-S

### Discharge port

Rated diameter	DN300
Pressure rating	PN10
Standard	EN1092-2-D

### Weights

Weight	max. 350 kg
Weight of motor	667 kg
Weight of unit	max. 1017 kg

### Materials

Pump housing	Cast iron
Stationary wear ring	1.4308/1.4470
Impeller	Cast iron
Mobile wear ring	1.4308/1.4470
Suction ports	Cast iron

### Motor

Motor name	FK 34.1-6/33
Number of poles	6
Rated power	55 kW
Rated speed	975 1/min
Power input with rated power	63.2 kW
Rated voltage	400 ~3 V
Current input with rated power	108.6 A
Efficiency with rated power	87 %
cos phi with rated power	0.84
cos phi with starting	
Rated frequency	50 Hz
Operation type wet	S1
Operation type dry	S1
Starting current, direct starting	495 A
Starting current, star-delta	165 A
Starting torque	834 Nm
Inertia moment	0.881 kg m <sup>2</sup>
Degree of protection	IP 68
Sel. explosion protection	
Ex-designation	
Ex-number	
Motor connection cable	4x35 + 4x1,5 NSSHÖU
Max. fluid temperature	40 °C
Starts per hour max.	15

### Duty point data

Volume flow	
Head	
Shaft power P <sub>2</sub>	
Hydr. efficiency η <sub>hyd.</sub>	
Power input P <sub>1</sub>	
Fluid	Water
Required pump NPSH	
Rotational speed	976.7 1/min
Total efficiency	$= \frac{P_2 * \text{Hydr. efficiency } \eta_{\text{hyd.}}}{P_1}$



Contact  
E-mail  
Phone

Customer

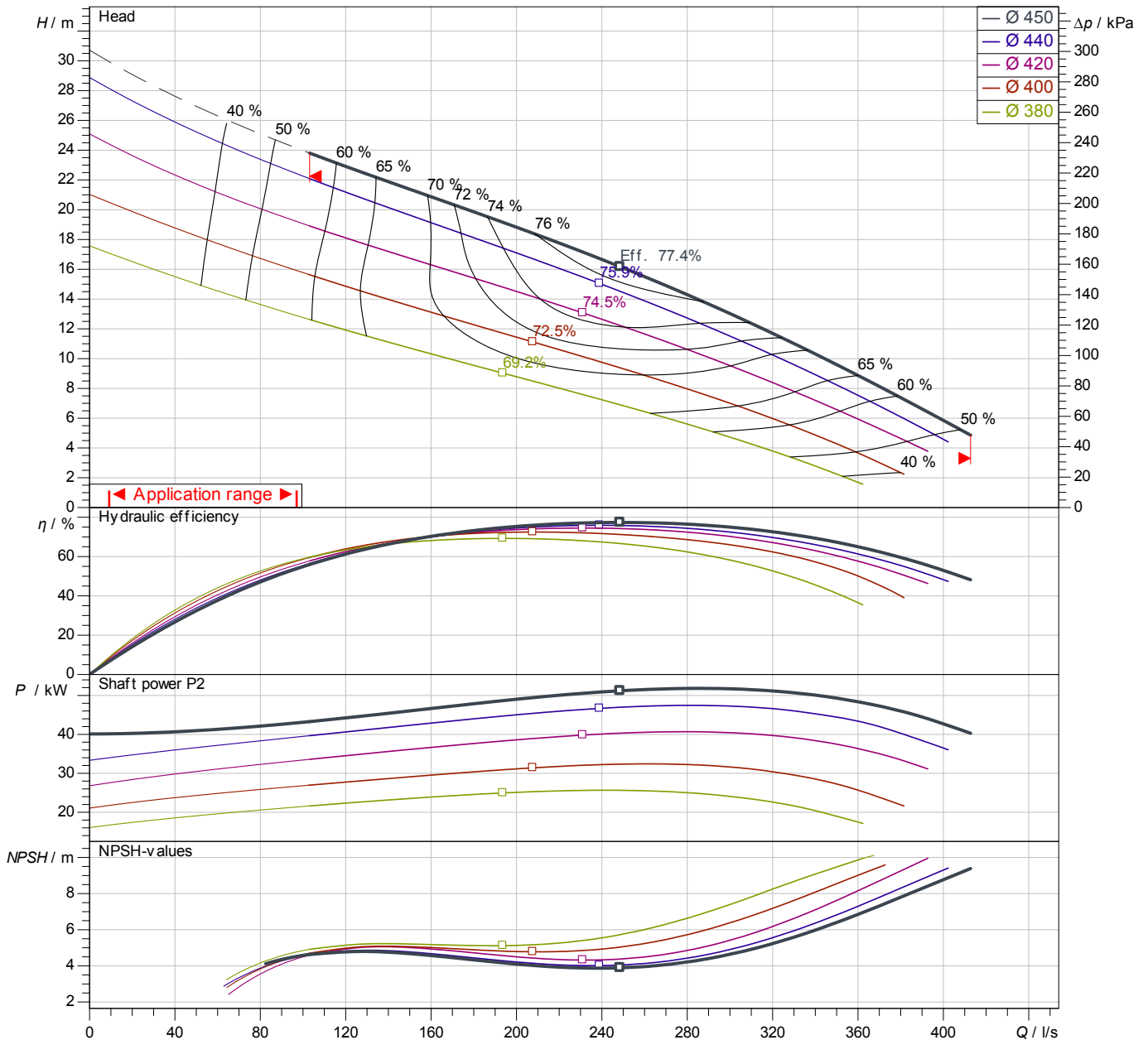
Contact  
E-mail  
Phone

## Performance curves

**FA 30.93T**  
With motor  
**FK 34.1-6/33**

Project ID: Untitled project 2025-03-30 11:34:50.544  
Project name  
Installation location  
Customer pos. No.

Date 2025-03-30



Power data referred to: Water; 20°C; 998.3kg/m<sup>3</sup>; 1.005mm<sup>2</sup>/s  
Tolerance as per ISO 9906 / Annex A.2

### Pump

Impeller Ø designed 450 mm  
Nominal speed 975 1/min  
Frequency 50 Hz  
Impeller type Solid T

### Motor

Rated power 55 kW  
Sel. explosion protection

### Duty point data

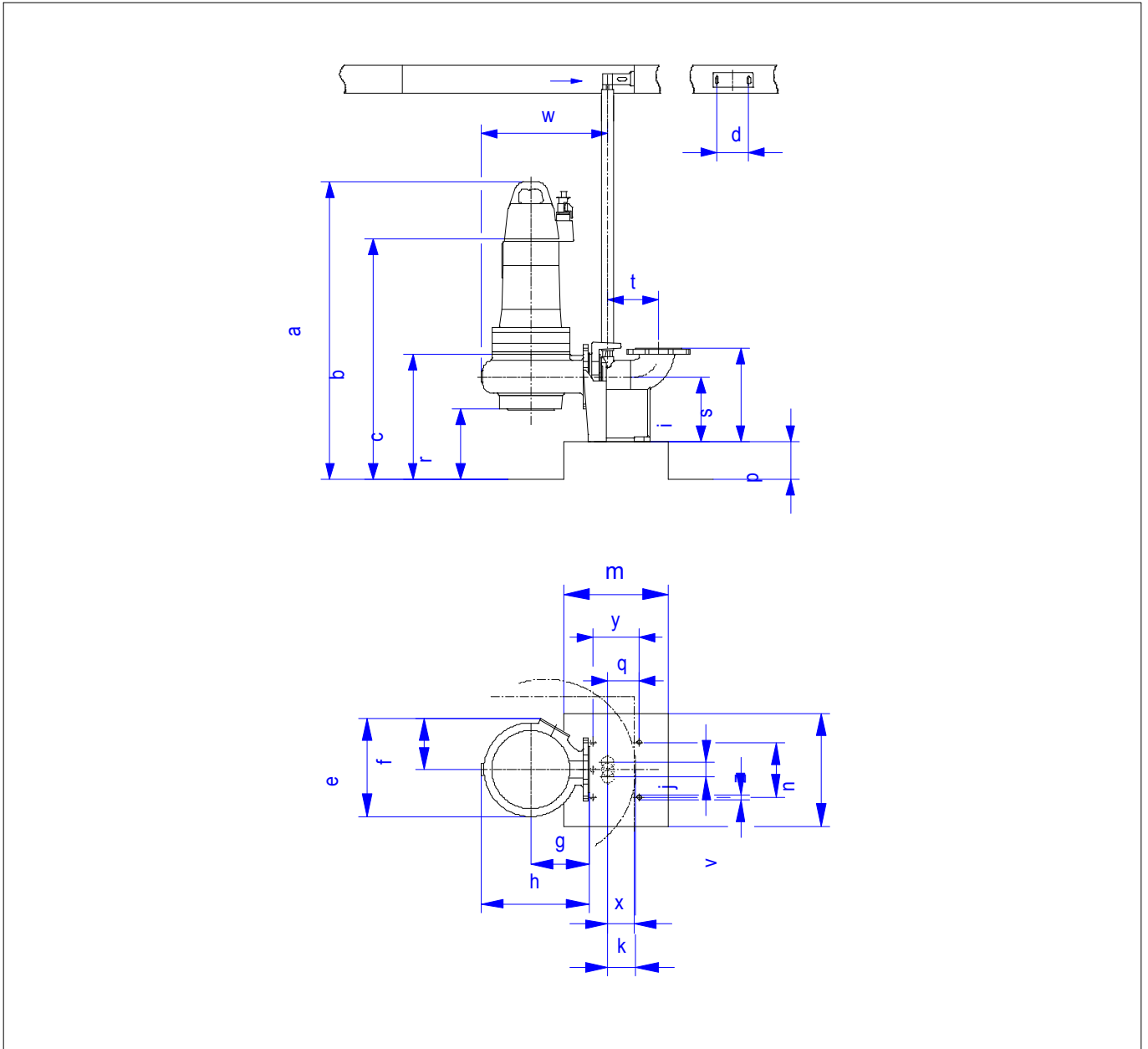
Volume flow  
Head  
Shaft power P2  
Hydr. efficiency η hyd.  
Power input P1  
Required pump NPSH  
Rotational speed 977 1/min

## Dimensions

**FA 30.93T**  
With motor  
**FK 34.1-6/33**

Project ID                      Untitled project 2025-03-30 11:34:50.544  
Project name  
Installation location  
Customer pos. No.

Date    2025-03-30



### Dimensions

Name	Value	Name	Value
a	1,844 mm	m	1,060 mm
b = min. water level	592 mm	n	920 mm
c	592 mm	p	160 mm
d	410 mm	q	434 mm
e	930 mm	r	307 mm
f	523 mm	s	675 mm
g	680 mm	t	359 mm
h	1,123 mm	v	26 mm
i	325 mm	w	1,237 mm
j	200 mm	x	150 mm

### Connections

Suction port	DN300 PN10
Discharge port	DN300 PN10
Suspension device	DN300N/2RK