



Contact
E-mail
Phone

Customer

Contact
E-mail
Phone

Technical data

FA 30.78D

With motor

T 50.1-8/54G

Project ID Untitled project 2025-03-30 11:34:50.544
Project name
Installation location
Customer pos. No.

Date 2025-03-30

Pump

Pump type	FA 30.78D
Installation type	Suspension device
	DN300N/2RK
Free passage	100 mm
Nominal speed	740 1/min
Rated frequency	50 Hz
Impeller type	Three-channel
Impeller construction	Closed

Impeller size

max. possible	740 mm
min. possible	585 mm
standard	740 mm
designed	740 mm

Suction port

Rated diameter	DN400
Pressure rating	PN10
Standard	EN1092-2-S

Discharge port

Rated diameter	DN300
Pressure rating	PN10
Standard	EN1092-2-D

Weights

Weight	max. 640 kg
Weight of motor	2131 kg
Weight of unit	max. 2861 kg

Materials

Pump housing	EN-GJS-500-7
Stationary wear ring	1.4462/1.4470
Impeller	EN-GJS-500-7
Mobile wear ring	1.4308
Suction ports	EN-GJL-250

Motor

Motor name	T 50.1-8/54G
Number of poles	8
Rated power	165 kW
Rated speed	740 1/min
Power input with rated power	176.5 kW
Rated voltage	400 ~3 V
Current input with rated power	322.4 A
Efficiency with rated power	93.5 %
cos phi with rated power	0.79
cos phi with starting	
Rated frequency	50 Hz
Operation type wet	S1
Operation type dry	
Starting current, direct starting	1600 A
Starting current, star-delta	533.3 A
Starting torque	1961 Nm
Inertia moment	6.64 kg m ²
Degree of protection	IP 68
Sel. explosion protection	
Ex-designation	
Ex-number	
Motor connection cable	2X 4x50 + 7x1,5 NSSHÖU
Max. fluid temperature	40 °C
Starts per hour max.	10

Duty point data

Volume flow	
Head	
Shaft power P ₂	
Hydr. efficiency η _{hyd.}	
Power input P ₁	
Fluid	Water
Required pump NPSH	
Rotational speed	741 1/min
Total efficiency	$= \frac{P_2 * \text{Hydr. efficiency } \eta_{\text{hyd.}}}{P_1}$



Contact
E-mail
Phone

Customer

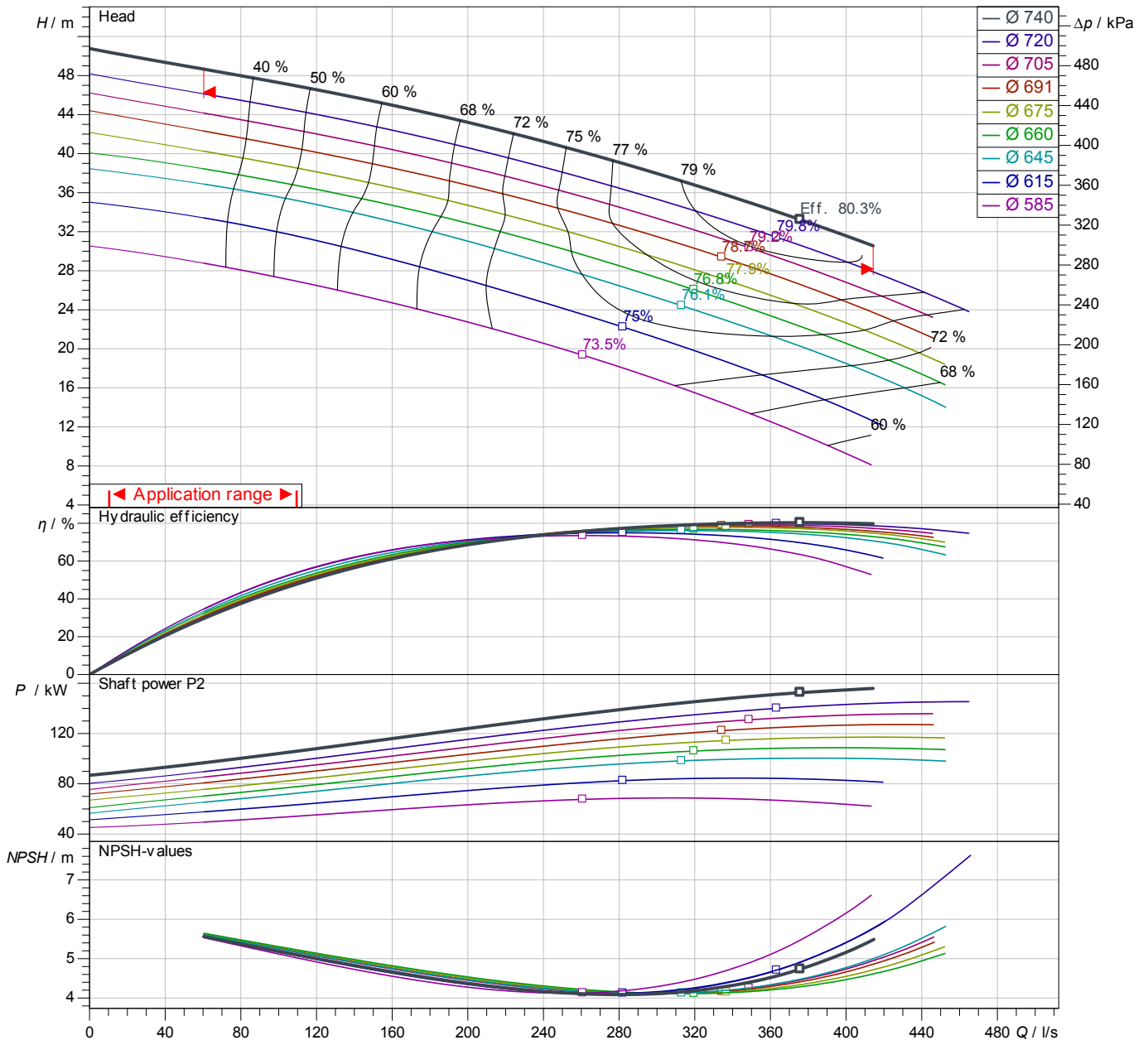
Contact
E-mail
Phone

Performance curves

FA 30.78D
With motor
T 50.1-8/54G

Project ID: Untitled project 2025-03-30 11:34:50.544
Project name
Installation location
Customer pos. No.

Date 2025-03-30



Power data referred to: Water; 20°C; 998.3kg/m³; 1.005mm²/s
Tolerance as per ISO 9906 / Annex A.2

Pump

Impeller Ø	designed	740 mm
Nominal speed		740 1/min
Frequency		50 Hz
Impeller type		Three-channel

Motor

Rated power	165 kW
Sel. explosion protection	

Duty point data

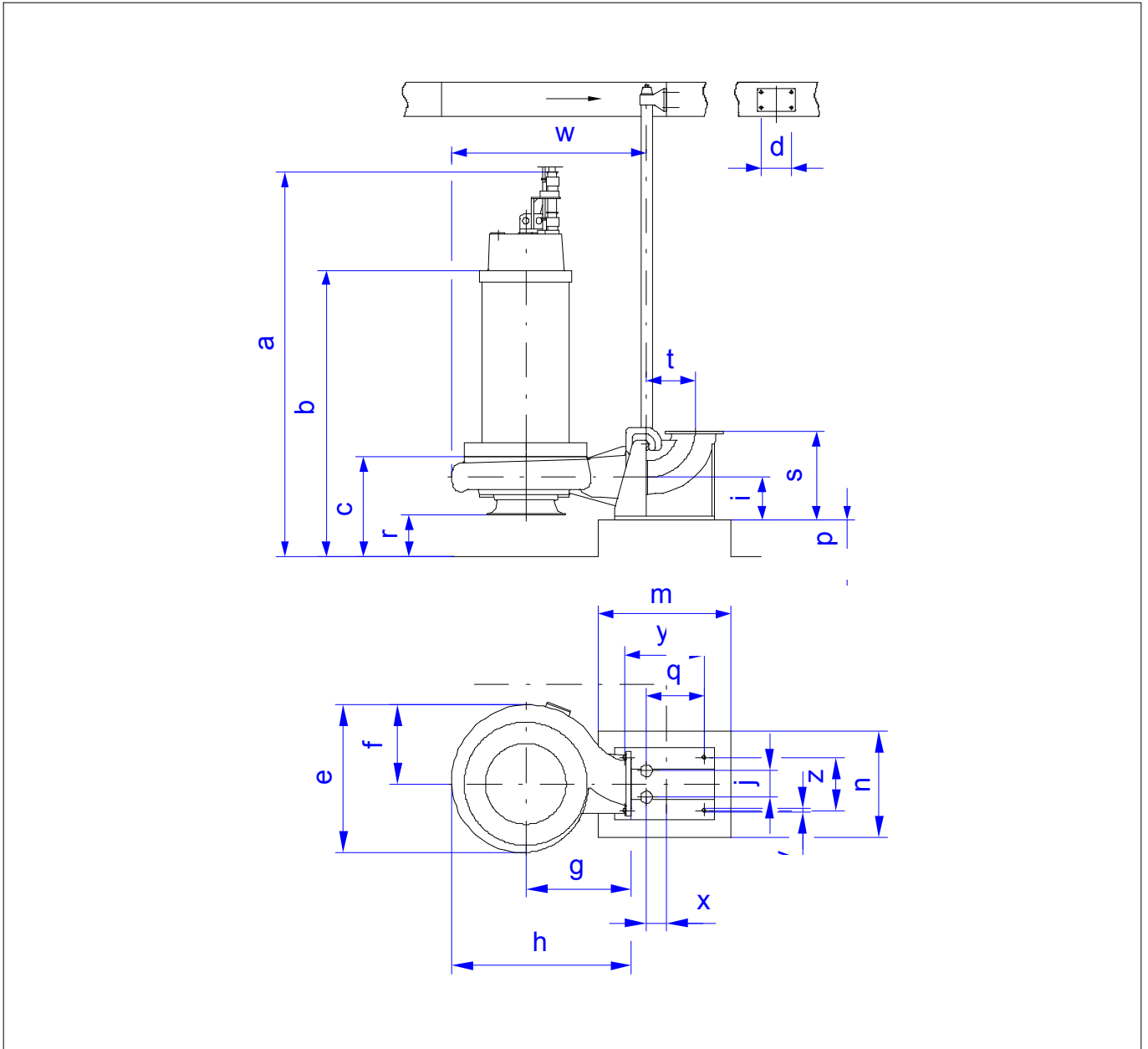
Volume flow	
Head	
Shaft power P2	
Hydr. efficiency η hyd.	
Power input P1	
Required pump NPSH	
Rotational speed	741 1/min

Dimensions

FA 30.78D
With motor
T 50.1-8/54G

Project ID Untitled project 2025-03-30 11:34:50.544
Project name
Installation location
Customer pos. No.

Date 2025-03-30



Dimensions

Name	Value	Name	Value
a	3,155 mm	m	1,060 mm
b = min. water level	2,272 mm	n	920 mm
c	748 mm	p	270 mm
d	410 mm	q	434 mm
e	1,113 mm	r	309 mm
f	595 mm	s	675 mm
g	800 mm	t	359 mm
h	1,360 mm	v	26 mm
i	325 mm	w	1,472 mm
j	200 mm	x	150 mm

Connections

Suction port	DN400 PN10
Discharge port	DN300 PN10
Suspension device	DN300N/2RK