

3HM14S22T6PQBE

Technical data

Company name
Contact
Phone number
e-mail address

Operating data

Pump type	Single head pump	Fluid	Water
Available system NPSH	ft 0	Operating temperature t A	°F 39.2
Nominal flow	US g.p.m. 0	pH-value at t A	7
Nominal head	ft 0	Density at t A	lb/ft ³ 62.4
Static head	ft 0	Kin. viscosity at t A	ft ² /s 1.689E-5
Inlet pressure	psi 0	Vapor pressure at t A	psi 14.5
Environmental temperature	°F 68	Solids	0
		Altitude	ft 0

Pump data

Make	Lowara	Nominal	US g.p.m. ()
Speed	rpm 3500	Flow	Max- US g.p.m. 23
Number of stages	14	Min-	US g.p.m.
Max. casing pressure	psi	Nominal	ft
Max. working pressure	psi 217.4	Head	at Qmax ft 251.5
Head H(Q=0)	ft 500		at Qmin ft 501.3
Weight	lb 53	Shaft power	hp ()
	Max. inch 3 1/8	Max. shaft power	hp 2.9
Impeller R	designed inch 3 1/8	Efficiency	%
	Min. inch 3 1/8	NPSH 3%	ft

Pump Materials

Head	Stainless steel / AISI 304
Impeller	Stainless steel / AISI 304
Diffuser	Stainless steel / AISI 304
Outer sleeve	Stainless steel / AISI 304
Shaft	Stainless steel / AISI 316
Adapter	Aluminium
Ring with foot	Aluminium
SEAL HOUSING	Stainless steel / AISI 304
Shaft sleeve and bushing	Tungsten carbide
Fill / drain plugs	Stainless steel / AISI 316
Tie rods	Stainless steel / AISI 431
Wear ring	Technopolymer

Shaft Seal

e-HM Mechanical seal	Burgmann
e-HM - Burgmann	
1. Rotating ring	Silicon Carbide
2 - Stationary part	Carbon, resin-impregnated
3 - Elastomers	EPDM
4 - Springs	AISI 316
5 - Other components	AISI 316

Motor data

Manufacturer	Lowara	Electric voltage	220 V	Speed	3490 rpm	Insulation class	F
Specific design	IE3 3ph Flange Motor			Frame size	90	Colour	RAL 5010
Type	PLM90HM/322 E3						
Rated power	2.9502 hp	Degree of protection	IP55				
Electric current	7.97 A						

Remarks:

3HM14S22T6PQBE

Performance curve

Company name
Contact
Phone number
e-mail address

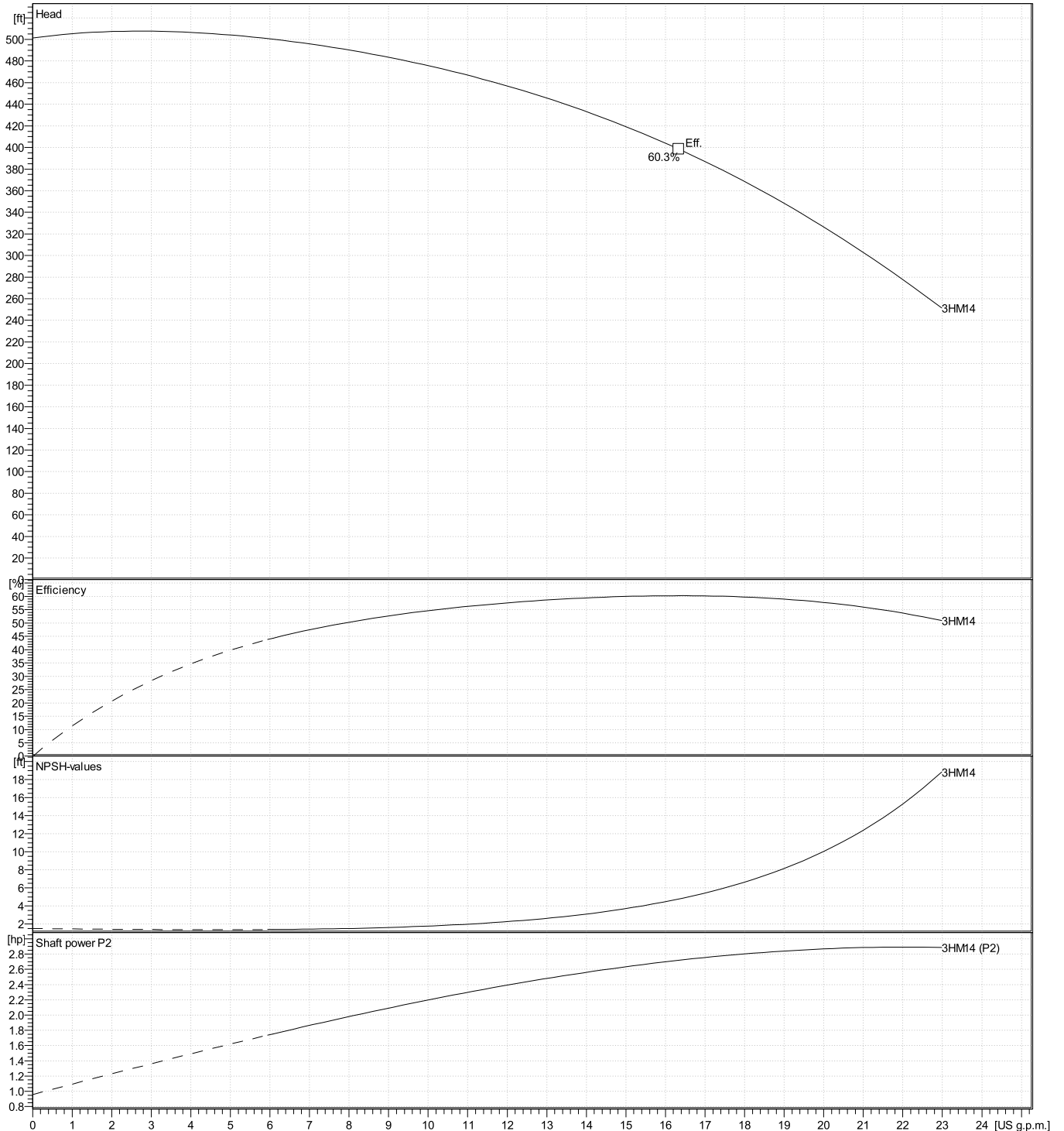
Hydraulic data

Operating Data Specification		Hydraulic data (duty point)		Impeller design	
Flow	0 US g.p.m.	Flow		Impeller R	3 1/8 inch
Head	0 ft	Head		Frequency	60 Hz
Static head	0 ft			Speed	3500 rpm

Power datas referred to:

Water [100%] ; 39.2°F; 62.4lb/ft³; 1.69E-5ft²/s

Performance according to ISO 9906:2012 – Grade 3B

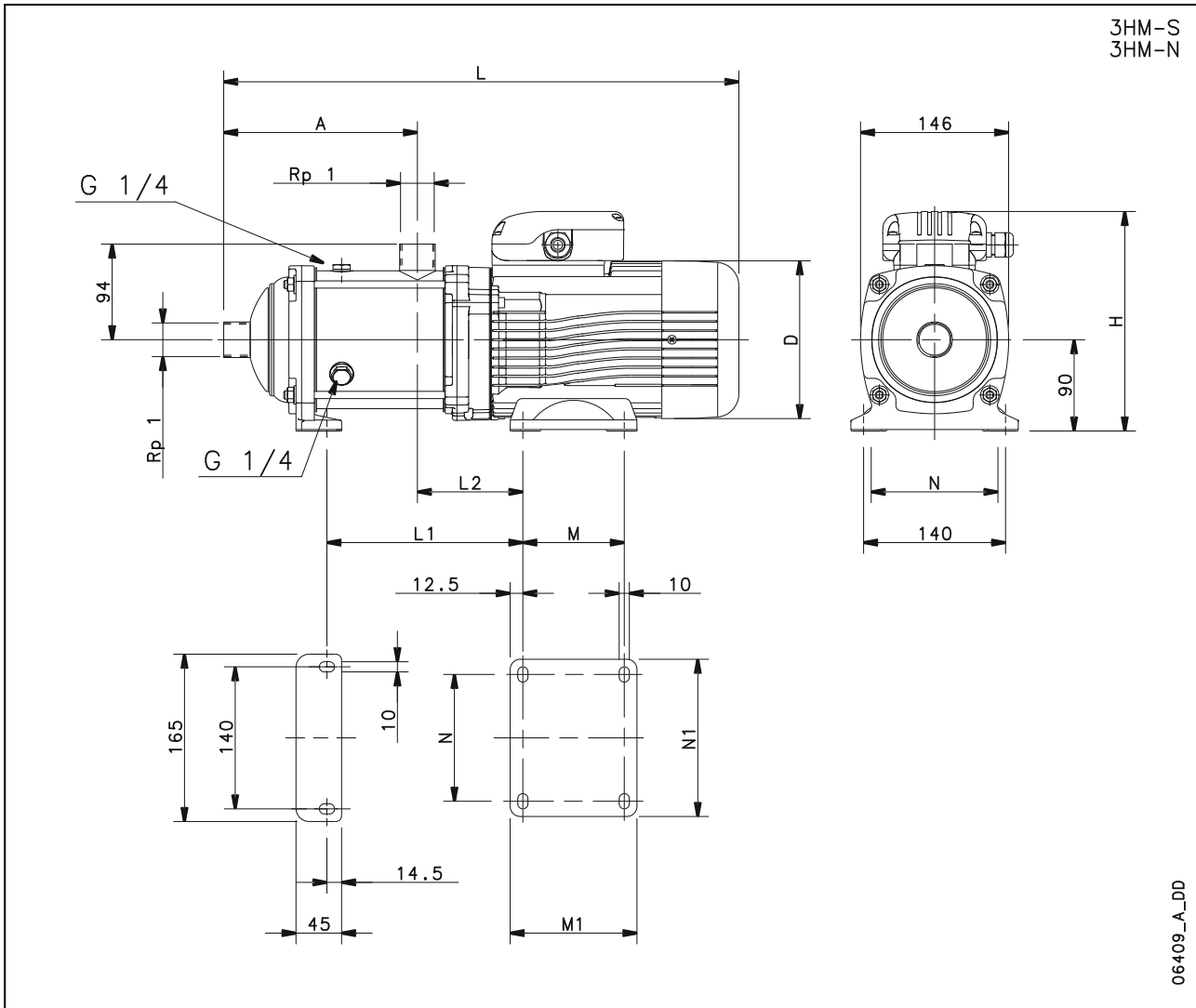


3HM14S22T6PQBE

Dimensions

Company name
Contact
Phone number
e-mail address

Drawing



Dimensions inch

Electrical and dimensional data refer to IE3 motor

A	11 ⁷ / ₁₆	N	5 ¹ / ₂			Weight 50 lb
D	6 ⁷ / ₈	N1	6 ⁷ / ₁₆			
H	8 ¹³ / ₁₆	PN	9 ⁹ / ₈			
L	26 ⁷ / ₈					
L1	12 ⁷ / ₁₆					
L2	5					
M	4 ¹⁵ / ₁₆					