

LNEE 50-160/40/P25VCS4

Technical data

Company name
Contact
Phone number
e-mail address

Operating data				
1	Pumpe type	Single head pump	Fluid	Water
2	No. of pumps	1	Operating temperature t A	°C 4
3	Nominal flow	m ³ /h 0	Max / Min Operating Temperature mech. Seal	°C 120 / -25
4	Nominal head	m 0	pH-value at t A	7
5	Static head	m 0	Density at t A	kg/m ³ 1000
6	Inlet pressure	kPa 0	Kin. viscosity at t A	mm ² /s 1.569
7	Environmental temperature	°C 20	Vapor pressure at t A	kPa 100
8	Available system NPSH	m 0	Altitude	0

Pump data				
9	Lubrication	Standard, Grease lubrication [Std]		
10	Execution			
11	Design	In-Line single head		
12	Operating speed	2900 rpm	Stages	1
13	Suction nozzle	DN 50 /	PN 16 /	EN1092-2
14	Discharge nozzle	DN 50 /	PN 16 /	EN1092-2
15	Max. casing pressure	kPa		
16	Max. working pressure	kPa	262.8	
17	Impeller type	Radial impeller		
18	Head H(Q=0)	m	27	
19	Max. shaft power	kW	3.9	
20	Pump weight	kg		
21	Total weight	kg	51.0	

		Impeller Ø		Flow		Head		Shaft power		Efficiency	
	Max.	mm	165		Max-	m ³ /h		at Qmax	m		
	designed	mm	139		Min-	m ³ /h		at Qmin	m		
	Min.	mm	127		Nominal	m ³ /h					
	Max-	m ³ /h	50								
	Min-	m ³ /h	11.2								
	Nominal	m									
	at Qmax	m	18.4								
	at Qmin	m	26.7								
	Shaft power	kW									
	Efficiency	%									
	NPSH 3%	m									

Materials				
22		Pump		Shaft Seal
23	Volute Casing	Cast iron		Single mechanical seal, without shaft sleeve
24	Casing Cover	Cast iron		eMG12 - Ø22mm
25	Impeller	Stainless steel / AISI 304		Mechanical seal diameter
26	Stub shaft	Stainless steel / AISI 316L		22 mm
27	Wear ring	Stainless steel / AISI 304		1. Rotating ring
28	Impeller lock nut and washer	Stainless steel / AISI 304		Carbon graphite resin impregnated
29	Impeller key	Stainless steel / AISI 316L		2. Stationary ring
30	Fill and drain plugs	Nickel-plated brass		SiC, silicon carbide, sintered press.less
31				3. Secondary seal
32				Ethylene propylene rubber (EPDM)
33				4. Springs
34				CrNiMo - Steel
35				5. Others
36				EPDM - WRAS
37				Gaskets of the pump
38				Ethylene propylene rubber (EPDM)
39				
40				
41				

Motor data				
Electrical and dimensional data refer to IE3 motor				
42	Manufacturer	Lowara		
43	Specific design	IE3 3ph Flange Motor		
44	Type	PLM 112R B14 4 kW		
45	Rated power	4 kW	Rated current	7.62 A
46	Nominal speed	2885 rpm	Rated voltage	400 V
47	Frame size	112R	Service factor	1
48	Weight	kg 37.6	Degree of protection	IP55

Remarks				
49				
50				
50				
52				

LNEE 50-160/40/P25VCS4

Performance curve

Company name
Contact
Phone number
e-mail address

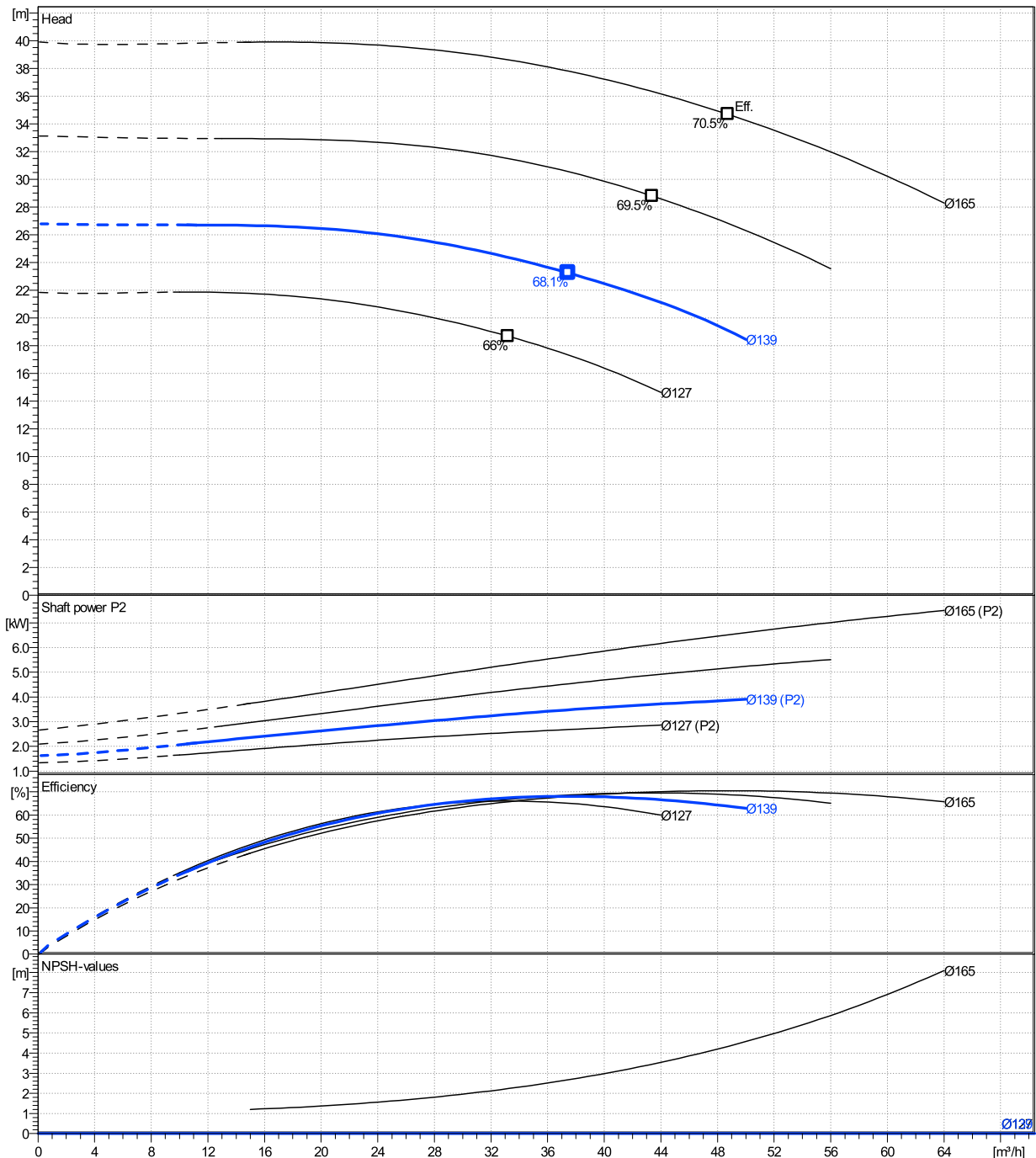
	Ø mm	Pump capacity			Pump head		Shaft power P2			Frequency		Hz	50	
		Operating range Min. m³/h	Max. m³/h	η Max. m³/h	H(Q=0) m	η Max. m	P2(Q=0) kW	Max. kW	η Max. kW	Operating speed rpm	2900			
actual	139	11.2	50	37.4	26.8	23.2	3.9	3.48	Nominal flow	m³/h	0	Nominal head	m	0
Min.	0	/	/	33.2	21.8	18.7	/	2.56	Inlet pressure	kPa	0	Static head	m	0
Max.	165	/	/	48.7	39.9	34.7	/	6.51						

Power datas referred to:

hydr. Performance acceptance acc. To EN ISO 9906 Class Grade 3B

Water [100%] ; 4°C; 1000kg/m³; 1.57mm²/s

MEI: N.A - according to Ecodesign Directive 2009/125/EC and Regulation (EU) No.547/2012



LNEE 50-160/40/P25VCS4

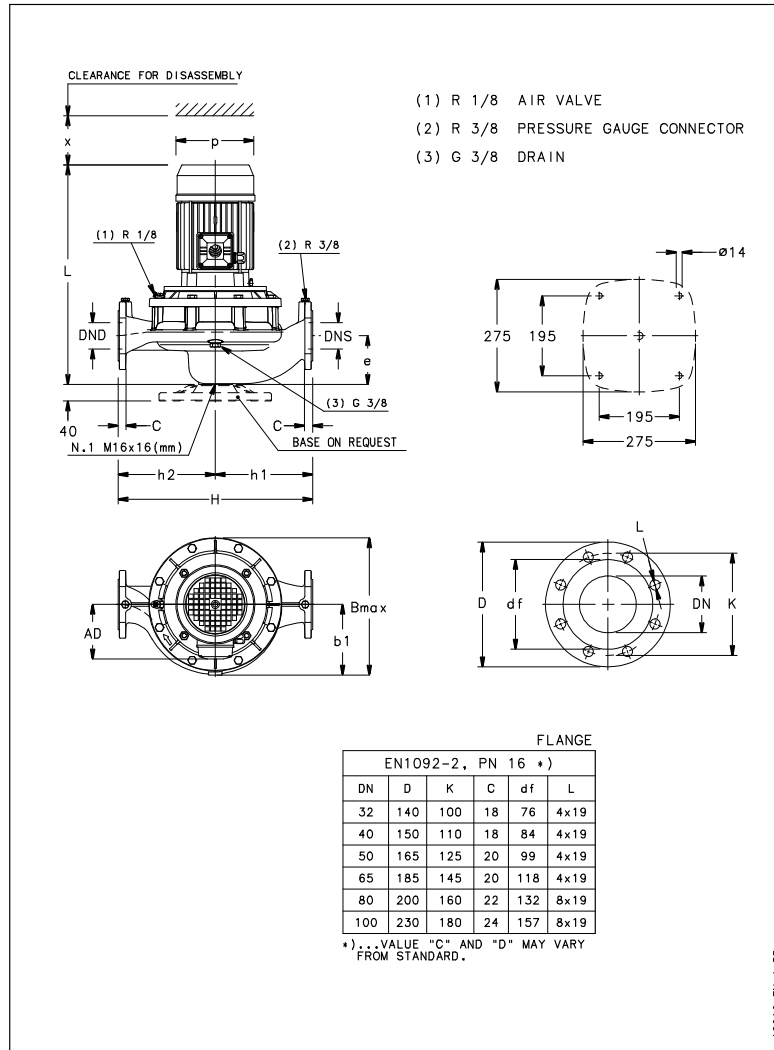
Dimensions

Company name
Contact
Phone number
e-mail address

Close coupled

PLM 112R B14 4 kW

Electrical and dimensional data refer to IE3 motor



Dimensions [mm]

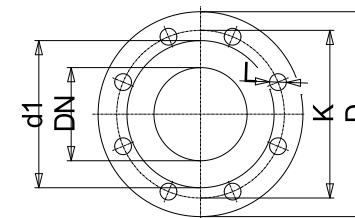
AD	154
b1	128
Bmax	272
DND	50
DNS	50
e	116
H	340
h1	180
h2	160
L	535
p	197
x	96

Weight

Total weight	51 kg
--------------	-------

Connections

Suction nozzle		Discharge nozzle	
DN 50		DN 50	
PN 16		PN 16	
EN1092-2		EN1092-2	
C	20	C	20
D	165	D	165
df	99	df	99
DN	50	DN	50
K	125	K	125
L	4 x 19	L	4 x 19



Value C, D may vary from Standard

Dimensions and weight without obligation

Project	Xylect-20127611
Block	LNEE 50-160/11/P45RCS4

Created by	
Created on	12/20/2024

Last update 12/20/2024