

LNEE 80-160/185/P26PCC4

Technical data

Company name
Contact
Phone number
e-mail address

| Operating data | | | | |
|----------------|---------------------------|------------------|--|-----------------------------|
| 1 | Pumpe type | Single head pump | Fluid | Water |
| 2 | No. of pumps | 1 | Operating temperature at t A | °F 39.2 |
| 3 | Nominal flow | US g.p.m. 0 | Max / Min Operating Temperature mech. Seal | °F 120 / -25 |
| 4 | Nominal head | ft 0 | pH-value at t A | 7 |
| 5 | Static head | ft 0 | Density at t A | lb/ft ³ 62.4 |
| 6 | Inlet pressure | psi 0 | Kin. viscosity at t A | ft ² /s 1.689E-5 |
| 7 | Environmental temperature | °F 68 | Vapor pressure at t A | psi 14.5 |
| 8 | Available system NPSH | ft 0 | Altitude | 0 |

| Pump data | | | | |
|-----------|-----------------------|------------------------------------|---------|----------|
| 9 | Lubrication | Standard, Grease lubrication [Std] | | |
| 10 | Execution | | | |
| 11 | Design | In-Line single head | | |
| 12 | Operating speed | 3500 rpm | Stages | 1 |
| 13 | Suction nozzle | DN 80 / | PN 16 / | EN1092-2 |
| 14 | Discharge nozzle | DN 80 / | PN 16 / | EN1092-2 |
| 15 | Max. casing pressure | psi | | |
| 16 | Max. working pressure | psi | 71.9 | |
| 17 | Impeller type | Radial impeller | | |
| 18 | Head H(Q=0) | ft | 170 | |
| 19 | Max. shaft power | hp | 23 | |
| 20 | Pump weight | kg | | |
| 21 | Total weight | lb | 359.3 | |

| | | Impeller Ø | | Flow | | Head | | Shaft power | | Efficiency | |
|--|----------|------------|---------|------|---------|-----------|----|-------------|----|------------|---|
| | Max. | inch | 6 5/8 | | Nominal | US g.p.m. | | ft | hp | | % |
| | designed | inch | 6 1/4 | | at Qmax | | ft | 73.9 | | | |
| | Min. | inch | 5 15/16 | | at Qmin | | ft | 163 | | | |
| | Max- | US g.p.m. | 774.9 | | | | | | | | |
| | Min- | US g.p.m. | 158.5 | | | | | | | | |

| Materials | | | | |
|-----------|------------------------------|-----------------------------|--|--|
| 22 | | Pump | | Shaft Seal |
| 23 | Volute Casing | Cast iron | | Single mechanical seal, without shaft sleeve |
| 24 | Casing Cover | Cast iron | | eMG12 - Ø28mm |
| 25 | Impeller | Cast iron / ASTM Class 30 | | Mechanical seal diameter |
| 26 | Stub shaft | Stainless steel / AISI 316L | | 1 1/8 inch |
| 27 | Wear ring | Stainless steel / AISI 304 | | 1. Rotating ring |
| 28 | Impeller lock nut and washer | Stainless steel / AISI 304 | | 2. Stationary ring |
| 29 | Impeller key | Stainless steel / AISI 316L | | 3. Secondary seal |
| 30 | Fill and drain plugs | Nickel-plated brass | | 4. Springs |
| 31 | | | | 5. Others |
| 32 | | | | Gaskets of the pump |
| 33 | | | | |
| 34 | | | | |
| 35 | | | | |
| 36 | | | | |
| 37 | | | | |
| 38 | | | | |
| 39 | | | | |
| 40 | | | | |
| 41 | | | | |

| Motor data | | | | |
|--|-----------------|----------------------|----------------------|--------|
| Electrical and dimensional data refer to IE3 motor | | | | |
| 42 | Manufacturer | Lowara | | |
| 43 | Specific design | IE3 3ph Flange Motor | | |
| 44 | Type | PLM 160 B14 18,5 kW | | |
| 45 | Rated power | 24.809 hp | Rated current | 58.7 A |
| 46 | Nominal speed | 3550 rpm | Rated voltage | 220 V |
| 47 | Frame size | 160 | Service factor | 1 |
| 48 | Weight | lb 267.2 | Degree of protection | IP55 |

| Remarks | | | | |
|---------|--|--|--|--|
| 49 | | | | |
| 50 | | | | |
| 50 | | | | |
| 52 | | | | |

LNEE 80-160/185/P26PCC4

Performance curve

Company name
Contact
Phone number
e-mail address

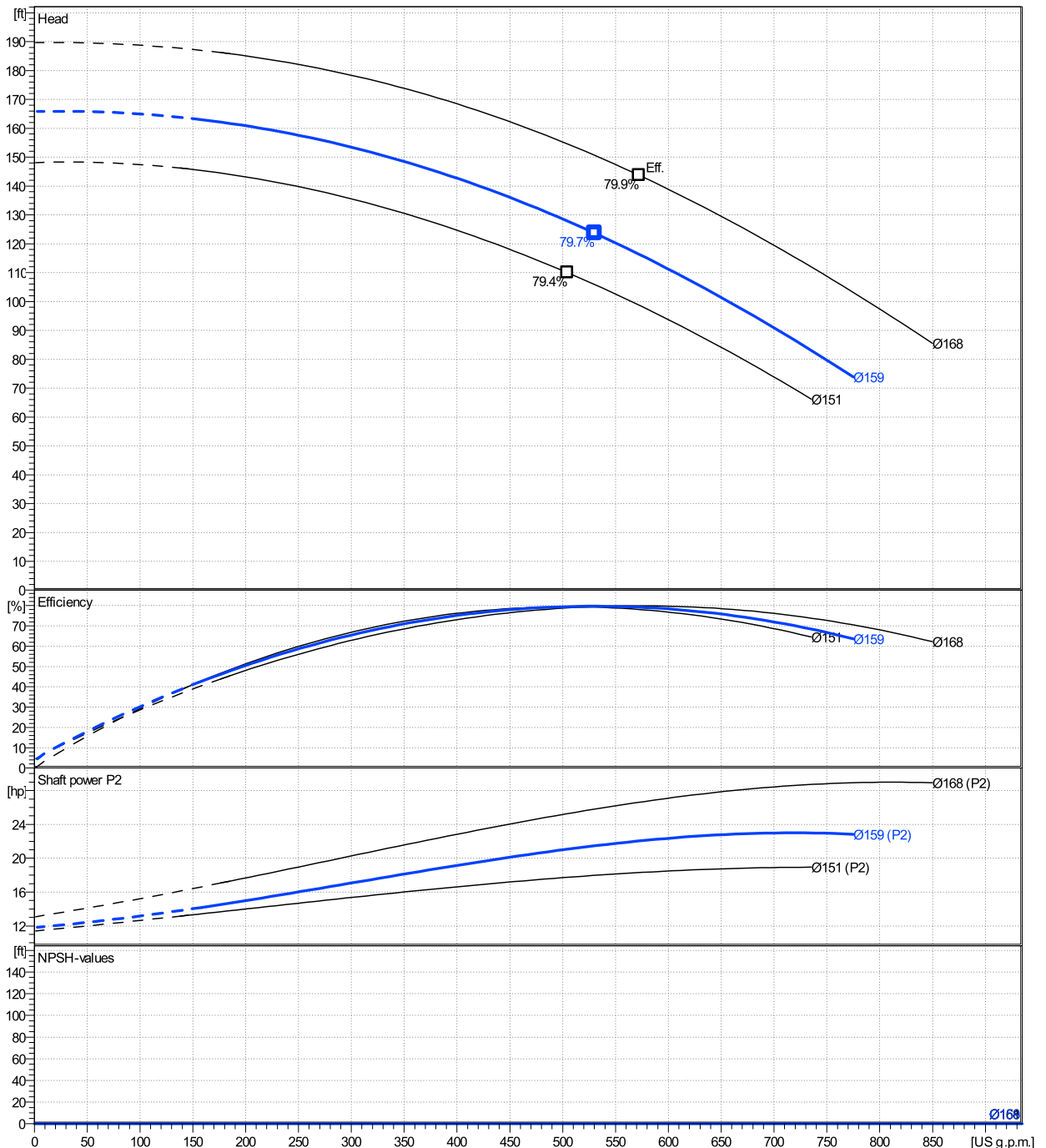
| | Ø mm | Pump capacity Operating range η | | | Pump head H(Q=0) η | | Shaft power P2 P2(Q=0) Max. η | | | Frequency Hz | | 60 |
|--------|---------|---------------------------------------|-------------------|-------------------|--------------------------|-----|--|----|------|------------------------|---------------------------|----|
| | | Min. US g.p.m. | Max. US g.p.m. | Max. US g.p.m. | ft | ft | hp | hp | hp | Operating speed rpm | Nominal flow US g.p.m. | |
| actual | 6 1/4 | 159 | 775 | 530 | 166 | 124 | | 23 | 21.5 | Nominal head | ft | 0 |
| Min. | 0 | / | / | 505 | 148 | 110 | | / | 17.7 | Inlet pressure | psi | 0 |
| Max. | 6 5/8 | / | / | 572 | 190 | 144 | | / | 26.6 | Static head | ft | 0 |

Power datas referred to:

hydr. Performance acceptance acc. To EN ISO 9906 Class Grade 3B

Water [100%] ; 39.2°F ; 62.4lb/ft³ ; 1.69E-5ft²/s

MEI: N.A - according to Ecodesign Directive 2009/125/EC and Regulation (EU) No.547/2012



LNEE 80-160/185/P26PCC4

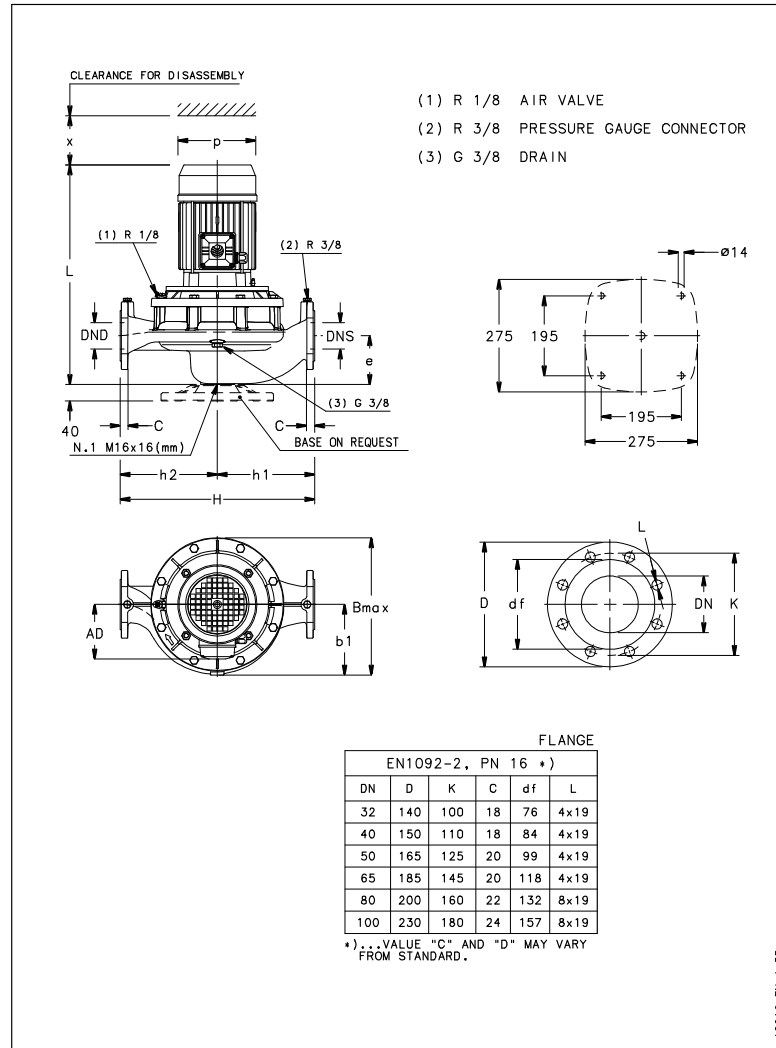
Dimensions

Company name
Contact
Phone number
e-mail address

Close coupled

PLM 160 B14 18,5 kW

Electrical and dimensional data refer to IE3 motor



Dimensions [inch]

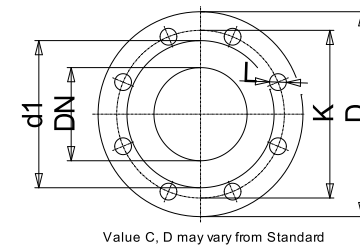
| | | | |
|------|---------------------------------|--|--|
| AD | 9 ⁷ / ₁₆ | | |
| b1 | 6 ⁵ / ₈ | | |
| Bmax | 16 ¹ / ₁₆ | | |
| DND | 3 ¹ / ₈ | | |
| DNS | 3 ¹ / ₈ | | |
| e | 4 ¹ / ₂ | | |
| H | 16 ⁹ / ₁₆ | | |
| h1 | 8 ⁷ / ₁₆ | | |
| h2 | 8 ¹ / ₁₆ | | |
| L | 28 ⁷ / ₁₆ | | |
| p | 12 ⁵ / ₁₆ | | |
| x | 4 ³ / ₈ | | |

Weight

| | |
|--------------|--------|
| Total weight | 163 kg |
|--------------|--------|

Connections

| Suction nozzle | | Discharge nozzle | |
|----------------|--------------------------------|------------------|--------------------------------|
| DN 80 | | DN 80 | |
| PN 16 | | PN 16 | |
| EN1092-2 | | EN1092-2 | |
| C | 7 ⁷ / ₈ | C | 7 ⁷ / ₈ |
| D | 7 ⁷ / ₈ | D | 7 ⁷ / ₈ |
| df | 5 ³ / ₁₆ | df | 5 ³ / ₁₆ |
| DN | 3 ¹ / ₈ | DN | 3 ¹ / ₈ |
| K | 6 ⁵ / ₁₆ | K | 6 ⁵ / ₁₆ |
| L | 8 x 19 | L | 8 x 19 |



Dimensions and weight without obligation

| | |
|---------|------------------------|
| Project | Xylect-20185360 |
| Block | LNEE 80-160/40/P46PCC4 |

Created by
Created on 1/13/2025

Last update 1/13/2025