

# LNEE 80-160/40/P46PCC4

## Technical data

Company name  
Contact  
Phone number  
e-mail address

Operating data					
1	Pumpe type	Single head pump		Fluid	Water
2	No. of pumps	1		Operating temperature t A	°F 39.2
3	Nominal flow	US g.p.m.	0	Max / Min Operating Temperature mech. Seal	°F 120 / -25
4	Nominal head	ft	0	pH-value at t A	7
5	Static head	ft	0	Density at t A	lb/ft <sup>3</sup> 62.4
6	Inlet pressure	psi	0	Kin. viscosity at t A	ft <sup>2</sup> /s 1.689E-5
7	Environmental temperature	°F	68	Vapor pressure at t A	psi 14.5
8	Available system NPSH	ft	0	Altitude	0

Pump data					
9	Lubrication	Standard, Grease lubrication [Std]			
10	Execution				
11	Design	In-Line single head		Impeller Ø	Max. inch 7 1/16
12	Operating speed	1750 rpm	Stages 1		designed inch 7 1/16
13	Suction nozzle	DN 80 /	PN 16 /	Flow	Min. inch 5 15/16
14	Discharge nozzle	DN 80 /	PN 16 /		Nominal US g.p.m.
15	Max. casing pressure	psi		Max- US g.p.m.	449.1
16	Max. working pressure	psi	23.8	Min- US g.p.m.	94.7
17	Impeller type	Radial impeller		Head	Nominal ft
18	Head H(Q=0)	ft	55		at Qmax ft 28.5
19	Max. shaft power	hp	4.8	Shaft power	hp
20	Pump weight	kg		Efficiency	%
21	Total weight	lb	222.7	NPSH 3%	ft

Materials					
22		Pump		Shaft Seal	
23	Volute Casing	Cast iron		Single mechanical seal, without shaft sleeve	
24	Casing Cover	Cast iron		eMG12 - Ø28mm	BQ7EGG-WA
25	Impeller	Cast iron / ASTM Class 30		Mechanical seal diameter	1 1/8 inch
26	Stub shaft	Stainless steel / AISI 316L		1. Rotating ring	Carbon graphite resin impregnated
27	Wear ring	Stainless steel / AISI 304		2. Stationary ring	SiC, silicon carbide, sintered press.less
28	Impeller lock nut and washer	Stainless steel / AISI 304		3. Secondary seal	Ethylene propylene rubber (EPDM)
29	Impeller key	Stainless steel / AISI 316L		4. Springs	CrNiMo - Steel
30	Fill and drain plugs	Nickel-plated brass		5. Others	EPDM - WRAS
31				Gaskets of the pump	Ethylene propylene rubber (EPDM)
32					
33					
34					
35					
36					
37					
38					
39					
40					
41					

Motor data					
Electrical and dimensional data refer to IE3 motor					
42	Manufacturer	Lowara			
43	Specific design	IE3 3ph Flange Motor			
44	Type	PLM 112 B14 4 kW			
45	Rated power	5.3641 hp	Rated current	14.8 A	
46	Nominal speed	1746 rpm	Rated voltage	220 V	
47	Frame size	112	Service factor	1	
48	Weight	lb 119.0	Degree of protection	IP55	

Remarks					
49					
50					
50					
52					

# LNEE 80-160/40/P46PCC4

## Performance curve

Company name  
Contact  
Phone number  
e-mail address

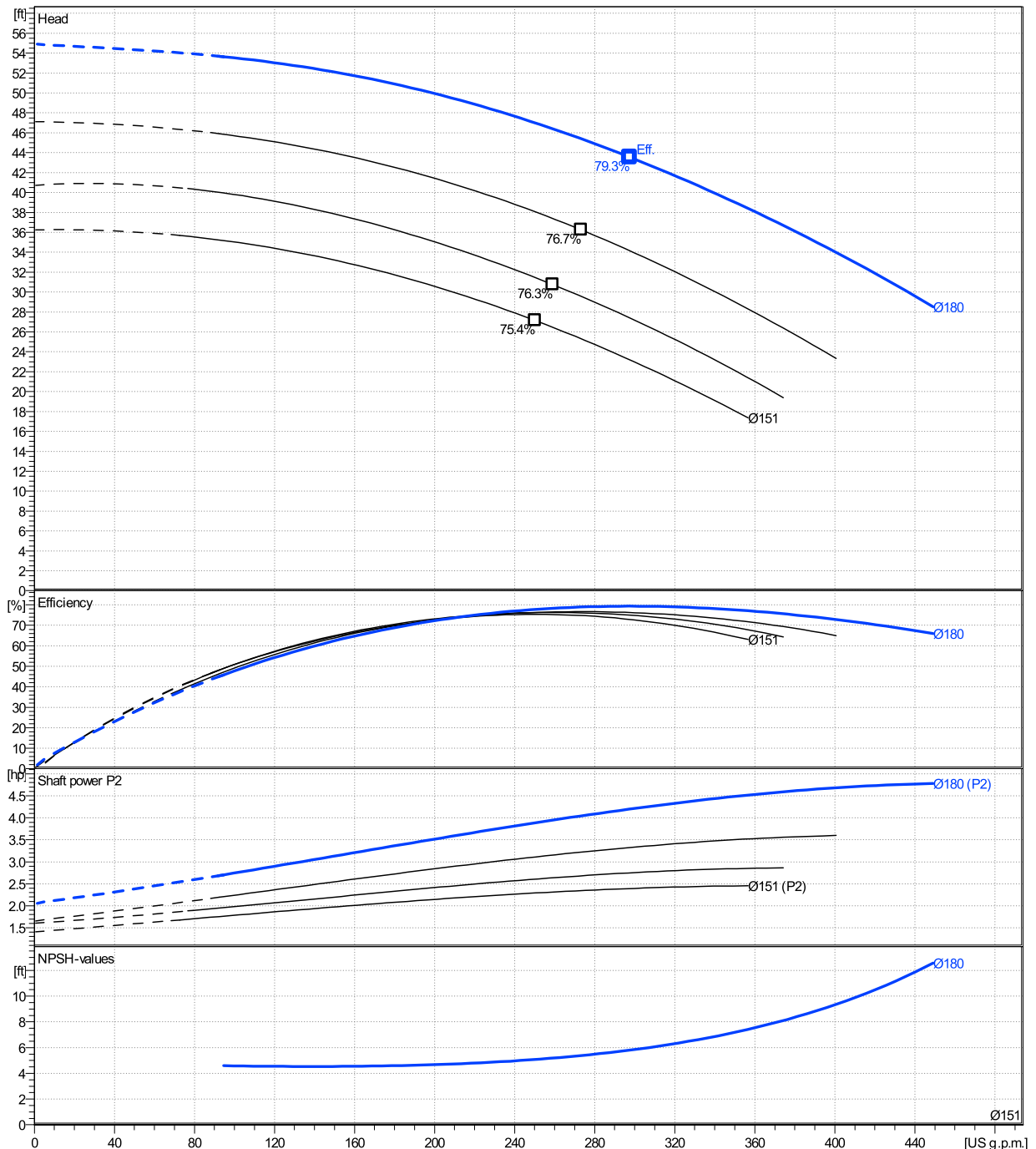
	Ø mm	Pump capacity Operating range η			Pump head H(Q=0) η		Shaft power P2 P2(Q=0) η			Frequency Hz	
		Min. US g.p.m.	Max. US g.p.m.	Max. US g.p.m.	ft	ft	hp	hp	hp	rpm	
actual	7 1/16	94.7	449	298	54.9	43.6	4.78	4.2	60	1750	
Min.	0	/	/	250	36.2	27.1	/	2.29			0
Max.	7 1/16	/	/	298	54.9	43.6	/	4.2			0

Power datas referred to:

hydr. Performance acceptance acc. To EN ISO 9906 Class Grade 3B

Water [100%] ; 39.2°F; 62.4lb/ft³; 1.69E-5ft²/s

MEI: N.A - according to Ecodesign Directive 2009/125/EC and Regulation (EU) No.547/2012



# LNEE 80-160/40/P46PCC4

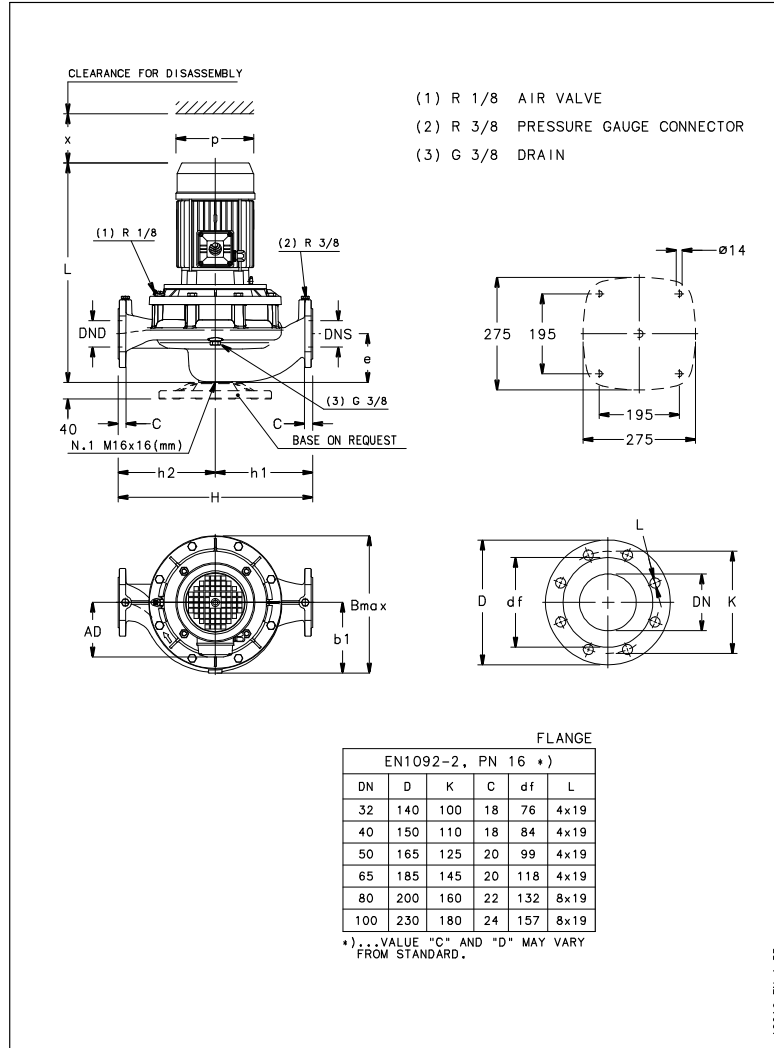
## Dimensions

Company name  
Contact  
Phone number  
e-mail address

Close coupled

PLM 112 B14 4 kW

Electrical and dimensional data refer to IE3 motor



### Dimensions [ inch ]

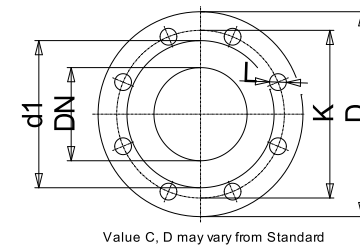
AD	6 <sup>5</sup> / <sub>8</sub>		
b1	6 <sup>5</sup> / <sub>8</sub>		
Bmax	13 <sup>1</sup> / <sub>4</sub>		
DND	3 <sup>1</sup> / <sub>8</sub>		
DNS	3 <sup>1</sup> / <sub>8</sub>		
e	4 <sup>1</sup> / <sub>2</sub>		
H	16 <sup>9</sup> / <sub>16</sub>		
h1	8 <sup>7</sup> / <sub>16</sub>		
h2	8 <sup>1</sup> / <sub>16</sub>		
L	24 <sup>1</sup> / <sub>16</sub>		
p	7 <sup>13</sup> / <sub>16</sub>		
x	4 <sup>3</sup> / <sub>8</sub>		

### Weight

Total weight	101 kg
--------------	--------

### Connections

Suction nozzle		Discharge nozzle	
DN 80		DN 80	
PN 16		PN 16	
EN1092-2		EN1092-2	
C	7 <sup>7</sup> / <sub>8</sub>	C	7 <sup>7</sup> / <sub>8</sub>
D	7 <sup>7</sup> / <sub>8</sub>	D	7 <sup>7</sup> / <sub>8</sub>
df	5 <sup>3</sup> / <sub>16</sub>	df	5 <sup>3</sup> / <sub>16</sub>
DN	3 <sup>1</sup> / <sub>8</sub>	DN	3 <sup>1</sup> / <sub>8</sub>
K	6 <sup>5</sup> / <sub>16</sub>	K	6 <sup>5</sup> / <sub>16</sub>
L	8 x 19	L	8 x 19



### Dimensions and weight without obligation

Project	Xylect-20185360
Block	LNEE 80-160/40/P46PCC4

Created by  
Created on 1/13/2025

Last update 1/13/2025