

# LNES 100-160/185/P26PCC4

## Technical data

Company name  
Contact  
Phone number  
e-mail address

Operating data				
1	Pumpe type	Single head pump	Fluid	Water
2	No. of pumps	1	Operating temperature at t A	°F 39.2
3	Nominal flow	US g.p.m. 0	Max / Min Operating Temperature mech. Seal	°F 120 / -25
4	Nominal head	ft 0	pH-value at t A	7
5	Static head	ft 0	Density at t A	lb/ft <sup>3</sup> 62.4
6	Inlet pressure	psi 0	Kin. viscosity at t A	ft <sup>2</sup> /s 1.689E-5
7	Environmental temperature	°F 68	Vapor pressure at t A	psi 14.5
8	Available system NPSH	ft 0	Altitude	0

Pump data				
9	Lubrication	Standard, Grease lubrication [Std]		
10	Execution			
11	Design	In-line	Impeller Ø	Max. inch 6 15/16
12	Operating speed	3500 rpm	Stages	1
13	Suction nozzle	DN 100 / PN 16 / EN1092-2		designed inch 5 11/16
14	Discharge nozzle	DN 100 / PN 16 / EN1092-2		Min. inch 5 11/16
15	Max. casing pressure	psi	Flow	Nominal US g.p.m.
16	Max. working pressure	psi 52.8		Max- US g.p.m. 1047.9
17	Impeller type	Radial impeller		Min- US g.p.m. 233.4
18	Head H(Q=0)	ft 120	Head	Nominal ft
19	Max. shaft power	hp 24		at Qmax ft 55.4
20	Pump weight	kg	Shaft power	hp
21	Total weight	lb 399.5	Efficiency	%
			NPSH 3%	ft

Materials				
22		<b>Pump</b>	<b>Shaft Seal</b>	
23	Volute Casing	Cast iron	Single mechanical seal, without shaft sleeve	
24	Casing Cover	Cast iron	eMG12 - Ø28mm	BQ7EGG-WA
25	Impeller	Cast iron / ASTM Class 30	Mechanical seal diameter	1 1/8 inch
26	Stub shaft	Stainless steel / AISI 431	1. Rotating ring	Carbon graphite resin impregnated
27	Wear ring	Stainless steel / AISI 304	2. Stationary ring	SiC, silicon carbide, sintered press.less
28	Impeller Nut	Stainless steel	3. Secondary seal	Ethylene propylene rubber (EPDM)
29	Impeller washer	Stainless steel	4. Springs	CrNiMo - Steel
30	Impeller key	Stainless steel / AISI 316Ti	5. Others	EPDM - WRAS
31	PLUG	Stainless steel / AISI 316Ti	Gaskets of the pump	Ethylene propylene rubber (EPDM)
32	GASKET	Asbestos-free synthetic fiber AFM34		
33				
34				
35				
36				
37				
38				
39				
40				
41				

Motor data				
Electrical and dimensional data refer to IE3 motor				
42	Manufacturer	Lowara		
43	Specific design	IE3 3ph Flange Motor - Premium Efficiency		
44	Type	PLM 160 B5 18,5 kW		
45	Rated power	24.809 hp	Rated current	33.7 A
46	Nominal speed	3540 rpm	Rated voltage	380 V
47	Frame size	160	Service factor	1
48	Weight	lb 242.5	Degree of protection	IP55

Remarks				
49				
50				
50				
52				

# LNES 100-160/185/P26PCC4

## Performance curve

Company name  
Contact  
Phone number  
e-mail address

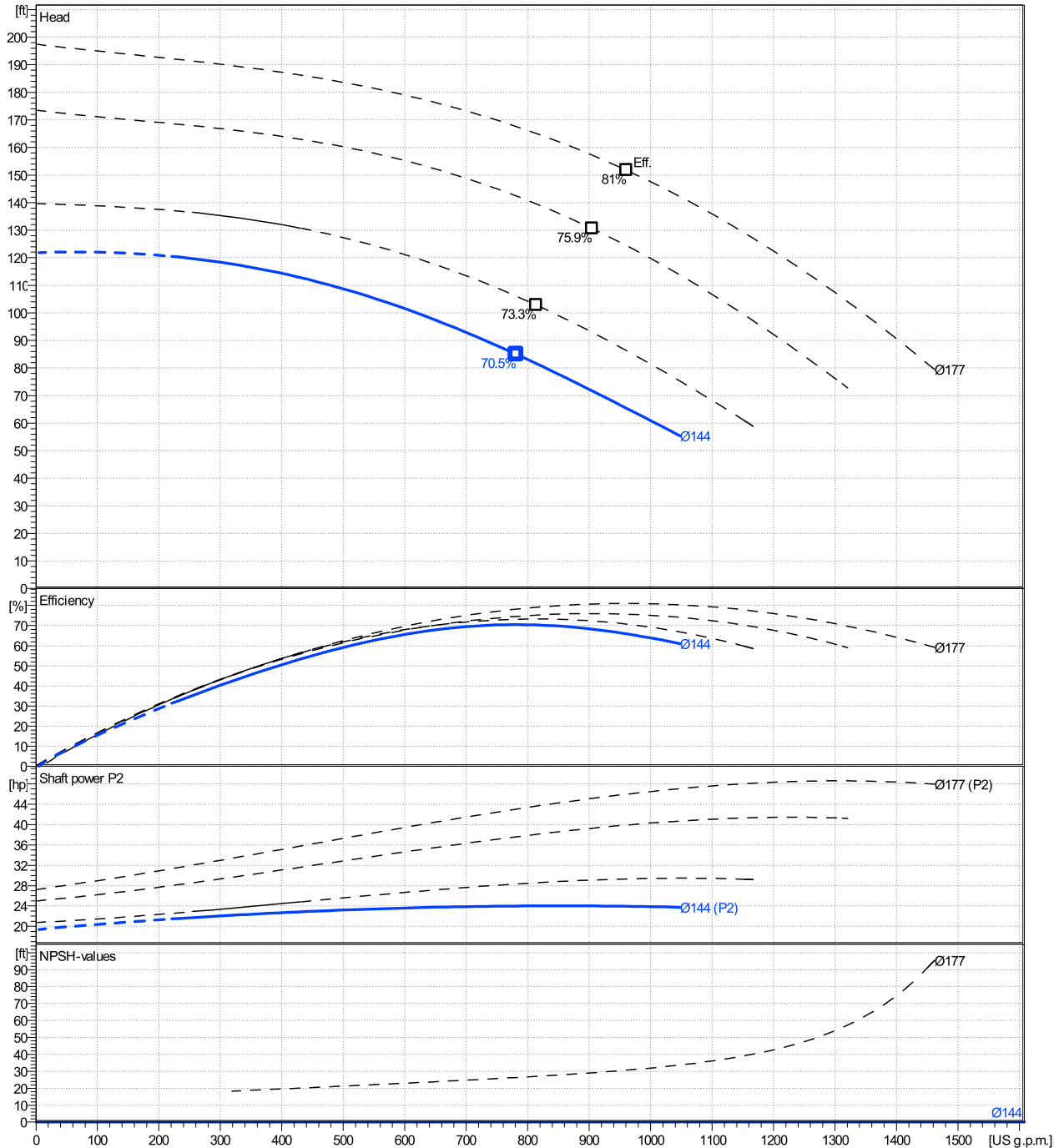
	Ø mm	Pump capacity			Pump head		Shaft power P2			Frequency		Hz	60
		Operating range Min. US g.p.m.	Max. US g.p.m.	η Max. US g.p.m.	H(Q=0) ft	η Max. ft	P2(Q=0) hp	Max. hp	η Max. hp	Operating speed rpm	Nominal flow US g.p.m.		
actual	5 11/16	233	1050	781	122	85	24	24	24	24	Nominal head	ft	0
Min.	0	/	/	781	122	85	/	/	24	24	Inlet pressure	psi	0
Max.	6 15/16	/	/	961	197	152	/	/	46	46	Static head	ft	0

Power datas referred to:

hydr. Performance acceptance acc. To EN ISO 9906 Class Grade 3B

Water [100%]; 39.2°F; 62.4lb/ft³; 1.69E-5ft²/s

MEI: N.A. - according to Ecodesign Directive 2009/125/EC and Regulation (EU) No.547/2012



# LNES 100-160/185/P26PCC4

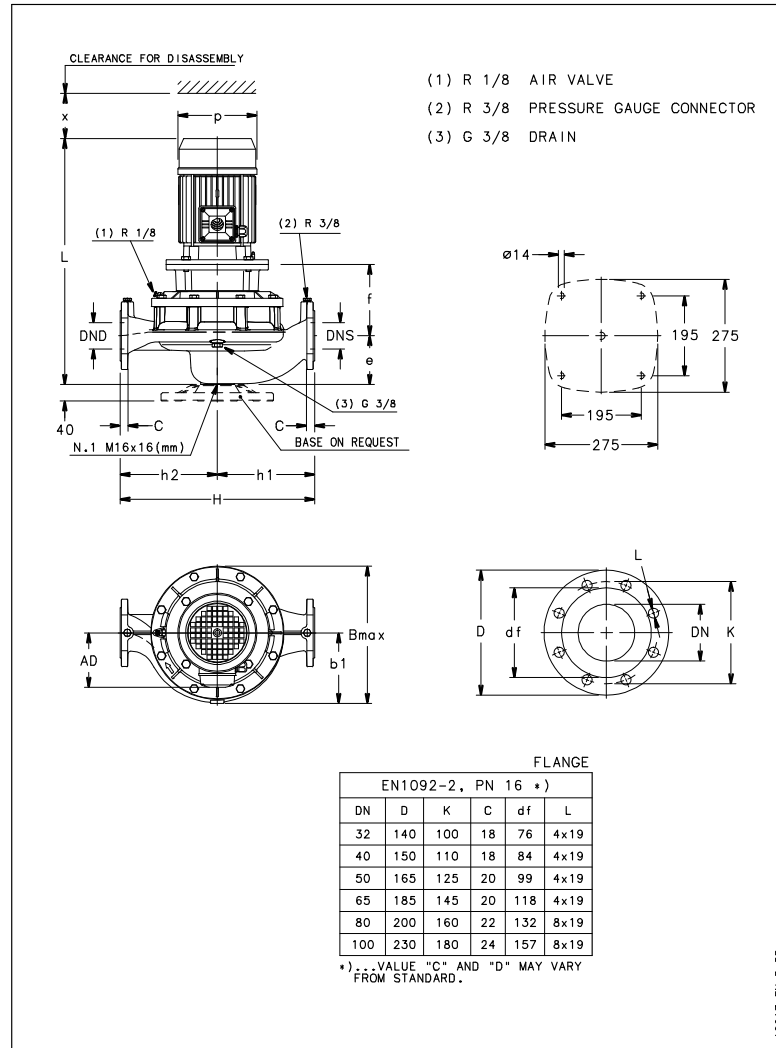
## Dimensions

Company name  
Contact  
Phone number  
e-mail address

Rigid coupling

PLM 160 B5 18,5 kW

Electrical and dimensional data refer to IE3 motor



### Dimensions [ inch ]

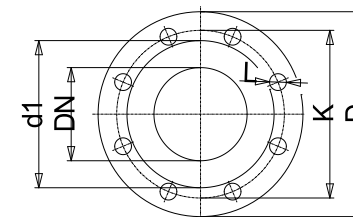
AD	9 <sup>7</sup> / <sub>16</sub>
b1	6 <sup>3</sup> / <sub>4</sub>
Bmax	13 <sup>11</sup> / <sub>16</sub>
DNd	3 <sup>15</sup> / <sub>16</sub>
DNS	3 <sup>15</sup> / <sub>16</sub>
e	5 <sup>1</sup> / <sub>2</sub>
f	9 <sup>7</sup> / <sub>16</sub>
H	19 <sup>11</sup> / <sub>16</sub>
h1	10 <sup>1</sup> / <sub>4</sub>
h2	9 <sup>7</sup> / <sub>16</sub>
L	34 <sup>7</sup> / <sub>16</sub>
p	12 <sup>5</sup> / <sub>16</sub>
x	4 <sup>13</sup> / <sub>16</sub>

### Weight

Total weight	181.2 kg
--------------	----------

### Connections

Suction nozzle		Discharge nozzle	
DN 100		DN 100	
PN 16		PN 16	
EN1092-2		EN1092-2	
C	1 <sup>5</sup> / <sub>16</sub>	C	1 <sup>5</sup> / <sub>16</sub>
D	9 <sup>1</sup> / <sub>16</sub>	D	9 <sup>1</sup> / <sub>16</sub>
df	6 <sup>3</sup> / <sub>16</sub>	df	6 <sup>3</sup> / <sub>16</sub>
DN	3 <sup>15</sup> / <sub>16</sub>	DN	3 <sup>15</sup> / <sub>16</sub>
K	7 <sup>1</sup> / <sub>16</sub>	K	7 <sup>1</sup> / <sub>16</sub>
L	8 x 19	L	8 x 19



Value C, D may vary from Standard

### Dimensions and weight without obligation

Project Xlect-20070985  
Block LNES 100-160/55/P46PCC4

Created by  
Created on 1/19/2025

Last update 1/19/2025