

# LNES 100-160/22/P46PCC4

## Technical data

Company name  
Contact  
Phone number  
e-mail address

Operating data					
1	Pumpe type	Single head pump		Fluid	Water
2	No. of pumps	1		Operating temperature t A	°F 39.2
3	Nominal flow	US g.p.m.	0	Max / Min Operating Temperature mech. Seal	°F 120 / -25
4	Nominal head	ft	0	pH-value at t A	7
5	Static head	ft	0	Density at t A	lb/ft <sup>3</sup> 62.4
6	Inlet pressure	psi	0	Kin. viscosity at t A	ft <sup>2</sup> /s 1.689E-5
7	Environmental temperature	°F	68	Vapor pressure at t A	psi 14.5
8	Available system NPSH	ft	0	Altitude	0

Pump data					
9	Lubrication	Standard, Grease lubrication [Std]			
10	Execution				
11	Design	In-line		Impeller Ø	Max. inch 6 15/16
12	Operating speed	1750 rpm	Stages 1		designed inch 5 11/16
13	Suction nozzle	DN 100 / PN 16 / EN1092-2			Min. inch 5 11/16
14	Discharge nozzle	DN 100 / PN 16 / EN1092-2		Flow	Nominal US g.p.m.
15	Max. casing pressure	psi			Max- US g.p.m. 550.4
16	Max. working pressure	psi	13.1	Min- US g.p.m. 118.9	
17	Impeller type	Radial impeller		Head	Nominal ft
18	Head H(Q=0)	ft	30		at Qmax ft 12
19	Max. shaft power	hp	3.1		at Qmin ft 29.3
20	Pump weight	kg		Shaft power	hp
21	Total weight	lb	211.6	Efficiency	%
				NPSH 3%	ft

Materials					
22		Pump		Shaft Seal	
23	Volute Casing	Cast iron		Single mechanical seal, without shaft sleeve	
24	Casing Cover	Cast iron		eMG12 - Ø28mm	BQ7EGG-WA
25	Impeller	Cast iron / ASTM Class 30		Mechanical seal diameter	1 1/8 inch
26	Stub shaft	Stainless steel / AISI 431		1. Rotating ring	Carbon graphite resin impregnated
27	Wear ring	Stainless steel / AISI 304		2. Stationary ring	SiC, silicon carbide, sintered press.less
28	Impeller Nut	Stainless steel		3. Secondary seal	Ethylene propylene rubber (EPDM)
29	Impeller washer	Stainless steel		4. Springs	CrNiMo - Steel
30	Impeller key	Stainless steel / AISI 316Ti		5. Others	EPDM - WRAS
31	PLUG	Stainless steel / AISI 316Ti		Gaskets of the pump	Ethylene propylene rubber (EPDM)
32	GASKET	Asbestos-free synthetic fiber AFM34			
33					
34					
35					
36					
37					
38					
39					
40					
41					

Motor data					
Electrical and dimensional data refer to IE3 motor					
42	Manufacturer	Lowara			
43	Specific design	IE3 3ph Flange Motor - Premium Efficiency			
44	Type	PLM 100 B5 2,2 kW			
45	Rated power	2.9502 hp	Rated current	8.19 A	
46	Nominal speed	1740 rpm	Rated voltage	220 V	
47	Frame size	100	Service factor	1	
48	Weight	lb 70.5	Degree of protection	IP55	

Remarks					
49					
50					
50					
52					

# LNES 100-160/22/P46PCC4

## Performance curve

Company name  
Contact  
Phone number  
e-mail address

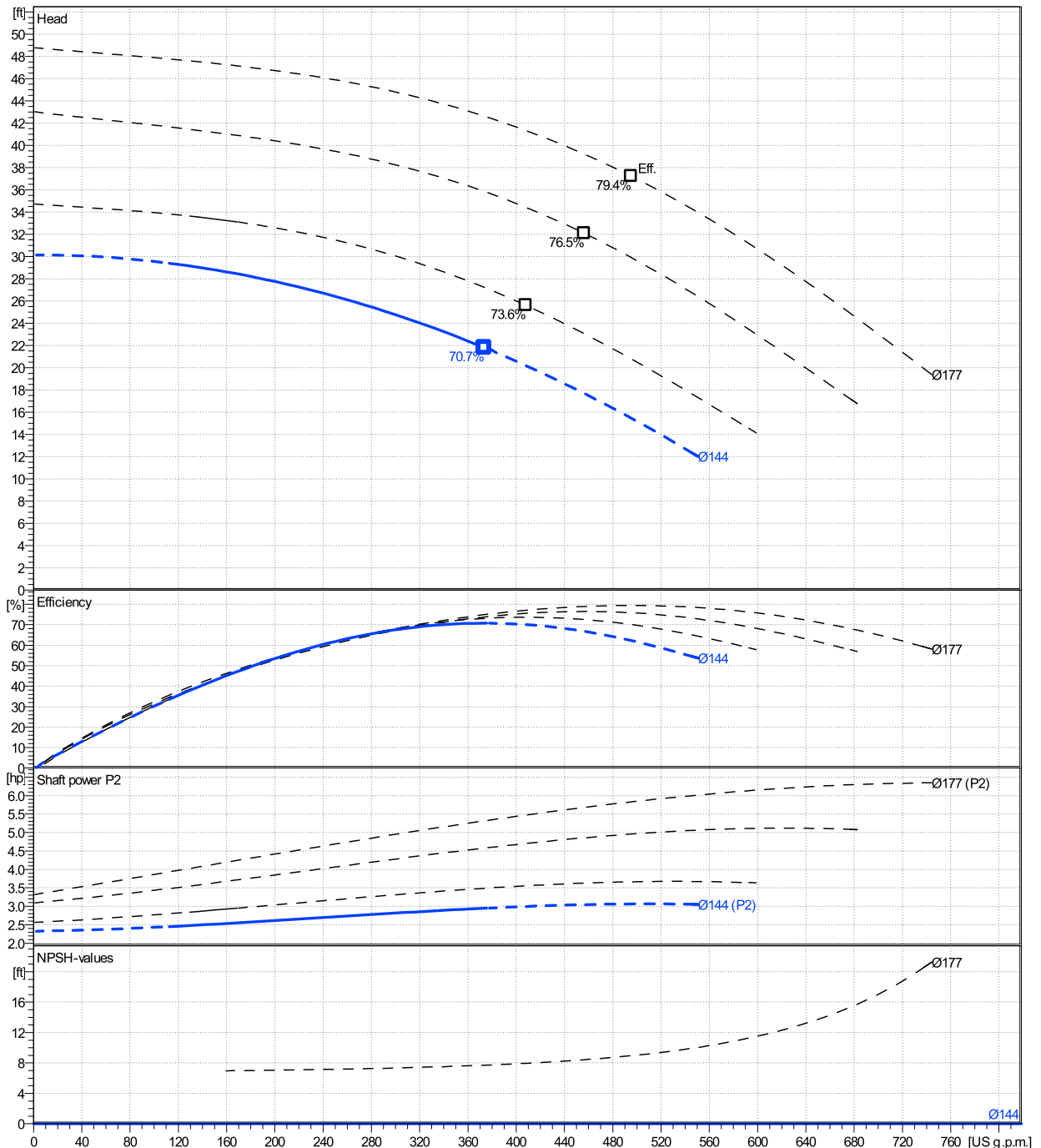
	Ø mm	Pump capacity			Pump head		Shaft power P2			Frequency	Hz	
		Operating range Min. US g.p.m.	Max. US g.p.m.	η Max. US g.p.m.	H(Q=0) ft	η Max. ft	P2(Q=0) hp	Max. hp	η Max. hp	Operating speed	rpm	
actual	5 11/16	119	375	373	30.1	21.8		3.07	2.95	Nominal flow	US g.p.m.	0
Min.	0	/	/	373	30.1	21.8		/	2.95	Nominal head	ft	0
Max.	6 15/16	/	/	495	48.8	37.2		/	5.83	Inlet pressure	psi	0
										Static head	ft	0

**Power datas referred to:**

**hydr. Performance acceptance acc. To EN ISO 9906 Class Grade 3B**

Water [100%] ; 39.2°F; 62.4lb/ft³; 1.69E-5ft²/s

MEI: N.A - according to Ecodesign Directive 2009/125/EC and Regulation (EU) No.547/2012



# LNES 100-160/22/P46PCC4

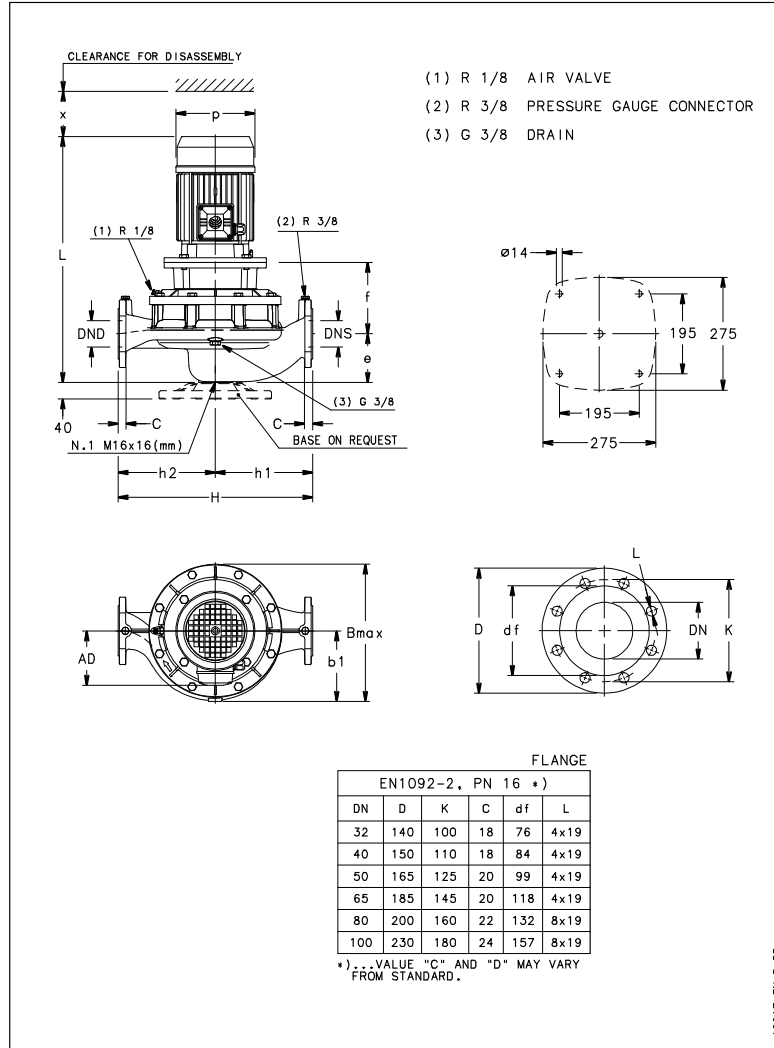
## Dimensions

Company name  
Contact  
Phone number  
e-mail address

Rigid coupling

PLM 100 B5 2,2 kW

Electrical and dimensional data refer to IE3 motor



### Dimensions [ inch ]

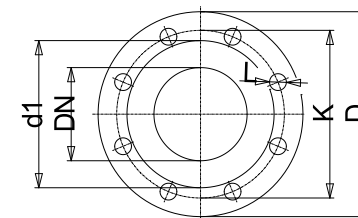
AD	9 <sup>7</sup> / <sub>16</sub>
b1	6 <sup>3</sup> / <sub>4</sub>
Bmax	13 <sup>11</sup> / <sub>16</sub>
DNd	3 <sup>15</sup> / <sub>16</sub>
DNS	3 <sup>15</sup> / <sub>16</sub>
e	5 <sup>1</sup> / <sub>2</sub>
f	7 <sup>5</sup> / <sub>16</sub>
H	19 <sup>11</sup> / <sub>16</sub>
h1	10 <sup>1</sup> / <sub>4</sub>
h2	9 <sup>7</sup> / <sub>16</sub>
L	25 <sup>1</sup> / <sub>2</sub>
p	8 <sup>7</sup> / <sub>16</sub>
x	4 <sup>13</sup> / <sub>16</sub>

### Weight

Total weight	96 kg
--------------	-------

### Connections

Suction nozzle		Discharge nozzle	
DN 100		DN 100	
PN 16		PN 16	
EN1092-2		EN1092-2	
C	1 <sup>5</sup> / <sub>16</sub>	C	1 <sup>5</sup> / <sub>16</sub>
D	9 <sup>1</sup> / <sub>16</sub>	D	9 <sup>1</sup> / <sub>16</sub>
df	6 <sup>3</sup> / <sub>16</sub>	df	6 <sup>3</sup> / <sub>16</sub>
DN	3 <sup>15</sup> / <sub>16</sub>	DN	3 <sup>15</sup> / <sub>16</sub>
K	7 <sup>1</sup> / <sub>16</sub>	K	7 <sup>1</sup> / <sub>16</sub>
L	8 x 19	L	8 x 19



Value C, D may vary from Standard

### Dimensions and weight without obligation

Project Xylect-20070985  
Block LNES 100-160/55/P46PCC4

Created by  
Created on 1/19/2025

Last update 1/19/2025