

LNES 125-200/15/W65RCC4

Technical data

Company name
Contact
Phone number
e-mail address

Operating data					
1	Pumpe type	Single head pump		Fluid	Water
2	No. of pumps	1		Operating temperature t A	°C 4
3	Nominal flow	m³/h	0	Max / Min Operating Temperature mech. Seal	°C 120 / -25
4	Nominal head	m	0	pH-value at t A	7
5	Static head	m	0	Density at t A	kg/m³ 1000
6	Inlet pressure	kPa	0	Kin. viscosity at t A	mm²/s 1.569
7	Environmental temperature	°C	20	Vapor pressure at t A	kPa 100
8	Available system NPSH	m	0	Altitude	0

Pump data					
9	Lubrication	32			
10	Execution	without support foot			
11	Design	In-line			
12	Operating speed	950 rpm	Stages	1	
13	Suction nozzle	DN125 /	PN10/16 /	EN1092-2	
14	Discharge nozzle	DN125 /	PN10/16 /	EN1092-2	
15	Max. casing pressure	kPa	1600		
16	Max. working pressure	kPa	56.9		
17	Impeller type	Radial impeller			
18	Head H(Q=0)	m	5.8		
19	Max. shaft power	kW	1.4		
20	Pump weight	kg			
21	Total weight	kg	116.0		

	Impeller Ø	Flow	Head	Shaft power		Efficiency	NPSH 3%
				kW	%		
Max. designed	mm	mm	mm				
Min.	mm	mm	mm				
Nominal		m³/h	m				
Max-		m³/h	m				
Min-		m³/h	m				
at Qmax			m				
at Qmin			m				

Materials					
Pump			Shaft Seal		
23	Impeller	Cast iron, 0.6020		Single mechanical seal, without shaft sleeve	
24	Casing	Cast iron, 0.6025		eMG12 - Ø38mm	BQ7EGG-WA
25	casing cover	Cast iron, 0.6025		Mechanical seal diameter	38 mm
26	Wear ring	stainless steel, 1.4301 (1.4408)		1. Rotating ring	Carbon graphite resin impregnated
27	Shaft	Stainless steel, 1.4057		2. Stationary ring	SiC, silicon carbide, sintered press.less
28	O-ring	EPDM		3. Secondary seal	Ethylene propylene rubber (EPDM)
29	Bearing frame	Cast iron, 0.6025		4. Springs	CrNiMo - Steel
30				5. Others	EPDM - WRAS
31				Gaskets of the pump	Ethylene propylene rubber (EPDM)
32					
33					
34					
35					
36					
37					
38					
39					
40					
41					

Motor data					
Electrical and dimensional data refer to IE3 motor					
42	Manufacturer	WEG			
43	Specific design	IE3 3ph Flange Motor - W22 - Premium Efficiency			
44	Type	W22 100 L B5 1,5 kW			
45	Rated power	1.5 kW	Rated current	3.7 A	
46	Nominal speed	955 rpm	Rated voltage	400 V	
47	Frame size	100 L	Service factor	1	
48	Weight	kg 32.0	Degree of protection	IP55	

Remarks					
49					
50					
50					
52					

LNES 125-200/15/W65RCC4

Performance curve

Company name
Contact
Phone number
e-mail address

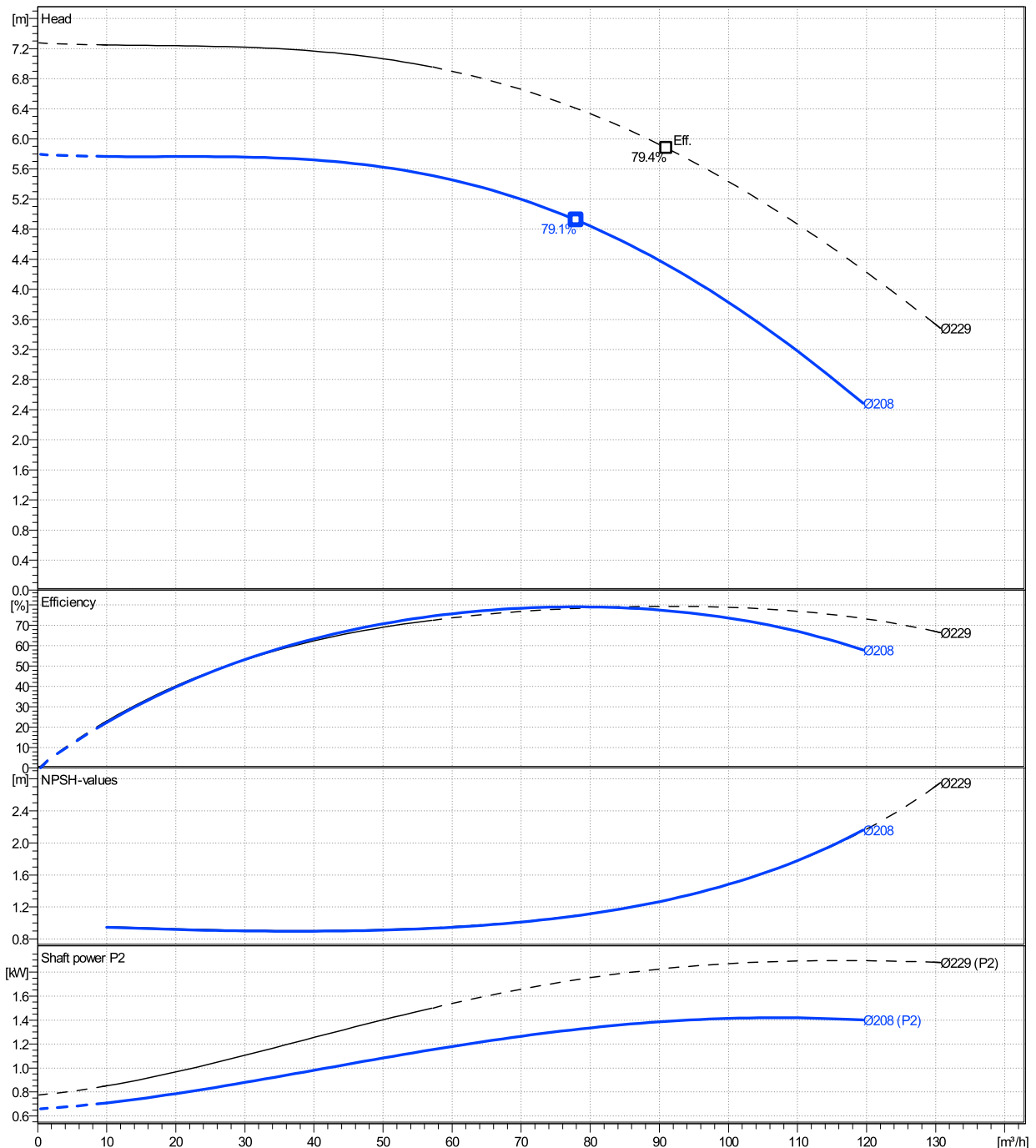
	Ø mm	Pump capacity Operating range			Pump head		Shaft power P2			Frequency		Hz
		Min. m³/h	Max. m³/h	η Max. m³/h	H(Q=0) m	η Max. m	P2(Q=0) kW	Max. kW	η Max. kW	Operating speed	rpm	
actual	208	10	120	78	5.8	4.92	1.42	1.32		Nominal flow	m³/h	0
Min.	0	/	/	78	5.8	4.92	/	1.32		Nominal head	m	0
Max.	229	/	/	91	7.28	5.88	/	1.83		Inlet pressure	kPa	0
										Static head	m	0

Power datas referred to:

hydr. Performance acceptance acc. To EN ISO 9906 Class Grade 3B

Water [100%] ; 4°C; 1000kg/m³; 1.57mm²/s

MEI: >=0,70 - according to Ecodesign Directive 2009/125/EC and Regulation (EU) No.547/2012



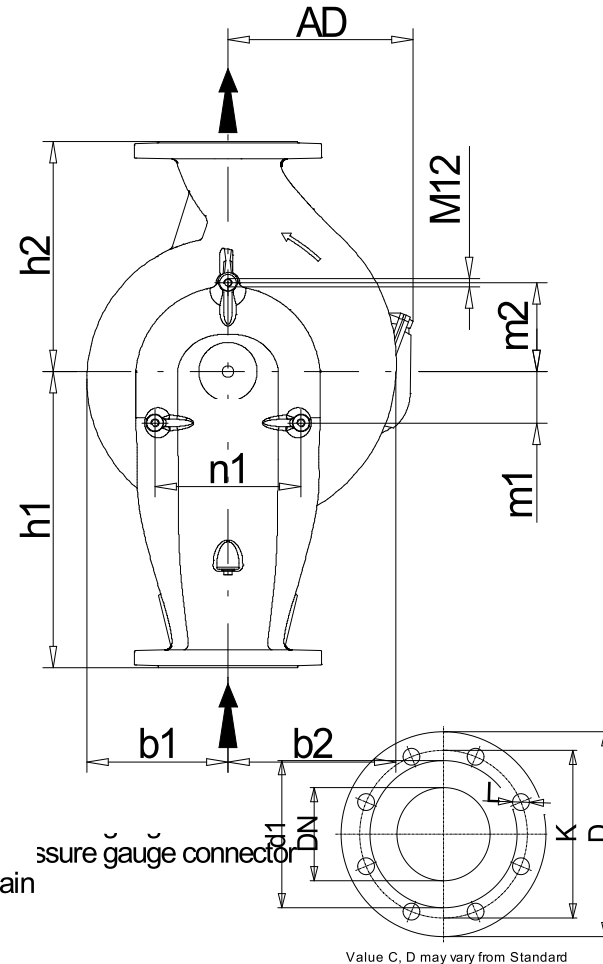
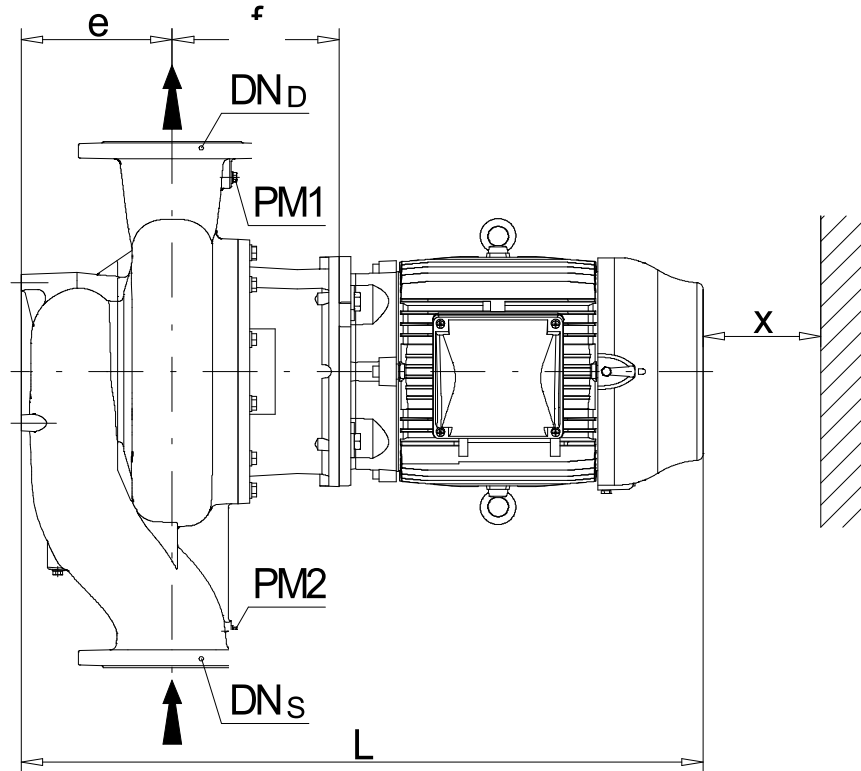
LNES 125-200/15/W65RCC4

Dimensions

Company name
Contact
Phone number
e-mail address

Rigid coupling
without support foot
W22 100 L B5 1,5 kW

Electrical and dimensional data refer to IE3 motor



Dimensions		[mm]	
AD	167		
b1	166		
b2	212		
DNd	125		
DNs	125		
e	215		
E	3/8"		
f	183		
H	620		
h1	340		
h2	280		
L	714		
m1	60		
m2	105		
n1	172		
PM1	1/4"		
PM2	3/8"		
Type	A		
x	140		

Weight	
Total weight	116 kg

Connections			
Suction nozzle		Discharge nozzle	
DN125		DN125	
PN10/16		PN10/16	
EN1092-2		EN1092-2	
C	26	C	26
D	255	D	255
d1	184	d1	184
K	210	K	210
L	19	L	19
z	8	z	8

Dimensions and weight without obligation

Project	Xylect-20128214	Created by		Last update	12/21/2024
Block	LNES 125-200/75/P45VCC4	Created on	12/21/2024		