

LNES 150-250/150/P45VCC4

Technical data

Company name
Contact
Phone number
e-mail address

Operating data				
1	Pumpe type	Single head pump	Fluid	Water
2	No. of pumps	1	Operating temperature t A	°C 4
3	Nominal flow	m³/h 0	Max / Min Operating Temperature mech. Seal	°C 120 / -25
4	Nominal head	m 0	pH-value at t A	7
5	Static head	m 0	Density at t A	kg/m³ 1000
6	Inlet pressure	kPa 0	Kin. viscosity at t A	mm²/s 1.569
7	Environmental temperature	°C 20	Vapor pressure at t A	kPa 100
8	Available system NPSH	m 0	Altitude	0

Pump data					
9	Lubrication	32			
10	Execution	with support foot			
11	Design	In-line			
12	Operating speed	1470 rpm	Stages	1	
13	Suction nozzle	DN150 / PN10/16 / EN1092-2	Impeller Ø	Max. designed	mm 259
14	Discharge nozzle	DN150 / PN10/16 / EN1092-2		Min.	mm 235
15	Max. casing pressure	kPa 1600	Flow	Nominal	m³/h
16	Max. working pressure	kPa 216		Max-	m³/h 360
17	Impeller type	Radial impeller	Head	Min-	m³/h 40
18	Head H(Q=0)	m 22		Nominal	m
19	Max. shaft power	kW 14.8	Shaft power	at Qmax	m 9.4
20	Pump weight	kg		at Qmin	m 21.9
21	Total weight	kg 265.0	Efficiency	%	
			NPSH 3%	m	

Materials				
22		Pump	Shaft Seal	
23	Impeller	Cast iron, 0.6020	Single mechanical seal, without shaft sleeve	
24	Casing	Cast iron, 0.6025	eMG12 - Ø38mm	BQ7EGG-WA
25	casing cover	Cast iron, 0.6025	Mechanical seal diameter	38 mm
26	Wear ring	stainless steel, 1.4301 (1.4408)	1. Rotating ring	Carbon graphite resin impregnated
27	Shaft	Stainless steel, 1.4057	2. Stationary ring	SiC, silicon carbide, sintered press.less
28	O-ring	EPDM	3. Secondary seal	Ethylene propylene rubber (EPDM)
29	Bearing frame	Cast iron, 0.6025	4. Springs	CrNiMo - Steel
30			5. Others	EPDM - WRAS
31			Gaskets of the pump	Ethylene propylene rubber (EPDM)
32				
33				
34				
35				
36				
37				
38				
39				
40				
41				

Motor data				
Electrical and dimensional data refer to IE3 motor				
42	Manufacturer	Lowara		
43	Specific design	IE3 3ph Flange Motor - Premium Efficiency		
44	Type	PLM 160 B5 15 kW		
45	Rated power	15 kW	Rated current	30.7 A
46	Nominal speed	1470 rpm	Rated voltage	400 V
47	Frame size	160	Service factor	1
48	Weight	kg 128.5	Degree of protection	IP55

Remarks				
49				
50				
50				
52				

LNES 150-250/150/P45VCC4

Performance curve

Company name
Contact
Phone number
e-mail address

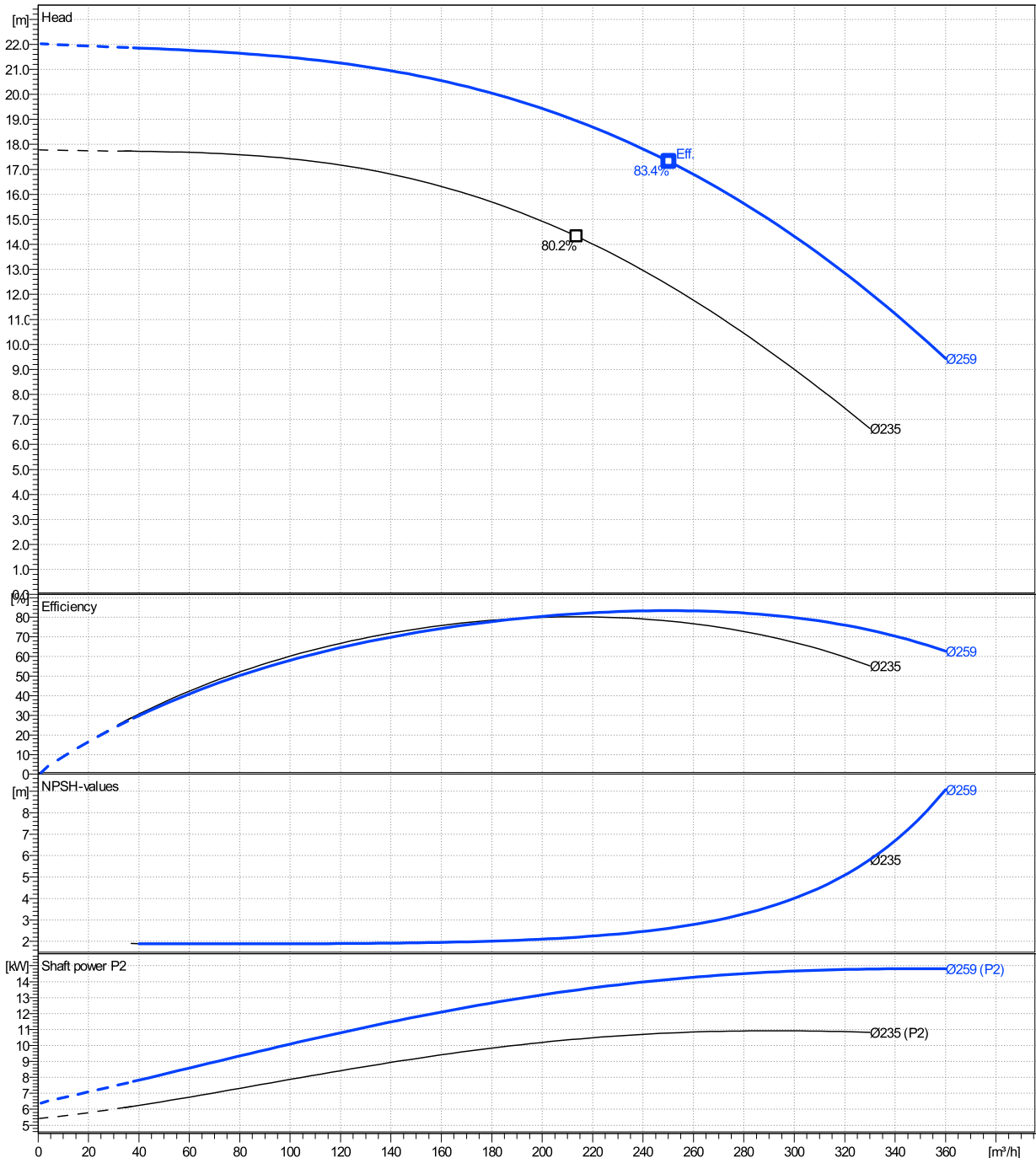
	Ø mm	Pump capacity Operating range			Pump head		Shaft power P2			Frequency	Hz	50
		Min. m³/h	Max. m³/h	η Max. m³/h	H(Q=0) m	η Max. m	P2(Q=0) kW	Max. kW	η Max. kW	Operating speed	rpm	1470
actual	259	40	360	250	22	17.3		14.8	14.1	Nominal flow	m³/h	0
Min.	0	/	/	214	17.8	14.3		/	10.4	Nominal head	m	0
Max.	259	/	/	250	22	17.3		/	14.1	Inlet pressure	kPa	0
										Static head	m	0

Power datas referred to:

hydr. Performance acceptance acc. To EN ISO 9906 Class Grade 3B

Water [100%]; 4°C; 1000kg/m³; 1.57mm²/s

MEI: >=0,70 - according to Ecodesign Directive 2009/125/EC and Regulation (EU) No.547/2012



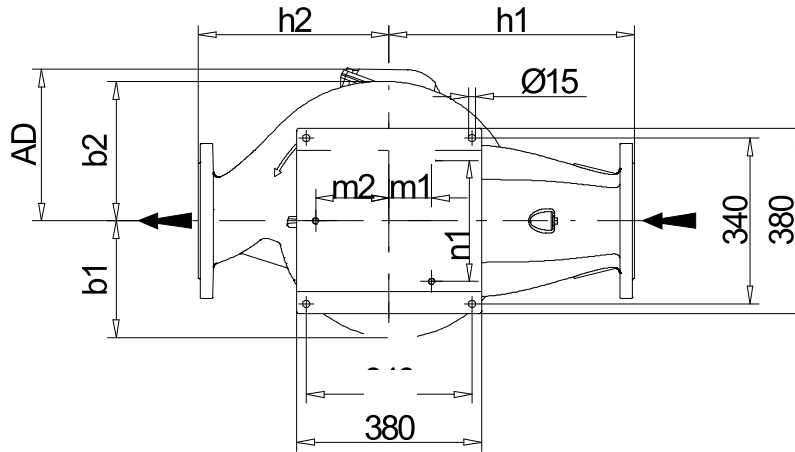
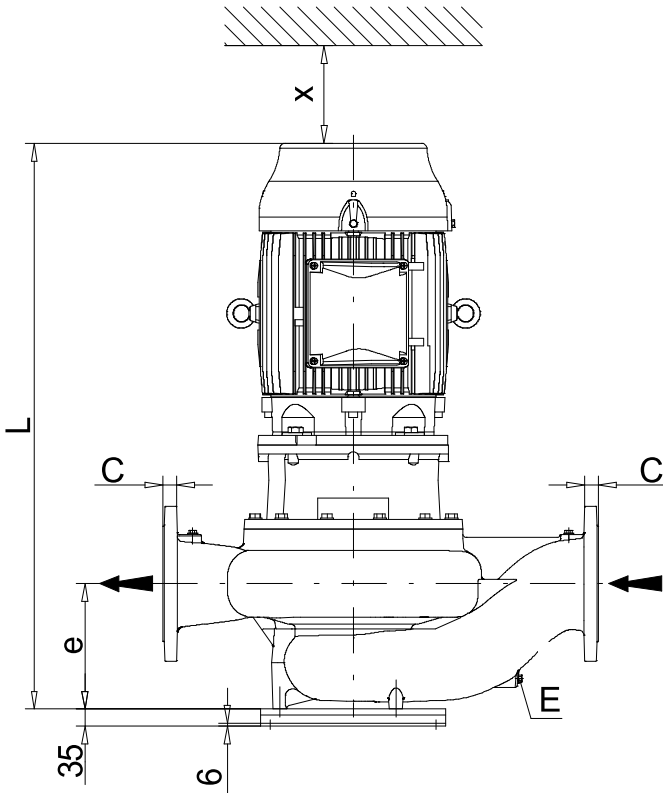
LNES 150-250/150/P45VCC4

Dimensions

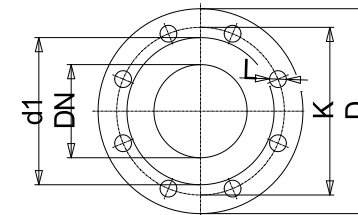
Company name
Contact
Phone number
e-mail address

Rigid coupling
with support foot
PLM 160 B5 15 kW

Electrical and dimensional data refer to IE3 motor



Pressure gauge connector
E...Drain



Value C, D may vary from Standard

Dimensions [mm]

AD	240
b1	193
b2	255
DNd	150
DNs	150
e	230
E	3/8"
f	240
H	800
h1	450
h2	350
L	964
m1	75
m2	130
n1	212
PM1	1/4"
PM2	3/8"
Type	B
x	140

Weight	
Total weight	265 kg

Connections			
Suction nozzle		Discharge nozzle	
DN150		DN150	
PN10/16		PN10/16	
EN1092-2		EN1092-2	
C	26	C	26
D	285	D	285
d1	211	d1	211
K	240	K	240
L	23	L	23
z	8	z	8

Dimensions and weight without obligation

Project	Xylect-20128214	Created by		Last update	12/21/2024
Block	LNES 150-250/150/P45VCC4	Created on	12/21/2024		