

# LNES 150-315/110/L65VCC4

## Technical data

Company name  
Contact  
Phone number  
e-mail address

Operating data					
1	Pumpe type	Single head pump		Fluid	Water
2	No. of pumps	1		Operating temperature t A	°C 4
3	Nominal flow	m <sup>3</sup> /h	0	Max / Min Operating Temperature mech. Seal	°C 120 / -25
4	Nominal head	m	0	pH-value at t A	7
5	Static head	m	0	Density at t A	kg/m <sup>3</sup> 1000
6	Inlet pressure	kPa	0	Kin. viscosity at t A	mm <sup>2</sup> /s 1.569
7	Environmental temperature	°C	20	Vapor pressure at t A	kPa 100
8	Available system NPSH	m	0	Altitude	0

Pump data					
9	Lubrication	42			
10	Execution	with support foot			
11	Design	In-line			
12	Operating speed	950 rpm	Stages	1	
13	Suction nozzle	DN150 /	PN10/16 /	EN1092-2	
14	Discharge nozzle	DN150 /	PN10/16 /	EN1092-2	
15	Max. casing pressure	kPa	1600		
16	Max. working pressure	kPa	164.8		
17	Impeller type	Radial impeller			
18	Head H(Q=0)	m	17		
19	Max. shaft power	kW	9.9		
20	Pump weight	kg			
21	Total weight	kg	294.5		
				NPSH 3%	m

Materials					
22		<b>Pump</b>		<b>Shaft Seal</b>	
23	Impeller	Cast iron, 0.6020		Single mechanical seal, without shaft sleeve	
24	Casing	Cast iron, 0.6025		eMG12 - Ø48mm	BQ7EGG-WA
25	casing cover	Cast iron, 0.6025		Mechanical seal diameter	48 mm
26	Wear ring	stainless steel, 1.4301 (1.4408)		1. Rotating ring	Carbon graphite resin impregnated
27	Shaft	Stainless steel, 1.4057		2. Stationary ring	SiC, silicon carbide, sintered press.less
28	O-ring	EPDM		3. Secondary seal	Ethylene propylene rubber (EPDM)
29	Bearing frame	Cast iron, 0.6025		4. Springs	CrNiMo - Steel
30				5. Others	EPDM - WRAS
31				Gaskets of the pump	Ethylene propylene rubber (EPDM)
32					
33					
34					
35					
36					
37					
38					
39					
40					
41					

Motor data					
Electrical and dimensional data refer to IE3 motor					
42	Manufacturer	Lowara			
43	Specific design	IE3 3ph Flange Motor - Premium Efficiency			
44	Type	3MAS 160 L B5 11 kW			
45	Rated power	11 kW	Rated current	23 A	
46	Nominal speed	975 rpm	Rated voltage	400 V	
47	Frame size	160 L	Service factor	1	
48	Weight	kg 103.5	Degree of protection	IP55	

Remarks					
49					
50					
50					
52					

# LNES 150-315/110/L65VCC4

## Performance curve

Company name  
Contact  
Phone number  
e-mail address

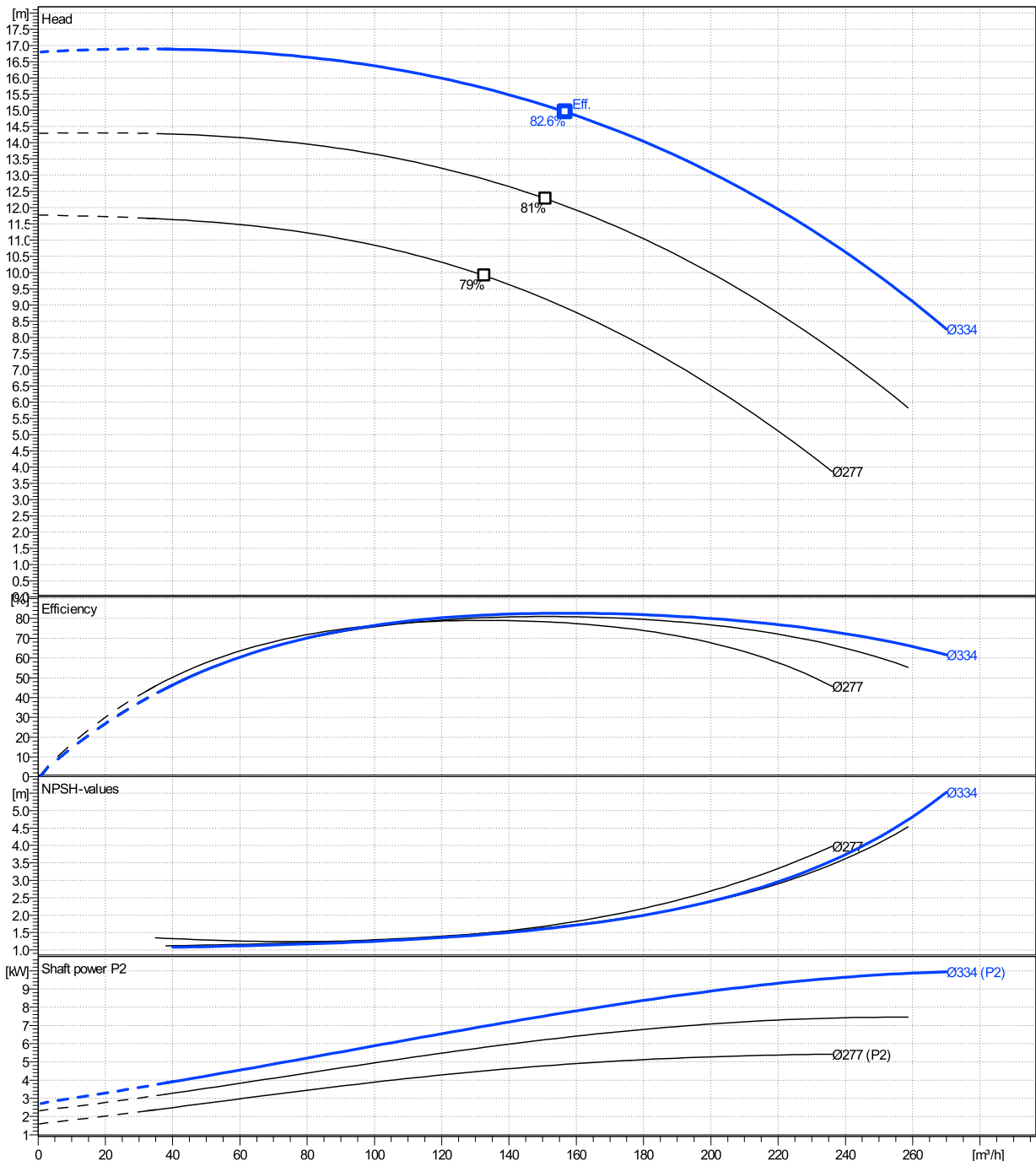
	Ø mm	Pump capacity			Pump head		Shaft power P2			Frequency	
		Operating range Min. m³/h	Max. m³/h	η Max. m³/h	H(Q=0) m	η Max. m	P2(Q=0) kW	Max. kW	η Max. kW	Hz	
actual	334	40	270	157	16.8	14.9	9.94	7.71		50	950
Min.	0	/	/	133	11.8	9.9	/	4.51			0
Max.	334	/	/	157	16.8	14.9	/	7.71			0
										Operating speed	rpm
										Nominal flow	m³/h
										Nominal head	m
										Inlet pressure	kPa
										Static head	m

Power datas referred to:

hydr. Performance acceptance acc. To EN ISO 9906 Class Grade 3B

Water [100%] ; 4°C; 1000kg/m³; 1.57mm²/s

MEI: >=0,70 - according to Ecodesign Directive 2009/125/EC and Regulation (EU) No.547/2012



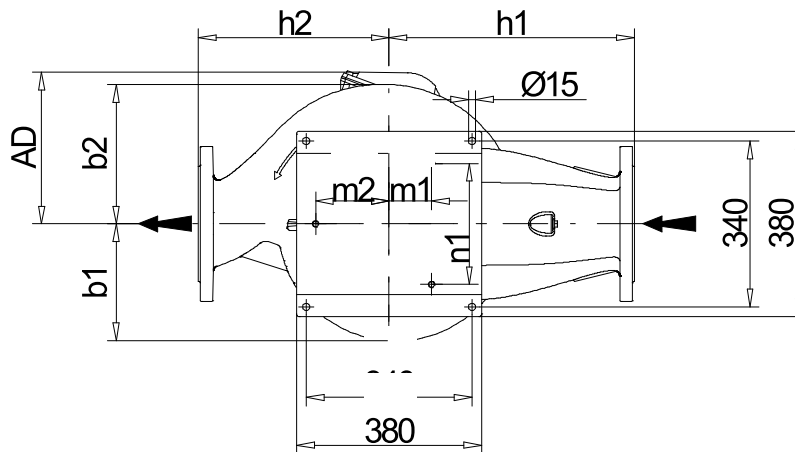
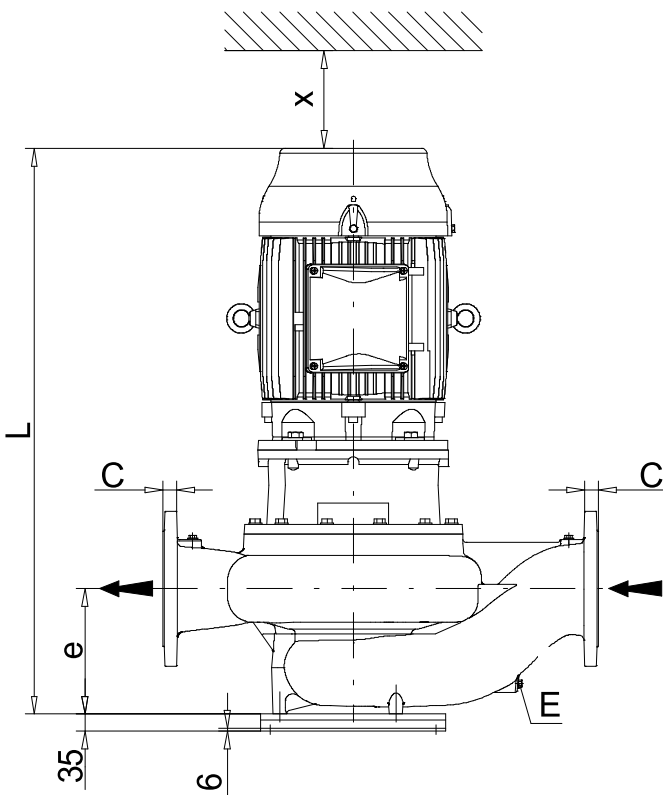
# LNES 150-315/110/L65VCC4

## Dimensions

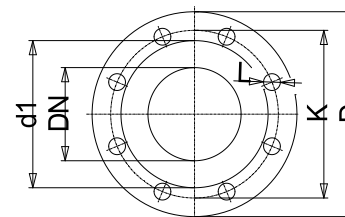
Company name  
Contact  
Phone number  
e-mail address

Rigid coupling  
with support foot  
3MAS 160 L B5 11 kW

Electrical and dimensional data refer to IE3 motor



Pressure gauge connector  
E...Drain



Value C, D may vary from Standard

Dimensions		[ mm ]	
AD	252		
b1	215		
b2	257		
DNd	150		
DNs	150		
e	230		
E	3/8"		
f	254		
H	800		
h1	450		
h2	350		
L	1029		
m1	78		
m2	135		
n1	222		
PM1	1/4"		
PM2	3/8"		
Type	A		
Type	B		
x	140		

Weight	
Total weight	294.5 kg

Connections			
Suction nozzle		Discharge nozzle	
DN150		DN150	
PN10/16		PN10/16	
EN1092-2		EN1092-2	
C	26	C	26
D	285	D	285
d1	211	d1	211
K	240	K	240
L	23	L	23
z	8	z	8

### Dimensions and weight without obligation

Project Xylect-20128214  
Block LNES 150-315/370/L45VCC4

Created by  
Created on 12/21/2024

Last update 12/21/2024