

LNES 200-250/220/L45VCC4

Technical data

Company name
Contact
Phone number
e-mail address

Operating data					
1	Pumpe type	Single head pump	Fluid	Water	
2	No. of pumps	1	Operating temperature t A	°C	4
3	Nominal flow	m³/h 0	Max / Min Operating Temperature mech. Seal	°C	120 / -25
4	Nominal head	m 0	pH-value at t A		7
5	Static head	m 0	Density at t A	kg/m³	1000
6	Inlet pressure	kPa 0	Kin. viscosity at t A	mm²/s	1.569
7	Environmental temperature	°C 20	Vapor pressure at t A	kPa	100
8	Available system NPSH	m 0	Altitude		0

Pump data					
9	Lubrication	42			
10	Execution	with support foot			
11	Design	In-line			
12	Operating speed	1470 rpm	Stages	1	
13	Suction nozzle	DN200 /	PN16 /	EN1092-2	
14	Discharge nozzle	DN200 /	PN16 /	EN1092-2	
15	Max. casing pressure	kPa 1600	Impeller Ø	Max.	mm 282
16	Max. working pressure	kPa 211.8		designed	mm 265
17	Impeller type	Radial impeller		Min.	mm 238
18	Head H(Q=0)	m 22	Flow	Nominal	m³/h
19	Max. shaft power	kW 21.4		Max-	m³/h 522.2
20	Pump weight	kg		Min-	m³/h 58.6
21	Total weight	kg 372.2	Head	Nominal	m
				at Qmax	m 8.9
			Shaft power	kW	
			Efficiency	%	
			NPSH 3%	m	

Materials					
22		Pump		Shaft Seal	
23	Impeller	Cast iron, 0.6020		Single mechanical seal, without shaft sleeve	
24	Casing	Cast iron, 0.6025		eMG12 - Ø48mm	BQ7EGG-WA
25	casing cover	Cast iron, 0.6025		Mechanical seal diameter	48 mm
26	Wear ring	stainless steel, 1.4301 (1.4408)		1. Rotating ring	Carbon graphite resin impregnated
27	Shaft	Stainless steel, 1.4057		2. Stationary ring	SiC, silicon carbide, sintered press.less
28	O-ring	EPDM		3. Secondary seal	Ethylene propylene rubber (EPDM)
29	Bearing frame	Cast iron, 0.6025		4. Springs	CrNiMo - Steel
30				5. Others	EPDM - WRAS
31				Gaskets of the pump	Ethylene propylene rubber (EPDM)
32					
33					
34					
35					
36					
37					
38					
39					
40					
41					

Motor data					
Electrical and dimensional data refer to IE3 motor					
42	Manufacturer	Lowara			
43	Specific design	IE3 3ph Flange Motor - Premium Efficiency			
44	Type	3MAS 180 L B5 22 kW			
45	Rated power	22 kW	Rated current	42.2 A	
46	Nominal speed	1470 rpm	Rated voltage	400 V	
47	Frame size	180 L	Service factor	1	
48	Weight	kg 154.2	Degree of protection	IP55	

Remarks					
49					
50					
50					
52					

LNES 200-250/220/L45VCC4

Performance curve

Company name
Contact
Phone number
e-mail address

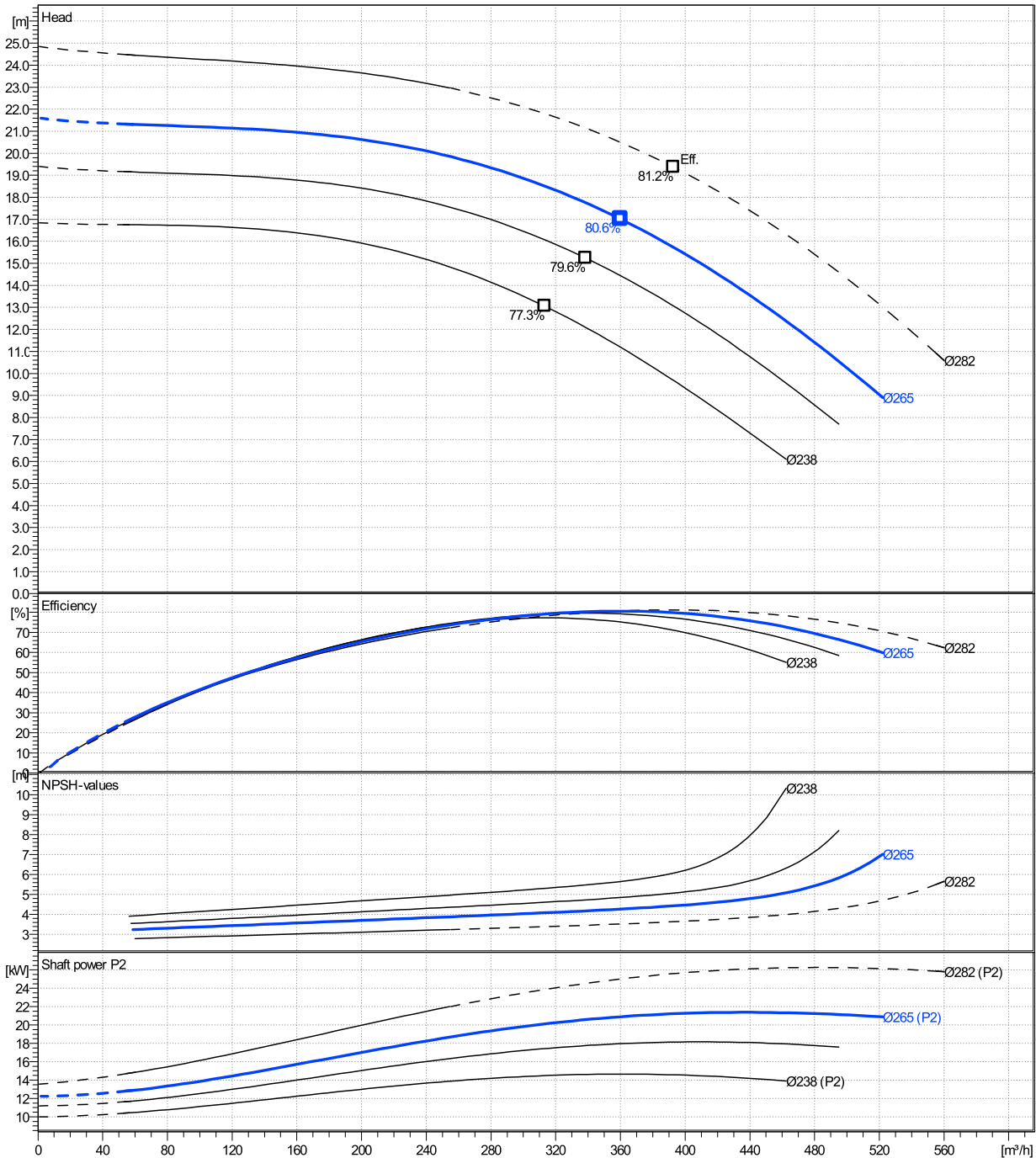
	Ø mm	Pump capacity			Pump head		Shaft power P2			Frequency	Hz	50
		Operating range Min. m³/h	Max. m³/h	η Max. m³/h	H(Q=0) m	η Max. m	P2(Q=0) kW	Max. kW	η Max. kW	Operating speed	rpm	1470
actual	265	58.6	522	360	21.6	17	21.4	20.9	Nominal flow	m³/h	0	
Min.	0	/	/	313	16.8	13.1	/	14.5	Nominal head	m	0	
Max.	282	/	/	393	24.8	19.4	/	25.6	Inlet pressure	kPa	0	
									Static head	m	0	

Power datas referred to:

hydr. Performance acceptance acc. To EN ISO 9906 Class Grade 3B

Water [100%] ; 4°C; 1000kg/m³; 1.57mm²/s

MEI: 0.49



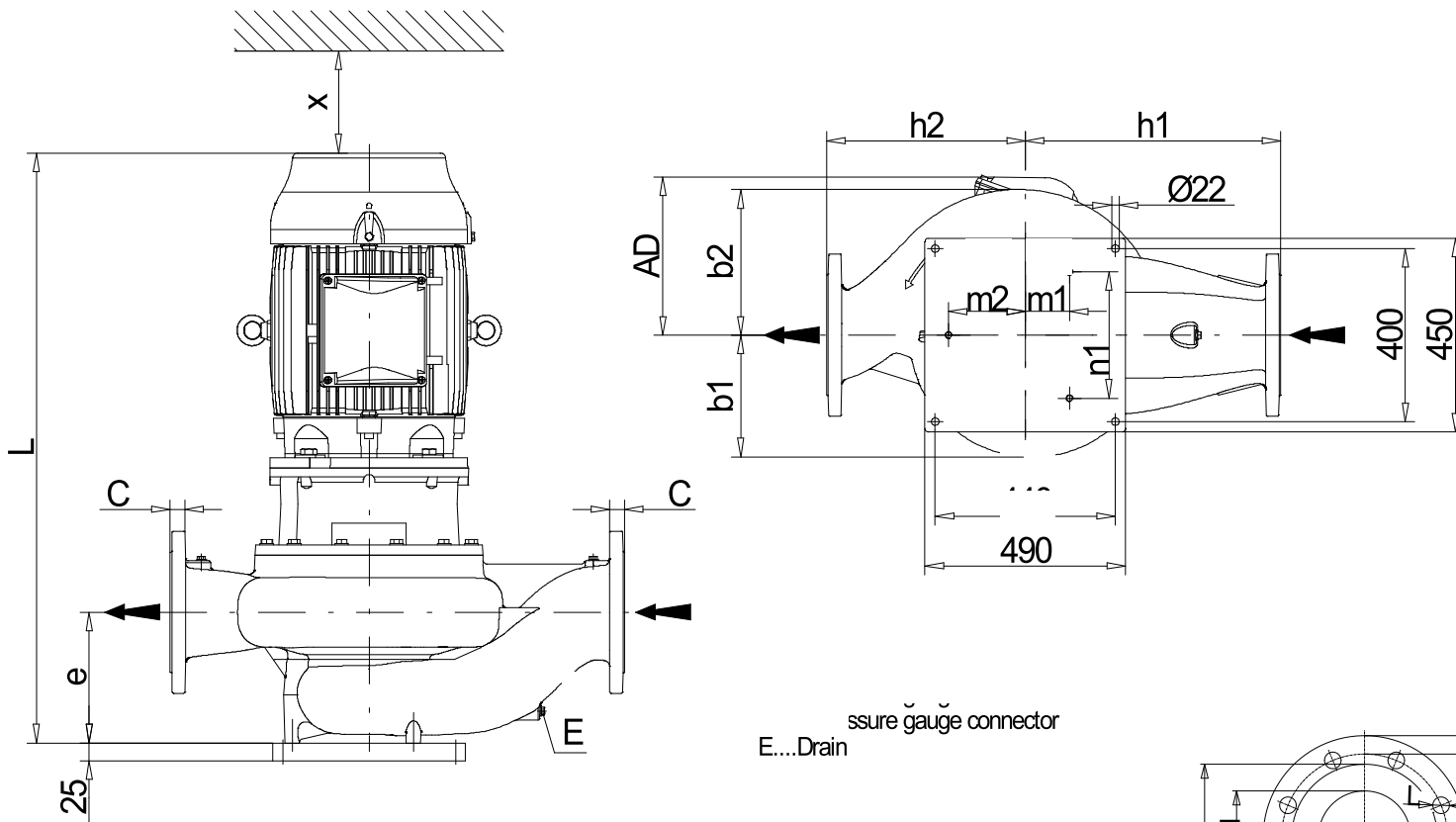
LNES 200-250/220/L45VCC4

Dimensions

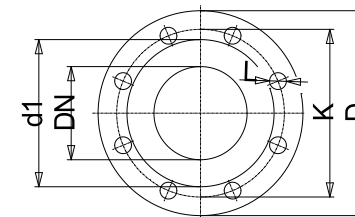
Company name
Contact
Phone number
e-mail address

Rigid coupling
with support foot
3MAS 180 L B5 22 kW

Electrical and dimensional data refer to IE3 motor



Pressure gauge connector
E....Drain



Value C, D may vary from Standard

Dimensions		[mm]	
AD	264		
b1	247		
b2	305		
DNd	200		
DNs	200		
E	1/2"		
e	308		
f	254		
H	830		
h1	475		
h2	355		
L	1153		
m1	73		
m2	145		
n1	250		
PM1	1/2"		
PM2	1/2"		
Type	C		
x	140		

Weight	
Total weight	372.2 kg

Connections			
Suction nozzle		Discharge nozzle	
DN200		DN200	
PN16		PN16	
EN1092-2		EN1092-2	
C	30	C	30
D	345	D	345
d1	266	d1	266
K	295	K	295
L	23	L	23
z	12	z	12

Dimensions and weight without obligation

Project Xylect-20128214
Block LNES 200-250/300/L45VCC4

Created by
Created on 12/21/2024

Last update 12/21/2024