

LNES 250-315/550/L46UDC4

Technical data

Company name
Contact
Phone number
e-mail address

Operating data					
1	Pumpe type	Single head pump		Fluid	Water
2	No. of pumps	1		Operating temperature t A	°F 39.2
3	Nominal flow	US g.p.m.	0	Max / Min Operating Temperature mech. Seal	°F 120 / -25
4	Nominal head	ft	0	pH-value at t A	7
5	Static head	ft	0	Density at t A	lb/ft ³ 62.4
6	Inlet pressure	psi	0	Kin. viscosity at t A	ft ² /s 1.689E-5
7	Environmental temperature	°F	68	Vapor pressure at t A	psi 14.5
8	Available system NPSH	ft	0	Altitude	0

Pump data					
9	Lubrication	42			
10	Execution	with support foot			
11	Design	In-line			
12	Operating speed	1780 rpm	Stages	1	
13	Suction nozzle	DN250 /	PN16 /	EN1092-2	
14	Discharge nozzle	DN250 /	PN16 /	EN1092-2	
15	Max. casing pressure	psi	232		
16	Max. working pressure	psi	43.3		
17	Impeller type	Radial impeller			
18	Head H(Q=0)	ft	100		
19	Max. shaft power	hp	71.2		
20	Pump weight	kg			
21	Total weight	lb	1,534.4		
				NPSH 3%	ft

Materials					
22		Pump		Shaft Seal	
23	Impeller	Cast iron, 0.6020		Single mechanical seal, without shaft sleeve	
24	Casing	ductile iron, 0.7040		eMG12 - Ø48mm	BQ7EGG-WA
25	casing cover	ductile iron, 0.7040		Mechanical seal diameter	1 7/8 inch
26	Wear ring	stainless steel, 1.4301 (1.4408)		1. Rotating ring	Carbon graphite resin impregnated
27	Shaft	Stainless steel, 1.4057		2. Stationary ring	SiC, silicon carbide, sintered press.less
28	O-ring	EPDM		3. Secondary seal	Ethylene propylene rubber (EPDM)
29	Bearing frame	Cast iron, 0.6025		4. Springs	CrNiMo - Steel
30				5. Others	EPDM - WRAS
31				Gaskets of the pump	Ethylene propylene rubber (EPDM)
32					
33					
34					
35					
36					
37					
38					
39					
40					
41					

Motor data					
Electrical and dimensional data refer to IE3 motor					
42	Manufacturer	Lowara			
43	Specific design	IE3 3ph Flange Motor - Premium Efficiency			
44	Type	3MGS 250 M B5 55 kW			
45	Rated power	73.756 hp	Rated current	101 A	
46	Nominal speed	1782 rpm	Rated voltage	380 V	
47	Frame size	250 M	Service factor	1	
48	Weight	lb 961.2	Degree of protection	IP55	

Remarks					
49					
50					
50					
52					

Project	Xylect-20070985	Created by		Last update	1/19/2025
Block	LNES 250-315/1100/L46UDC4	Created on	1/19/2025		

LNES 250-315/550/L46UDC4

Performance curve

Company name
Contact
Phone number
e-mail address

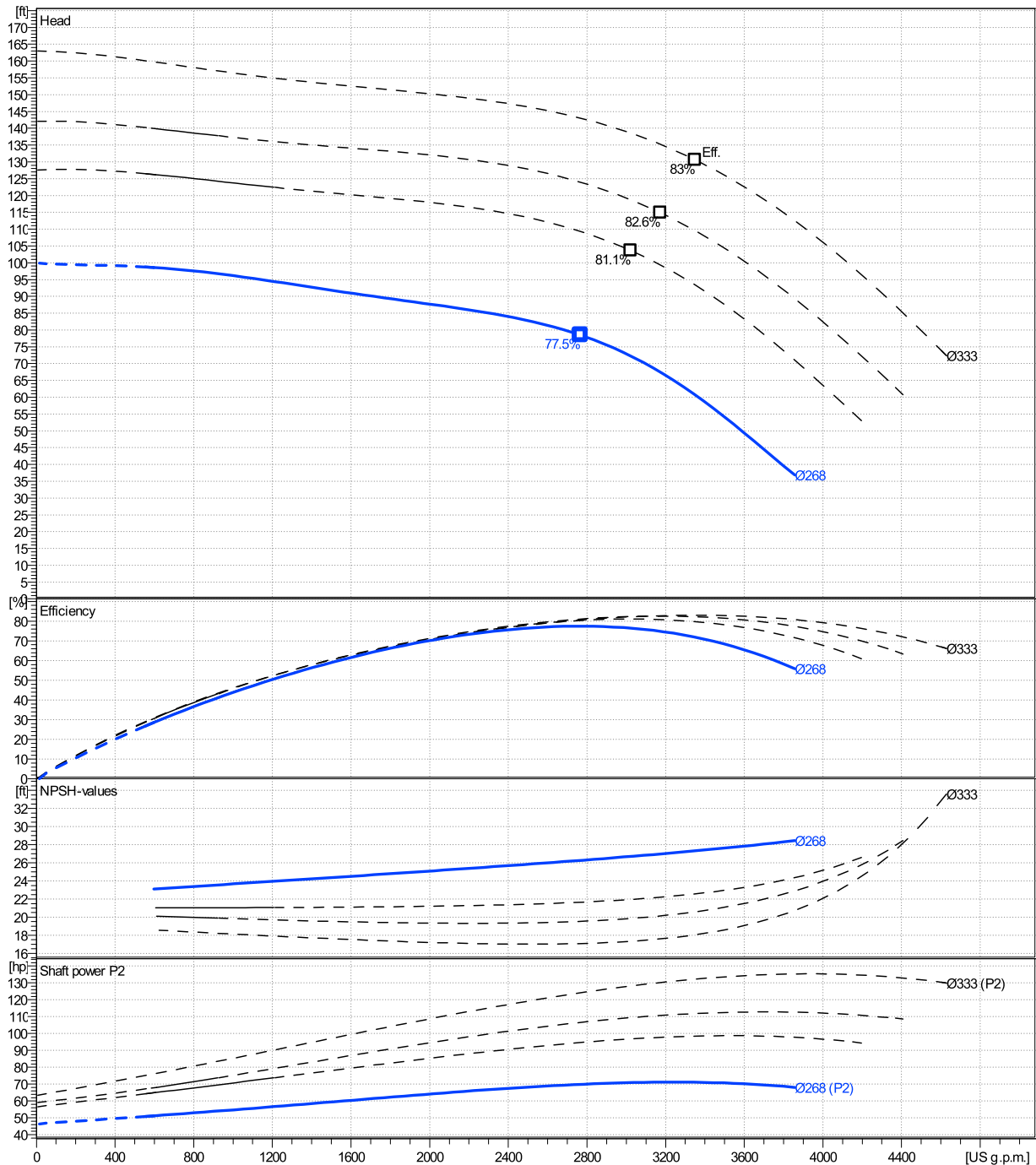
	Ø mm	Pump capacity			Pump head		Shaft power P2			Frequency	Hz	
		Operating range Min. US g.p.m.	Max. US g.p.m.	η Max. US g.p.m.	H(Q=0) ft	η Max. ft	P2(Q=0) hp	Max. hp	η Max. hp	Operating speed	rpm	
actual	10 9/16	597	3860	2770	99.9	78.5		71.2	69.9	Nominal flow	US g.p.m.	0
Min.	0	/	/	2770	99.9	78.5		/	69.9	Nominal head	ft	0
Max.	13 1/8	/	/	3350	163	131		/	132	Inlet pressure	psi	0
										Static head	ft	0

Power datas referred to:

hydr. Performance acceptance acc. To EN ISO 9906 Class Grade 3B

Water [100%] ; 39.2°F; 62.4lb/ft³; 1.69E-5ft²/s

MEI: 0.57



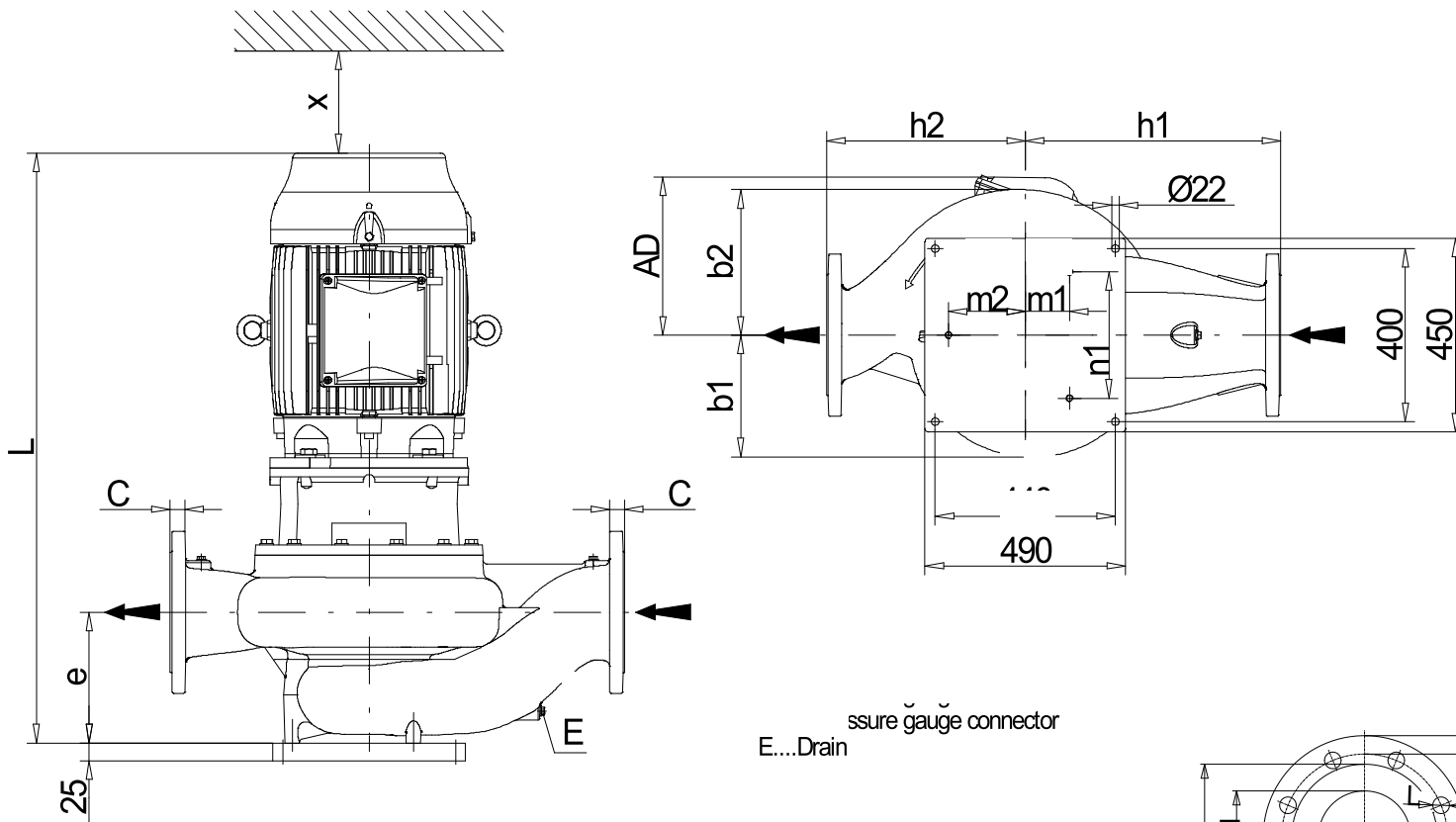
LNES 250-315/550/L46UDC4

Dimensions

Company name
Contact
Phone number
e-mail address

Rigid coupling
with support foot
3MGS 250 M B5 55 kW

Electrical and dimensional data refer to IE3 motor



Dimensions		[inch]	
AD	14 ¹³ / ₁₆		
b1	11 ¹ / ₄		
b2	13 ¹³ / ₁₆		
DNd	9 ¹³ / ₁₆		
DNs	9 ¹³ / ₁₆		
E	1/2"		
e	12 ⁹ / ₈		
f	11 ³ / ₁₆		
H	37 ³ / ₈		
h1	21 ⁹ / ₈		
h2	15 ³ / ₄		
L	53 ¹⁵ / ₁₆		
m1	3 ⁹ / ₁₆		
m2	7 ¹ / ₁₆		
n1	12 ⁵ / ₁₆		
PM1	1/2"		
PM2	1/2"		
Type	C		
x	5 ¹ / ₂		

Weight	
Total weight	696 kg

Connections			
Suction nozzle		Discharge nozzle	
DN250		DN250	
PN16		PN16	
EN1092-2		EN1092-2	
C	1 ¹ / ₄	C	1 ¹ / ₄
D	15 ¹⁵ / ₁₆	D	15 ¹⁵ / ₁₆
d1	12 ⁹ / ₁₆	d1	12 ⁹ / ₁₆
K	14	K	14
L	1 ¹ / ₈	L	1 ¹ / ₈
z	1/2	z	1/2

Dimensions and weight without obligation

Project	Xylect-20070985	Created by		Last update	1/19/2025
Block	LNES 250-315/1100/L46UDC4	Created on	1/19/2025		

Value C, D may vary from Standard