

# LNES 65-160/11/P45RCS4

## Technical data

Company name  
Contact  
Phone number  
e-mail address

Operating data					
1	Pumpe type	Single head pump		Fluid	Water
2	No. of pumps	1		Operating temperature t A	°C 4
3	Nominal flow	m <sup>3</sup> /h	0	Max / Min Operating Temperature mech. Seal	°C 120 / -25
4	Nominal head	m	0	pH-value at t A	7
5	Static head	m	0	Density at t A	kg/m <sup>3</sup> 1000
6	Inlet pressure	kPa	0	Kin. viscosity at t A	mm <sup>2</sup> /s 1.569
7	Environmental temperature	°C	20	Vapor pressure at t A	kPa 100
8	Available system NPSH	m	0	Altitude	0

Pump data						
9	Lubrication	Standard, Grease lubrication [Std]				
10	Execution					
11	Design	In-line		Impeller Ø	Max. mm 176	
12	Operating speed	1450 rpm	Stages 1		designed mm 170	
13	Suction nozzle	DN 65 /	PN 16 /		EN1092-2	Min. mm 144
14	Discharge nozzle	DN 65 /	PN 16 /	EN1092-2	Flow	Nominal m <sup>3</sup> /h
15	Max. casing pressure	kPa				Max- m <sup>3</sup> /h 52.7
16	Max. working pressure	kPa	92.9		Min- m <sup>3</sup> /h 11.9	
17	Impeller type	Radial impeller		Head	Nominal m	
18	Head H(Q=0)	m	9.5		at Qmax m 3.8	
19	Max. shaft power	kW	1.1		at Qmin m 9	
20	Pump weight	kg		Shaft power	kW	
21	Total weight	kg	58.0	Efficiency	%	
				NPSH 3%	m	

Materials					
22		Pump		Shaft Seal	
23	Volute Casing	Cast iron		Single mechanical seal, without shaft sleeve	
24	Casing Cover	Cast iron		eMG12 - Ø22mm	BQ7EGG-WA
25	Impeller	Stainless steel / AISI 304		Mechanical seal diameter	22 mm
26	Stub shaft	Stainless steel / AISI 316L		1. Rotating ring	Carbon graphite resin impregnated
27	Wear ring	Stainless steel / AISI 304		2. Stationary ring	SiC, silicon carbide, sintered press.less
28	Impeller lock nut and washer	Stainless steel / AISI 304		3. Secondary seal	Ethylene propylene rubber (EPDM)
29	Impeller key	Stainless steel / AISI 316L		4. Springs	CrNiMo - Steel
30	Fill and drain plugs	Nickel-plated brass		5. Others	EPDM - WRAS
31				Gaskets of the pump	Ethylene propylene rubber (EPDM)
32					
33					
34					
35					
36					
37					
38					
39					
40					
41					

Motor data					
Electrical and dimensional data refer to IE3 motor					
42	Manufacturer	Lowara			
43	Specific design	IE3 3ph Flange Motor - Premium Efficiency			
44	Type	PLM 90 B5 1,1 kW			
45	Rated power	1.1 kW	Rated current	4.59 A	
46	Nominal speed	1435 rpm	Rated voltage	230 V	
47	Frame size	90	Service factor	1	
48	Weight	kg 19.4	Degree of protection	IP55	

Remarks					
49					
50					
50					
52					

# LNES 65-160/11/P45RCS4

## Performance curve

Company name  
Contact  
Phone number  
e-mail address

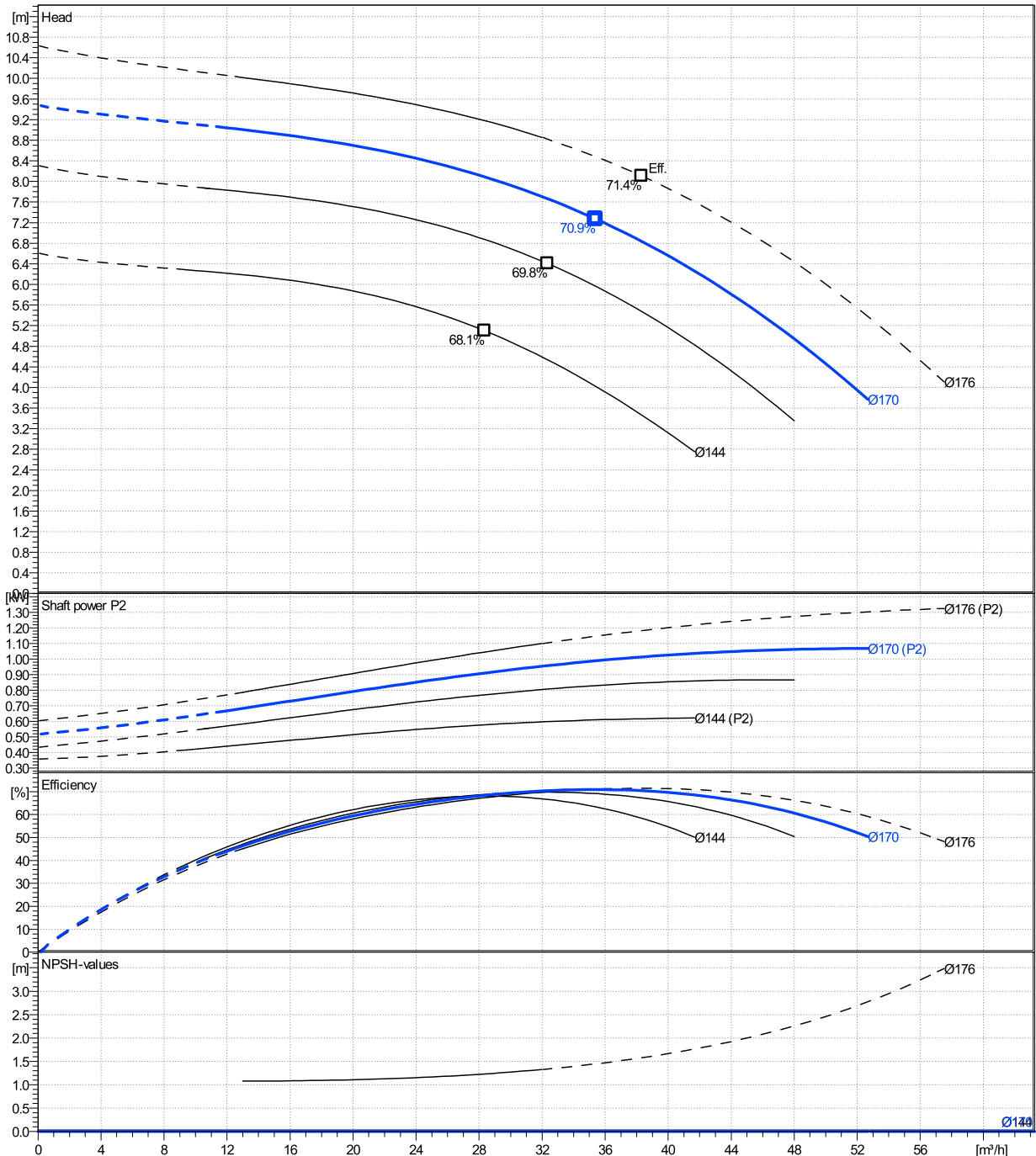
	Ø mm	Pump capacity			Pump head		Shaft power P2			Frequency	Hz	50
		Operating range Min. m³/h	Max. m³/h	η Max. m³/h	H(Q=0) m	η Max. m	P2(Q=0) kW	Max. kW	η Max. kW	Operating speed	rpm	1450
actual	170	11.9	52.7	35.4	9.47	7.27	1.07	0.989	Nominal flow	m³/h	0	
Min.	0	/	/	28.4	6.6	5.1	/	0.578	Nominal head	m	0	
Max.	176	/	/	38.3	10.6	8.1	/	1.18	Inlet pressure	kPa	0	
									Static head	m	0	

**Power datas referred to:**

hydr. Performance acceptance acc. To EN ISO 9906 Class Grade 3B

Water [100%] ; 4°C; 1000kg/m³; 1.57mm²/s

MEI: N.A - according to Ecodesign Directive 2009/125/EC and Regulation (EU) No.547/2012



# LNES 65-160/11/P45RCS4

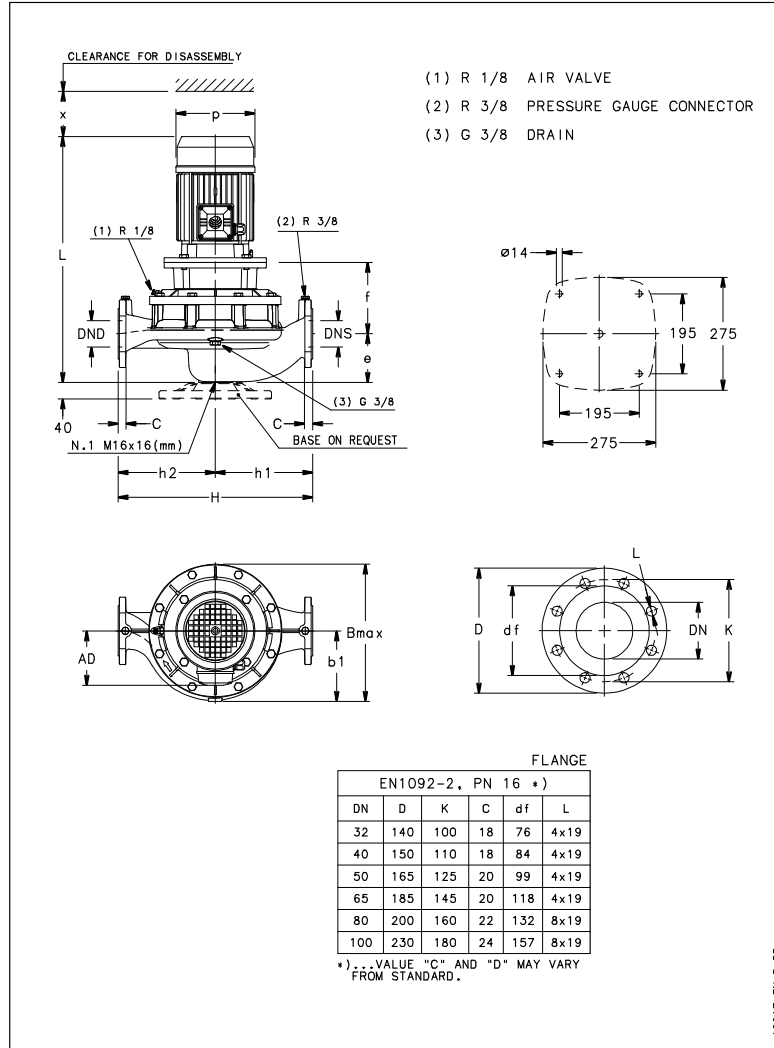
## Dimensions

Company name  
Contact  
Phone number  
e-mail address

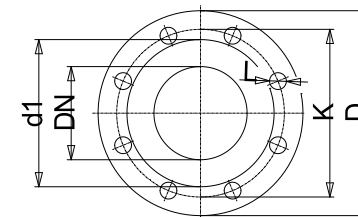
Rigid coupling

PLM 90 B5 1,1 kW

Electrical and dimensional data refer to IE3 motor



A0017-EN\_LB\_DD



Value C, D may vary from Standard

Dimensions		[ mm ]	
AD	134		
b1	148		
Bmax	296		
DNd	65		
DNs	65		
e	105		
f	180		
H	360		
h1	190		
h2	170		
L	583		
p	174		
x	94		

Weight	
Total weight	58 kg

Connections			
Suction nozzle		Discharge nozzle	
DN 65		DN 65	
PN 16		PN 16	
EN1092-2		EN1092-2	
C	20	C	20
D	185	D	185
df	118	df	118
DN	65	DN	65
K	145	K	145
L	4 x 19	L	4 x 19

### Dimensions and weight without obligation

Project Xylect-20128214  
Block LNES 65-160/15/P45RCS4

Created by  
Created on 12/21/2024

Last update 12/21/2024