

# LNES 80-125/05/X45RCC4

## Technical data

Company name  
Contact  
Phone number  
e-mail address

Operating data			
1	Pumpe type	Single head pump	Fluid Water
2	No. of pumps	1	Operating temperature t A °C 4
3	Nominal flow	m³/h 0	Max / Min Operating Temperature mech. Seal °C 120 / -25
4	Nominal head	m 0	pH-value at t A 7
5	Static head	m 0	Density at t A kg/m³ 1000
6	Inlet pressure	kPa 0	Kin. viscosity at t A mm²/s 1.569
7	Environmental temperature	°C 20	Vapor pressure at t A kPa 100
8	Available system NPSH	m 0	Altitude 0

Pump data			
9	Lubrication	Standard, Grease lubrication [Std]	
10	Execution		
11	Design	In-line	Impeller Ø
12	Operating speed	1450 rpm	Stages 1
13	Suction nozzle	DN 80 / PN 16 / EN1092-2	Max. mm 148
14	Discharge nozzle	DN 80 / PN 16 / EN1092-2	designed mm 117
15	Max. casing pressure	kPa	Min. mm 117
16	Max. working pressure	kPa 43.3	Nominal m³/h
17	Impeller type	Radial impeller	Flow Max- m³/h 45
18	Head H(Q=0)	m 4.4	Min- m³/h 12
19	Max. shaft power	kW .5	Head at Qmax m 2.6
20	Pump weight	kg	at Qmin m 4.4
21	Total weight	kg 60.0	Shaft power kW
			Efficiency %
			NPSH 3% m

Materials			
22		Pump	Shaft Seal
23	Volute Casing	Cast iron	Single mechanical seal, without shaft sleeve
24	Casing Cover	Cast iron	eMG12 - Ø22mm BQ7EGG-WA
25	Impeller	Cast iron / ASTM Class 30	Mechanical seal diameter 22 mm
26	Stub shaft	Stainless steel / AISI 431	1. Rotating ring Carbon graphite resin impregnated
27	Wear ring	Stainless steel / AISI 304	2. Stationary ring SiC, silicon carbide, sintered press. less
28	Impeller Nut	Stainless steel	3. Secondary seal Ethylene propylene rubber (EPDM)
29	Impeller washer	Stainless steel	4. Springs CrNiMo - Steel
30	Impeller key	Stainless steel / AISI 316Ti	5. Others EPDM - WRAS
31	PLUG	Stainless steel / AISI 316Ti	Gaskets of the pump Ethylene propylene rubber (EPDM)
32	GASKET	Asbestos-free synthetic fiber AFM34	
33			
34			
35			
36			
37			
38			
39			
40			
41			

Motor data			
42	Manufacturer	Xylem	
43	Specific design	IE2 3ph Flange Motor - Premium Efficiency	
44	Type	LLM480B5/305	
45	Rated power	0.55 kW	Rated current 1.35 A
46	Nominal speed	1420 rpm	Rated voltage 400 V
47	Frame size	80	Service factor 1
48	Weight	kg 8.2	Degree of protection IP55

Remarks			
49			
50			
50			
52			

# LNES 80-125/05/X45RCC4

## Performance curve

Company name  
Contact  
Phone number  
e-mail address

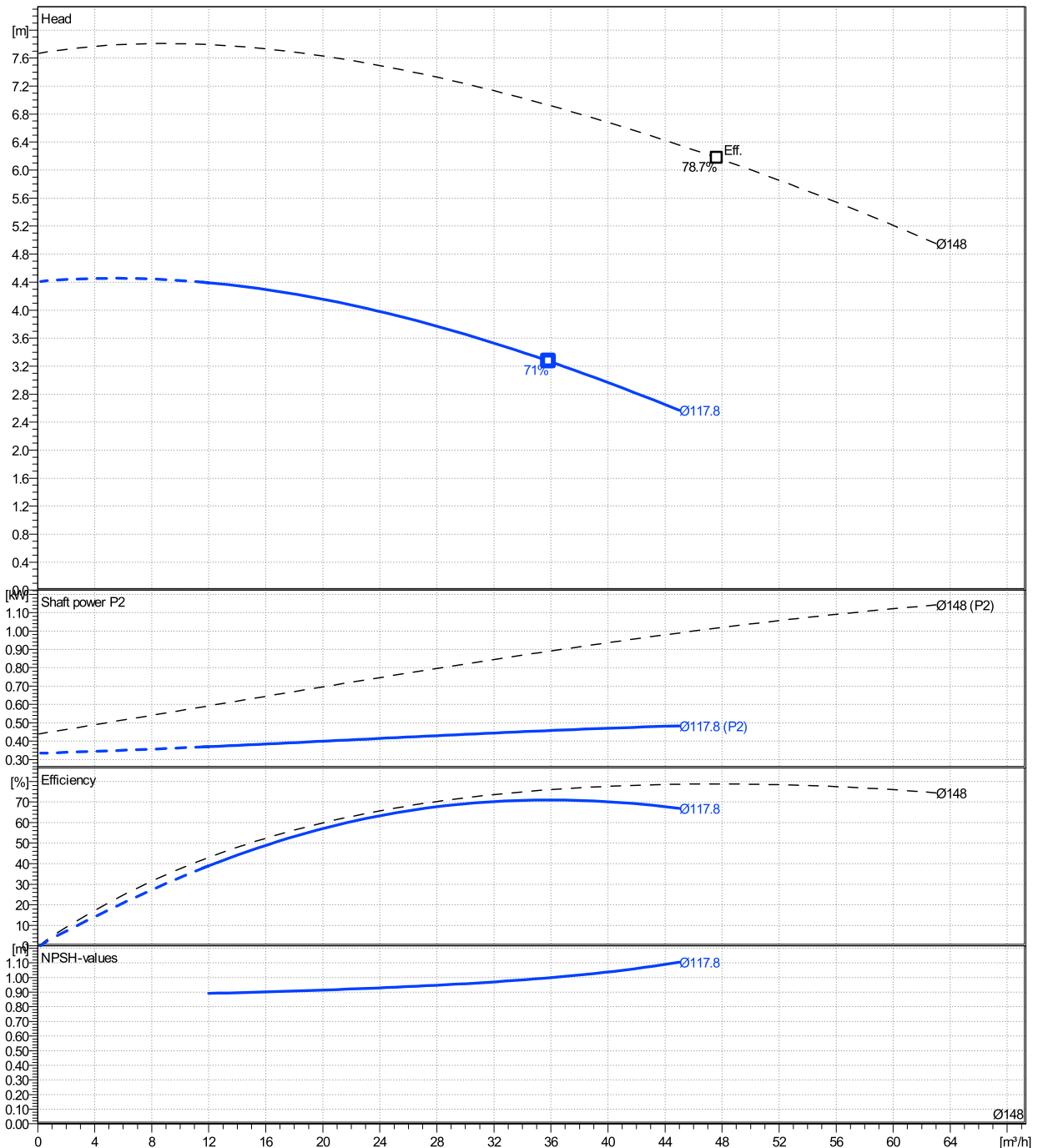
	Ø mm	Pump capacity			Pump head		Shaft power P2			Frequency	Hz	50
		Operating range Min. m³/h	Max. m³/h	η Max. m³/h	H(Q=0) m	η Max. m	P2(Q=0) kW	Max. kW	η Max. kW	Operating speed	rpm	1450
actual	117	12	45	35.8	4.41	3.27		0.483	0.457	Nominal flow	m³/h	0
Min.	0	/	/	35.8	4.41	3.27		/	0.457	Nominal head	m	0
Max.	148	/	/	47.6	7.67	6.17		/	1.02	Inlet pressure	kPa	0
										Static head	m	0

**Power datas referred to:**

hydr. Performance acceptance acc. To EN ISO 9906 Class Grade 3B

Water [100%] ; 4°C; 1000kg/m³; 1.57mm²/s

MEI: N.A - according to Ecodesign Directive 2009/125/EC and Regulation (EU) No.547/2012

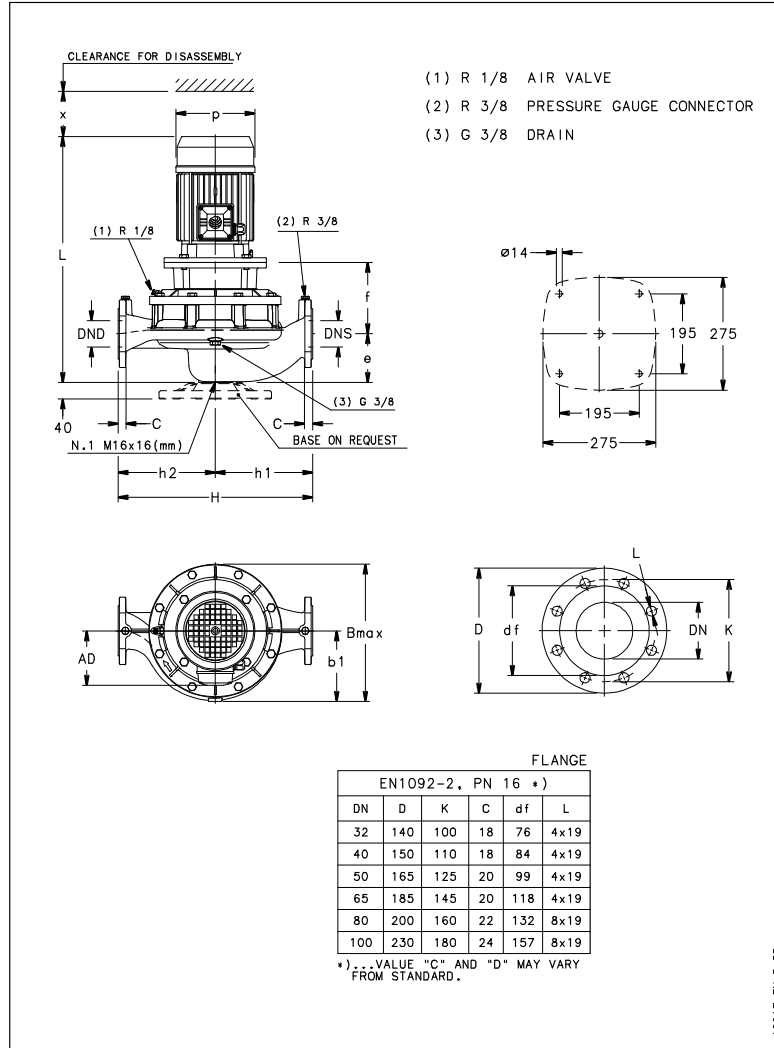


**LNES 80-125/05/X45RCC4**

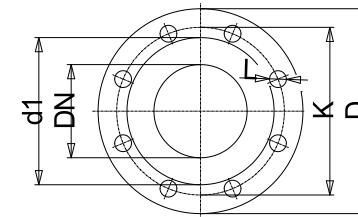
**Dimensions**

Company name  
Contact  
Phone number  
e-mail address

Rigid coupling  
LLM480B5/305



A0017-EN\_LB\_DD



Value C, D may vary from Standard

**Dimensions [ mm ]**

AD	128
b1	168
Bmax	336
DNd	80
DNs	80
e	114
f	170
H	420
h1	215
h2	205
L	515
p	159
x	111

**Weight**

<b>Total weight</b>	<b>60 kg</b>
---------------------	--------------

**Connections**

Suction nozzle		Discharge nozzle	
DN 80		DN 80	
PN 16		PN 16	
EN1092-2		EN1092-2	
C	22	C	22
D	200	D	200
df	132	df	132
DN	80	DN	80
K	160	K	160
L	8 x 19	L	8 x 19

**Dimensions and weight without obligation**

**Project** Xlect-20128214  
**Block** LNES 80-125/110/P25VCC4

**Created by**  
**Created on** 12/21/2024

**Last update** 12/21/2024