

LNES 80-125/15/P45RCC4

Technical data

Company name
Contact
Phone number
e-mail address

Operating data			
1	Pumpe type	Single head pump	Fluid Water
2	No. of pumps	1	Operating temperature t A °C 4
3	Nominal flow	m ³ /h 0	Max / Min Operating Temperature mech. Seal °C 120 / -25
4	Nominal head	m 0	pH-value at t A 7
5	Static head	m 0	Density at t A kg/m ³ 1000
6	Inlet pressure	kPa 0	Kin. viscosity at t A mm ² /s 1.569
7	Environmental temperature	°C 20	Vapor pressure at t A kPa 100
8	Available system NPSH	m 0	Altitude 0

Pump data			
9	Lubrication	Standard, Grease lubrication [Std]	
10	Execution		
11	Design	In-line	
12	Operating speed	1450 rpm	Stages 1
13	Suction nozzle	DN 80 / PN 16 / EN1092-2	Impeller Ø
14	Discharge nozzle	DN 80 / PN 16 / EN1092-2	
15	Max. casing pressure	kPa	Flow
16	Max. working pressure	kPa 75.2	
17	Impeller type	Radial impeller	
18	Head H(Q=0)	m 7.7	Head
19	Max. shaft power	kW 1.1	
20	Pump weight	kg	Shaft power kW
21	Total weight	kg 72.0	
			Efficiency %
			NPSH 3% m

Materials			
22			
23	Volute Casing	Cast iron	Shaft Seal
24	Casing Cover	Cast iron	Single mechanical seal, without shaft sleeve
25	Impeller	Cast iron / ASTM Class 30	eMG12 - Ø22mm BQ7EGG-WA
26	Stub shaft	Stainless steel / AISI 431	Mechanical seal diameter 22 mm
27	Wear ring	Stainless steel / AISI 304	1. Rotating ring Carbon graphite resin impregnated
28	Impeller Nut	Stainless steel	2. Stationary ring SiC, silicon carbide, sintered press. less
29	Impeller washer	Stainless steel	3. Secondary seal Ethylene propylene rubber (EPDM)
30	Impeller key	Stainless steel / AISI 316Ti	4. Springs CrNiMo - Steel
31	PLUG	Stainless steel / AISI 316Ti	5. Others EPDM - WRAS
32	GASKET	Asbestos-free synthetic fiber AFM34	Gaskets of the pump Ethylene propylene rubber (EPDM)
33			
34			
35			
36			
37			
38			
39			
40			
41			

Motor data			
Electrical and dimensional data refer to IE3 motor			
42	Manufacturer	Lowara	
43	Specific design	IE3 3ph Flange Motor - Premium Efficiency	
44	Type	PLM 90 B5 1,5 kW	
45	Rated power	1.5 kW	Rated current 3.7 A
46	Nominal speed	1440 rpm	Rated voltage 400 V
47	Frame size	90	Service factor 1
48	Weight	kg 22.6	Degree of protection IP55

Remarks			
49			
50			
50			
52			

LNES 80-125/15/P45RCC4

Performance curve

Company name
Contact
Phone number
e-mail address

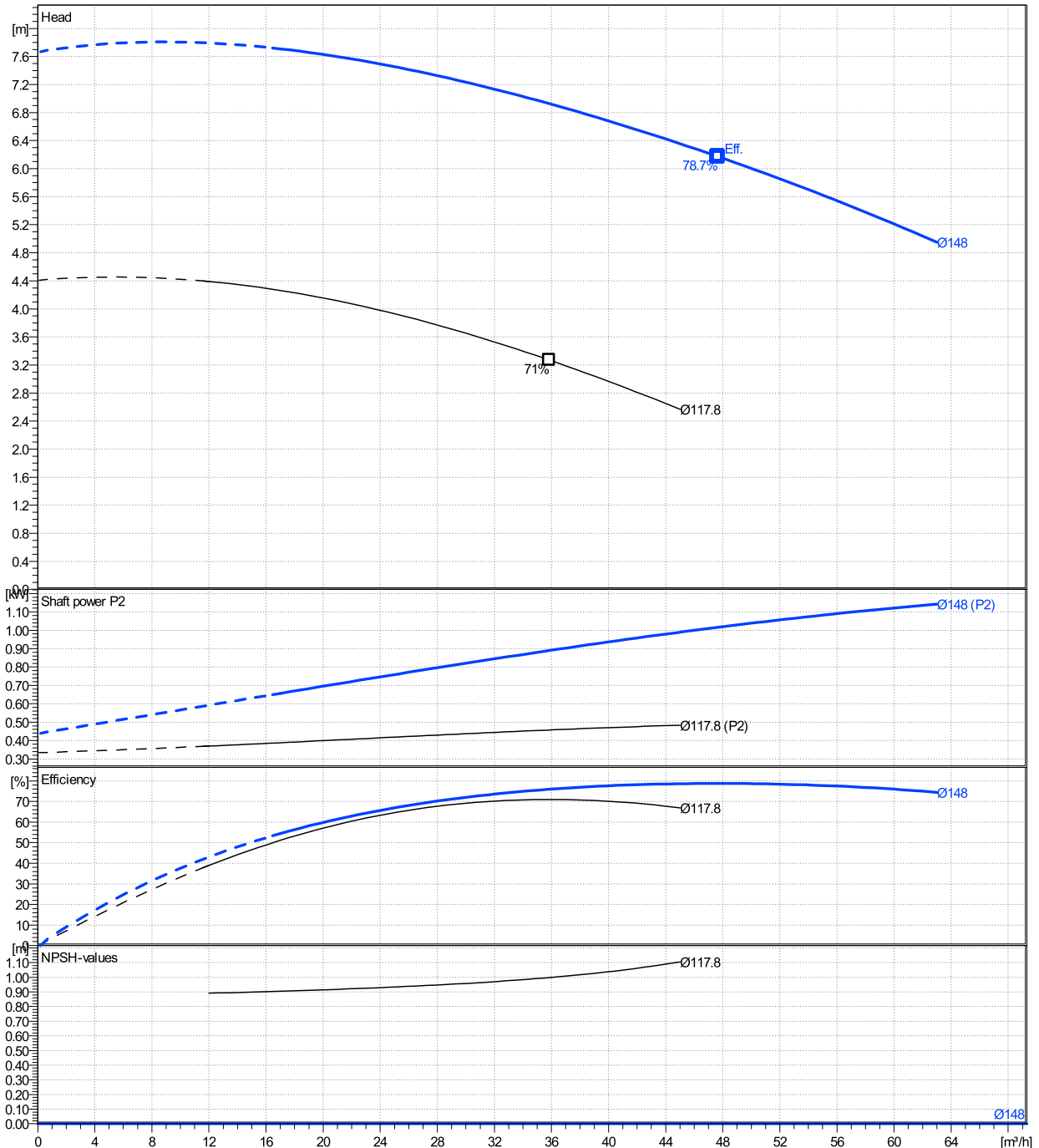
	Ø mm	Pump capacity			Pump head		Shaft power P2			Frequency		Hz	50
		Operating range Min. m³/h	Max. m³/h	η Max. m³/h	H(Q=0) m	η Max. m	P2(Q=0) kW	Max. kW	η Max. kW	Operating speed rpm	1450		
actual	148	17	63	47.6	7.67	6.17		1.14	1.02	Nominal flow	m³/h	0	
Min.	0	/	/	35.8	4.41	3.27		/	0.457	Nominal head	m	0	
Max.	148	/	/	47.6	7.67	6.17		/	1.02	Inlet pressure	kPa	0	
										Static head	m	0	

Power datas referred to:

hydr. Performance acceptance acc. To EN ISO 9906 Class Grade 3B

Water [100%] ; 4°C; 1000kg/m³; 1.57mm²/s

MEI: N.A - according to Ecodesign Directive 2009/125/EC and Regulation (EU) No.547/2012



LNES 80-125/15/P45RCC4

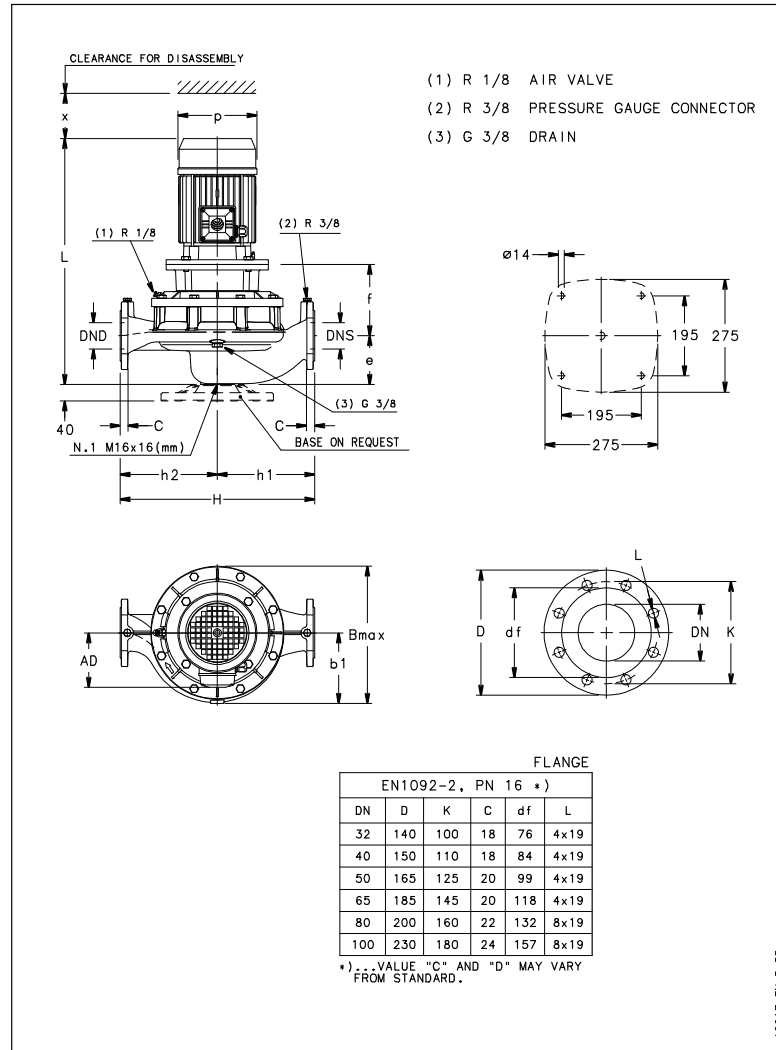
Dimensions

Company name
Contact
Phone number
e-mail address

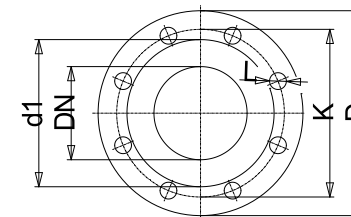
Rigid coupling

PLM 90 B5 1,5 kW

Electrical and dimensional data refer to IE3 motor



A0017-EN_LB_DD



Value C, D may vary from Standard

Dimensions		[mm]	
AD	134		
b1	168		
Bmax	336		
DNd	80		
DNs	80		
e	114		
f	170		
H	420		
h1	215		
h2	205		
L	582		
p	174		
x	111		

Weight	
Total weight	72 kg

Connections			
Suction nozzle		Discharge nozzle	
DN 80		DN 80	
PN 16		PN 16	
EN1092-2		EN1092-2	
C	22	C	22
D	200	D	200
df	132	df	132
DN	80	DN	80
K	160	K	160
L	8 x 19	L	8 x 19

Dimensions and weight without obligation

Project Xylect-20128214
Block LNES 80-125/110/P25VCC4

Created by
Created on 12/21/2024

Last update 12/21/2024