

# LNES 80-250/110/P46PCC4

## Technical data

Company name  
Contact  
Phone number  
e-mail address

Operating data					
1	Pumpe type	Single head pump		Fluid	Water
2	No. of pumps	1		Operating temperature t A	°F 39.2
3	Nominal flow	US g.p.m.	0	Max / Min Operating Temperature mech. Seal	°F 120 / -25
4	Nominal head	ft	0	pH-value at t A	7
5	Static head	ft	0	Density at t A	lb/ft³ 62.4
6	Inlet pressure	psi	0	Kin. viscosity at t A	ft²/s 1.689E-5
7	Environmental temperature	°F	68	Vapor pressure at t A	psi 14.5
8	Available system NPSH	ft	0	Altitude	0

Pump data					
9	Lubrication	Standard, Grease lubrication [Std]			
10	Execution				
11	Design	In-line		Impeller Ø	Max. inch 10 3/16
12	Operating speed	1750 rpm	Stages 1		designed inch 10 3/16
13	Suction nozzle	DN 80 /	PN 16 /	Flow	Min. inch 9 9/16
14	Discharge nozzle	DN 80 /	PN 16 /		Nominal US g.p.m.
15	Max. casing pressure	psi		Max- US g.p.m.	550.4
16	Max. working pressure	psi	47.9	Min- US g.p.m.	110.1
17	Impeller type	Radial impeller		Head	Nominal ft
18	Head H(Q=0)	ft	110		at Qmax ft 78.3
19	Max. shaft power	hp	15.1		at Qmin ft 116.4
20	Pump weight	kg		Shaft power	hp
21	Total weight	lb	407.8	Efficiency	%
				NPSH 3%	ft

Materials					
22		Pump		Shaft Seal	
23	Volute Casing	Cast iron		Single mechanical seal, without shaft sleeve	
24	Casing Cover	Cast iron		eMG12 - Ø38mm	BQ7EGG-WA
25	Impeller	Cast iron / ASTM Class 30		Mechanical seal diameter	1 1/2 inch
26	Stub shaft	Stainless steel / AISI 431		1. Rotating ring	Carbon graphite resin impregnated
27	Wear ring	Stainless steel / AISI 304		2. Stationary ring	SiC, silicon carbide, sintered press.less
28	Impeller Nut	Stainless steel		3. Secondary seal	Ethylene propylene rubber (EPDM)
29	Impeller washer	Stainless steel		4. Springs	CrNiMo - Steel
30	Impeller key	Stainless steel / AISI 316Ti		5. Others	EPDM - WRAS
31	PLUG	Stainless steel / AISI 316Ti		Gaskets of the pump	Ethylene propylene rubber (EPDM)
32	GASKET	Asbestos-free synthetic fiber AFM34			
33					
34					
35					
36					
37					
38					
39					
40					
41					

Motor data					
Electrical and dimensional data refer to IE3 motor					
42	Manufacturer	Lowara			
43	Specific design	IE3 3ph Flange Motor - Premium Efficiency			
44	Type	PLM 160 B5 11 kW			
45	Rated power	14.751 hp	Rated current	38.3 A	
46	Nominal speed	1758 rpm	Rated voltage	220 V	
47	Frame size	160	Service factor	1	
48	Weight	lb 276.5	Degree of protection	IP55	

Remarks					
49					
50					
50					
52					

# LNES 80-250/110/P46PCC4

## Performance curve

Company name  
Contact  
Phone number  
e-mail address

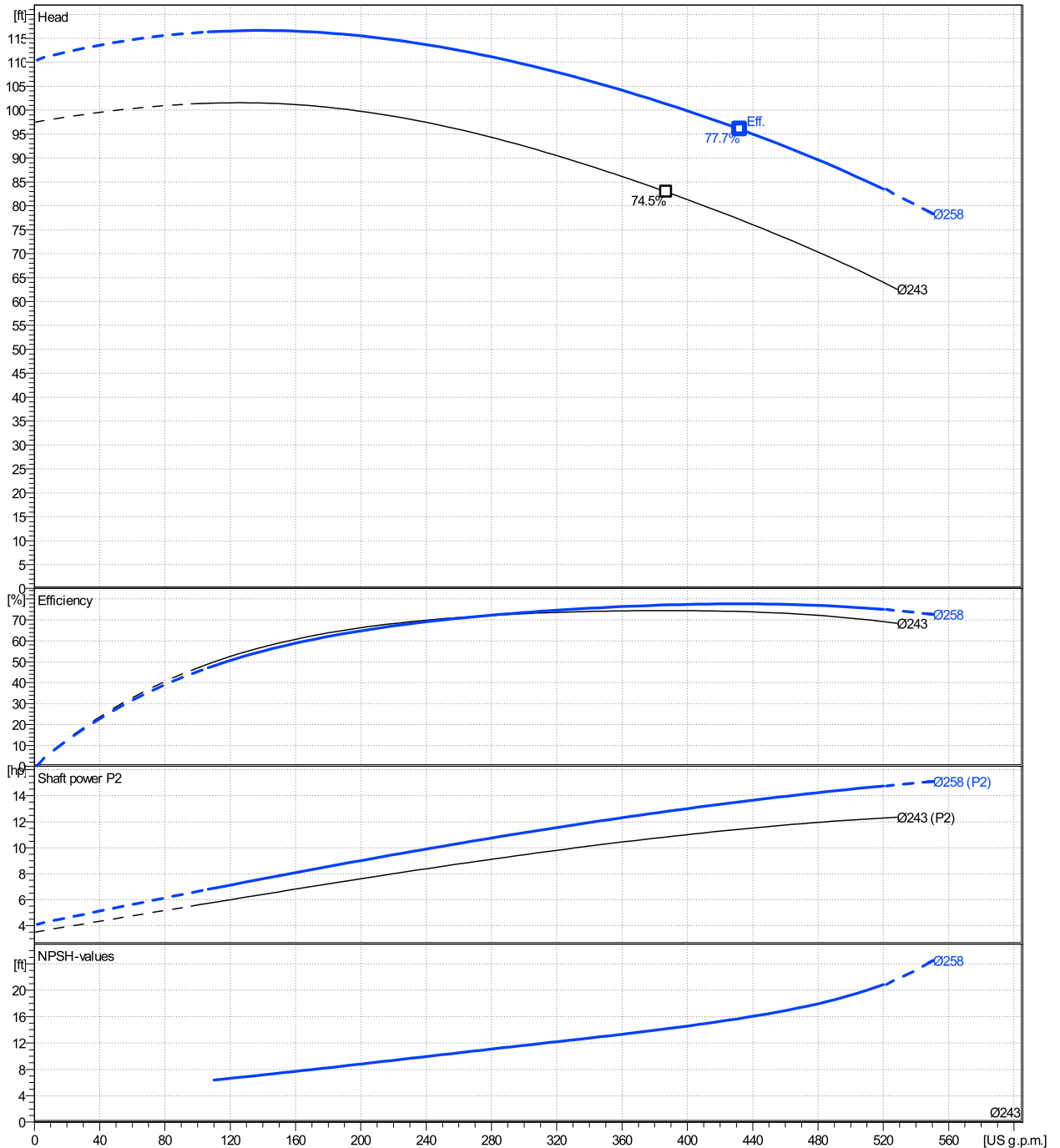
	Ø mm	Pump capacity Operating range			Pump head		Shaft power P2			Frequency	Hz	60
		Min. US g.p.m.	Max. US g.p.m.	η Max. US g.p.m.	H(Q=0) ft	η Max. ft	P2(Q=0) hp	Max. hp	η Max. hp	Operating speed	rpm	1750
actual	10 3/16	110	520	432	110	96	15.1	13.5	Nominal flow	US g.p.m.	0	
Min.	0	/	/	387	97.5	82.9	/	10.8	Nominal head	ft	0	
Max.	10 3/16	/	/	432	110	96	/	13.5	Inlet pressure	psi	0	
									Static head	ft	0	

**Power datas referred to:**

hydr. Performance acceptance acc. To EN ISO 9906 Class Grade 3B

Water [100%] ; 39.2°F; 62.4lb/ft³; 1.69E-5ft²/s

MEI: N.A - according to Ecodesign Directive 2009/125/EC and Regulation (EU) No.547/2012



# LNES 80-250/110/P46PCC4

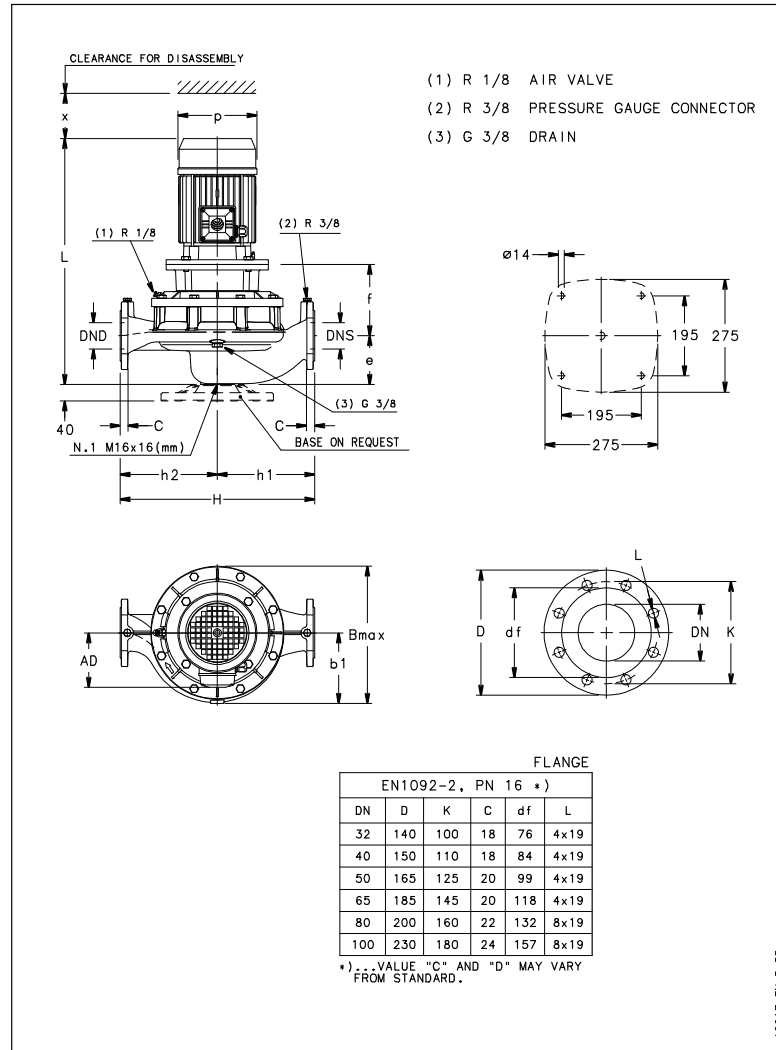
## Dimensions

Company name  
Contact  
Phone number  
e-mail address

Rigid coupling

PLM 160 B5 11 kW

Electrical and dimensional data refer to IE3 motor



### Dimensions [ inch ]

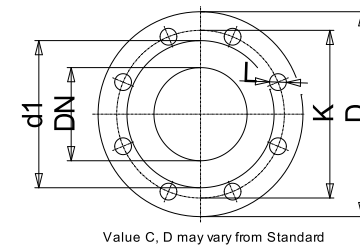
AD	9 <sup>7</sup> / <sub>16</sub>		
b1	7 <sup>5</sup> / <sub>16</sub>		
Bmax	13 <sup>7</sup> / <sub>8</sub>		
DNd	3 <sup>1</sup> / <sub>8</sub>		
DNS	3 <sup>1</sup> / <sub>8</sub>		
e	5 <sup>3</sup> / <sub>16</sub>		
f	9 <sup>7</sup> / <sub>16</sub>		
H	19 <sup>11</sup> / <sub>16</sub>		
h1	10 <sup>7</sup> / <sub>16</sub>		
h2	9 <sup>1</sup> / <sub>4</sub>		
L	34 <sup>1</sup> / <sub>8</sub>		
p	12 <sup>5</sup> / <sub>16</sub>		
x	5 <sup>1</sup> / <sub>8</sub>		

### Weight

Total weight	185 kg
--------------	--------

### Connections

Suction nozzle		Discharge nozzle	
DN 80		DN 80	
PN 16		PN 16	
EN1092-2		EN1092-2	
C	7 <sup>1</sup> / <sub>8</sub>	C	7 <sup>1</sup> / <sub>8</sub>
D	7 <sup>7</sup> / <sub>8</sub>	D	7 <sup>7</sup> / <sub>8</sub>
df	5 <sup>3</sup> / <sub>16</sub>	df	5 <sup>3</sup> / <sub>16</sub>
DN	3 <sup>1</sup> / <sub>8</sub>	DN	3 <sup>1</sup> / <sub>8</sub>
K	6 <sup>5</sup> / <sub>16</sub>	K	6 <sup>5</sup> / <sub>16</sub>
L	8 x 19	L	8 x 19



### Dimensions and weight without obligation

Project	Xylect-20070985	Created by		Last update	1/19/2025
Block	LNES 80-250/110/P46PCC4	Created on	1/19/2025		