

NSCE 65-160/110/P25VCC4

Technical data

Company name
Contact
Phone number
e-mail address

Operating data						
1	Pumpe type	Single head pump		Fluid	Water, pure	
2	No. of pumps	1		Operating temperature t A	°C	4
3	Nominal flow	m ³ /h	0	Max / Min Operating Temperature mech. Seal	°C	120 / -25
4	Nominal head	m	0	pH-value at t A		7
5	Static head	m	0	Density at t A	kg/m ³	1000
6	Inlet pressure	kPa	0	Kin. viscosity at t A	mm ² /s	1.569
7	Environmental temperature	°C	20	Vapor pressure at t A	kPa	100
8	Available system NPSH	m	0	Altitude		0

Pump data						
9	Lubrication	Standard, Grease lubrication [Std]				
10	Execution	2 poles motor				
11	Design	Horizontal				Impeller Ø
12	Operating speed	2910 rpm	Stages	1		
13	Suction nozzle	DN 80 /	PN 16 /	EN1092-2		
14	Discharge nozzle	DN 65 /	PN 16 /	EN1092-2		Flow
15	Max. casing pressure	kPa				
16	Max. working pressure	kPa	329.3			
17	Impeller type	Radial impeller				Head
18	Head H(Q=0)	m	34			
19	Max. shaft power	kW	10.3			Shaft power
20	Pump weight	kg				Efficiency
21	Total weight	kg	96.0			NPSH 3%

Materials						
22		Pump			Shaft Seal	
23	Volute Casing	Cast Iron			Single mechanical seal, without shaft sleeve	
24	Casing Cover	Cast Iron			eMG12 - Ø28mm	BQ7EGG-WA
25	Impeller	Cast Iron			Mechanical seal diameter	28 mm
26	Shaft	Stainless steel			1. Rotating ring	Carbon graphite resin impregnated
27	Wear ring	Stainless steel			2. Stationary ring	SiC, silicon carbide, sintered press.less
28	Impeller lock nut and washer	Stainless steel			3. Secondary seal	Ethylene propylene rubber (EPDM)
29	Impeller key	Stainless steel			4. Springs	CrNiMo - Steel
30	Fill and drain plugs	Stainless steel			5. Others	EPDM - WRAS
31					Gaskets of the pump	Ethylene propylene rubber (EPDM)
32						
33						
34						
35						
36						
37						
38						
39						
40						
41						

Motor data					
Electrical and dimensional data refer to IE3 motor					
42	Manufacturer	Lowara			
43	Specific design	IE3 3ph Flange Motor			
44	Type	PLM 132 B14 11 kW			
45	Rated power	11 kW	Rated current	20.2 A	
46	Nominal speed	2910 rpm	Rated voltage	400 V	
47	Frame size	132	Service factor	1	
48	Weight	kg 63.0	Degree of protection	IP55	

Remarks					
49					
50					
50					
52					

NSCE 65-160/110/P25VCC4

Performance curve

Company name
Contact
Phone number
e-mail address

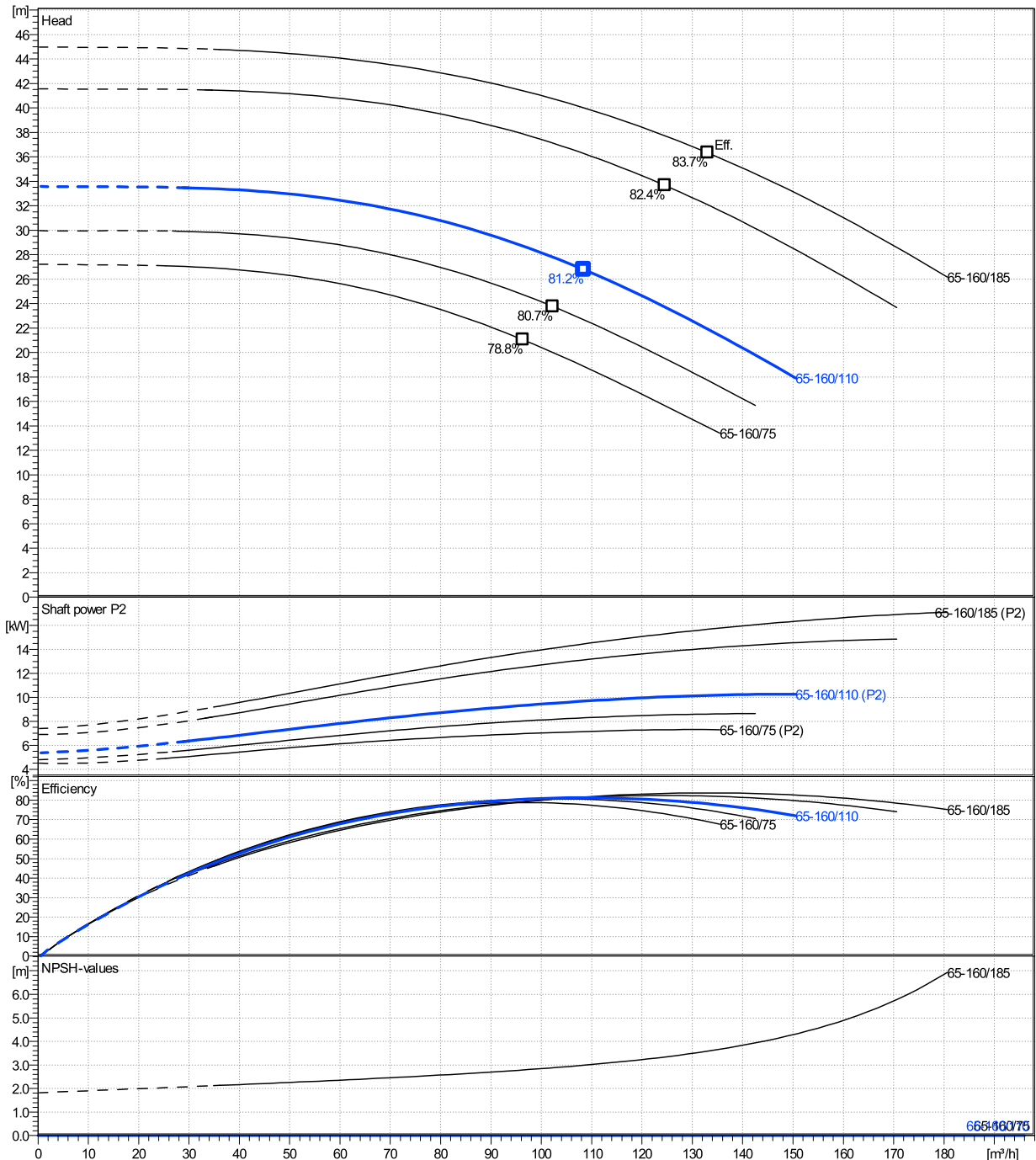
	Ø mm	Pump capacity			Pump head		Shaft power P2			Frequency	Hz	50
		Operating range Min. m³/h	Max. m³/h	η Max. m³/h	H(Q=0) m	η Max. m	P2(Q=0) kW	Max. kW	η Max. kW	Operating speed	rpm	2910
actual	159	30	151	108	33.6	26.8	10.3	9.68	Nominal flow	m³/h	0	
Min.	0	/	/	96.3	27.2	21.1	/	6.97	Nominal head	m	0	
Max.	180	/	/	133	45	36.3	/	15.7	Inlet pressure	kPa	0	
									Static head	m	0	

Power datas referred to:

hydr. Performance acceptance acc. To EN ISO 9906 Class Grade 3B

Water, pure [100%] ; 4°C; 1000kg/m³; 1.57mm²/s

MEI: N.A - according to Ecodesign Directive 2009/125/EC and Regulation (EU) No.547/2012



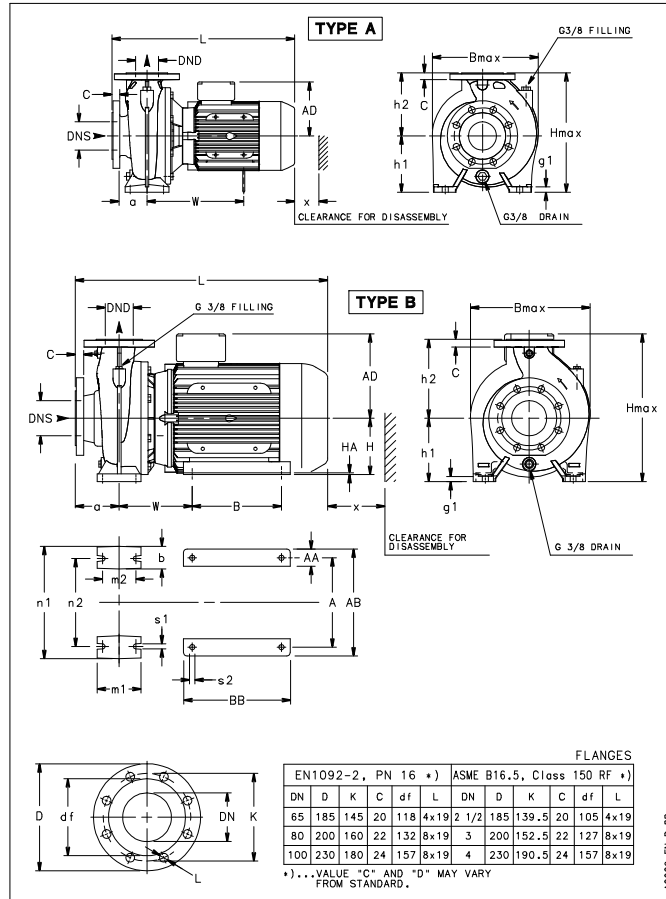
NSCE 65-160/110/P25VCC4

Dimensions

Company name
Contact
Phone number
e-mail address

Extended shaft
2 poles motor
PLM 132 B14 11 kW

Electrical and dimensional data refer to IE3 motor



Dimensions [mm]

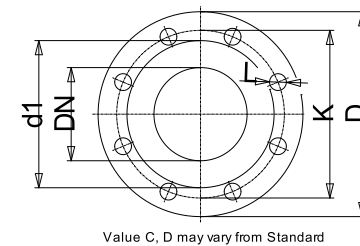
a	100
AD	191
B max	335
b	65
DND	65
DNS	80
g1	16
H max	360
h1	160
h2	200
L	605
m1	125
m2	95
n1	280
n2	212
s1	14
Type	A
W	343
x	108

Weight

Total weight	96 kg
---------------------	--------------

Connections

Suction nozzle		Discharge nozzle	
DN 80		DN 65	
PN 16		PN 16	
EN1092-2		EN1092-2	
C	22	C	20
D	200	D	185
df	132	df	118
DN	80	DN	65
K	160	K	145
L	8 x 19	L	4 x 19



Dimensions and weight without obligation

Project	Xylect-20124328	Created by		Last update	10/30/2024
Block	NSCE 65-160/185/P25VCC4	Created on	10/30/2024		