

NSCF 100-315/185/L45VCC4

Technical data

Company name
Contact
Phone number
e-mail address

Operating data				
1	Pumpe type	Single head pump	Fluid	Water, pure
2	No. of pumps	1	Operating temperature t A	°C 4
3	Nominal flow	m³/h 0	Max / Min Operating Temperature mech. Seal	°C 120 / -25
4	Nominal head	m 0	pH-value at t A	7
5	Static head	m 0	Density at t A	kg/m³ 1000
6	Inlet pressure	kPa 0	Kin. viscosity at t A	mm²/s 1.569
7	Environmental temperature	°C 20	Vapor pressure at t A	kPa 100
8	Available system NPSH	m 0	Altitude	0

Pump data				
9	Lubrication	Standard, Grease lubrication [Std]		
10	Execution	Standard coupling		
11	Design	Horizontal		
12	Operating speed	1475 rpm	Stages	1
13	Suction nozzle	DN125 / PN10/16 / EN1092-2	Impeller Ø	Max. mm 334
14	Discharge nozzle	DN100 / PN10/16 / EN1092-2		designed mm 298
15	Max. casing pressure	kPa	Flow	Min. mm 260
16	Max. working pressure	kPa 306.7		Nominal m³/h
17	Impeller type	Radial impeller		Max- m³/h 234.2
18	Head H(Q=0)	m 31	Head	Min- m³/h 22.4
19	Max. shaft power	kW 17.9		Nominal m
20	Pump weight	kg 116	at Qmax m 18.7	
21	Total weight	kg 355.1	at Qmin m 31.1	
			Shaft power kW	
			Efficiency %	
			NPSH 3% m	

Materials				
22		Pump	Shaft Seal	
23	Volute Casing	Cast Iron, EN 1561 - GJL-250, ASTM Class 35	Single mechanical seal, without shaft sleeve	
24	Impeller	Cast Iron, EN 1561 - GJL-200, ASTM Class 30	eMG12 - Ø38mm	BQ7EGG-WA
25	Casing Cover	Cast Iron, EN 1561 - GJL-250, ASTM Class 35	Mechanical seal diameter	38 mm
26	Shaft	Stainless steel, 1.4057, AISI 431	1. Rotating ring	Carbon graphite resin impregnated
27	Wear ring	Stainless steel, 1.4301, AISI 304	2. Stationary ring	SiC, silicon carbide, sintered press. less
28	Impeller lock nut and washer	A4 (1.4401)	3. Secondary seal	Ethylene propylene rubber (EPDM)
29	Impeller key	Stainless steel, 1.4571, AISI 316Ti	4. Springs	CrNiMo - Steel
30	Fill and drain plugs	Galvanized carbon steel, EN 10277-3, AISI 1213 / 1215	5. Others	EPDM - WRAS
31	Bearing bracket	Cast Iron, EN 1561 - GJL-250, ASTM Class 35	Gaskets of the pump	Ethylene propylene rubber (EPDM)
32				
33				
34				
35				
36				
37				
38				
39				
40				
41				

Motor data				Coupling			
42	Manufacturer	Lowara		Manufacturer	Flender		
43	Specific design	IE3 3ph Surface Motor - Premium Efficiency		Series	Standard Coupling - N-EUPEX - Type B		
44	Type	3MAS 180 M B3 18,5 kW		Shaft diameter	Pump 32 mm	Motor 48 mm	
45	Rated power	18.5 kW	Rated current 36 A	Frame size	110		
46	Nominal speed	1475 rpm	Rated voltage 400 V	Spacer length	mm 4		
47	Frame size	180 M	Service factor 1	Weight	kg 3.3		
48	Weight kg	127.2	Degree of protection IP55	Coupling protection	GR.COUPLGUARD ES32-190-16 A4	1.8 kg	

Base plate			Remarks		
49	Name	BASEFRAME_NSC80-2_C00			
50	Weight	kg 106.8			

NSCF 100-315/185/L45VCC4

Performance curve

Company name
Contact
Phone number
e-mail address

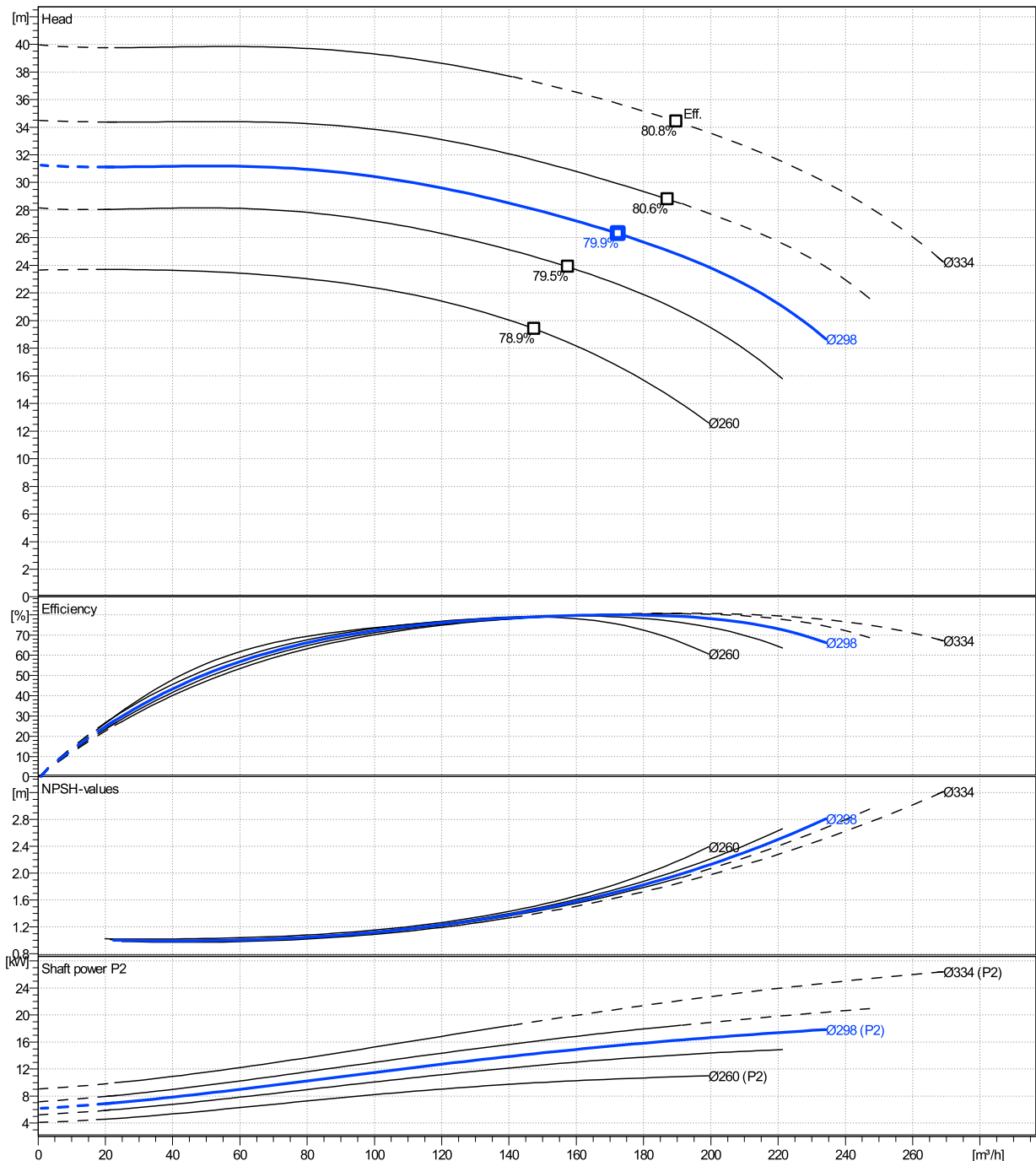
	Ø mm	Pump capacity			Pump head		Shaft power P2			Frequency		Hz	50
		Operating range Min. m³/h	Max. m³/h	η Max. m³/h	H(Q=0) m	η Max. m	P2(Q=0) kW	Max. kW	η Max. kW	Operating speed rpm	1475		
actual	298	22.4	234	173	31.3	26.3		17.9	15.5	Nominal flow	m³/h	0	
Min.	0	/	/	148	23.7	19.4		/	9.96	Nominal head	m	0	
Max.	334	/	/	190	40	34.4		/	22.1	Inlet pressure	kPa	0	
										Static head	m	0	

Power datas referred to:

hydr. Performance acceptance acc. To EN ISO 9906 Class Grade 3B

Water, pure [100%] ; 4°C; 1000kg/m³; 1.57mm²/s

MEI: 0,64 - according to Ecodesign Directive 2009/125/EC and Regulation (EU) No.547/2012



NSCF 100-315/185/L45VCC4

Dimensions

Company name
Contact
Phone number
e-mail address

Frame mounted
Standard coupling
3MAS 180 M B3 18,5 kW

Electrical and dimensional data refer to IE3 motor

Dimensions [mm]

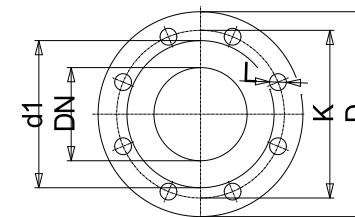
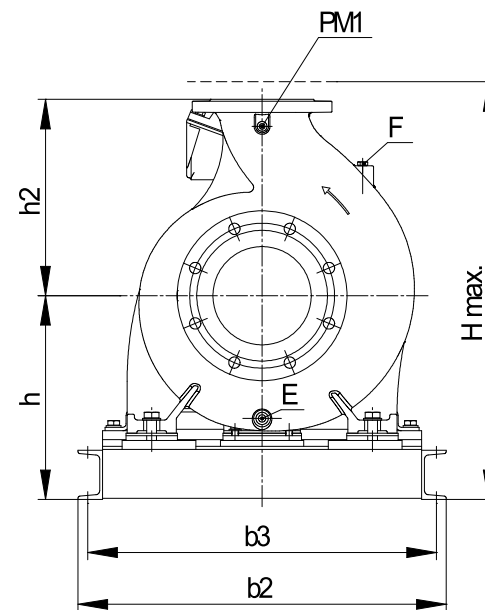
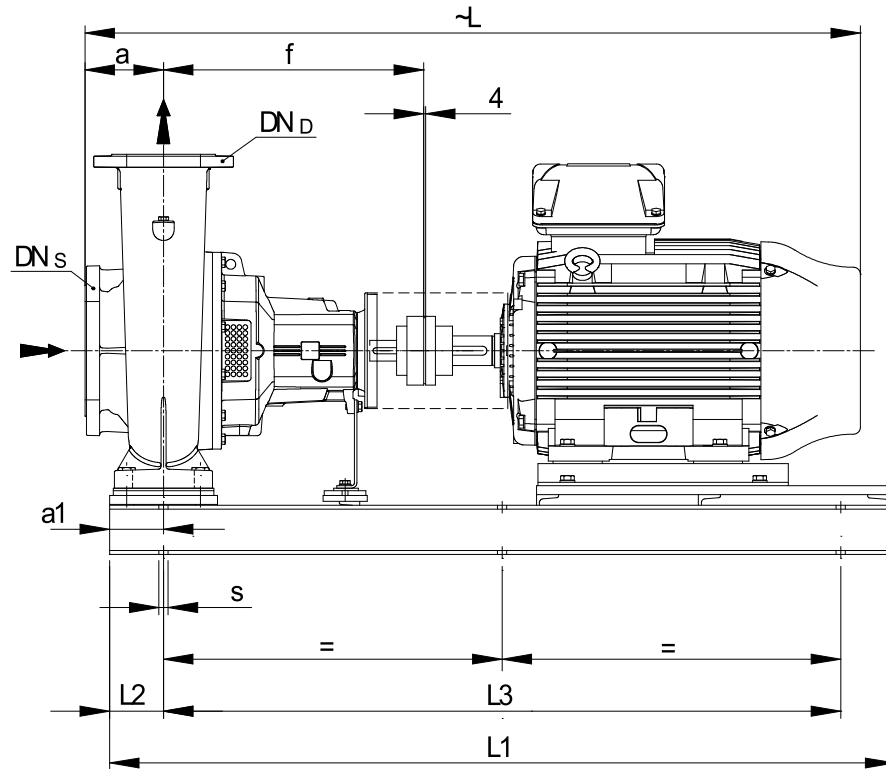
a	140
a1	110
b2	670
b3	630
CTO	0
DNd	100
DNs	125
E	3/8"
F	3/8"
f	470
Guard	194
h	385
h2	315
Hmax	700
L	1315
L1	1330
L2	110
L3	1110
PM1	1/4"
s	6xØ19
Trim	0
Volumen	0.61674

Weight

Total weight	355.1 kg
---------------------	-----------------

Connections

Suction nozzle		Discharge nozzle	
DN125		DN100	
PN10/16		PN10/16	
EN1092-2		EN1092-2	
C	26	C	24
D	255	D	230
d1	184	d1	157
K	210	K	180
L	19	L	19
z	8	z	8



Value C, D may vary from Standard

Dimensions and weight without obligation

Project Xylect-20100489
Block NSCF 100-315/300/L45VCC4

Created by
Created on 12/14/2024

Last update 12/14/2024