

NSCF 100-315/300/L45VCC4

Technical data

Company name
Contact
Phone number
e-mail address

Operating data				
1	Pumpe type	Single head pump	Fluid	Water, pure
2	No. of pumps	1	Operating temperature t A	°C 4
3	Nominal flow	m³/h 0	Max / Min Operating Temperature mech. Seal	°C 120 / -25
4	Nominal head	m 0	pH-value at t A	7
5	Static head	m 0	Density at t A	kg/m³ 1000
6	Inlet pressure	kPa 0	Kin. viscosity at t A	mm²/s 1.569
7	Environmental temperature	°C 20	Vapor pressure at t A	kPa 100
8	Available system NPSH	m 0	Altitude	0

Pump data				
9	Lubrication	Standard, Grease lubrication [Std]		
10	Execution	Standard coupling		
11	Design	Horizontal		
12	Operating speed	1475 rpm	Stages	1
13	Suction nozzle	DN125 / PN10/16 / EN1092-2	Impeller Ø	Max. mm 334
14	Discharge nozzle	DN100 / PN10/16 / EN1092-2		designed mm 334
15	Max. casing pressure	kPa	Flow	Min. mm 260
16	Max. working pressure	kPa 392		Nominal m³/h
17	Impeller type	Radial impeller		Max- m³/h 269.1
18	Head H(Q=0)	m 40	Head	Min- m³/h 24.9
19	Max. shaft power	kW 26.4		Nominal m
20	Pump weight	kg 116	at Qmax m 24.3	at Qmin m 39.8
21	Total weight	kg 417.9	Shaft power kW	Efficiency %
			NPSH 3%	m

Materials				
Pump		Shaft Seal		
22			Single mechanical seal, without shaft sleeve	
23	Volute Casing	Cast Iron, EN 1561 - GJL-250, ASTM Class 35		eMG12 - Ø38mm
24	Impeller	Cast Iron, EN 1561 - GJL-200, ASTM Class 30		BQ7EGG-WA
25	Casing Cover	Cast Iron, EN 1561 - GJL-250, ASTM Class 35		Mechanical seal diameter 38 mm
26	Shaft	Stainless steel, 1.4057, AISI 431		1. Rotating ring Carbon graphite resin impregnated
27	Wear ring	Stainless steel, 1.4301, AISI 304		2. Stationary ring SiC, silicon carbide, sintered press.less
28	Impeller lock nut and washer	A4 (1.4401)		3. Secondary seal Ethylene propylene rubber (EPDM)
29	Impeller key	Stainless steel, 1.4571, AISI 316Ti		4. Springs CrNiMo - Steel
30	Fill and drain plugs	Galvanized carbon steel, EN 10277-3, AISI 1213 / 1215		5. Others EPDM - WRAS
31	Bearing bracket	Cast Iron, EN 1561 - GJL-250, ASTM Class 35		Gaskets of the pump Ethylene propylene rubber (EPDM)
32				
33				
34				
35				
36				
37				
38				
39				
40				
41				

Motor data		Electrical and dimensional data refer to IE3 motor		Coupling	
42	Manufacturer	Lowara		Manufacturer	Flender
43	Specific design	IE3 3ph Surface Motor - Premium Efficiency		Series	Standard Coupling - N-EUPEX - Type B
44	Type	3MAS 200 L B3 30 kW		Shaft diameter	Pump 32 mm Motor 55 mm
45	Rated power	30 kW	Rated current 53.3 A	Frame size	125
46	Nominal speed	1475 rpm	Rated voltage 400 V	Spacer length	mm 4
47	Frame size	200 L	Service factor 1	Weight	kg 5.2
48	Weight	kg 207.1	Degree of protection IP55	Coupling protection	GR.COUPLGUARD ES32-190-16 A4 1.8 kg

Base plate		Remarks	
49	Name	BASEFRAME_NSC80-3_C00	
50	Weight	kg 87.8	

NSCF 100-315/300/L45VCC4

Performance curve

Company name
Contact
Phone number
e-mail address

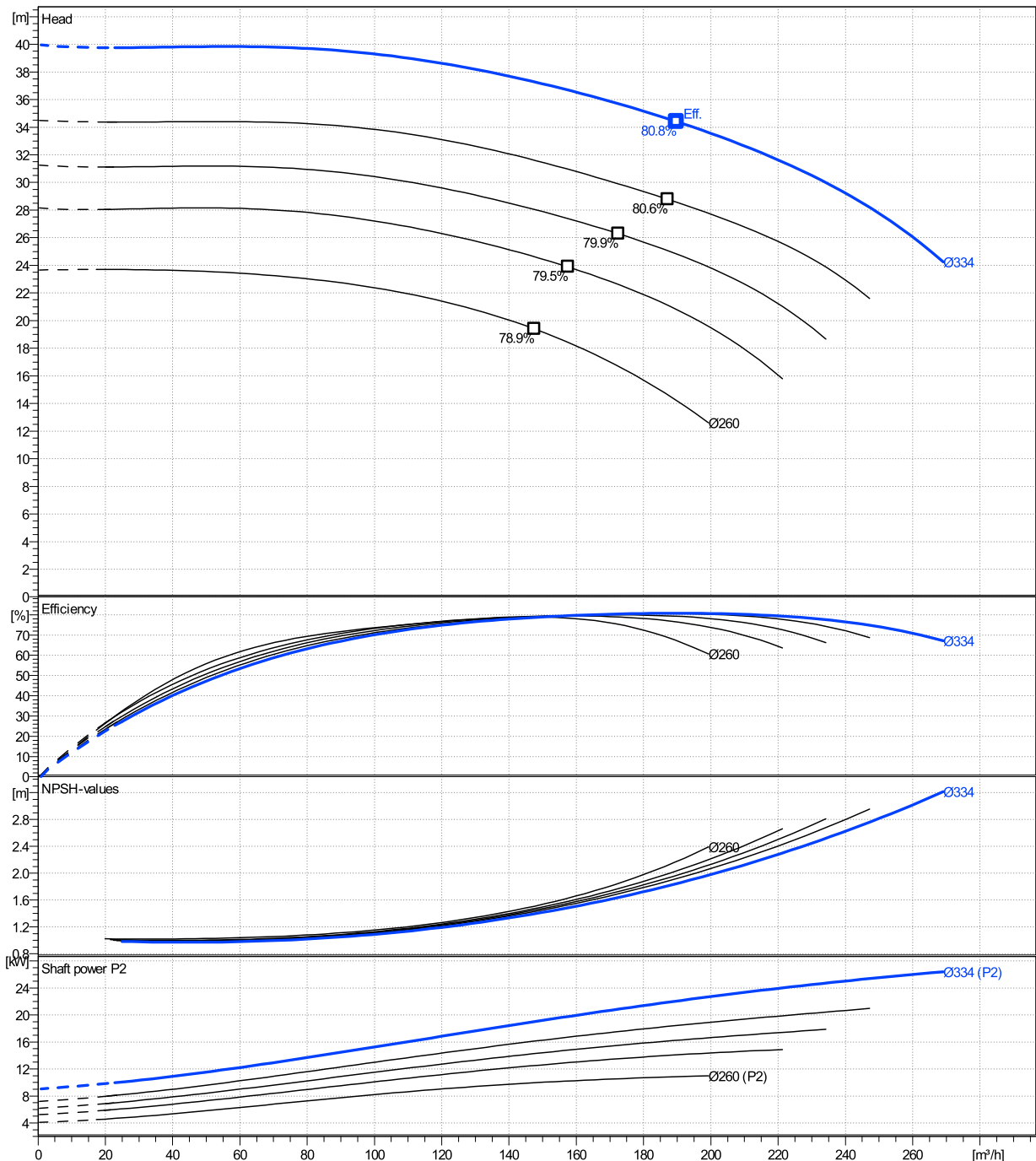
	Ø mm	Pump capacity			Pump head		Shaft power P2			Frequency		Hz	50	
		Operating range Min. m³/h	Max. m³/h	η Max. m³/h	H(Q=0) m	η Max. m	P2(Q=0) kW	Max. kW	η Max. kW	Operating speed rpm	1475			
actual	334	24.9	269	190	40	34.4	26.4	22.1	Nominal flow	m³/h	0	Nominal head	m	0
Min.	0	/	/	148	23.7	19.4	/	9.96	Inlet pressure	kPa	0	Static head	m	0
Max.	334	/	/	190	40	34.4	/	22.1						

Power datas referred to:

hydr. Performance acceptance acc. To EN ISO 9906 Class Grade 3B

Water, pure [100%] ; 4°C; 1000kg/m³; 1.57mm²/s

MEI: 0,64 - according to Ecodesign Directive 2009/125/EC and Regulation (EU) No.547/2012



NSCF 100-315/300/L45VCC4

Dimensions

Company name
Contact
Phone number
e-mail address

Frame mounted
Standard coupling
3MAS 200 L B3 30 kW

Electrical and dimensional data refer to IE3 motor

Dimensions [mm]

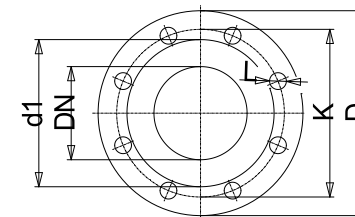
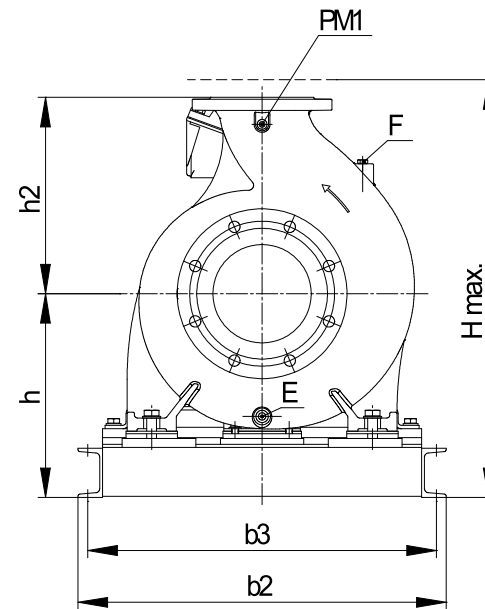
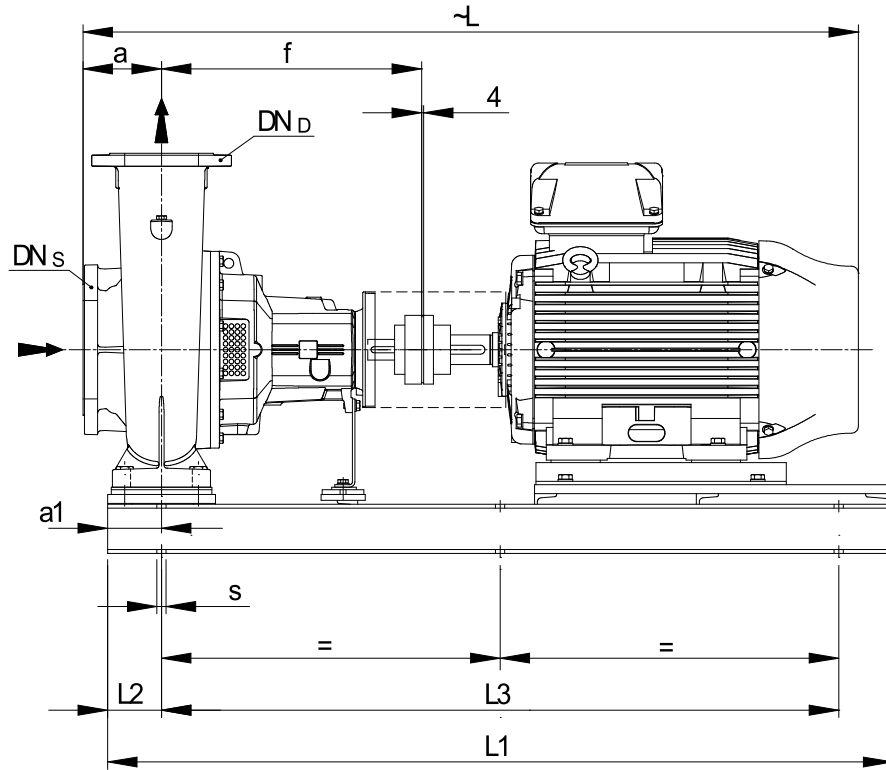
a	140
a1	110
b2	560
b3	520
CTO	0
DNd	100
DNs	125
E	3/8"
F	3/8"
f	470
Guard	194
h	355
h2	315
Hmax	670
L	1395
L1	1350
L2	110
L3	1130
PM1	1/4"
s	6xØ19
Trim	0
Volumen	0.5234

Weight

Total weight	417.9 kg
---------------------	-----------------

Connections

Suction nozzle		Discharge nozzle	
DN125		DN100	
PN10/16		PN10/16	
EN1092-2		EN1092-2	
C	26	C	24
D	255	D	230
d1	184	d1	157
K	210	K	180
L	19	L	19
z	8	z	8



Value C, D may vary from Standard

Dimensions and weight without obligation

Project Xylect-20100489
Block NSCF 100-315/300/L45VCC4

Created by
Created on 12/14/2024

Last update 12/14/2024