

# NSCF 100-400/370/L45VCC4

## Technical data

Company name  
Contact  
Phone number  
e-mail address

Operating data					
1	Pumpe type	Single head pump	Fluid	Water, pure	
2	No. of pumps	1	Operating temperature t A	°C	4
3	Nominal flow	m <sup>3</sup> /h 0	Max / Min Operating Temperature mech. Seal	°C	120 / -25
4	Nominal head	m 0	pH-value at t A		7
5	Static head	m 0	Density at t A	kg/m <sup>3</sup>	1000
6	Inlet pressure	kPa 0	Kin. viscosity at t A	mm <sup>2</sup> /s	1.569
7	Environmental temperature	°C 20	Vapor pressure at t A	kPa	100
8	Available system NPSH	m 0	Altitude		0

Pump data					
9	Lubrication	Standard, Grease lubrication [Std]			
10	Execution	Standard coupling			
11	Design	Horizontal			
12	Operating speed	1480 rpm	Stages	1	
13	Suction nozzle	DN125 /	PN10/16 /	EN1092-2	
14	Discharge nozzle	DN100 /	PN10/16 /	EN1092-2	
15	Max. casing pressure	kPa		Impeller Ø	Max. mm 420
16	Max. working pressure	kPa 534			designed mm 397
17	Impeller type	Radial impeller			Min. mm 375
18	Head H(Q=0)	m 54		Flow	Nominal m <sup>3</sup> /h
19	Max. shaft power	kW 36.5			Max- m <sup>3</sup> /h 285
20	Pump weight	kg 178			Min- m <sup>3</sup> /h 28.7
21	Total weight	kg 577.5		Head	Nominal m
					at Qmax m 32.9
					at Qmin m 53.7
				Shaft power	kW
				Efficiency	%
				NPSH 3%	m

Materials					
22		<b>Pump</b>		<b>Shaft Seal</b>	
23	Volute Casing	Cast Iron, EN 1561 - GJL-250, ASTM Class 35		Single mechanical seal, without shaft sleeve	
24	Impeller	Cast Iron, EN 1561 - GJL-200, ASTM Class 30		eMG12 - Ø48mm	BQ7EGG-WA
25	Casing Cover	Cast Iron, EN 1561 - GJL-250, ASTM Class 35		Mechanical seal diameter	48 mm
26	Shaft	Stainless steel, 1.4057, AISI 431		1. Rotating ring	Carbon graphite resin impregnated
27	Wear ring	Stainless steel, 1.4301, AISI 304		2. Stationary ring	SiC, silicon carbide, sintered press. less
28	Impeller lock nut and washer	A4 (1.4401)		3. Secondary seal	Ethylene propylene rubber (EPDM)
29	Impeller key	Stainless steel, 1.4571, AISI 316Ti		4. Springs	CrNiMo - Steel
30	Fill and drain plugs	Galvanized carbon steel, EN 10277-3, AISI 1213 / 1215		5. Others	EPDM - WRAS
31	Bearing bracket	Cast Iron, EN 1561 - GJL-250, ASTM Class 35		Gaskets of the pump	Ethylene propylene rubber (EPDM)
32					
33					
34					
35					
36					
37					
38					
39					
40					
41					

Motor data				Coupling			
Electrical and dimensional data refer to IE3 motor							
42	Manufacturer	Lowara		Manufacturer	Flender		
43	Specific design	IE3 3ph Surface Motor - Premium Efficiency		Series	Standard Coupling - N-EUPEX - Type B		
44	Type	3MAS 225 S B3 37 kW		Shaft diameter	Pump 42 mm	Motor 60 mm	
45	Rated power	37 kW	Rated current 66.6 A	Frame size	140		
46	Nominal speed	1480 rpm	Rated voltage 400 V	Spacer length	mm 4		
47	Frame size	225 S	Service factor 1	Weight	kg 5.6		
48	Weight	kg 241.2	Degree of protection IP55	Coupling protection	GR.COUPLGUARD ES42-230-23 A4 3.4 kg		

Base plate			Remarks			
49	Name	BASEFRAME_NSC80-7_C00				
50	Weight	kg 149.3				

# NSCF 100-400/370/L45VCC4

## Performance curve

Company name  
Contact  
Phone number  
e-mail address

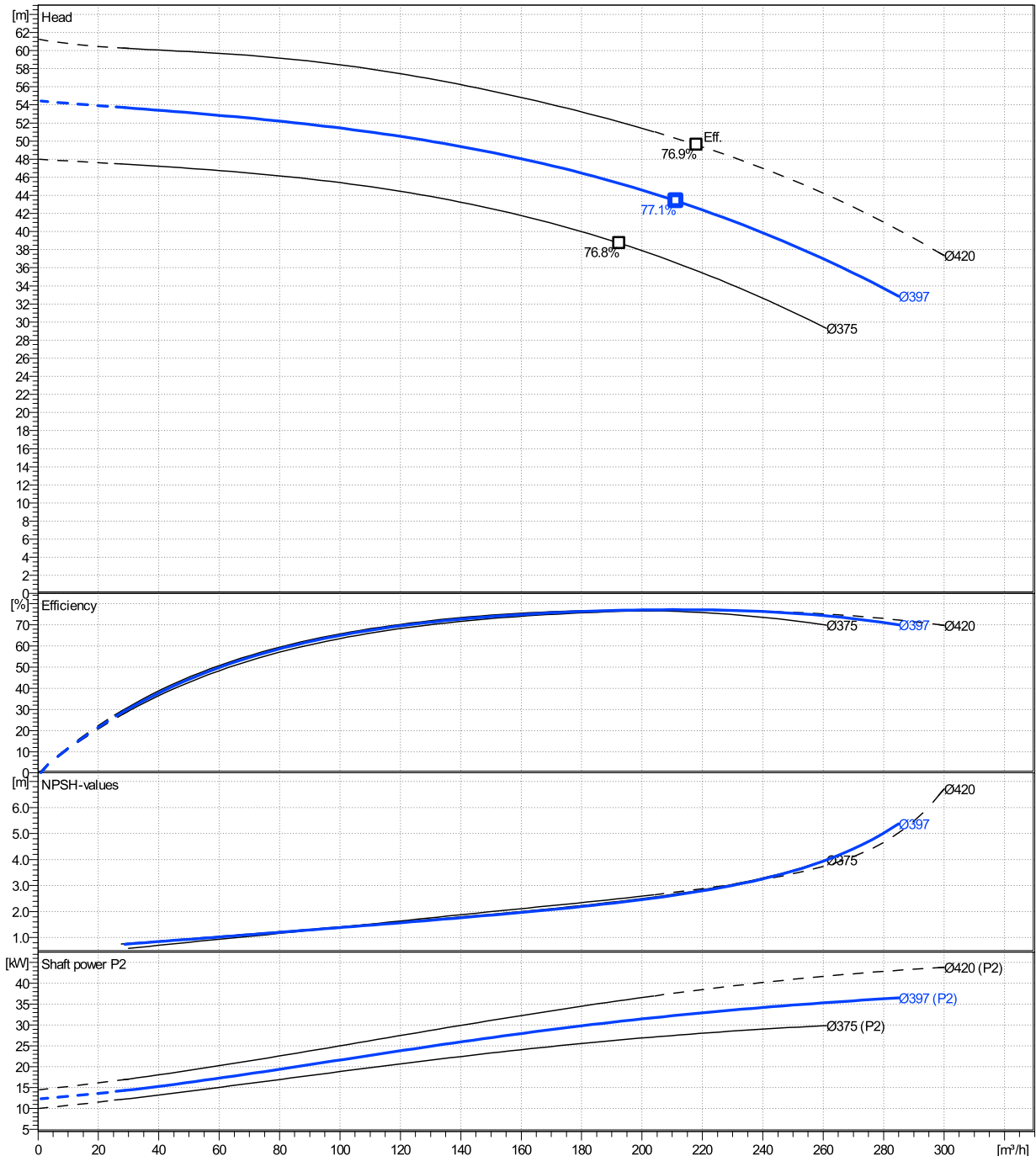
	Ø mm	Pump capacity			Pump head		Shaft power P2			Frequency		Hz	50
		Operating range Min. m³/h	Max. m³/h	η Max. m³/h	H(Q=0) m	η Max. m	P2(Q=0) kW	Max. kW	η Max. kW	Operating speed rpm	1480		
actual	397	28.7	285	211	54.4	43.4		36.5	32.3	Nominal flow	m³/h	0	
Min.	0	/	/	192	48	38.7		/	26.4	Nominal head	m	0	
Max.	420	/	/	218	61.3	49.6		/	38.3	Inlet pressure	kPa	0	
										Static head	m	0	

**Power datas referred to:**

hydr. Performance acceptance acc. To EN ISO 9906 Class Grade 3B

Water, pure [100%] ; 4°C; 1000kg/m³; 1.57mm²/s

MEI: 0,51 - according to Ecodesign Directive 2009/125/EC and Regulation (EU) No.547/2012



# NSCF 100-400/370/L45VCC4

## Dimensions

Company name  
Contact  
Phone number  
e-mail address

Frame mounted  
Standard coupling  
3MAS 225 S B3 37 kW

Electrical and dimensional data refer to IE3 motor

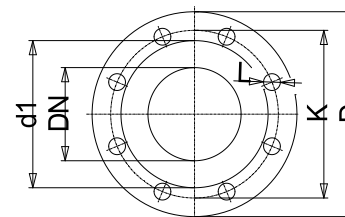
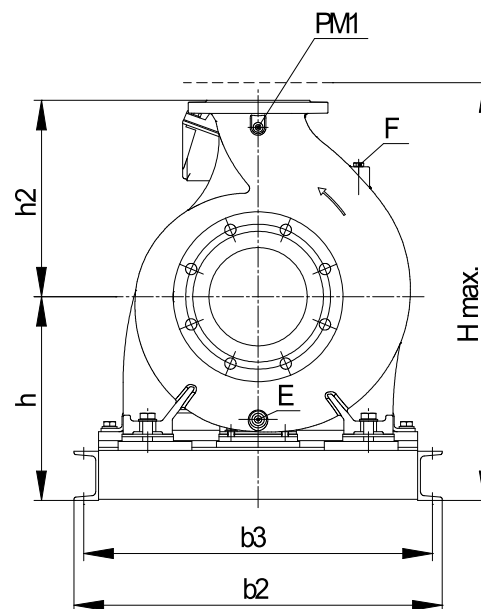
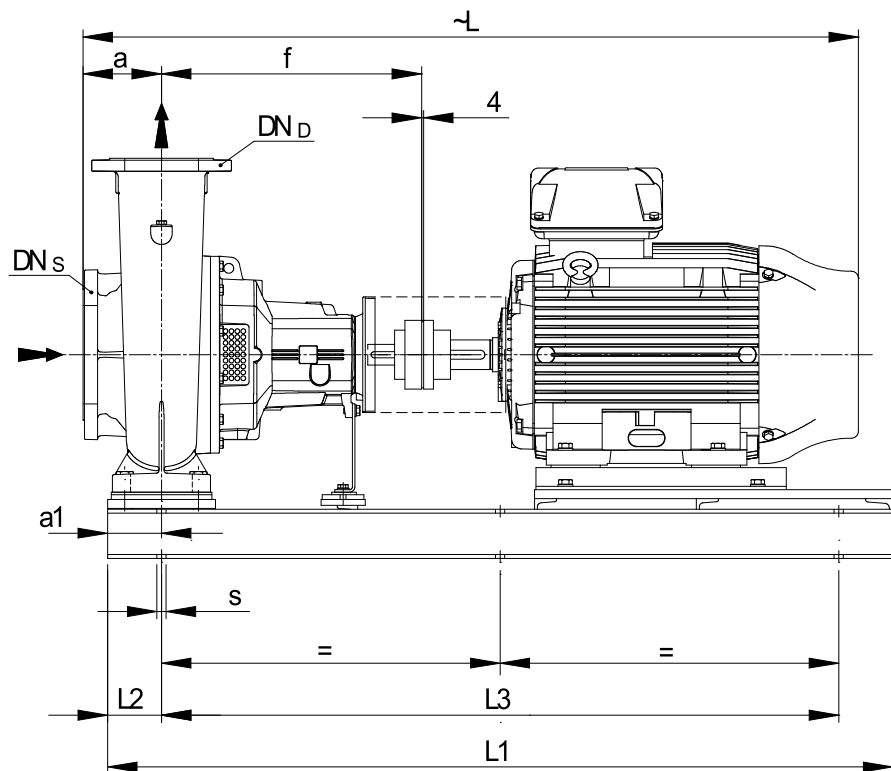
Dimensions		[ mm ]	
a	140		
a1	110		
b2	750		
b3	710		
CTO	0		
DNd	100		
DNs	125		
E	3/8"		
F	3/8"		
f	530		
Guard	254		
h	415		
h2	355		
Hmax	770		
L	1515		
L1	1600		
L2	110		
L3	1380		
PM1	1/4"		
s	6xØ19		
Trim	0		
Volumen	0.87491		

Weight	
Total weight	577.5 kg

Connections			
Suction nozzle		Discharge nozzle	
DN125		DN100	
PN10/16		PN10/16	
EN1092-2		EN1092-2	
C	26	C	24
D	255	D	230
d1	184	d1	157
K	210	K	180
L	19	L	19
z	8	z	8



Value C, D may vary from Standard

### Dimensions and weight without obligation

Project	Xylect-20101285	Created by		Last update	12/15/2024
Block	NSCF 100-400/450/L45VCC4	Created on	12/15/2024		