

NSCF 150-250/110/L65VCC4

Technical data

Company name
Contact
Phone number
e-mail address

Operating data				
1	Pumpe type	Single head pump	Fluid	Water, pure
2	No. of pumps	1	Operating temperature t A	°C 4
3	Nominal flow	m ³ /h 0	Max / Min Operating Temperature mech. Seal	°C 120 / -25
4	Nominal head	m 0	pH-value at t A	7
5	Static head	m 0	Density at t A	kg/m ³ 1000
6	Inlet pressure	kPa 0	Kin. viscosity at t A	mm ² /s 1.569
7	Environmental temperature	°C 20	Vapor pressure at t A	kPa 100
8	Available system NPSH	m 0	Altitude	0

Pump data				
9	Lubrication	Standard, Grease lubrication [Std]		
10	Execution	Standard coupling		
11	Design	Horizontal		
12	Operating speed	975 rpm	Stages	1
13	Suction nozzle	DN200 / PN16 / EN1092-2	Impeller Ø	Max. mm 282
14	Discharge nozzle	DN150 / PN10/16 / EN1092-2		designed mm 282
15	Max. casing pressure	kPa	Flow	Min. mm 253
16	Max. working pressure	kPa 110.2		Nominal m ³ /h
17	Impeller type	Radial impeller		Max- m ³ /h 410
18	Head H(Q=0)	m 11	Head	Min- m ³ /h 40
19	Max. shaft power	kW 7.9		Nominal m
20	Pump weight	kg 180	at Qmax m 4.6	at Qmin m 11.1
21	Total weight	kg 378.3	Shaft power kW	Efficiency %
			NPSH 3%	m

Materials				
22		Pump	Shaft Seal	
23	Volute Casing	Cast Iron, EN 1561 - GJL-250, ASTM Class 35		Single mechanical seal, without shaft sleeve
24	Impeller	Cast Iron, EN 1561 - GJL-200, ASTM Class 30		eMG12 - Ø48mm BQ7EGG-WA
25	Casing Cover	Cast Iron, EN 1561 - GJL-250, ASTM Class 35		Mechanical seal diameter 48 mm
26	Shaft	Stainless steel, 1.4057, AISI 431		1. Rotating ring Carbon graphite resin impregnated
27	Wear ring	Stainless steel, 1.4301, AISI 304		2. Stationary ring SiC, silicon carbide, sintered press. less
28	Impeller lock nut and washer	A4 (1.4401)		3. Secondary seal Ethylene propylene rubber (EPDM)
29	Impeller key	Stainless steel, 1.4571, AISI 316Ti		4. Springs CrNiMo - Steel
30	Fill and drain plugs	Galvanized carbon steel, EN 10277-3, AISI 1213 / 1215		5. Others EPDM - WRAS
31	Bearing bracket	Cast Iron, EN 1561 - GJL-250, ASTM Class 35		Gaskets of the pump Ethylene propylene rubber (EPDM)
32				
33				
34				
35				
36				
37				
38				
39				
40				
41				

Motor data				Coupling			
42	Manufacturer	Lowara		Manufacturer	Flender		
43	Specific design	IE3 3ph Surface Motor - Premium Efficiency		Series	Standard Coupling - N-EUPEX - Type B		
44	Type	3MAS 160 L B3 11 kW		Shaft diameter	Pump 42 mm	Motor 42 mm	
45	Rated power	11 kW	Rated current 23 A	Frame size	110		
46	Nominal speed	975 rpm	Rated voltage 400 V	Spacer length	mm 4		
47	Frame size	160 L	Service factor 1	Weight	kg 3.3		
48	Weight	kg 92.4	Degree of protection IP55	Coupling protection	GR.COUPLGUARD ES42-230-16 A4		1.7 kg

Base plate			Remarks		
49	Name	BASEFRAME_NSC80-4_C00			
50	Weight	kg 100.9			

Project	Xylect-20101285	Created by		Last update	12/15/2024
Block	NSCF 150-250/300/L45VCC4	Created on	12/15/2024		

NSCF 150-250/110/L65VCC4

Performance curve

Company name
Contact
Phone number
e-mail address

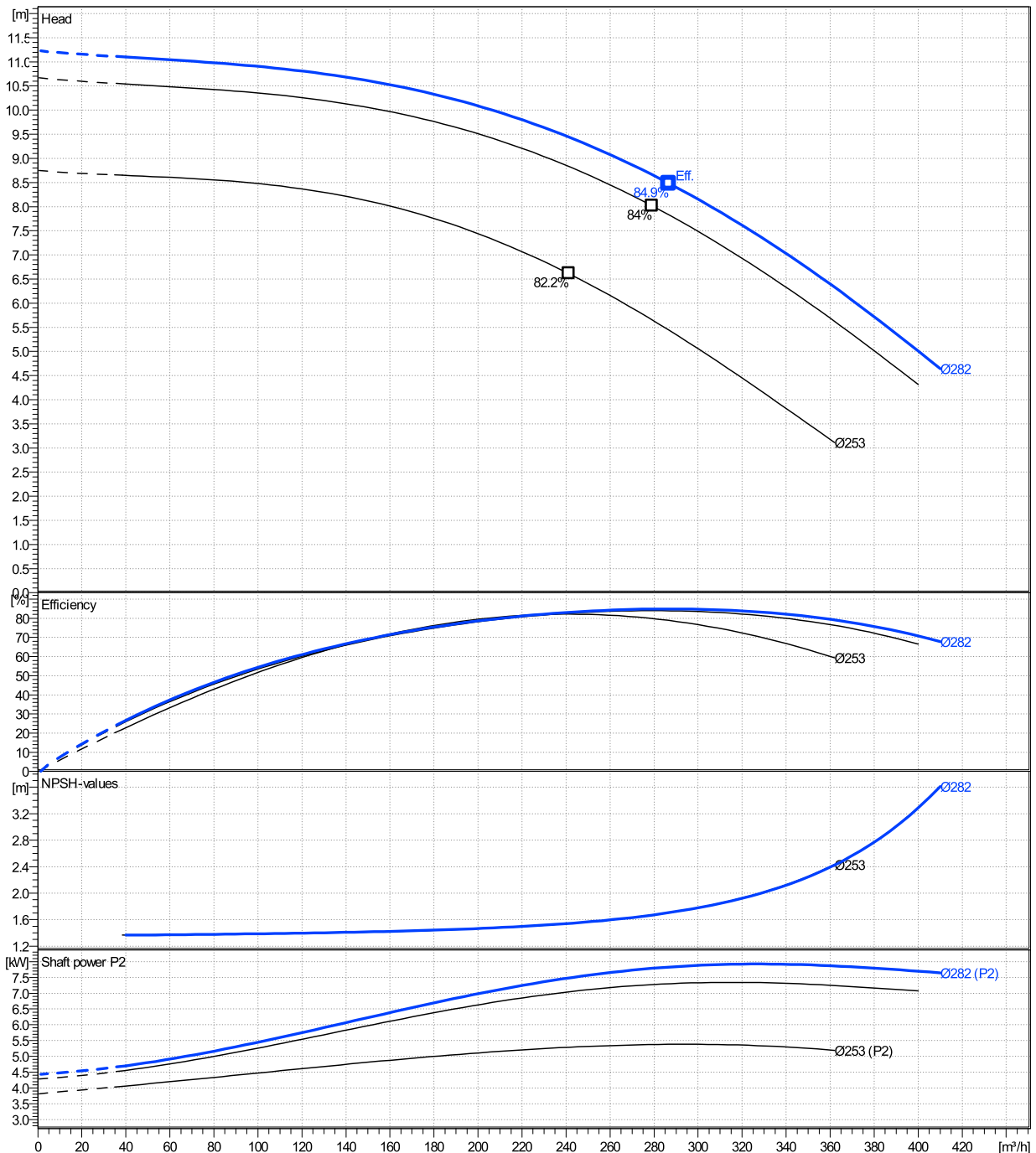
	Ø mm	Pump capacity Operating range			Pump head		Shaft power P2			Frequency	Hz	
		Min. m³/h	Max. m³/h	η Max. m³/h	H(Q=0) m	η Max. m	P2(Q=0) kW	Max. kW	η Max. kW	Operating speed	rpm	
actual	282	40	410	287	11.2	8.48	7.92	7.83	7.83	Nominal flow	m³/h	0
Min.	0	/	/	241	8.75	6.61	/	5.29	5.29	Nominal head	m	0
Max.	282	/	/	287	11.2	8.48	/	7.83	7.83	Inlet pressure	kPa	0
										Static head	m	0

Power datas referred to:

hydr. Performance acceptance acc. To EN ISO 9906 Class Grade 3B

Water, pure [100%] ; 4°C; 1000kg/m³; 1.57mm²/s

MEI: 0,64 - according to Ecodesign Directive 2009/125/EC and Regulation (EU) No.547/2012



NSCF 150-250/110/L65VCC4

Dimensions

Company name
Contact
Phone number
e-mail address

Frame mounted
Standard coupling
3MAS 160 L B3 11 kW

Electrical and dimensional data refer to IE3 motor

Dimensions [mm]

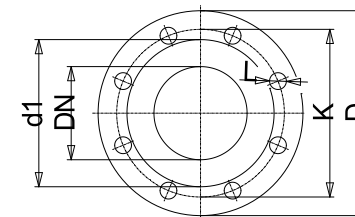
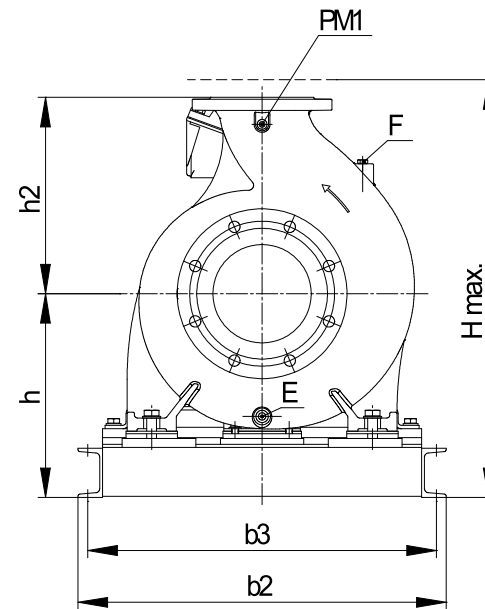
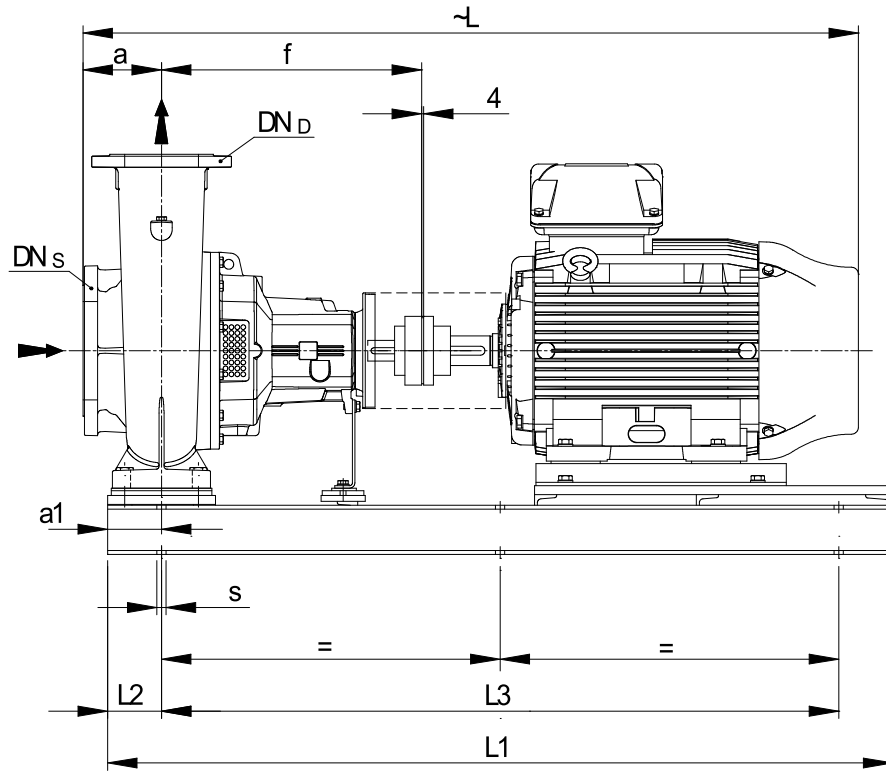
a	160
a1	110
b2	670
b3	630
CTO	0
DNd	150
DNs	200
E	3/8"
F	3/8"
f	530
Guard	224
h	385
h2	400
Hmax	785
L	1349
L1	1430
L2	110
L3	1210
PM1	1/4"
s	6xØ19
Trim	0
Volumen	0.70951

Weight

Total weight	378.3 kg
---------------------	-----------------

Connections

Suction nozzle		Discharge nozzle	
DN200		DN150	
PN16		PN10/16	
EN1092-2		EN1092-2	
C	30	C	26
D	345	D	285
d1	266	d1	211
K	295	K	240
L	23	L	23
z	12	z	8



Value C, D may vary from Standard

Dimensions and weight without obligation

Project	Xylect-20101285	Created by		Last update	12/15/2024
Block	NSCF 150-250/300/L45VCC4	Created on	12/15/2024		