

NSCF 200-400/300/L65VDC4

Technical data

Company name
Contact
Phone number
e-mail address

Operating data				
1	Pumpe type	Single head pump	Fluid	Water, pure
2	No. of pumps	1	Operating temperature t A	°C 4
3	Nominal flow	m ³ /h 0	Max / Min Operating Temperature mech. Seal	°C 120 / -25
4	Nominal head	m 0	pH-value at t A	7
5	Static head	m 0	Density at t A	kg/m ³ 1000
6	Inlet pressure	kPa 0	Kin. viscosity at t A	mm ² /s 1.569
7	Environmental temperature	°C 20	Vapor pressure at t A	kPa 100
8	Available system NPSH	m 0	Altitude	0

Pump data				
9	Lubrication	Advanced, Grease lubrication [Std]		
10	Execution	Standard coupling		
11	Design	Horizontal		
12	Operating speed	985 rpm	Stages	1
13	Suction nozzle	DN250 / PN16	/ EN1092-2	
14	Discharge nozzle	DN200 / PN16	/ EN1092-2	
15	Max. casing pressure	kPa	Impeller Ø	Max. mm 409
16	Max. working pressure	kPa 216.4		designed mm 376
17	Impeller type	Radial impeller		
18	Head H(Q=0)	m 22	Flow	Min. mm 376
19	Max. shaft power	kW 29.6		Nominal m ³ /h
20	Pump weight	kg 363	Head	Max- m ³ /h 611
21	Total weight	kg 786.0		Min- m ³ /h 96
			Shaft power	Nominal m
				at Qmax m 11.8
			Efficiency	at Qmin m 22
				Shaft power kW
			NPSH 3%	Efficiency %

Materials				
22		Pump	Shaft Seal	
23	Volute Casing	Ductile Iron, EN-GJS-400-15, ASTM A536 40-60-18		Single mechanical seal, without shaft sleeve
24	Impeller	Cast Iron, EN 1561 - GJL-200, ASTM Class 30		eMG12 - Ø70mm BQ7EGG-WA
25	Casing Cover	Ductile Iron, EN-GJS-400-15, ASTM A536 40-60-18		Mechanical seal diameter 70 mm
26	Shaft	Stainless steel, 1.4057, AISI 431		1. Rotating ring Carbon graphite resin impregnated
27	Wear ring	Stainless steel, 1.4301, AISI 304		2. Stationary ring SiC, silicon carbide, sintered press. less
28	Impeller lock nut and washer	A4 (1.4401)		3. Secondary seal Ethylene propylene rubber (EPDM)
29	Impeller key	Stainless steel, 1.4571, AISI 316Ti		4. Springs CrNiMo - Steel
30	Fill and drain plugs	Galvanized carbon steel, EN 10277-3, AISI 1213 / 1215		5. Others EPDM - WRAS
31	Bearing bracket	Cast Iron, EN 1561 - GJL-250, ASTM Class 35		Gaskets of the pump Ethylene propylene rubber (EPDM)
32				
33				
34				
35				
36				
37				
38				
39				
40				
41				

Motor data				Coupling			
42	Manufacturer	Lowara		Manufacturer	Flender		
43	Specific design	IE3 3ph Surface Motor - Premium Efficiency		Series	Standard Coupling - N-EUPEX - Type B		
44	Type	3MAS 225 M B3 30 kW		Shaft diameter	Pump 60 mm	Motor 60 mm	
45	Rated power	30 kW	Rated current 60.9 A	Frame size	140		
46	Nominal speed	985 rpm	Rated voltage 400 V	Spacer length	mm 4		
47	Frame size	225 M	Service factor 1	Weight	kg 5.6		
48	Weight	kg 241.3	Degree of protection IP55	Coupling protection	GR.COUPLGUARD ES60-310-23 A4		3.5 kg

Base plate			Remarks		
49	Name	FRAME 60NSC80A-400-225			
50	Weight	kg 172.6			

NSCF 200-400/300/L65VDC4

Performance curve

Company name
Contact
Phone number
e-mail address

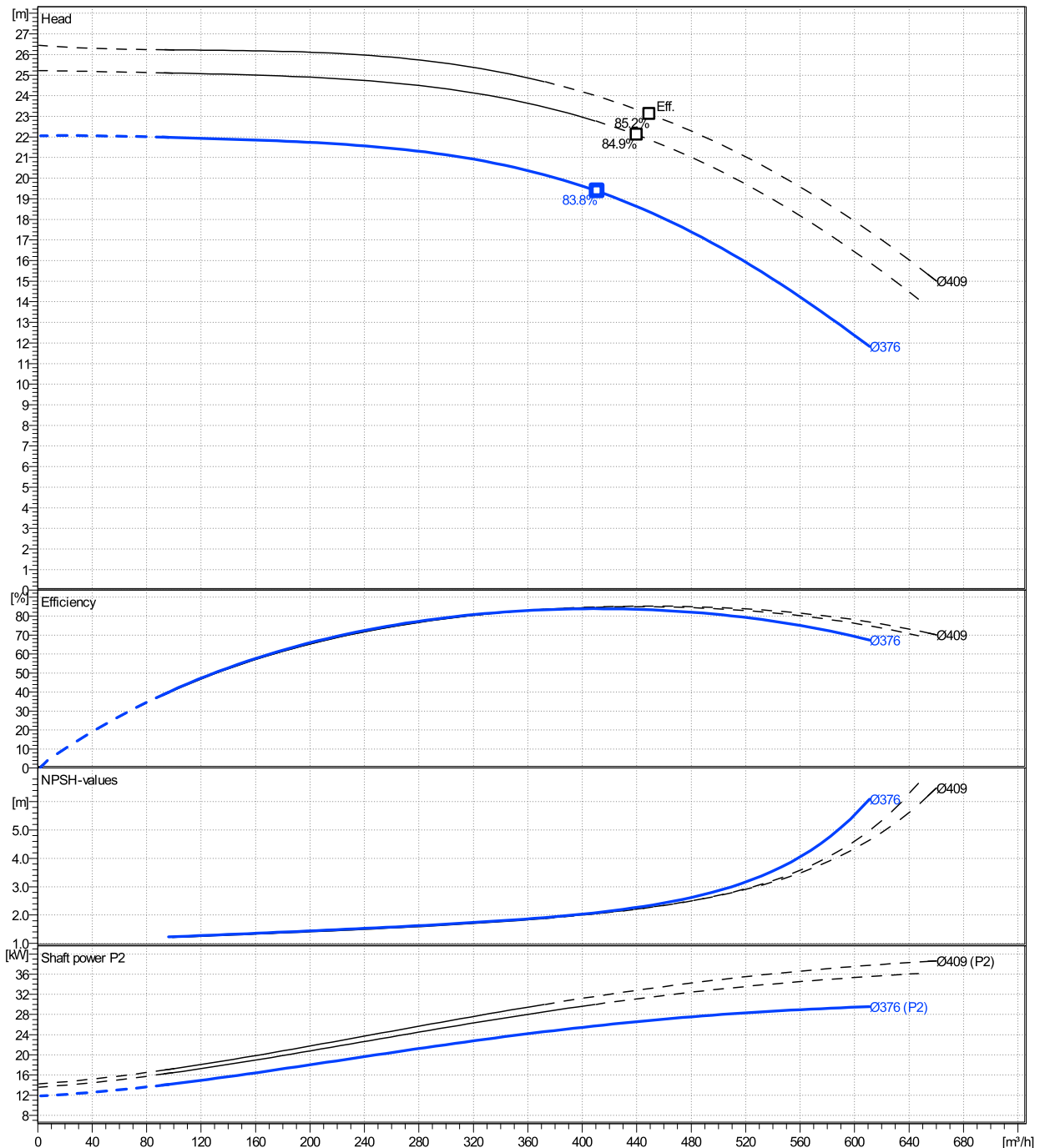
	Ø mm	Pump capacity			Pump head		Shaft power P2			Frequency	Hz
		Operating range Min. m³/h	Max. m³/h	η Max. m³/h	H(Q=0) m	η Max. m	P2(Q=0) kW	Max. kW	η Max. kW	Operating speed	rpm
actual	376	96	611	411	22.1	19.4	29.6	25.8	Nominal flow	m³/h	0
Min.	0	/	/	411	22.1	19.4	/	25.8	Nominal head	m	0
Max.	409	/	/	449	26.4	23.1	/	33.2	Inlet pressure	kPa	0
									Static head	m	0

Power datas referred to:

hydr. Performance acceptance acc. To EN ISO 9906 Class Grade 2B

Water, pure [100%] ; 4°C; 1000kg/m³; 1.57mm²/s

MEI: 0,50 - according to Ecodesign Directive 2009/125/EC and Regulation (EU) No.547/2012



NSCF 200-400/300/L65VDC4

Dimensions

Company name
Contact
Phone number
e-mail address

Frame mounted
Standard coupling
3MAS 225 M B3 30 kW

Electrical and dimensional data refer to IE3 motor

Dimensions [mm]

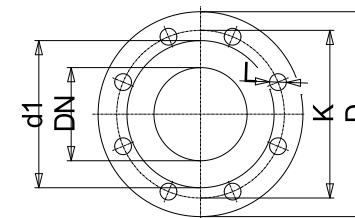
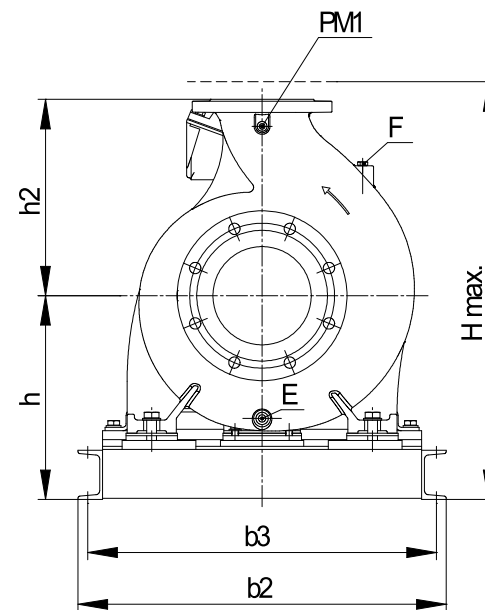
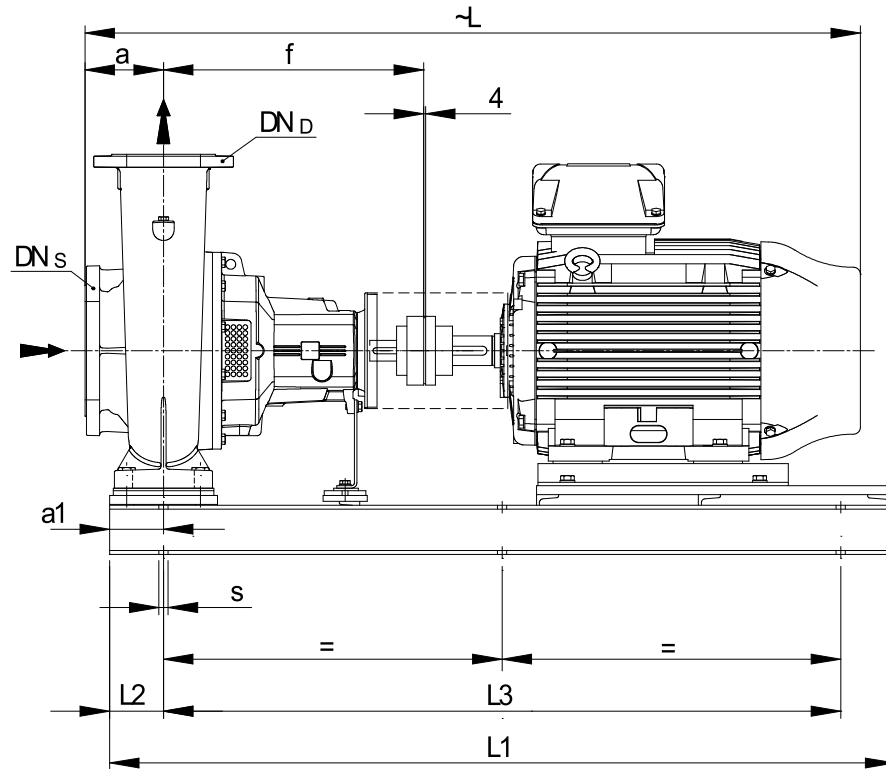
a	180
a1	165
b2	860
b3	810
CTO	0
DNd	200
DNs	250
E	1/2"
F	-
f	770
Guard	284
h	545
h2	500
Hmax	1045
L	1860.5
L1	1600
L2	165
L3	1270
PM1	1/2"
s	6xØ19
Trim	0
Volumen	1.672

Weight

Total weight	786 kg
--------------	--------

Connections

Suction nozzle		Discharge nozzle	
DN250		DN200	
PN16		PN16	
EN1092-2		EN1092-2	
C	32	C	30
D	405	D	345
d1	319	d1	266
K	355	K	295
L	28	L	23
z	12	z	12



Value C, D may vary from Standard

Dimensions and weight without obligation

Project Xylect-20100394
Block NSCF 200-400/1600/L45VDC4 E4

Created by
Created on 12/14/2024

Last update 12/14/2024