

NSCF 250-315/220/L65VDC4

Technical data

Company name
Contact
Phone number
e-mail address

Operating data				
1	Pumpe type	Single head pump	Fluid	Water, pure
2	No. of pumps	1	Operating temperature t A	°C 4
3	Nominal flow	m ³ /h 0	Max / Min Operating Temperature mech. Seal	°C 120 / -25
4	Nominal head	m 0	pH-value at t A	7
5	Static head	m 0	Density at t A	kg/m ³ 1000
6	Inlet pressure	kPa 0	Kin. viscosity at t A	mm ² /s 1.569
7	Environmental temperature	°C 20	Vapor pressure at t A	kPa 100
8	Available system NPSH	m 0	Altitude	0

Pump data				
9	Lubrication	Standard, Grease lubrication [Std]		
10	Execution	Standard coupling		
11	Design	Horizontal		
12	Operating speed	980 rpm	Stages	1
13	Suction nozzle	DN300 / PN16	/ EN1092-2	
14	Discharge nozzle	DN250 / PN16	/ EN1092-2	
15	Max. casing pressure	kPa	Impeller Ø	Max. mm 321
16	Max. working pressure	kPa 129.2		designed mm 310
17	Impeller type	Radial impeller		
18	Head H(Q=0)	m 13	Flow	Min. mm 267
19	Max. shaft power	kW 20.3		Nominal m ³ /h
20	Pump weight	kg 316		Max- m ³ /h 796
21	Total weight	kg 670.6	Min- m ³ /h 177	
			Head	Nominal m
				at Qmax m 6.6
				at Qmin m 12.7
			Shaft power	kW
			Efficiency	%
			NPSH 3%	m

Materials				
22		Pump	Shaft Seal	
23	Volute Casing	Ductile Iron, EN-GJS-400-15, ASTM A536 40-60-18		Single mechanical seal, without shaft sleeve
24	Impeller	Cast Iron, EN 1561 - GJL-200, ASTM Class 30		eMG12 - Ø48mm BQ7EGG-WA
25	Casing Cover	Ductile Iron, EN-GJS-400-15, ASTM A536 40-60-18		Mechanical seal diameter 48 mm
26	Shaft	Stainless steel, 1.4057, AISI 431		1. Rotating ring Carbon graphite resin impregnated
27	Wear ring	Stainless steel, 1.4301, AISI 304		2. Stationary ring SiC, silicon carbide, sintered press. less
28	Impeller lock nut and washer	A4 (1.4401)		3. Secondary seal Ethylene propylene rubber (EPDM)
29	Impeller key	Stainless steel, 1.4571, AISI 316Ti		4. Springs CrNiMo - Steel
30	Fill and drain plugs	Galvanized carbon steel, EN 10277-3, AISI 1213 / 1215		5. Others EPDM - WRAS
31	Bearing bracket	Cast Iron, EN 1561 - GJL-250, ASTM Class 35		Gaskets of the pump Ethylene propylene rubber (EPDM)
32				
33				
34				
35				
36				
37				
38				
39				
40				
41				

Motor data				Coupling			
42	Manufacturer	Lowara		Manufacturer	Flender		
43	Specific design	IE3 3ph Surface Motor - Premium Efficiency		Series	Standard Coupling - N-EUPEX - Type B		
44	Type	3MAS 200 L B3 22 kW		Shaft diameter	Pump 42 mm	Motor 55 mm	
45	Rated power	22 kW	Rated current 43.7 A	Frame size	125		
46	Nominal speed	980 rpm	Rated voltage 400 V	Spacer length	mm 4		
47	Frame size	200 L	Service factor 1	Weight	kg 5.2		
48	Weight	kg 184.0	Degree of protection IP55	Coupling protection	GR.COUPLGUARD ES42-230-16 A4		1.7 kg

Base plate			Remarks		
49	Name	BASEFRAME_NSC80-11_C00			
50	Weight	kg 163.7			

NSCF 250-315/220/L65VDC4

Performance curve

Company name
Contact
Phone number
e-mail address

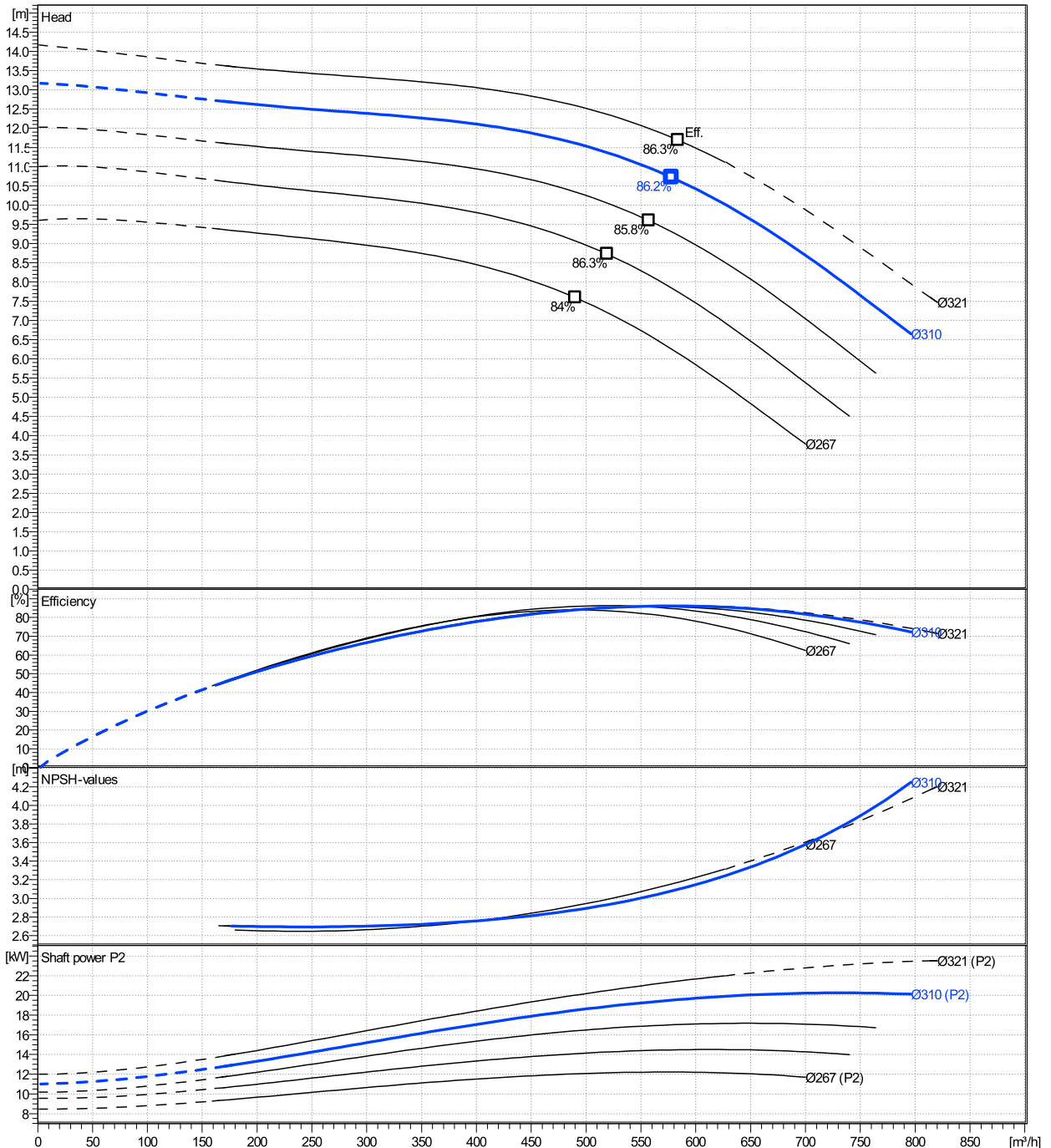
	Ø mm	Pump capacity			Pump head		Shaft power P2			Frequency	Hz
		Operating range Min. m³/h	Max. m³/h	η Max. m³/h	H(Q=0) m	η Max. m	P2(Q=0) kW	Max. kW	η Max. kW	Operating speed	rpm
actual	310	177	796	578	13.2	10.7	20.3	19.5	Nominal flow	m³/h	0
Min.	0	/	/	490	9.6	7.59	/	12	Nominal head	m	0
Max.	321	/	/	584	14.2	11.7	/	21.5	Inlet pressure	kPa	0
									Static head	m	0

Power datas referred to:

hydr. Performance acceptance acc. To EN ISO 9906 Class Grade 2B

Water, pure [100%] ; 4°C; 1000kg/m³; 1.57mm²/s

MEI: 0,62 - according to Ecodesign Directive 2009/125/EC and Regulation (EU) No.547/2012



NSCF 250-315/220/L65VDC4

Dimensions

Company name
Contact
Phone number
e-mail address

Frame mounted
Standard coupling
3MAS 200 L B3 22 kW

Electrical and dimensional data refer to IE3 motor

Dimensions [mm]

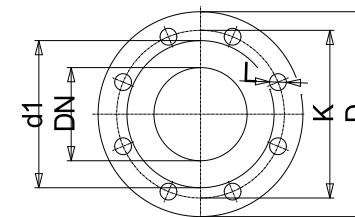
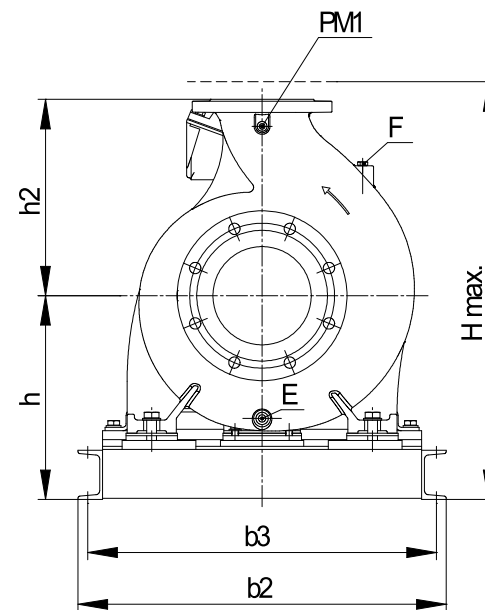
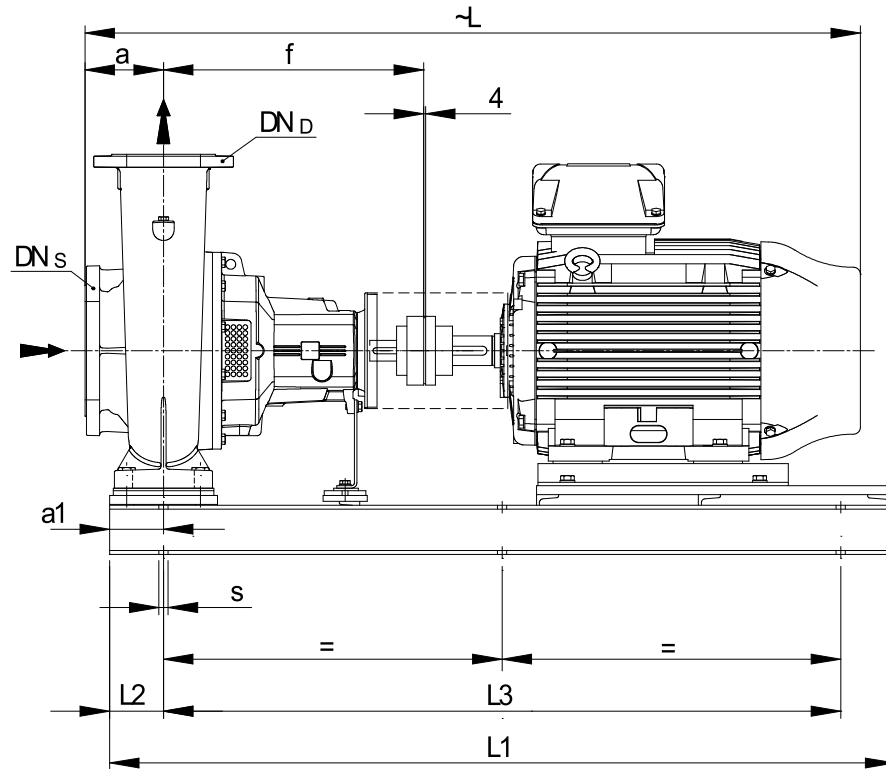
a	250
a1	165
b2	850
b3	810
CTO	0
DNd	250
DNs	300
E	1/2"
F	-
f	530
Guard	224
h	525
h2	500
Hmax	1025
L	1565
L1	1500
L2	165
L3	1170
PM1	1/2"
s	6xØ19
Trim	0
Volumen	1.3635

Weight

Total weight	670.6 kg
---------------------	-----------------

Connections

Suction nozzle		Discharge nozzle	
DN300		DN250	
PN16		PN16	
EN1092-2		EN1092-2	
C	32	C	32
D	485	D	405
d1	370	d1	319
K	410	K	355
L	28	L	28
z	12	z	12



Value C, D may vary from Standard

Dimensions and weight without obligation

Project	Xylect-20101285	Created by		Last update	12/15/2024
Block	NSCF 250-315/900/L45VDC4 E4	Created on	12/15/2024		