

NSCF 300-450/750/L65VDC4 E4

Technical data

Company name
Contact
Phone number
e-mail address

Operating data			
1	Pumpe type	Single head pump	Fluid Water, pure
2	No. of pumps	1	Operating temperature t A °C 4
3	Nominal flow	m ³ /h 0	Max / Min Operating Temperature mech. Seal °C 120 / -25
4	Nominal head	m 0	pH-value at t A 7
5	Static head	m 0	Density at t A kg/m ³ 1000
6	Inlet pressure	kPa 0	Kin. viscosity at t A mm ² /s 1.569
7	Environmental temperature	°C 20	Vapor pressure at t A kPa 100
8	Available system NPSH	m 0	Altitude 0

Pump data			
9	Lubrication	Advanced, Grease lubrication [Std]	
10	Execution	Standard coupling	
11	Design	Horizontal	
12	Operating speed	990 rpm	Stages 1
13	Suction nozzle	DN350 / PN16 / EN1092-2	Impeller Ø
14	Discharge nozzle	DN300 / PN16 / EN1092-2	
15	Max. casing pressure	kPa	Flow
16	Max. working pressure	kPa 302.8	
17	Impeller type	Radial impeller	
18	Head H(Q=0)	m 31	Head
19	Max. shaft power	kW 72.9	
20	Pump weight	kg 578	Shaft power kW
21	Total weight	kg 1,732.6	
			Efficiency %
			NPSH 3% m

Materials			
22		Pump	Shaft Seal
23	Volute Casing	Ductile Iron, EN-GJS-400-15, ASTM A536 40-60-18	Single mechanical seal, without shaft sleeve
24	Impeller	Cast Iron, EN 1561 - GJL-200, ASTM Class 30	eMG12 - Ø70mm BQ7EGG-WA
25	Casing Cover	Ductile Iron, EN-GJS-400-15, ASTM A536 40-60-18	Mechanical seal diameter 70 mm
26	Shaft	Stainless steel, 1.4057, AISI 431	1. Rotating ring Carbon graphite resin impregnated
27	Wear ring	Stainless steel, 1.4301, AISI 304	2. Stationary ring SiC, silicon carbide, sintered press. less
28	Impeller lock nut and washer	A4 (1.4401)	3. Secondary seal Ethylene propylene rubber (EPDM)
29	Impeller key	Stainless steel, 1.4571, AISI 316Ti	4. Springs CrNiMo - Steel
30	Fill and drain plugs	Galvanized carbon steel, EN 10277-3, AISI 1213 / 1215	5. Others EPDM - WRAS
31	Bearing bracket	Cast Iron, EN 1561 - GJL-250, ASTM Class 35	Gaskets of the pump Ethylene propylene rubber (EPDM)
32			
33			
34			
35			
36			
37			
38			
39			
40			
41			

Motor data				Coupling			
42	Manufacturer	Lowara		Manufacturer	Flender		
43	Specific design	IE4 3ph Surface Motor - Super Premium Efficiency		Series	Standard Coupling - N-EUPEX - Type B		
44	Type	3MGS 315 S B3 75 kW E4		Shaft diameter	Pump 60 mm	Motor 80 mm	
45	Rated power	75 kW	Rated current 135 A	Frame size	200		
46	Nominal speed	990 rpm	Rated voltage 400 V	Spacer length	mm 4		
47	Frame size	315 S	Service factor 1	Weight	kg 16.0		
48	Weight	kg 830.5	Degree of protection IP55	Coupling protection	GR.COUPLGUARD ES60-310-23 A4		3.5 kg

Base plate		Remarks
49	Name	FRAME 60NSCF80B-475-315
50	Weight	kg 304.6

NSCF 300-450/750/L65VDC4 E4

Performance curve

Company name
Contact
Phone number
e-mail address

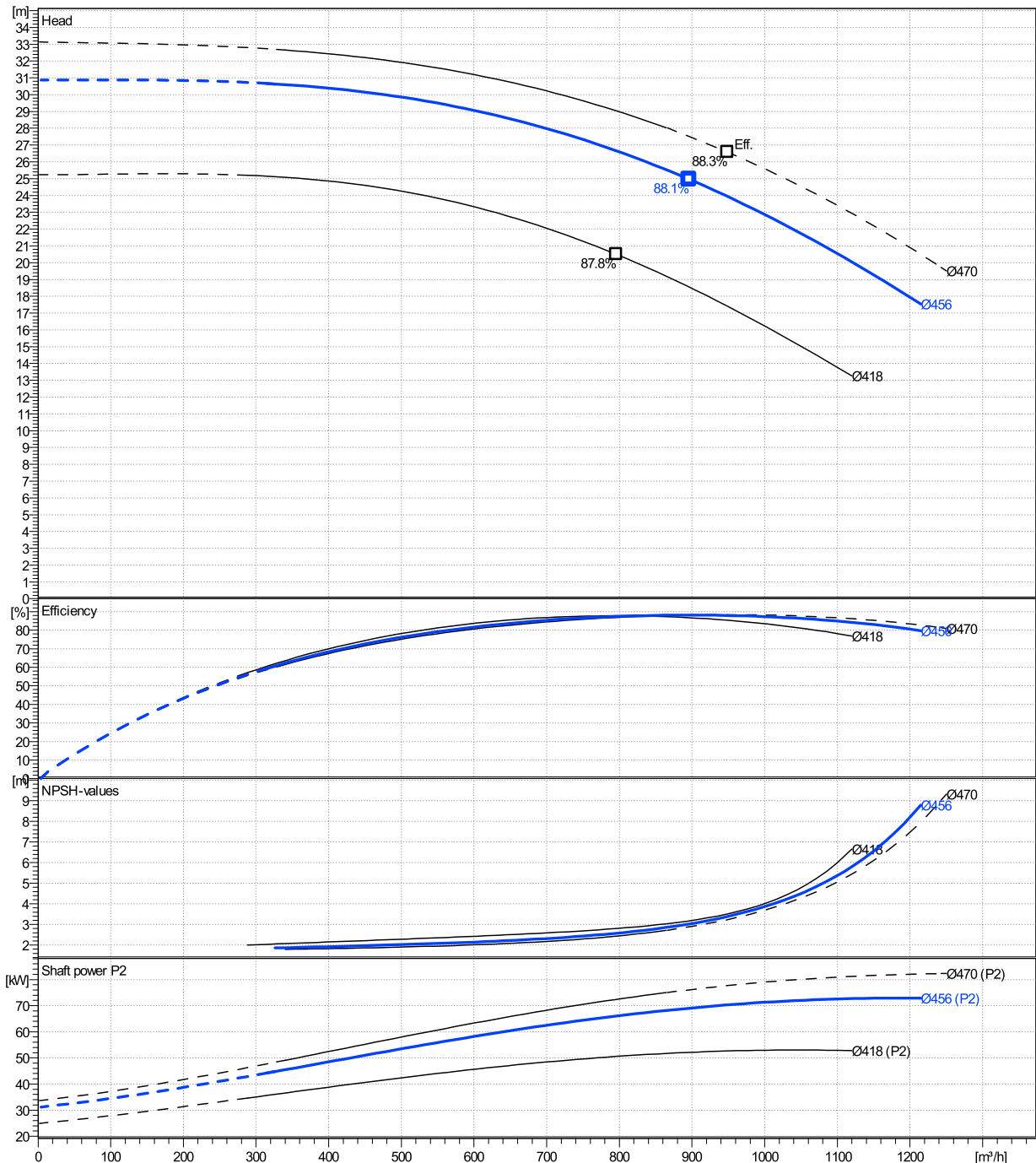
	Ø mm	Pump capacity			Pump head		Shaft power P2			Frequency	Hz	50
		Operating range Min. m³/h	Max. m³/h	η Max. m³/h	H(Q=0) m	η Max. m	P2(Q=0) kW	Max. kW	η Max. kW	Operating speed	rpm	990
actual	456	326	1220	896	30.9	25	72.9	69		Nominal flow	m³/h	0
Min.	0	/	/	796	25.2	20.5	/	50.6		Nominal head	m	0
Max.	470	/	/	949	33.1	26.6	/	77.7		Inlet pressure	kPa	0
										Static head	m	0

Power datas referred to:

hydr. Performance acceptance acc. To EN ISO 9906 Class Grade 2B

Water, pure [100%] ; 4°C; 1000kg/m³; 1.57mm²/s

MEI: N.A - according to Ecodesign Directive 2009/125/EC and Regulation (EU) No.547/2012



NSCF 300-450/750/L65VDC4 E4

Dimensions

Company name
Contact
Phone number
e-mail address

Frame mounted
Standard coupling
3MGS 315 S B3 75 kW E4

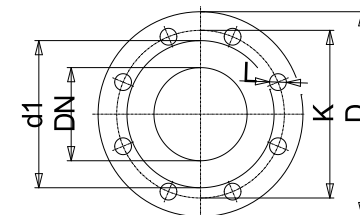
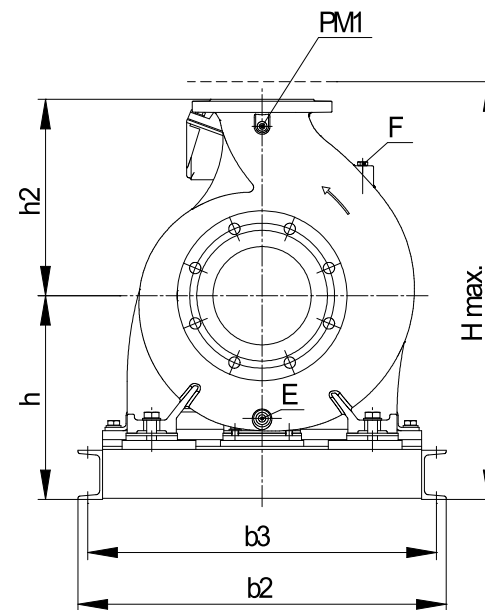
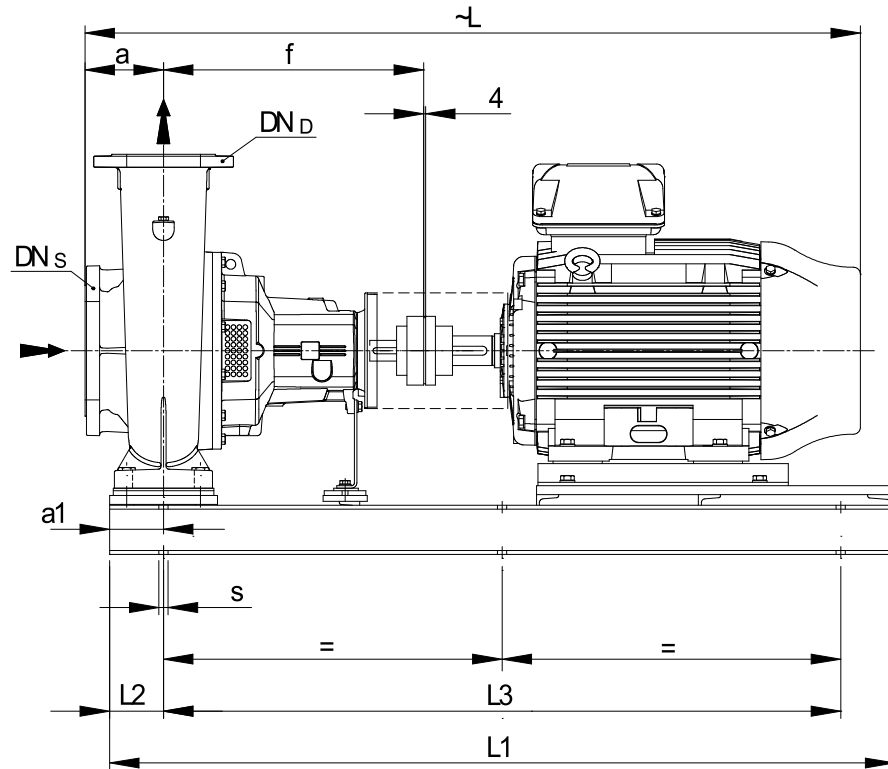
Electrical and dimensional data refer to IE4 motor

Dimensions [mm]

a	250
a1	200
b2	960
b3	910
CTO	0
DNd	300
DNs	350
E	1/2"
F	-
f	800
Guard	314
h	665
h2	630
Hmax	1295
L	2209.5
L1	2100
L2	200
L3	1700
PM1	1/2"
s	6xØ26
Trim	0
Volumen	2.7469

Weight	
Total weight	1732.6 kg

Connections			
Suction nozzle		Discharge nozzle	
DN350		DN300	
PN16		PN16	
EN1092-2		EN1092-2	
C	36	C	32
D	535	D	485
d1	429	d1	370
K	470	K	410
L	28	L	28
z	16	z	12



Value C, D may vary from Standard

Dimensions and weight without obligation

Project	Xylect-20101285	Created by		Last update	12/15/2024
Block	NSCF 300-450/3150/L45VDC4	Created on	12/15/2024		