

NSCF 50-200/150/P25VCS4

Technical data

Company name
Contact
Phone number
e-mail address

Operating data						
1	Pumpe type	Single head pump		Fluid	Water, pure	
2	No. of pumps	1		Operating temperature t A	°C	4
3	Nominal flow	m ³ /h	0	Max / Min Operating Temperature mech. Seal	°C	120 / -25
4	Nominal head	m	0	pH-value at t A		7
5	Static head	m	0	Density at t A	kg/m ³	1000
6	Inlet pressure	kPa	0	Kin. viscosity at t A	mm ² /s	1.569
7	Environmental temperature	°C	20	Vapor pressure at t A	kPa	100
8	Available system NPSH	m	0	Altitude		0

Pump data										
9	Lubrication	Standard, Grease lubrication [Std]								
10	Execution	[F] = 2 poles motor unit with standard cuopling								
11	Design	Horizontal		Impeller Ø	Max.	mm	209			
12	Operating speed	2900 rpm	Stages		1	designed	mm	197		
13	Suction nozzle	DN 65	/		PN 16	/	EN1092-2	Min.	mm	168
14	Discharge nozzle	DN 50	/	PN 16	/	EN1092-2	Flow	Nominal	m ³ /h	
15	Max. casing pressure	kPa						Max-	m ³ /h	94.8
16	Max. working pressure	kPa	524.7				Min-	m ³ /h	23.8	
17	Impeller type	Radial impeller		Head	Nominal	m				
18	Head H(Q=0)	m	53		at Qmax	m	37.1			
19	Max. shaft power	kW	14.9		Shaft power	kW				
20	Pump weight	kg	42		Efficiency	%				
21	Total weight	kg	179.3		NPSH 3%	m				

Materials					
22		Pump		Shaft Seal	
23	Volute Casing	Cast Iron		Single mechanical seal, without shaft sleeve	
24	Casing Cover	Cast Iron		eMG12 - Ø28mm	BQ7EGG-WA
25	Impeller	Fabricated Stainless Steel		Mechanical seal diameter	28 mm
26	Shaft	Stainless steel		1. Rotating ring	Carbon graphite resin impregnated
27	Wear ring	Stainless steel		2. Stationary ring	SiC, silicon carbide, sintered press. less
28	Impeller lock nut and washer	Stainless steel		3. Secondary seal	Ethylene propylene rubber (EPDM)
29	Impeller key	Stainless steel		4. Springs	CrNiMo - Steel
30	Fill and drain plugs	Stainless steel		5. Others	EPDM - WRAS
31				Gaskets of the pump	Ethylene propylene rubber (EPDM)
32					
33					
34					
35					
36					
37					
38					
39					
40					
41					

Motor data				Electrical and dimensional data refer to IE3 motor				Coupling			
42	Manufacturer	Lowara				Manufacturer	Flender				
43	Specific design	IE3 3ph Surface Motor - Premium Efficiency				Series	Standard Coupling - N-EUPEX - Type B				
44	Type	PLM 160 B3 15 kW				Shaft diameter	Pump	24 mm	Motor	42 mm	
45	Rated power	15 kW	Rated current	26.6 A		Frame size	95				
46	Nominal speed	2940 rpm	Rated voltage	400 V		Spacer length	mm	3			
47	Frame size	160	Service factor	1		Weight	kg 2.2				
48	Weight	kg	99.5	Degree of protection	IP55	Coupling protection	COUPLGUARD 160x162PNTD			0.34 kg	

Base plate			Remarks		
49	Name	BASE 5A 1120X490 BLU			
50	Weight	kg	35.3		

NSCF 50-200/150/P25VCS4

Performance curve

Company name
Contact
Phone number
e-mail address

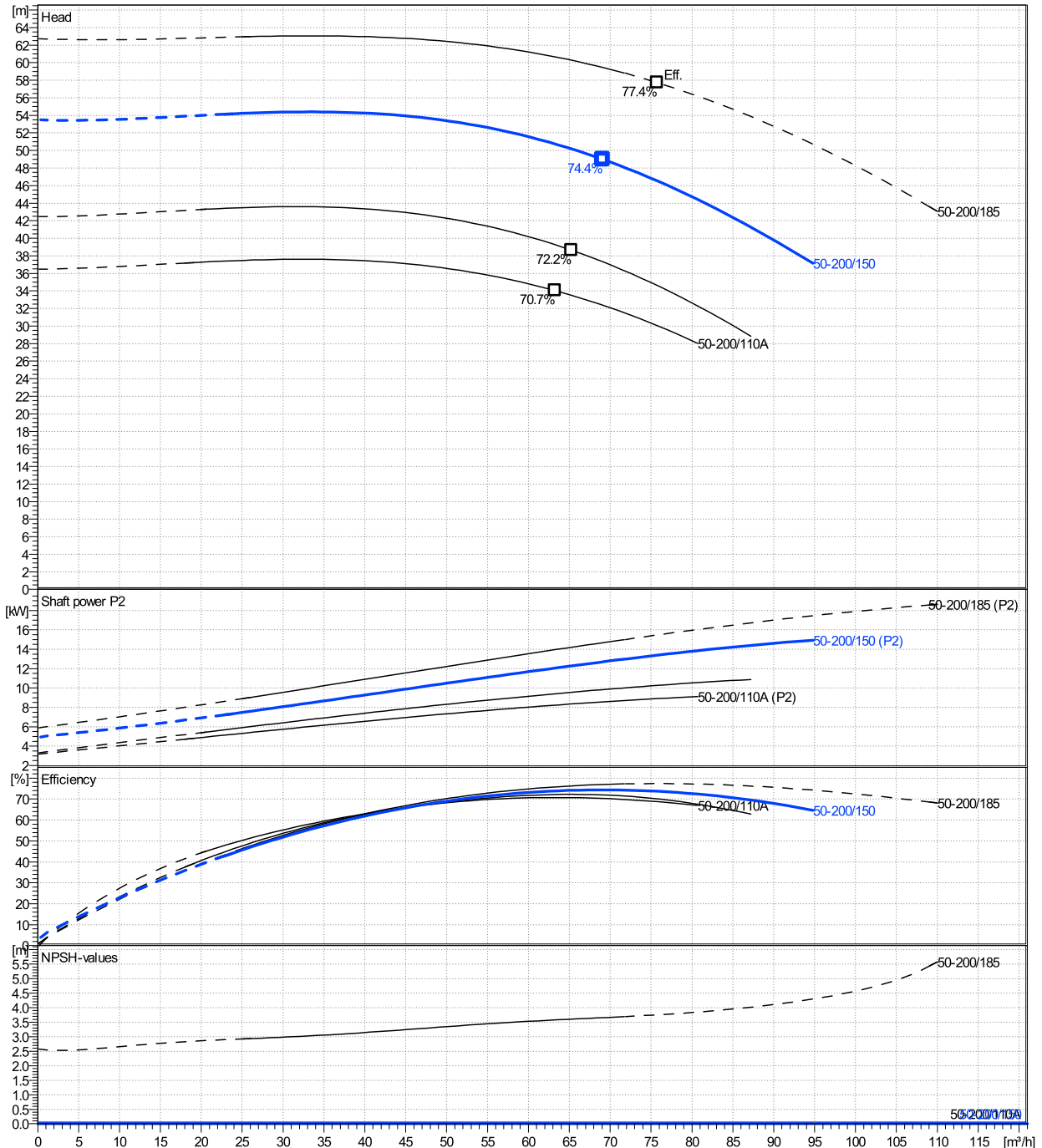
	Ø mm	Pump capacity			Pump head		Shaft power P2			Frequency	Hz	50
		Operating range Min. m³/h	Max. m³/h	η Max. m³/h	H(Q=0) m	η Max. m	P2(Q=0) kW	Max. kW	η Max. kW	Operating speed	rpm	2900
actual	197	23.8	94.8	69.1	53.5	49	14.9	12.7	Nominal flow	m³/h	0	
Min.	0	/	/	63.2	36.5	34	/	8.23	Nominal head	m	0	
Max.	209	/	/	75.8	62.7	57.7	/	15.5	Inlet pressure	kPa	0	
									Static head	m	0	

Power datas referred to:

hydr. Performance acceptance acc. To EN ISO 9906 Class Grade 3B

Water, pure [100%] ; 4°C; 1000kg/m³; 1.57mm²/s

MEI: >=0,4



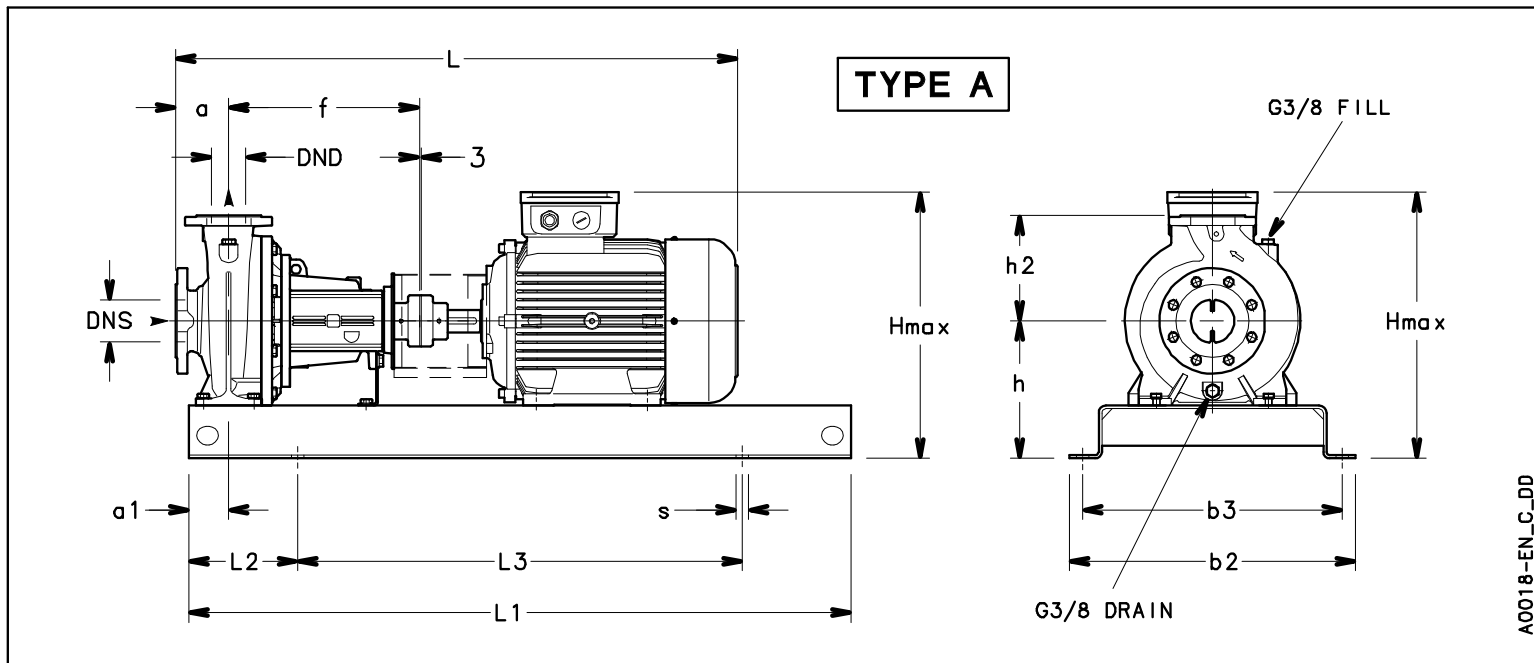
NSCF 50-200/150/P25VCS4

Dimensions

Company name
Contact
Phone number
e-mail address

Frame mounted
[F] = 2 poles motor unit with standard coupling
PLM 160 B3 15 kW

Electrical and dimensional data refer to IE3 motor



Dimensions [mm]

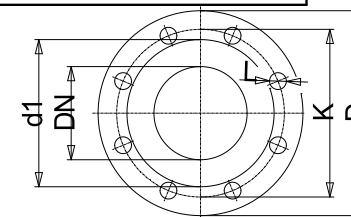
a	100
a1	75
AD	240
b2	490
b3	440
DND	50
DNS	65
f	360
Guard	163
h	260
h2	200
Hmax	500
L	1067
L1	1120
L2	190
L3	740
s	4xØ24
Type	A
Volumen	0.26142
x	3

Weight

Total weight	179.34 kg
--------------	-----------

Connections

Suction nozzle		Discharge nozzle	
DN 65		DN 50	
PN 16		PN 16	
EN1092-2		EN1092-2	
C	20	C	20
D	185	D	165
df	118	df	99
DN	65	DN	50
K	145	K	125
L	4 x 19	L	4 x 19



Dimensions and weight without obligation

Project	Xylect-20101351
Block	NSCF 50-200/185/P25VCS4

Created by	
Created on	12/15/2024

Last update	12/15/2024
-------------	------------