

# NSCF 50-200/22/P45RCS4

## Technical data

Company name  
Contact  
Phone number  
e-mail address

Operating data			
1	Pumpe type	Single head pump	Fluid Water, pure
2	No. of pumps	1	Operating temperature t A °C 4
3	Nominal flow	m <sup>3</sup> /h 0	Max / Min Operating Temperature mech. Seal °C 120 / -25
4	Nominal head	m 0	pH-value at t A 7
5	Static head	m 0	Density at t A kg/m <sup>3</sup> 1000
6	Inlet pressure	kPa 0	Kin. viscosity at t A mm <sup>2</sup> /s 1.569
7	Environmental temperature	°C 20	Vapor pressure at t A kPa 100
8	Available system NPSH	m 0	Altitude 0

Pump data			
9	Lubrication	Standard, Grease lubrication [Std]	
10	Execution	[F] = 4 poles motor unit with standard cuopling	
11	Design	Horizontal	
12	Operating speed	1450 rpm	Stages 1
13	Suction nozzle	DN 65 / PN 16 / EN1092-2	Impeller Ø
14	Discharge nozzle	DN 50 / PN 16 / EN1092-2	
15	Max. casing pressure	kPa	Flow
16	Max. working pressure	kPa 147.9	
17	Impeller type	Radial impeller	
18	Head H(Q=0)	m 15	Head
19	Max. shaft power	kW 2.2	
20	Pump weight	kg 42	Shaft power kW
21	Total weight	kg 106.3	Efficiency %
			NPSH 3% m

Materials			
22		<b>Pump</b>	<b>Shaft Seal</b>
23	Volute Casing	Cast Iron	Single mechanical seal, without shaft sleeve
24	Casing Cover	Cast Iron	eMG12 - Ø28mm BQ7EGG-WA
25	Impeller	Fabricated Stainless Steel	Mechanical seal diameter 28 mm
26	Shaft	Stainless steel	1. Rotating ring Carbon graphite resin impregnated
27	Wear ring	Stainless steel	2. Stationary ring SiC, silicon carbide, sintered press. less
28	Impeller lock nut and washer	Stainless steel	3. Secondary seal Ethylene propylene rubber (EPDM)
29	Impeller key	Stainless steel	4. Springs CrNiMo - Steel
30	Fill and drain plugs	Stainless steel	5. Others EPDM - WRAS
31			Gaskets of the pump Ethylene propylene rubber (EPDM)
32			
33			
34			
35			
36			
37			
38			
39			
40			
41			

Motor data				Coupling			
42	Manufacturer	Lowara		Manufacturer	Flender		
43	Specific design	IE3 3ph Surface Motor - Premium Efficiency		Series	Standard Coupling - N-EUPEX - Type B		
44	Type	PLM 100 B3 2,2 kW		Shaft diameter	Pump 24 mm	Motor 28 mm	
45	Rated power	2.2 kW	Rated current 4.64 A	Frame size	68		
46	Nominal speed	1445 rpm	Rated voltage 400 V	Spacer length	mm 3		
47	Frame size	100	Service factor 1	Weight	kg 0.5		
48	Weight	kg 39.8	Degree of protection IP55	Coupling protection	COUPLGUARD 160x112PNTD		0.24 kg

Base plate		Remarks	
49	Name	BASE 3A 900X390 BLU	
50	Weight	kg 23.7	

# NSCF 50-200/22/P45RCS4

## Performance curve

Company name  
Contact  
Phone number  
e-mail address

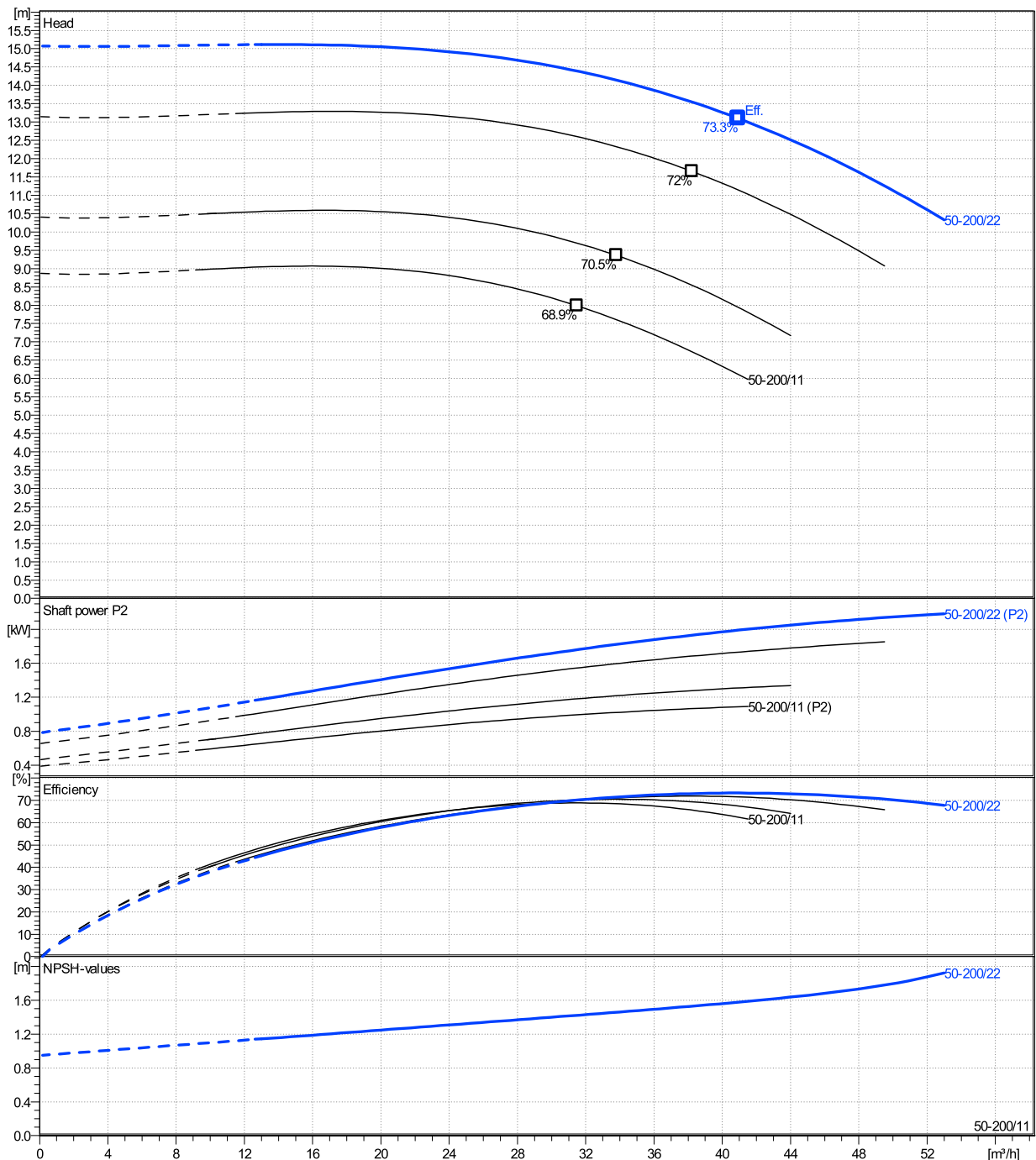
	Ø mm	Pump capacity			Pump head		Shaft power P2			Frequency		Hz	50
		Operating range Min. m³/h	Max. m³/h	η Max. m³/h	H(Q=0) m	η Max. m	P2(Q=0) kW	Max. kW	η Max. kW	Operating speed rpm	1450		
actual	209	13	53	40.9	15.1	13.1	2.19	1.99	0.993	Nominal flow	m³/h	0	
Min.	0	/	/	31.5	8.87	7.99	/	/	0.993	Nominal head	m	0	
Max.	209	/	/	40.9	15.1	13.1	/	/	1.99	Inlet pressure	kPa	0	
										Static head	m	0	

**Power datas referred to:**

hydr. Performance acceptance acc. To EN ISO 9906 Class Grade 3B

Water, pure [100%] ; 4°C; 1000kg/m³; 1.57mm²/s

MEI: >=0,4



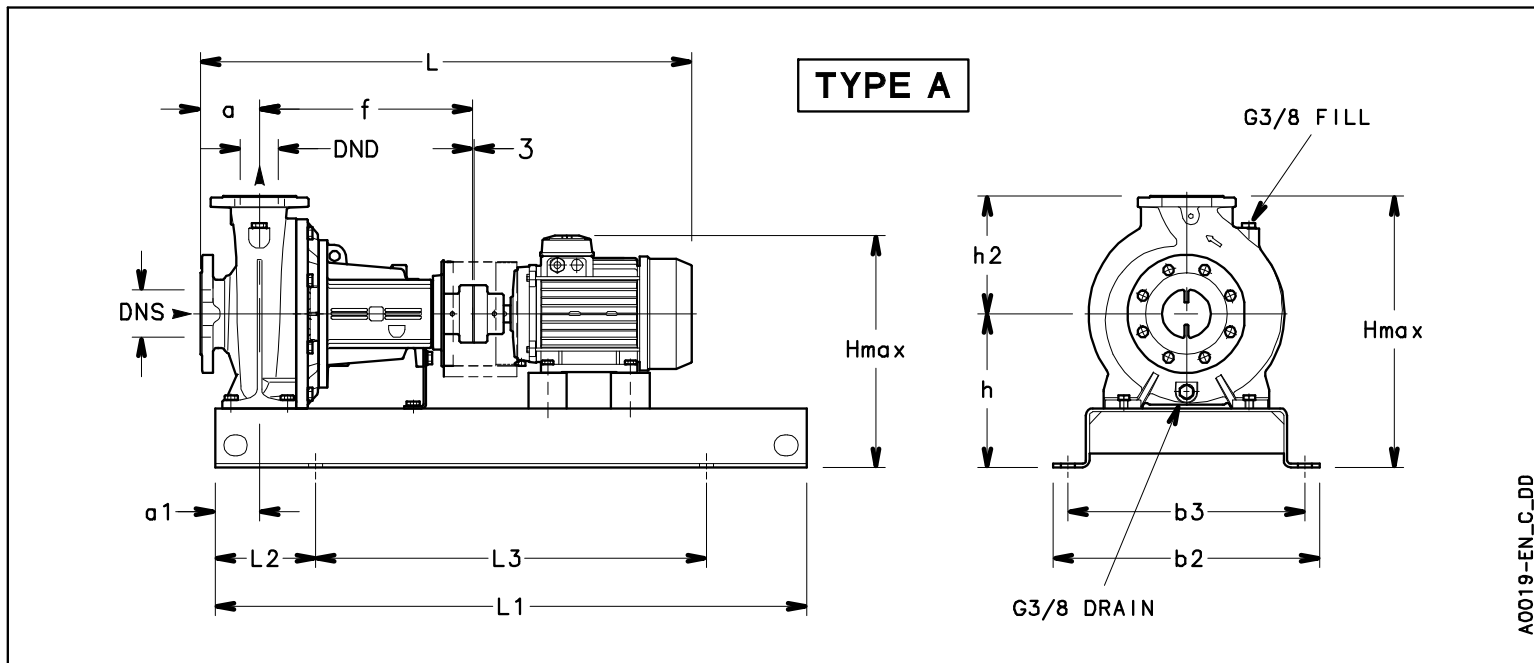
**NSCF 50-200/22/P45RCS4**

**Dimensions**

Company name  
Contact  
Phone number  
e-mail address

Frame mounted  
[F] = 4 poles motor unit with standard coupling  
PLM 100 B3 2,2 kW

Electrical and dimensional data refer to IE3 motor



**Dimensions** [ mm ]

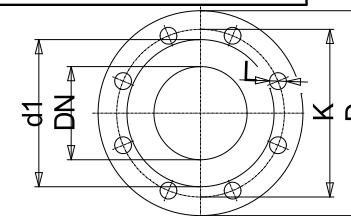
a	100
a1	60
AD	164
b2	390
b3	350
DND	50
DNS	65
f	360
Guard	113
h	260
h2	200
Hmax	460
L	888
L1	900
L2	150
L3	600
s	4xØ19
Type	A
Volumen	0.15931
x	3

**Weight**

Total weight	106.28 kg
--------------	-----------

**Connections**

Suction nozzle		Discharge nozzle	
DN 65		DN 50	
PN 16		PN 16	
EN1092-2		EN1092-2	
C	20	C	20
D	185	D	165
df	118	df	99
DN	65	DN	50
K	145	K	125
L	4 x 19	L	4 x 19



Value C, D may vary from Standard

**Dimensions and weight without obligation**

Project	Xylect-20101351	Created by		Last update	12/15/2024
Block	NSCF 50-200/185/P25VCS4	Created on	12/15/2024		